

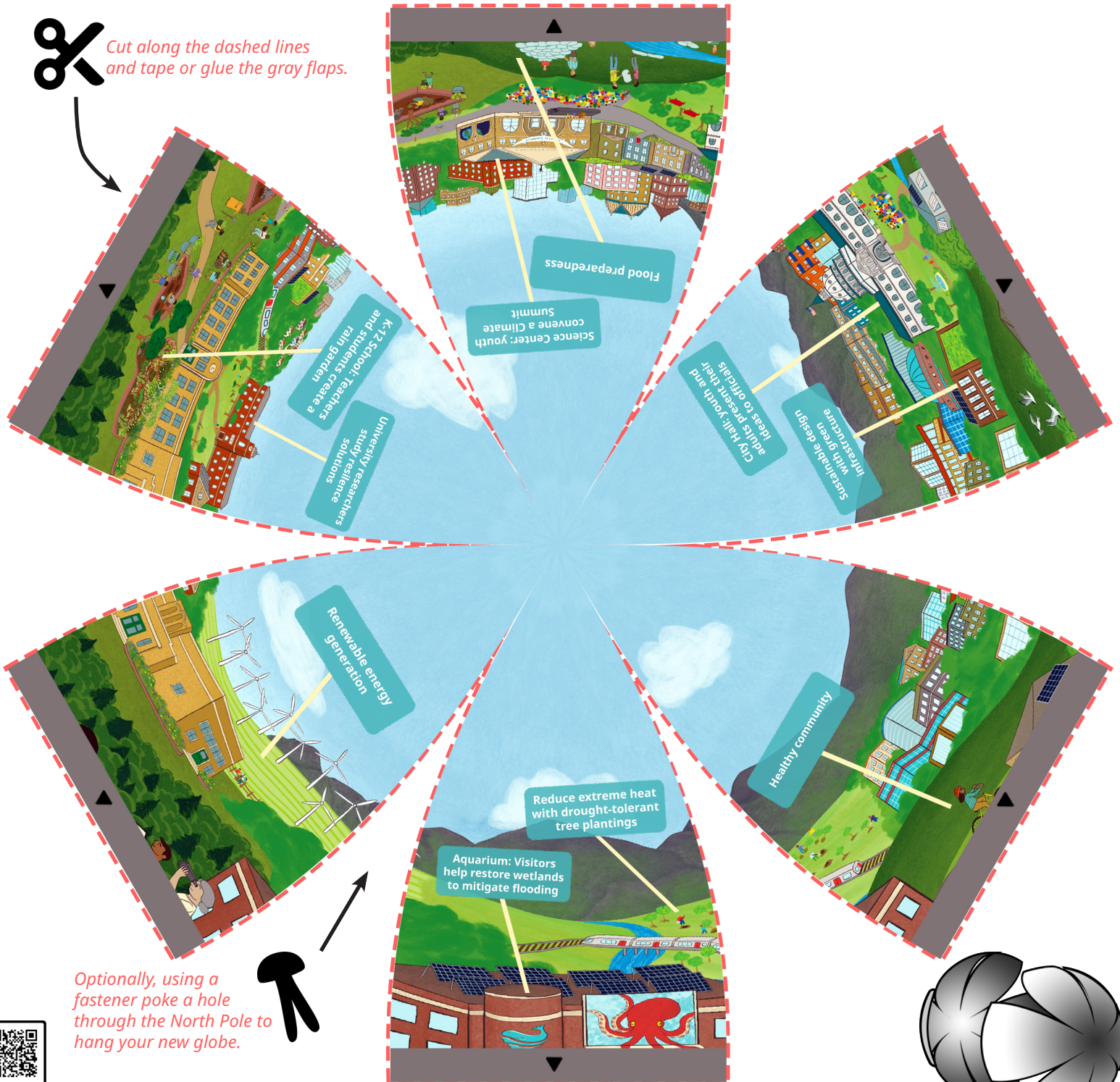


NOAA's vision of a resilient community

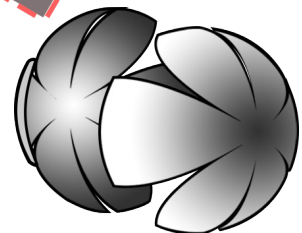
This illustration from NOAA's Environmental Literacy Program depicts several key aspects of the NOAA Community Resilience Education Theory of Change. This community represents a vision of the future where children, youth, and adults are learning together and are directly engaged in activities that improve the resilience of their community. Institutions, including museums, aquariums, schools, universities, companies, and centers of government, are also working to increase community resilience.

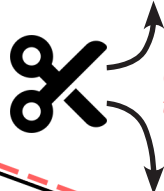
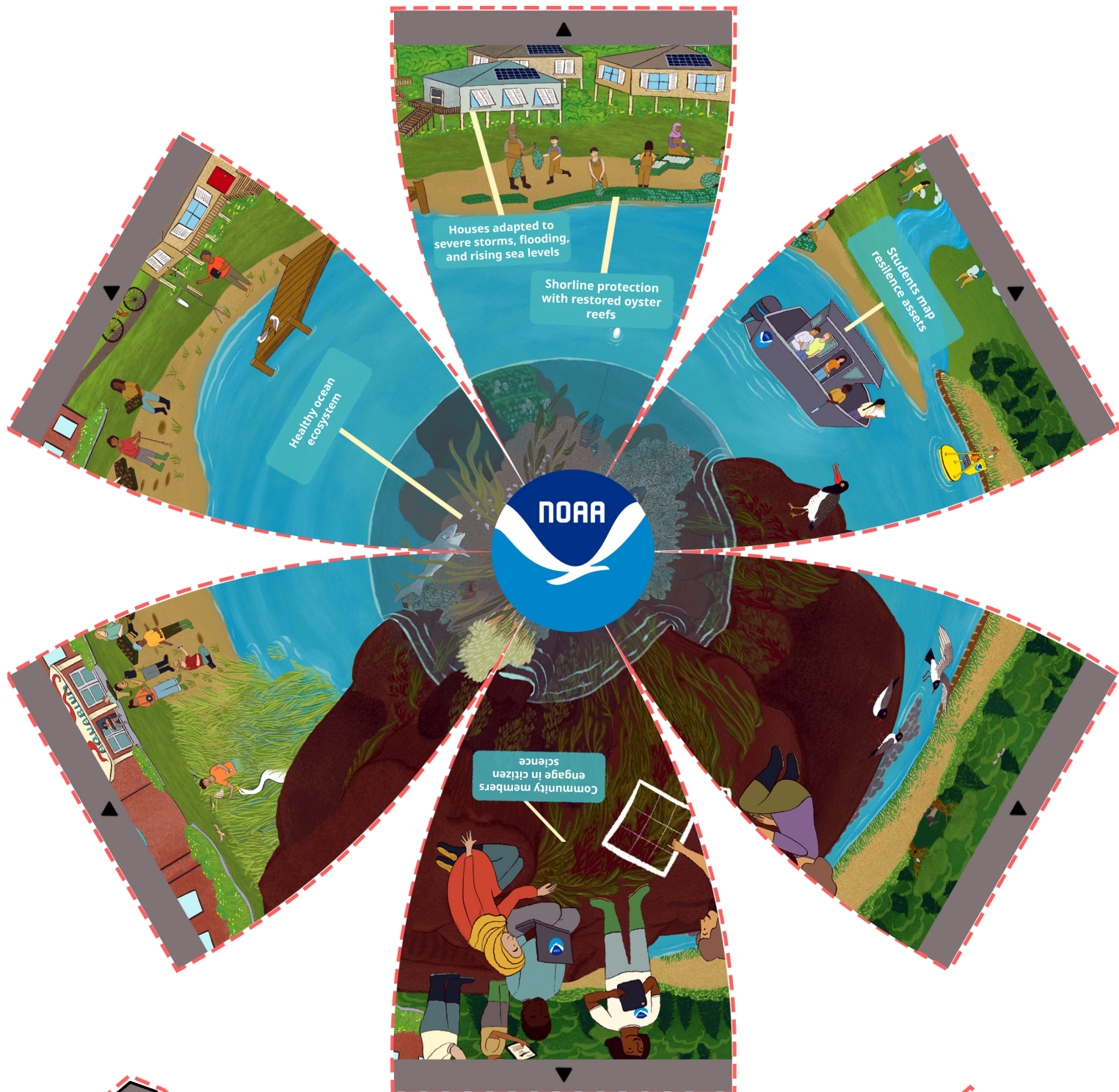


Cut along the dashed lines and tape or glue the gray flaps.



Optionally, using a fastener poke a hole through the North Pole to hang your new globe.





Cut along the dashed lines and tape or glue gray flaps.

This illustration from NOAA's Environmental Literacy Program depicts several key aspects of the NOAA Community Resilience Education Theory of Change.

This community represents a vision of the future where children, youth, and adults are directly together and learning together in activities that improve the resilience of their community.

NOAA's vision of a resilient community

Institutions, including museums, universities, schools, companies, and centers of government, are also working to increase community resilience.

This is a stand for the globe

