

DETROIT ZOOLOGICAL SOCIETY®

Impacts of climate change on polar bears/grizzly bears /wolves

Paul Buzzard, PhD
Field Conservation Officer



DETROIT ZOO ♦ BELLE ISLE NATURE CENTER

Polar Bears/Grizzly Bears at Kaktovik, AK



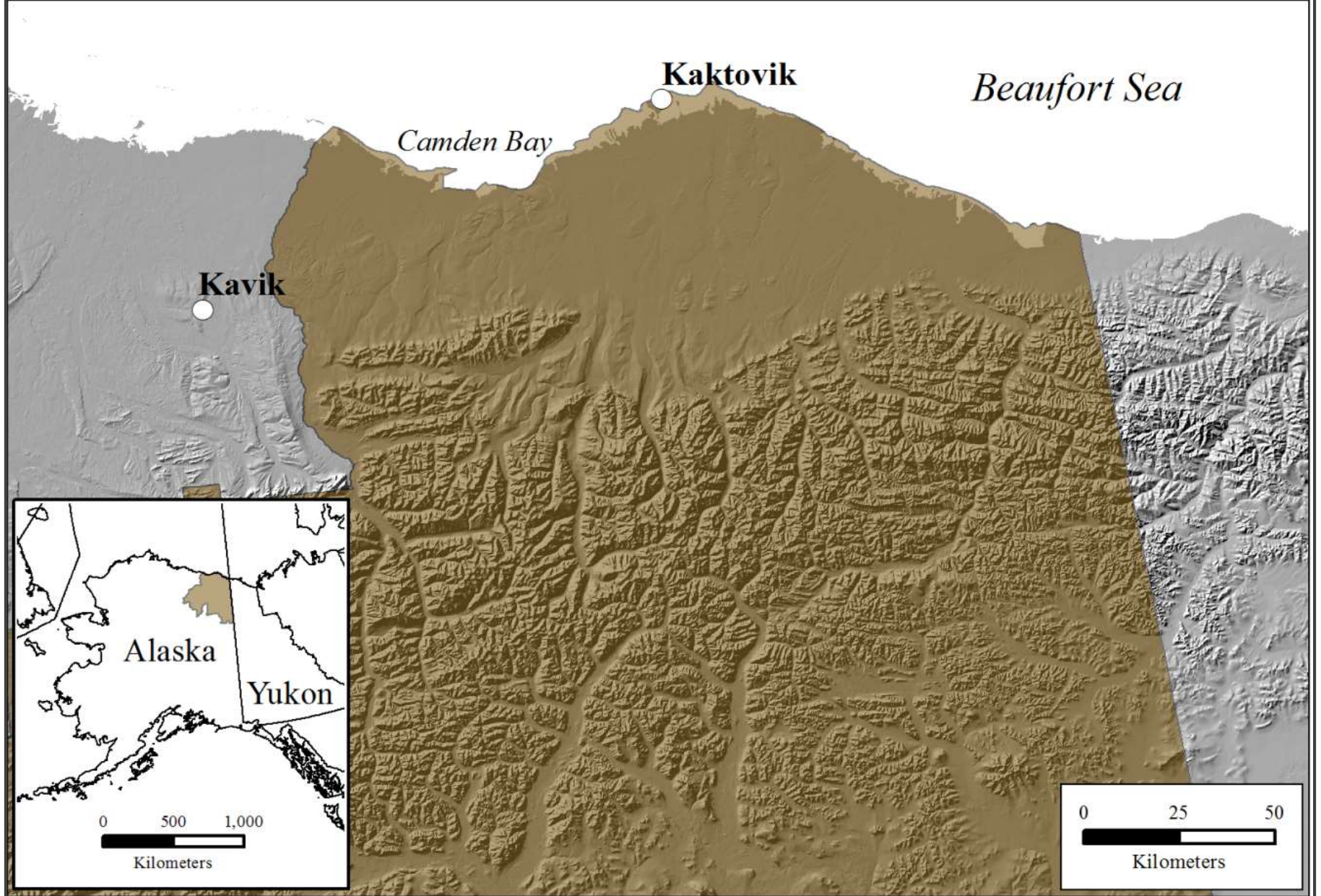


Figure 1. Proposed area to study the degree of sympatry and potential for competition between polar and grizzly bears within the Arctic National Wildlife Refuge (brown area), North Slope of Alaska, 2015-18.



Bone pile video



Bone pile video

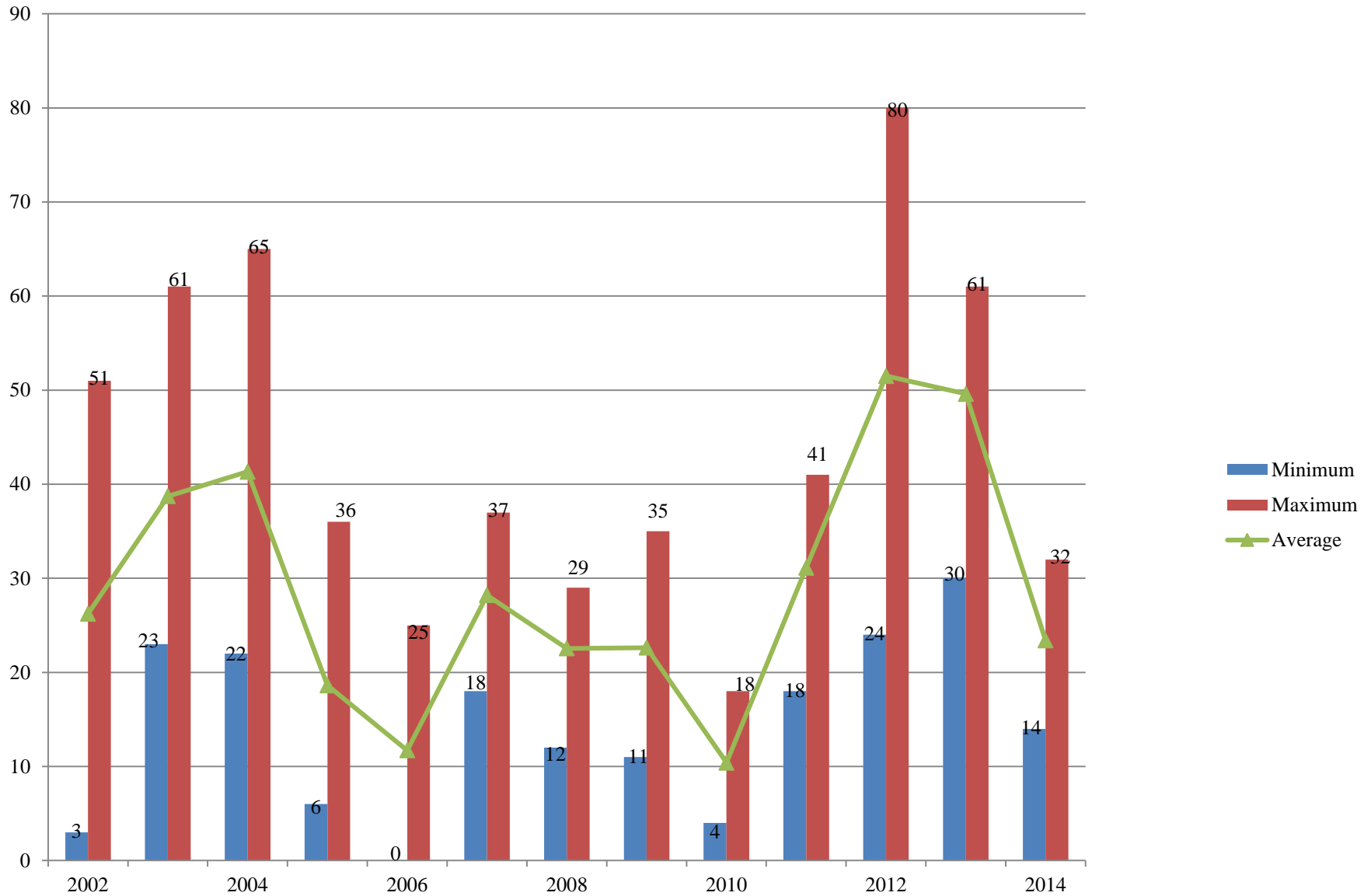




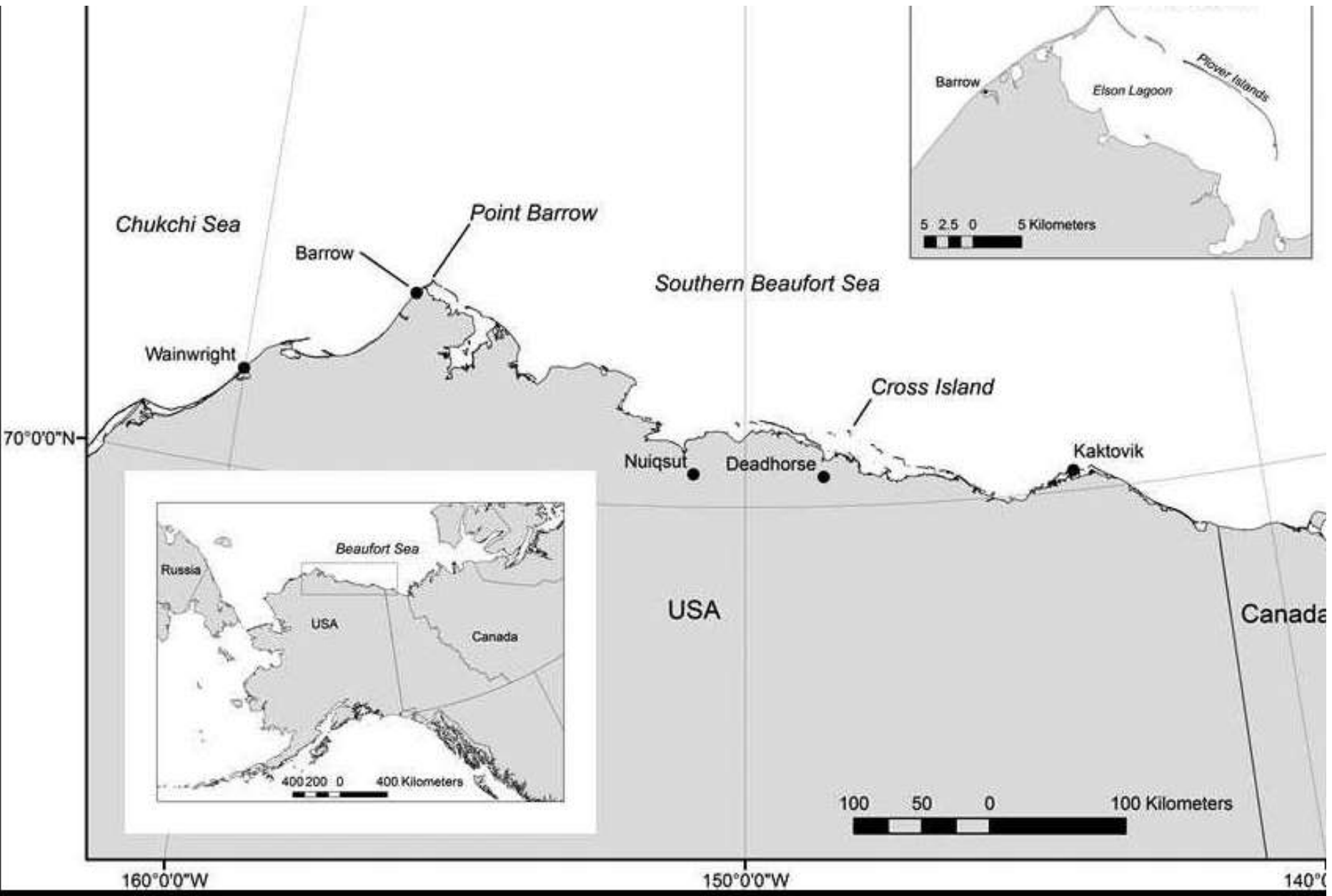
Kaktovik, AK and Barter Island



Polar Bear Numbers at Barter Island, September 7-26, 2002-2014







Other prey switching by Polar Bears



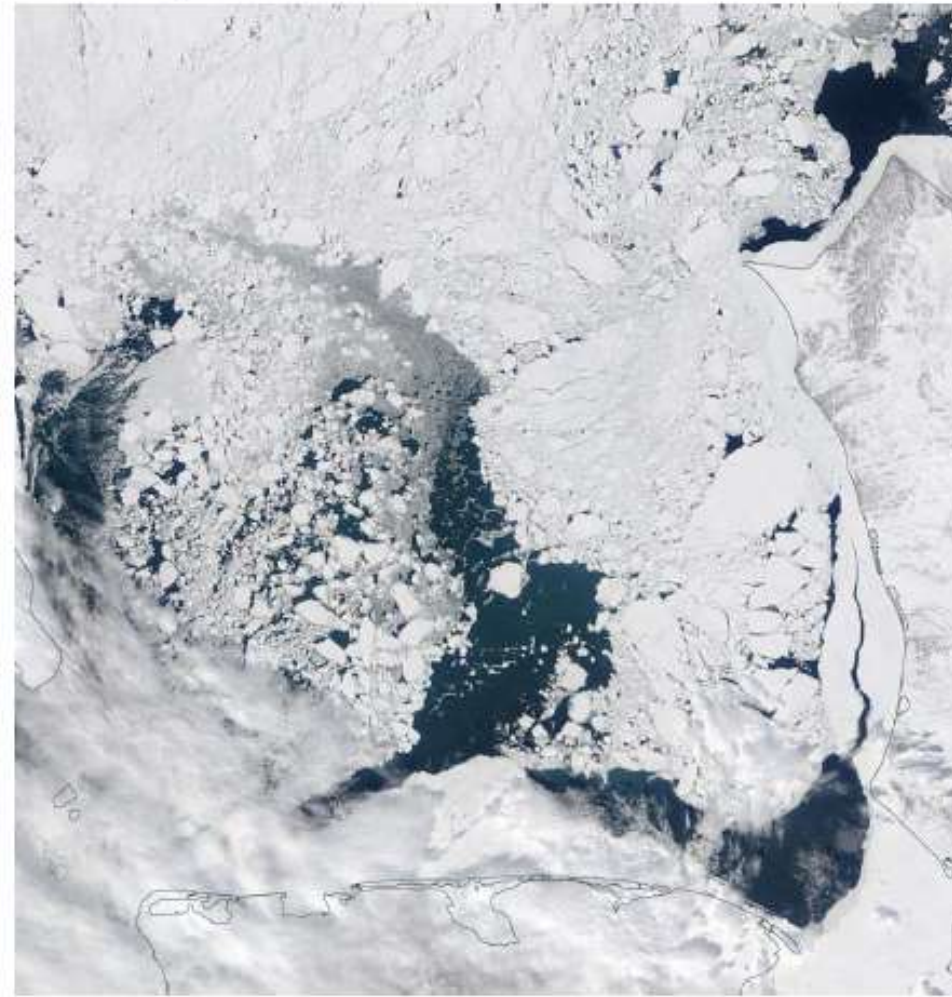
Musk ox, walrus, geese eggs (88 eggs equals a seal), etc.



04-16-2016

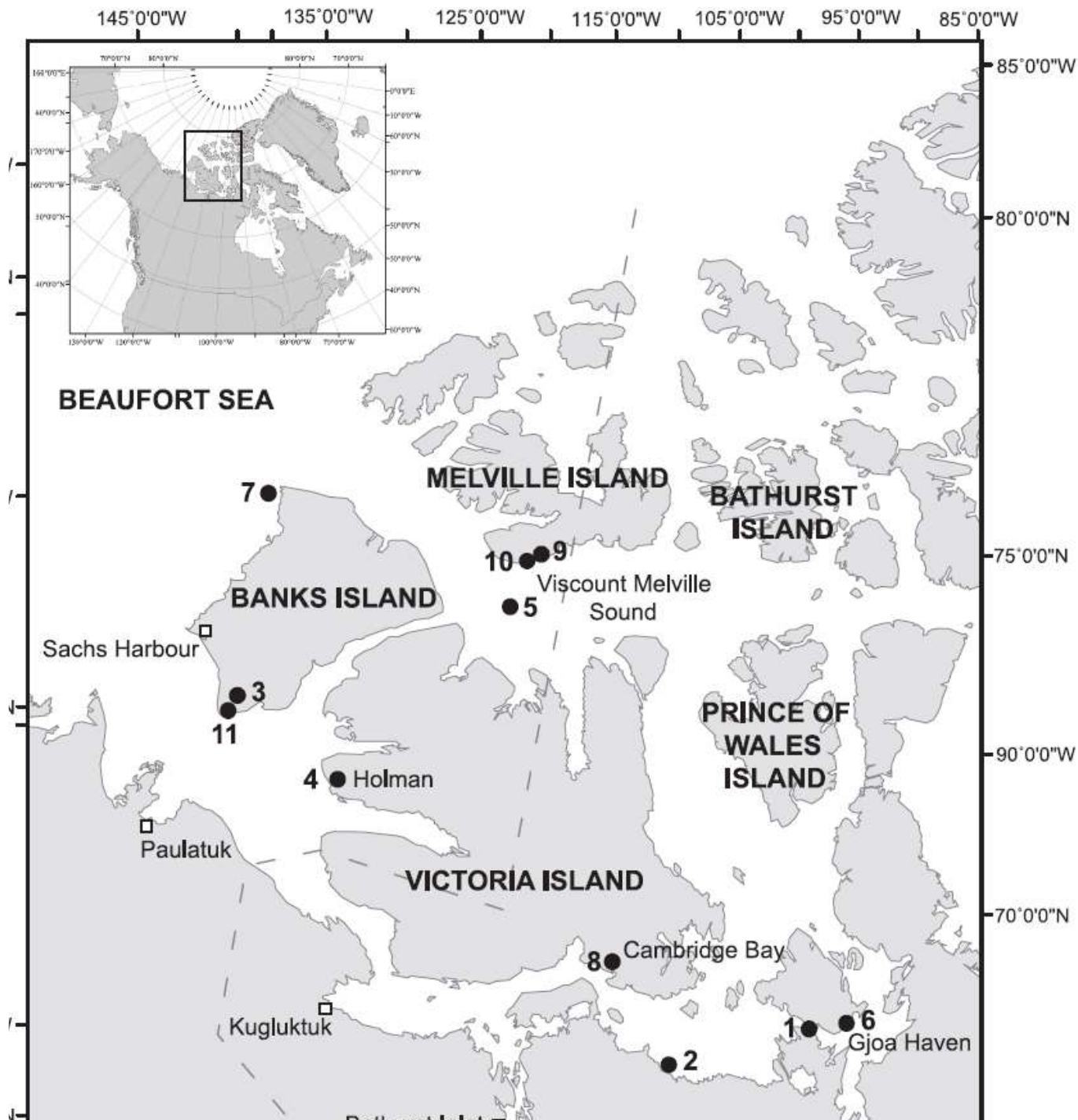


04-16-2017



Grizzly bear at Kaktovik bone pile





Pizzlies / Grolar Hybrid Bears



3 confirmed cases, many suspected; normally male grizzly and female polar; in one case father grizzly mother was grizzly-polar hybrid

Wolves at Isle Royale



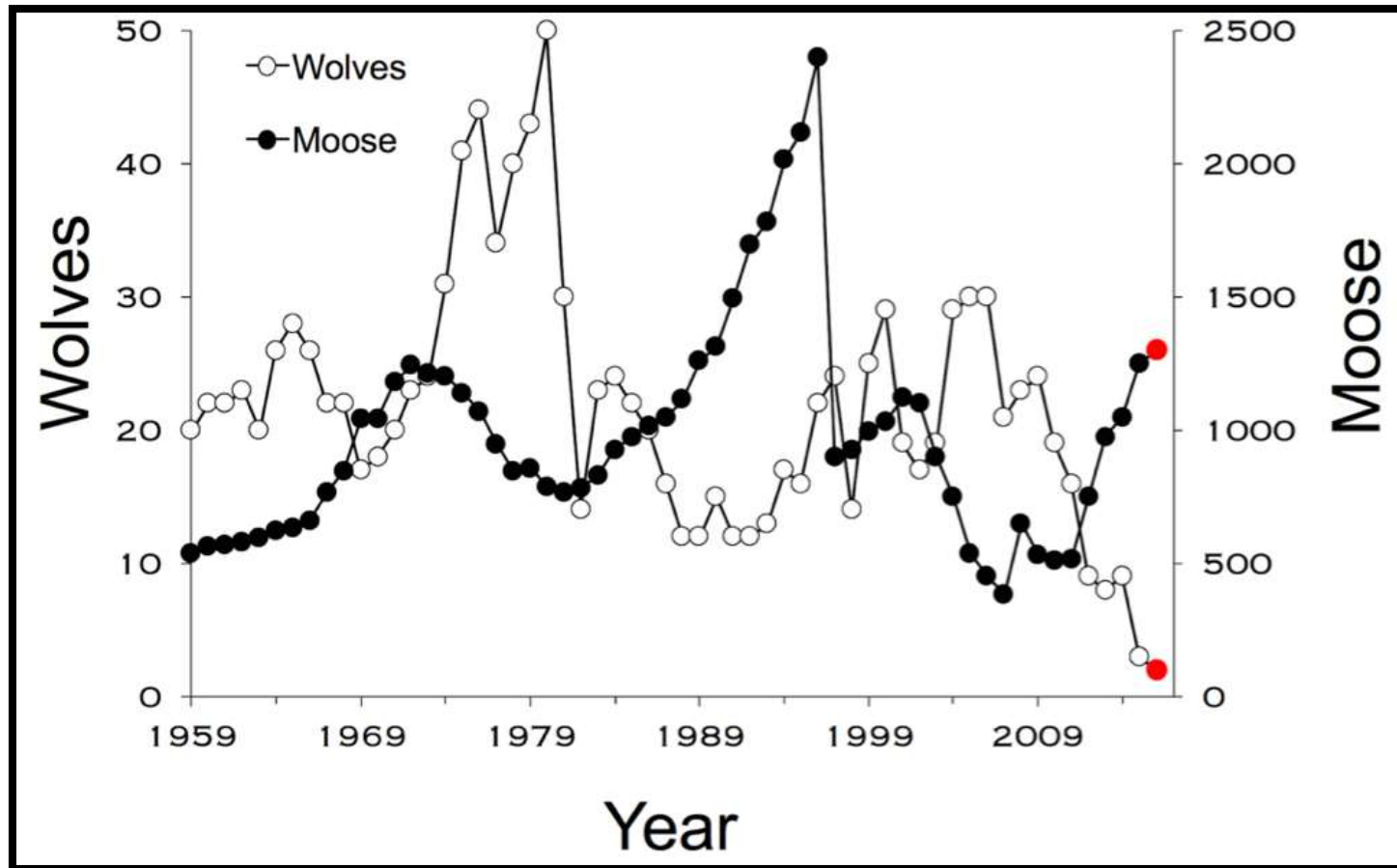
2015: Opening of the Cotton Family Wolf habitat, support for the wolf-moose project





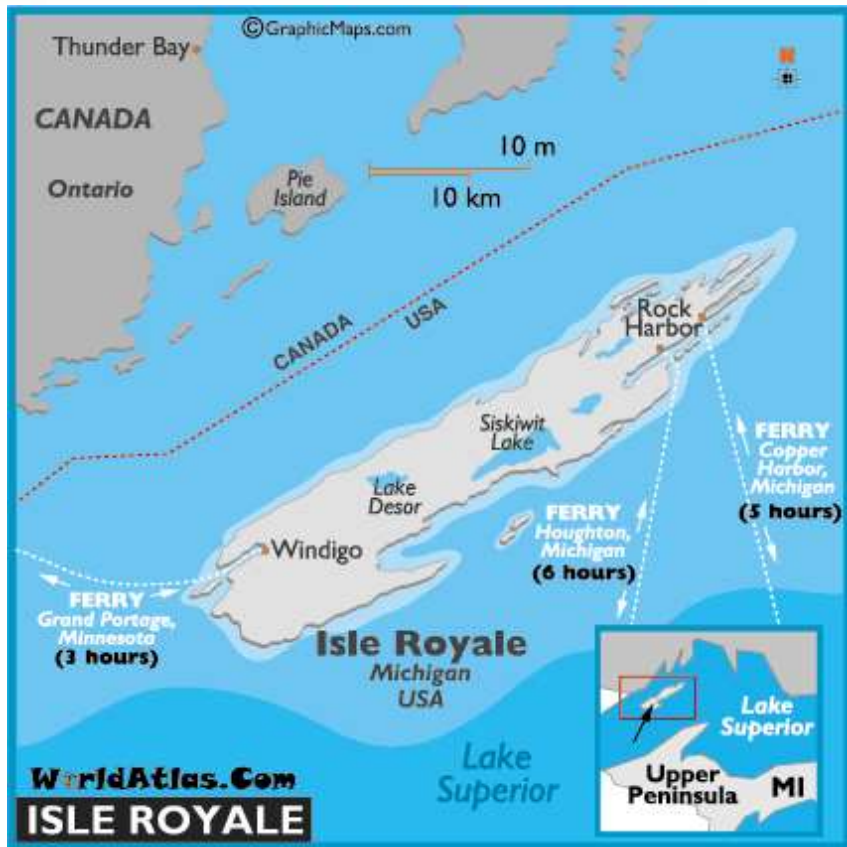


Wolves and Moose at Isle Royale



Wolf Reintroductions: 1952, 2018?

Wolves and Moose at Isle Royale



DZS staff at Isle Royale May 2016/2017 to meet with Profs. Peterson and Vucetich; look for wolf sign; and monitor moose.



A man wearing a white long-sleeved shirt, khaki pants, and a dark baseball cap is crouching on the forest floor. He is looking down at the ground, possibly examining a sample or a specific feature of the terrain.

A man in a grey t-shirt and khaki pants stands in the background, holding a long, thin branch or tool. He appears to be observing the area or preparing for a task.

A person wearing a light-colored jacket, khaki pants, and a hat stands in the background. They are holding a device, possibly a GPS or a data logger, and seem to be recording information.

A person in a white shirt and dark pants is kneeling on the ground, focused on a task. They appear to be working with a sample or equipment on the forest floor.







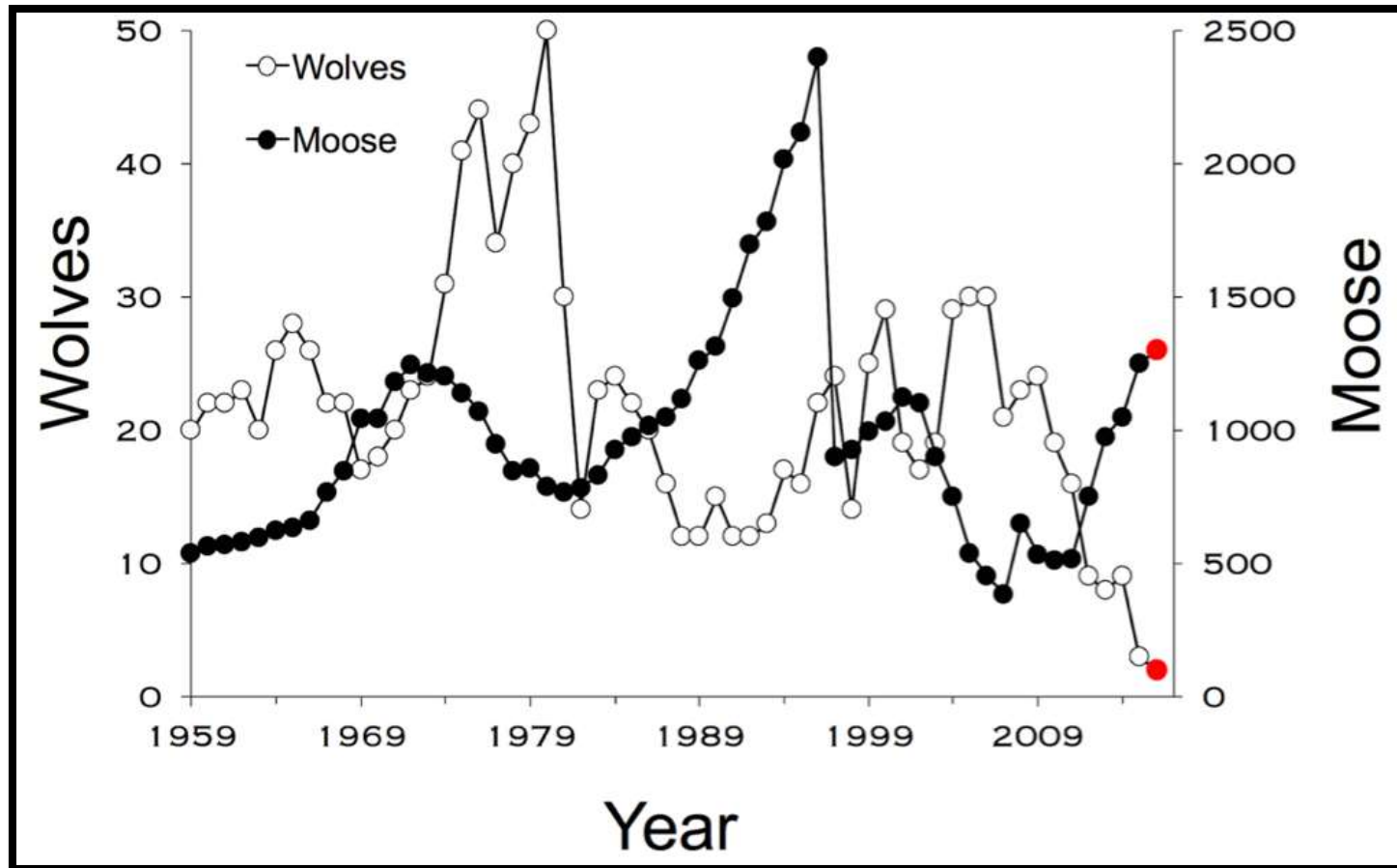


5
6

10

11

Wolves and Moose at Isle Royale



Wolf Reintroductions: National Park Service to decide late 2017

A scenic landscape photograph showing a dense forest of green trees in the foreground. In the middle ground, a small island with a white lighthouse is visible in a blue body of water. The background features a hazy, blue sky and distant landmasses.

Thank you!

