



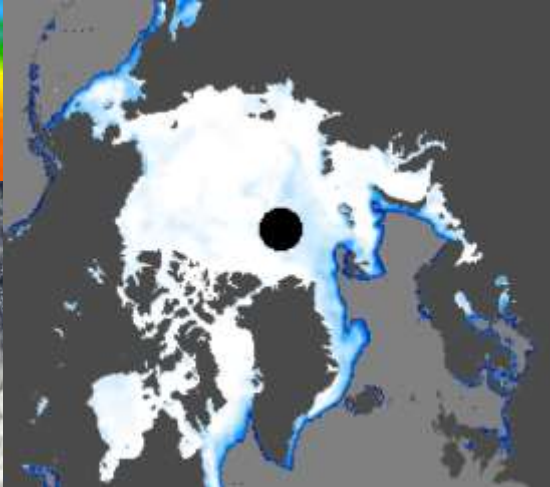
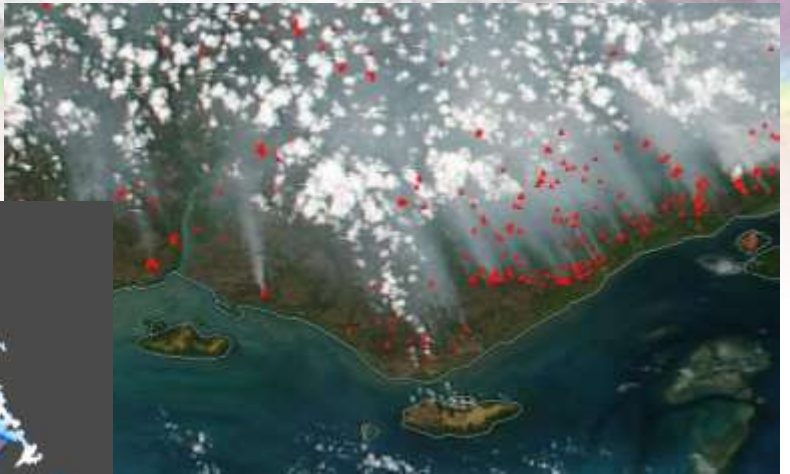
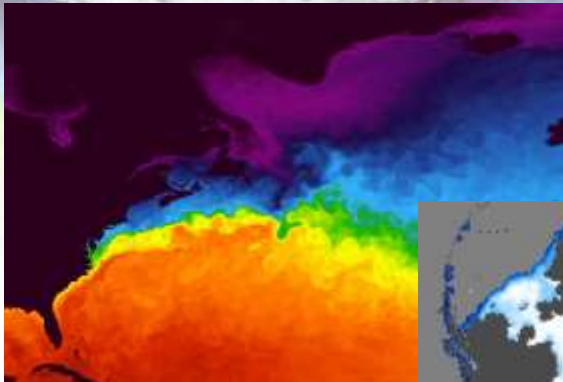
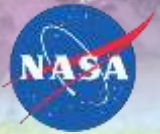
# NASA GIBS & Worldview

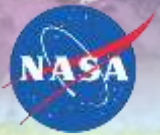
Discover our Trove of Visualizations

Matthew Cechini<sup>1</sup>, Ryan Boller<sup>2</sup>, Katie Baynes<sup>2</sup>









## Global Imagery Browse Services (GIBS)







# Worldview

**NASA WORLDVIEW**

Layers (6)

2016 NOV 07 < >

<p><b>All</b></p> <ul style="list-style-type: none"> <li>Aerosol Optical Depth</li> <li>Aerosol Single Scattering Albedo</li> <li>Areas of No Data (mask)</li> <li>Blue Marble</li> <li>Brightness Temperature</li> <li>Carbon Monoxide</li> <li>...</li> </ul>	<p><b>Air Quality</b></p> <ul style="list-style-type: none"> <li>Aerosol Optical Depth</li> <li>Carbon Monoxide</li> <li>Corrected Reflectance</li> <li>Dust Score</li> <li>Fires and Thermal Anomalies</li> <li>Nitric Acid</li> <li>...</li> </ul>	<p><b>Ash Plumes</b></p> <ul style="list-style-type: none"> <li>Aerosol Optical Depth</li> <li>Corrected Reflectance</li> <li>Fires and Thermal Anomalies</li> <li>Land Surface Reflectance</li> <li>Sulfur Dioxide</li> <li>Volcano Hazard</li> </ul>
<p><b>Drought</b></p> <ul style="list-style-type: none"> <li>Corrected Reflectance</li> <li>Dams</li> <li>Drought Hazard</li> <li>Land Surface Reflectance</li> <li>Land Surface Temperature</li> <li>Precipitation Estimate</li> <li>...</li> </ul>	<p><b>Dust Storms</b></p> <ul style="list-style-type: none"> <li>Aerosol Optical Depth</li> <li>Dust Score</li> <li>Corrected Reflectance</li> <li>Land Surface Reflectance</li> </ul>	<p><b>Fires</b></p> <ul style="list-style-type: none"> <li>Aerosol Optical Depth</li> <li>Fires and Thermal Anomalies</li> <li>Carbon Monoxide</li> <li>Corrected Reflectance</li> <li>Earth at Night</li> <li>Land Surface Reflectance</li> <li>...</li> </ul>
<p><b>Floods</b></p> <ul style="list-style-type: none"> <li>Corrected Reflectance</li> <li>Cloud Fraction</li> <li>Cloud Multi Layer Flag</li> <li>Cloud Phase</li> <li>Cloud Pressure</li> <li>Cloud Effective Radius</li> <li>...</li> </ul>	<p><b>Severe Storms</b></p> <ul style="list-style-type: none"> <li>Corrected Reflectance</li> <li>Cloud Fraction</li> <li>Cloud Multi Layer Flag</li> <li>Cloud Phase</li> <li>Cloud Pressure</li> <li>Cloud Effective Radius</li> <li>...</li> </ul>	<p><b>Shipping</b></p> <ul style="list-style-type: none"> <li>Corrected Reflectance</li> <li>Brightness Temperature</li> <li>Land Surface Reflectance</li> <li>Sea Ice</li> <li>Sea Surface Temperature</li> </ul>
<p><b>Smoke Plumes</b></p> <ul style="list-style-type: none"> <li>Aerosol Optical Depth</li> <li>Carbon Monoxide</li> <li>Corrected Reflectance</li> <li>Fires and Thermal Anomalies</li> <li>Land Surface Reflectance</li> </ul>	<p><b>Vegetation</b></p> <ul style="list-style-type: none"> <li>Corrected Reflectance</li> <li>Forests, Mangrove</li> <li>Freeze / Thaw</li> <li>Gross Primary Productivity</li> <li>Heterotrophic Respiration</li> <li>Land Surface Reflectance</li> <li>...</li> </ul>	<p><b>Other</b></p> <ul style="list-style-type: none"> <li>Areas of No Data (mask)</li> <li>Blue Marble</li> <li>Brightness Temperature</li> <li>Chlorophyll a</li> <li>Dams</li> <li>Earth at Night</li> <li>...</li> </ul>

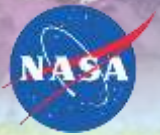
2000 km  
2000 mi

3750, -132.6094 EPSG:4326

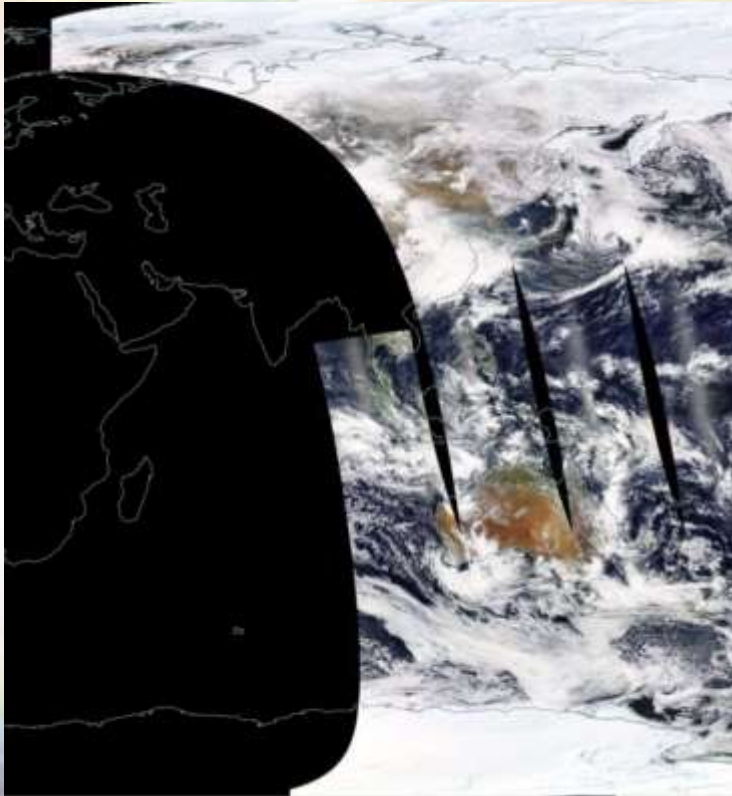
**DAYS**  
MONTHS





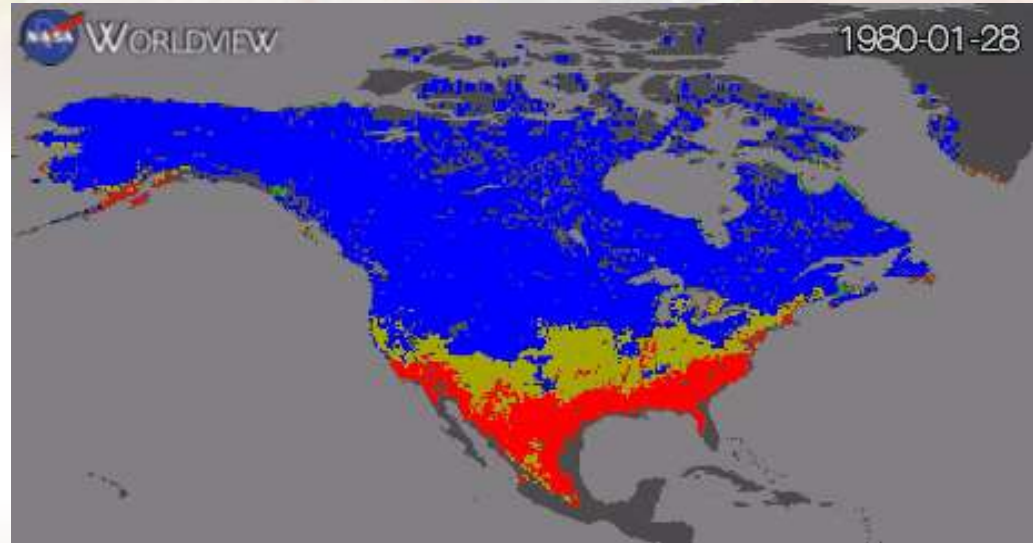


Near Real-Time



"Today's" True Color Imagery

Full Mission



Freeze/Thaw 1980 - 2010



EARTHDATA | land surface temperature | Temporal | Feedback | Earthdata Login

Back to Dataset Search

Project Datasets

Retrieve Project Data

MODIS/Aqua Land Surface Temperature/Emissivity 5-Min L2 Swath 1km V005

YEAR: MODIS/Aqua 2006

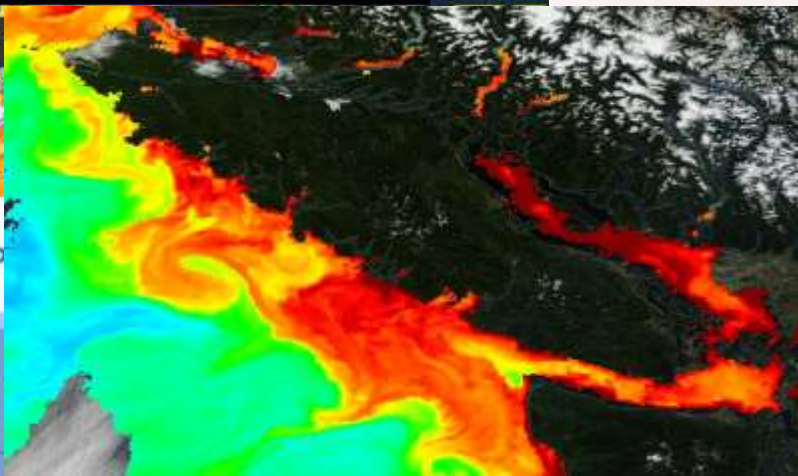


SCIENCE FOR THE CURIOUS

# Discover

Record Algae Bloom Laced With Toxins is Flourishing in "The Blob" — and Spreading in the North Pacific

By Tom Iqbalon | August 6, 2015 6:44 pm

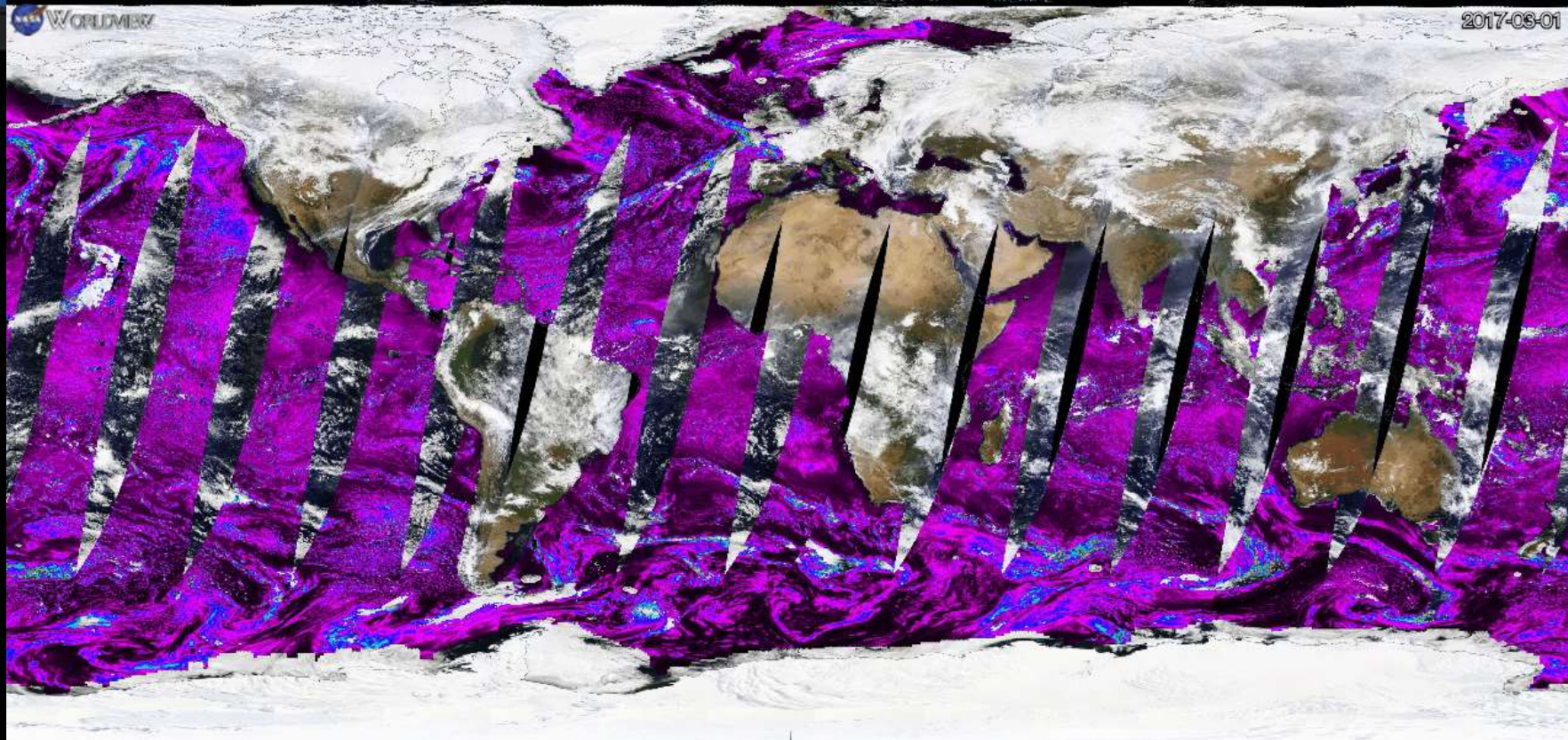


Tiempo y Clima @portalmeteo · Jul 15

#July16 #TYPHOONNANGKA over #Japan #NASAWORLD #JapanMeteorologicalAgency







00 km

-117.2085°, 196.1817° EPSG:4326

2017 MAR 01 < > 📺

FEB 2017



MAR 2017

APR 2017

DAYS MONTHS YEARS



OVERLAYS

- Place Labels  
© OpenStreetMap (license), Natural Earth
- Coastlines / Borders / Roads  
© OpenStreetMap (license), Natural Earth
- Coastlines  
© OpenStreetMap (license)

BASE LAYERS

- Corrected Reflectance (True Color)  
Suomi NPP / VIIRS
- Corrected Reflectance (True Color)  
Aqua / MODIS
- Corrected Reflectance (True Color)  
Terra / MODIS

+ Add Layers

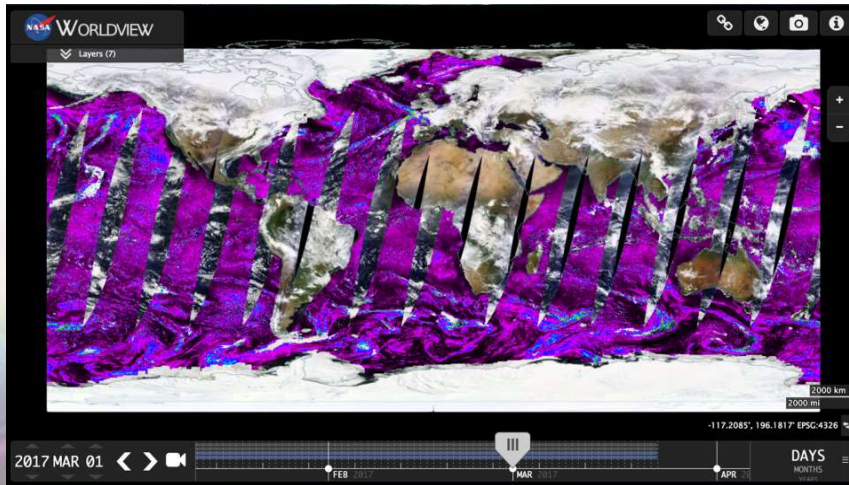
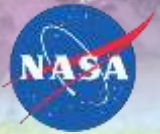


2017 MAR 29



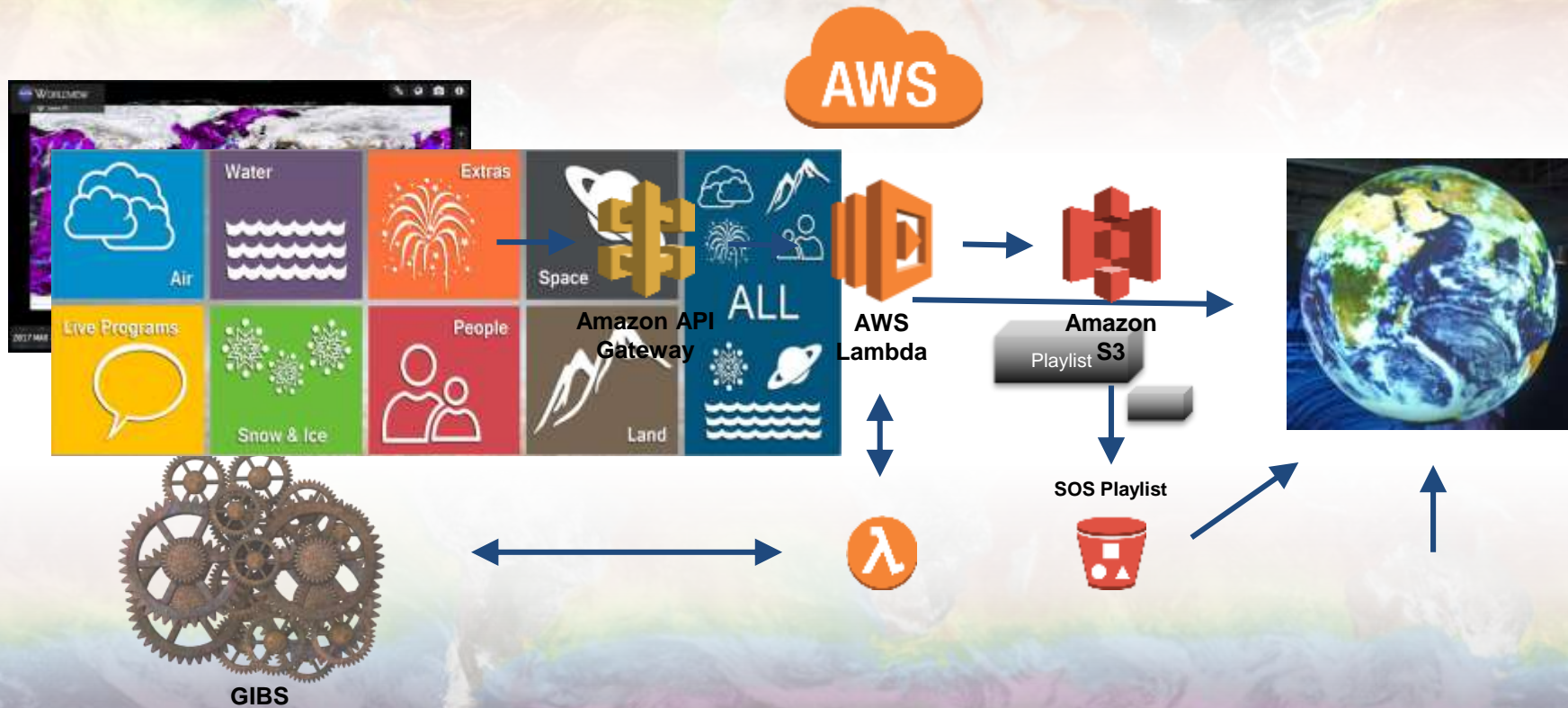
DAYS MONTHS YEARS



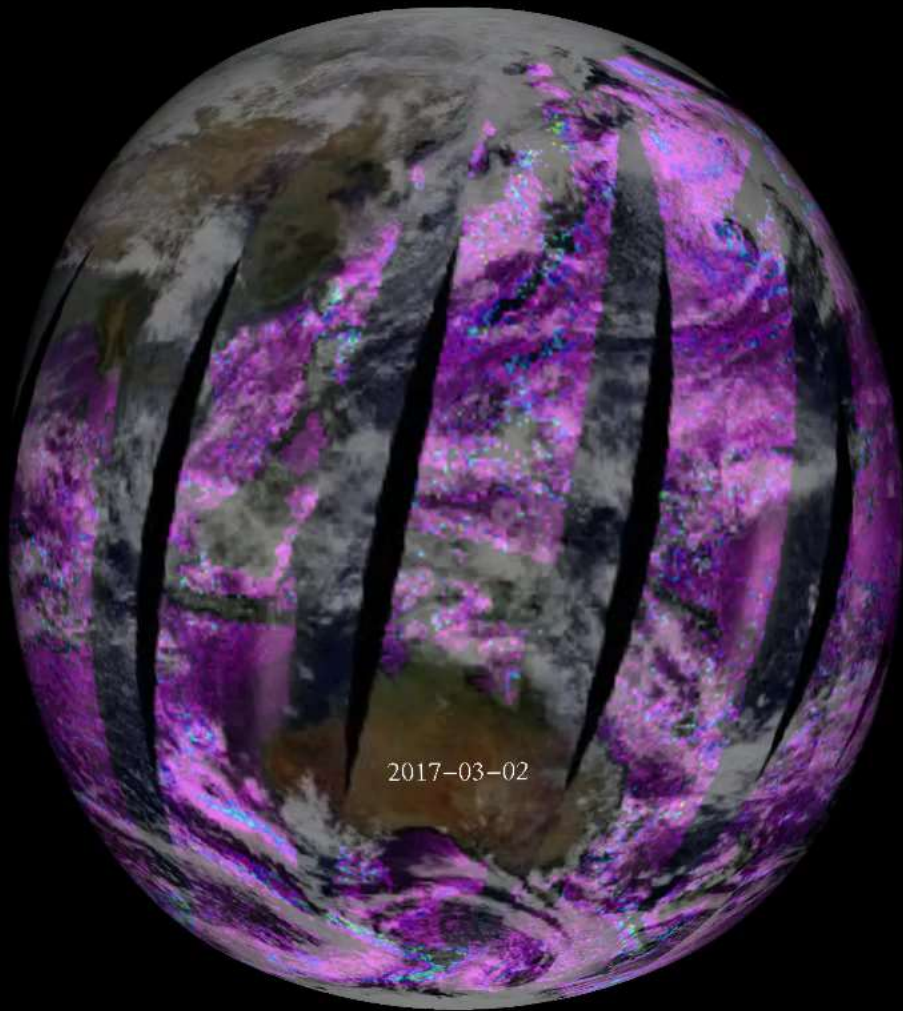
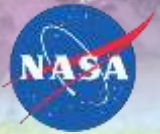




# Prototype Capability







2017-03-02

For

tv

E-2

Ad

:

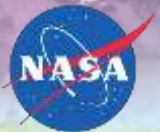
Ac

sk

ut

NS:

DI



# What's next?

Is this something that the SOS community is interested in?



Is there interest in a shared catalog for NASA SOS datasets?

How can we make this simple for you to use?

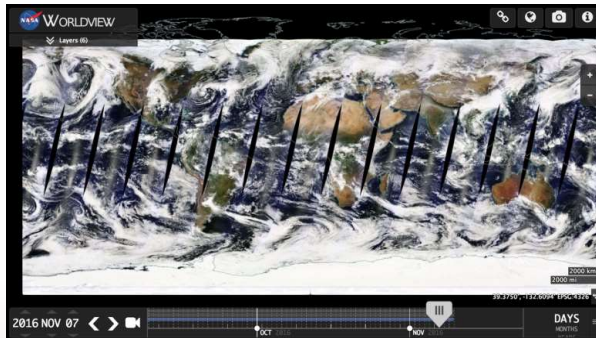
Are there imagery products or periods (e.g. weekly) we don't have that you would like to see?





Thank You!

Worldview



<https://worldview.earthdata.nasa.gov>

GIBS



<https://earthdata.nasa.gov/gibs>

Email



[support@earthdata.nasa.gov](mailto:support@earthdata.nasa.gov)