

Climate Connections in Virginia: Your Actions Matter

Jeremy S. Hoffman, PhD
Science Museum of Virginia





Science Museum of Virginia

Director: Rich Conti

“Climate is the defining scientific issue of our time.”

“Write without fear, edit without mercy.” – R. Mitchell-Jones



“When the going gets weird, the weird turn pro.” – H.S. Thompson





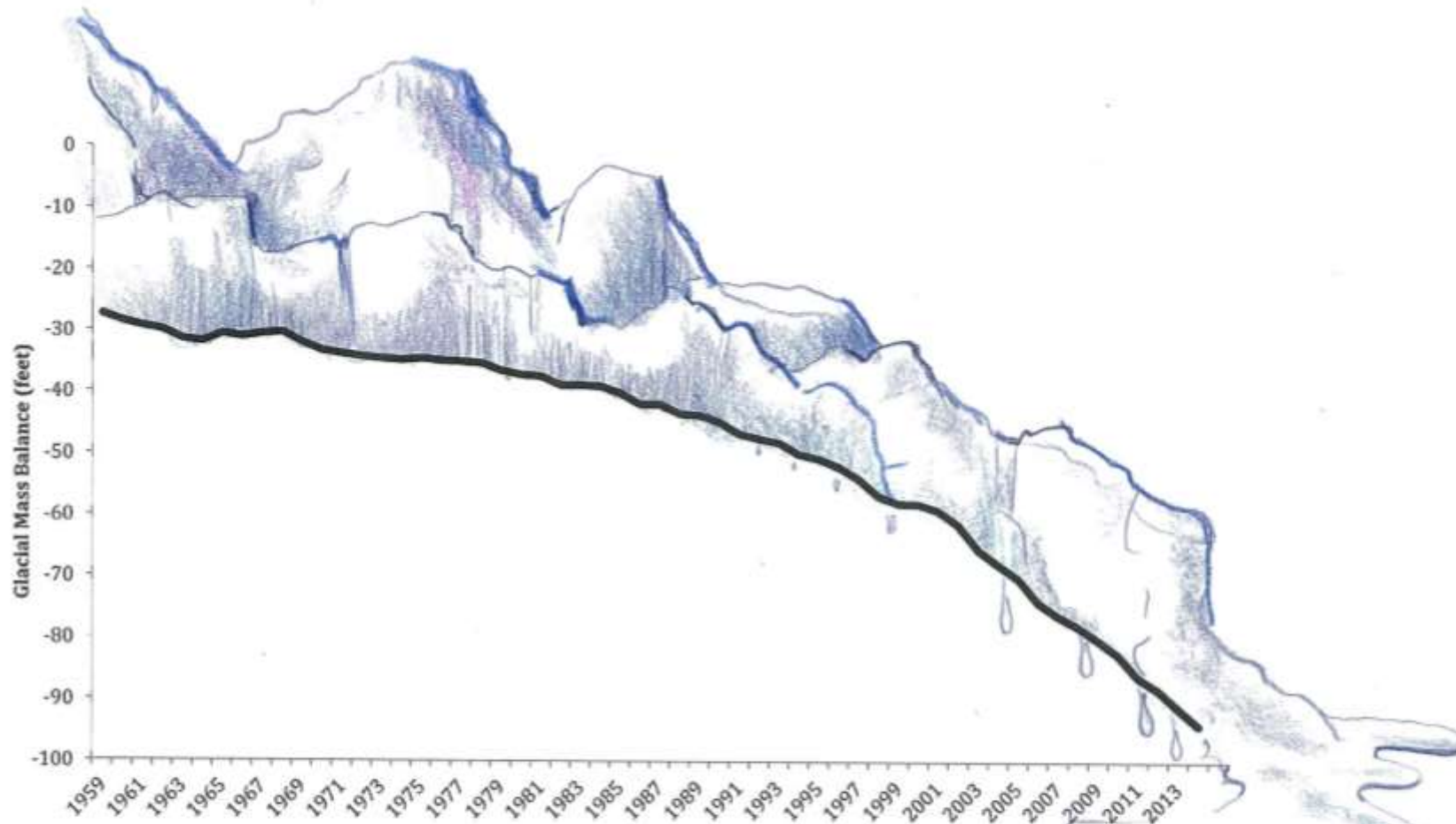
TROUBLE IN PARADISE

ATWAVE GRIPS ARCTIC: GLOBAL WARMING OR POLAR BEAR ACTIV

A blue-tinted photograph of a person in a dark wetsuit holding a white surfboard. The word "HEAT" is overlaid in large yellow letters. The background shows a white wall with metal pipes.

HEAT





Glacial Volume Decrease

www.epa.gov/climatechange/indicators

Causes: Increased air and ocean temperatures

Effects: Arctic habitat loss, ocean level rise, changes in ocean water chemistry, and changes in ocean circulation





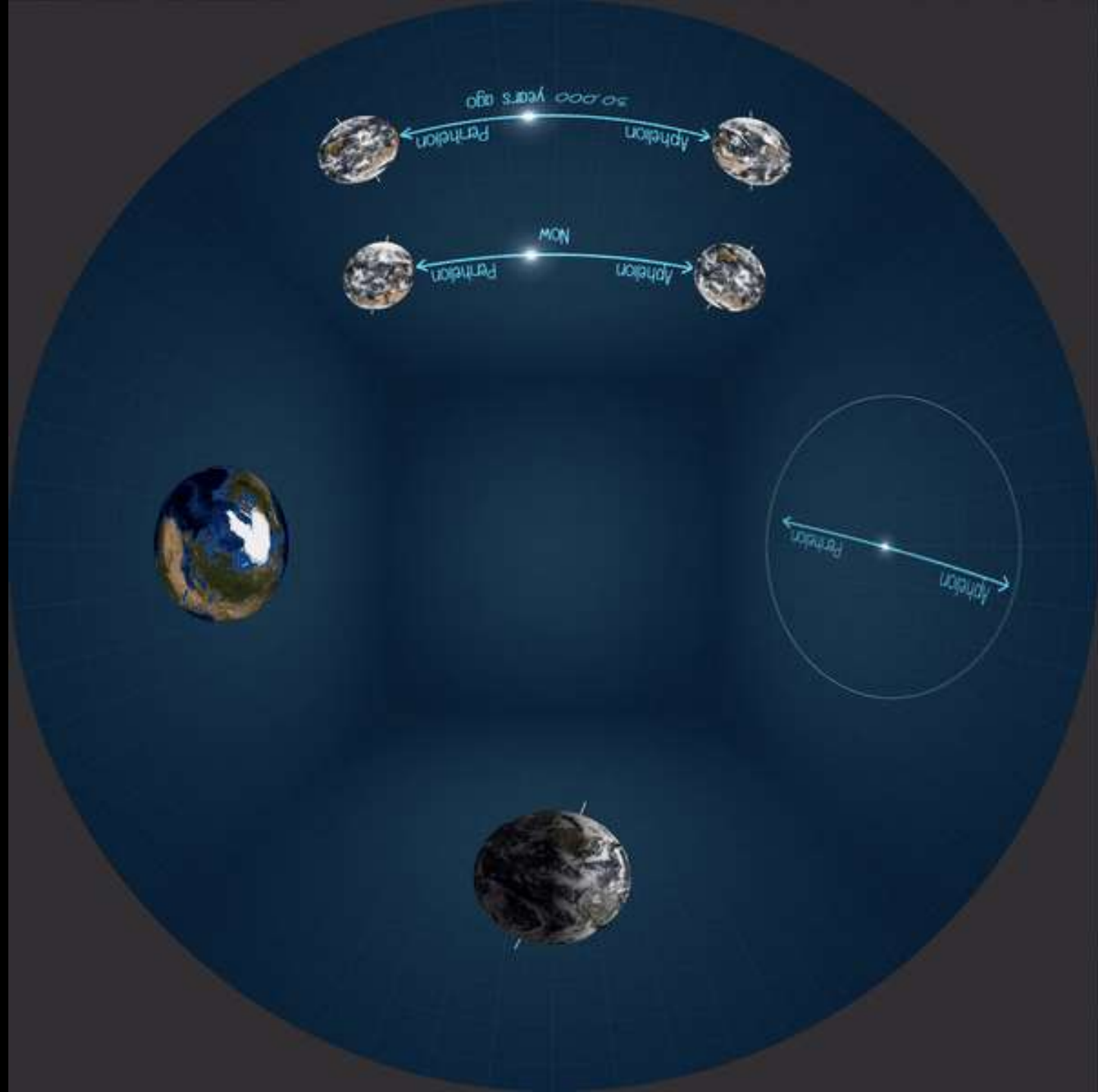


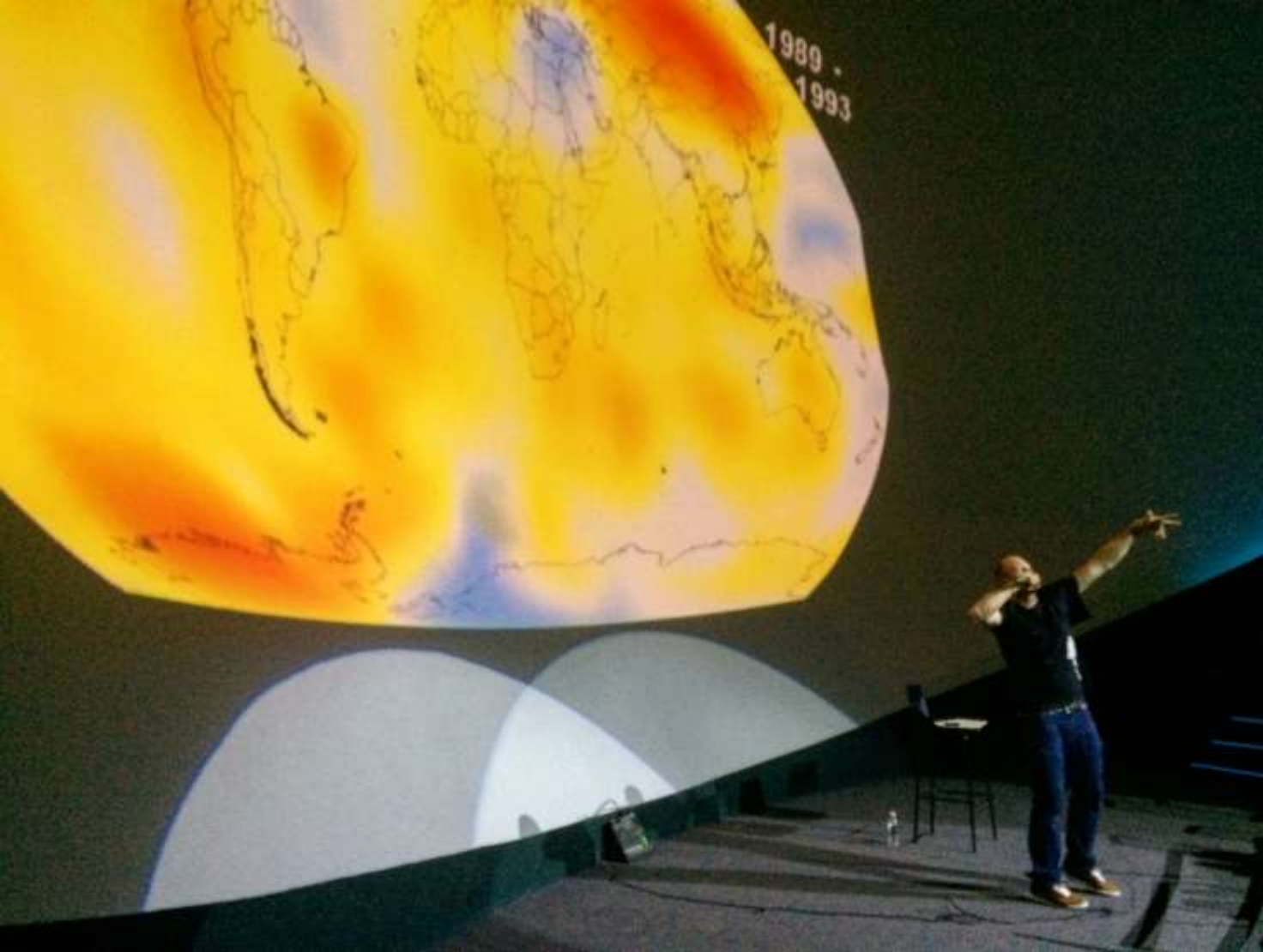
Climate & Urban
Systems Partnership



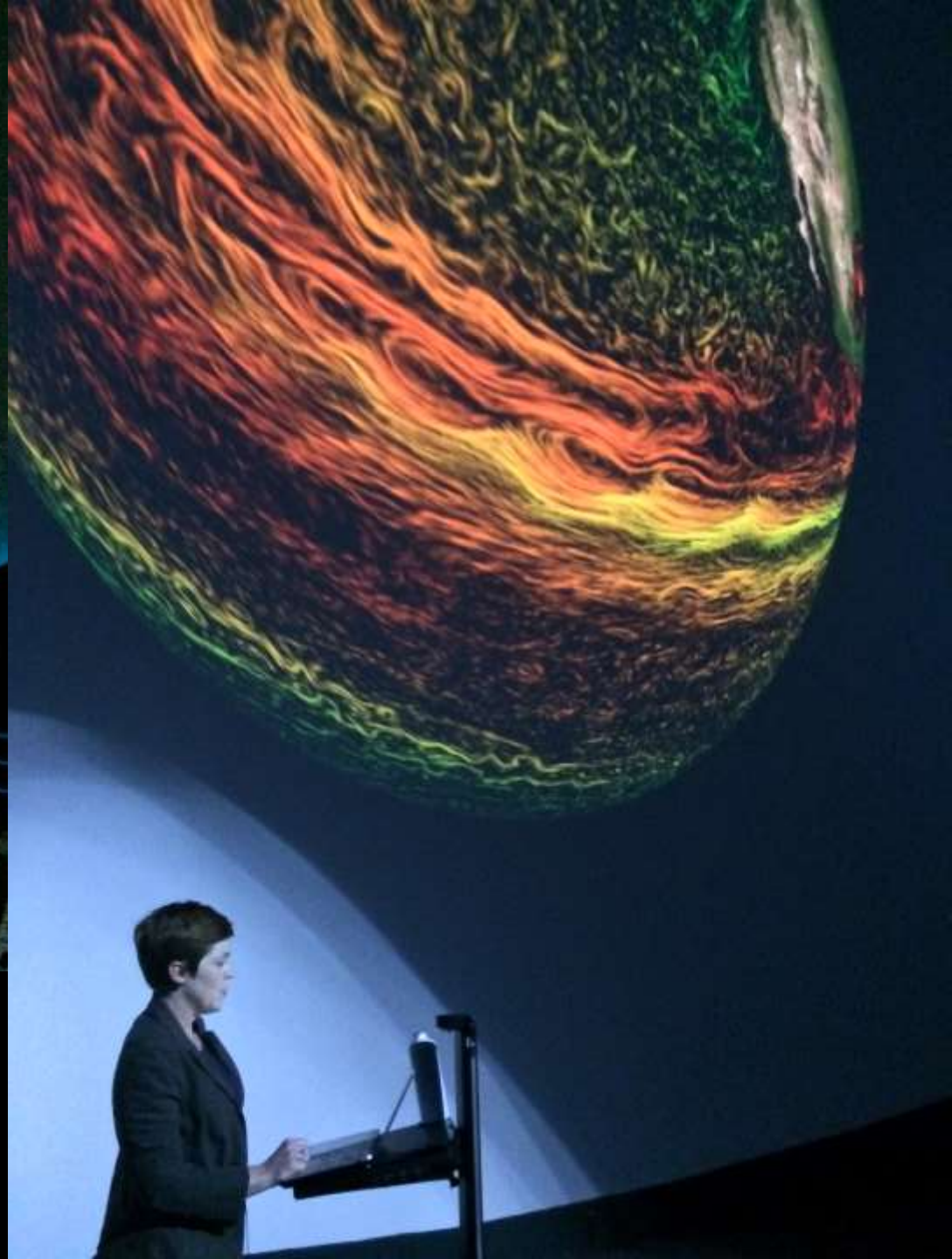


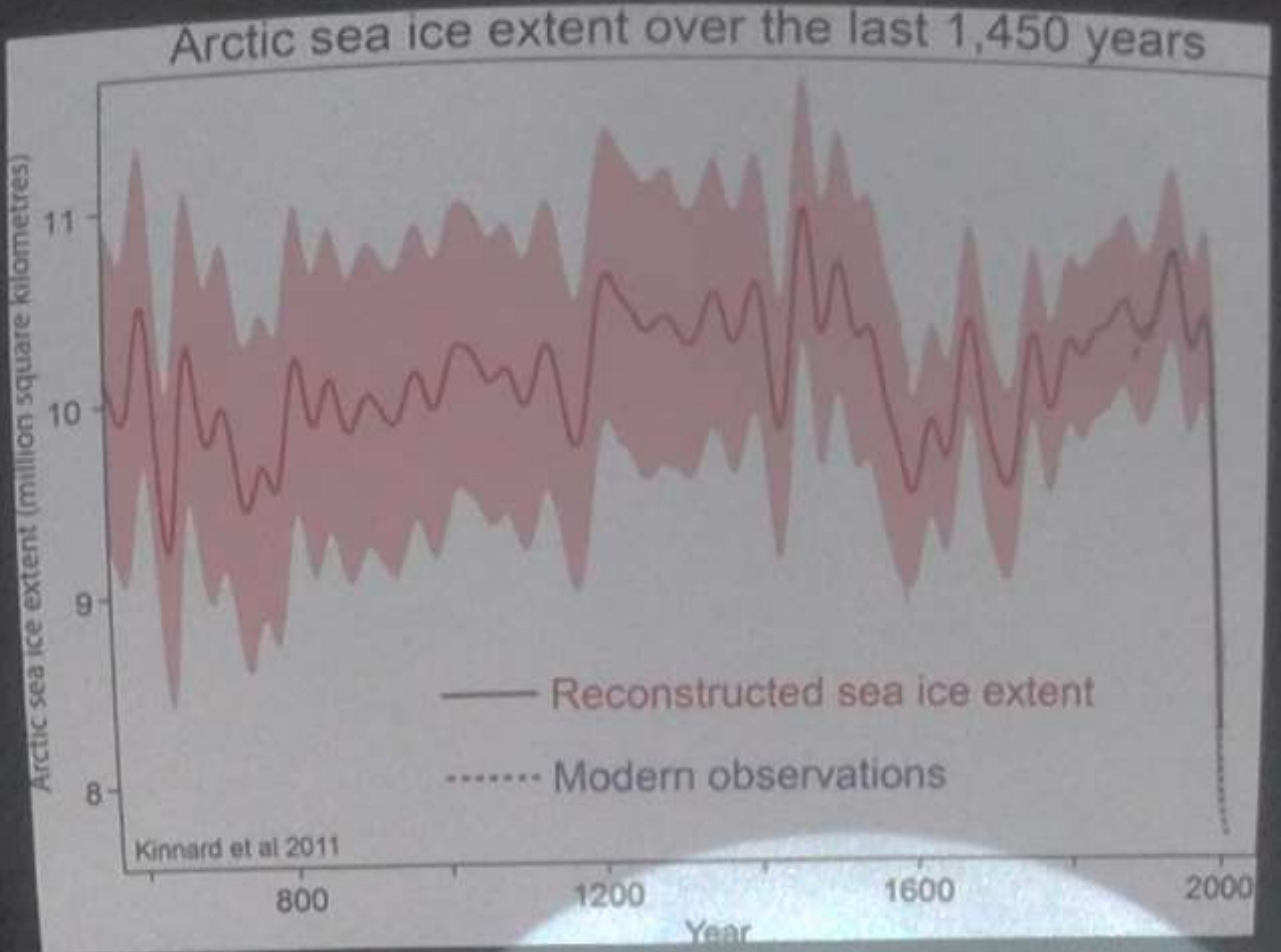
**MUSEUM
EDUCATORS
NEED TO FEEL
CONFIDENT!**

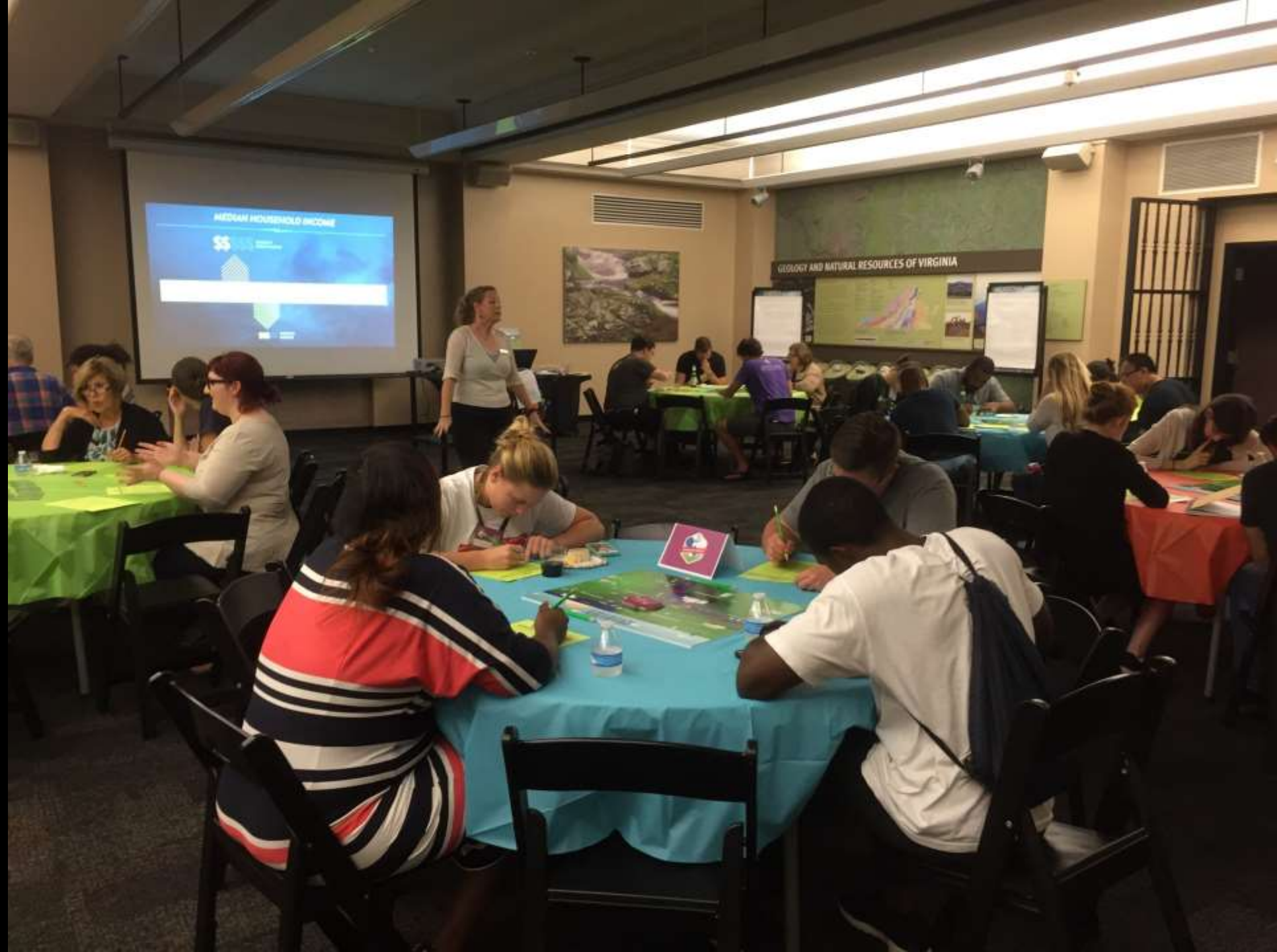




5 weeks – 751 guests







LAKESHORE

The reservoir will soon flood River University's research laboratories. What will you do?

Option A: Close the highway to divert traffic from the reservoir. (Closing a Road in the budget budget. You need.)

OR

Option B: Allow the Metropolitan Flood to be done to prevent the historic district. (You need.)

COORDINATION			PLANNING		
SAFETY			BACKUP POWER		
COMMUNICATION			SECURITY		
BLOOD MATCH			PHARMACEUTICALS CONTRACT		
PLANNING			MARKET INTEGRATION		

PrepareAthon

at the Science Museum of Virginia
Saturday, August 27 • 11 am – 4 pm

Prepare yourself for extreme events during **PrepareAthon**, a free community event on **August 27**. Uncover life-saving information to protect your family during an emergency and learn more about resiliency.



~3,000 guests



>30 NGO/GOs



SCIENCE MUSEUM OF VIRGINIA

FIELD TRIP GUIDE FALL 2016



