

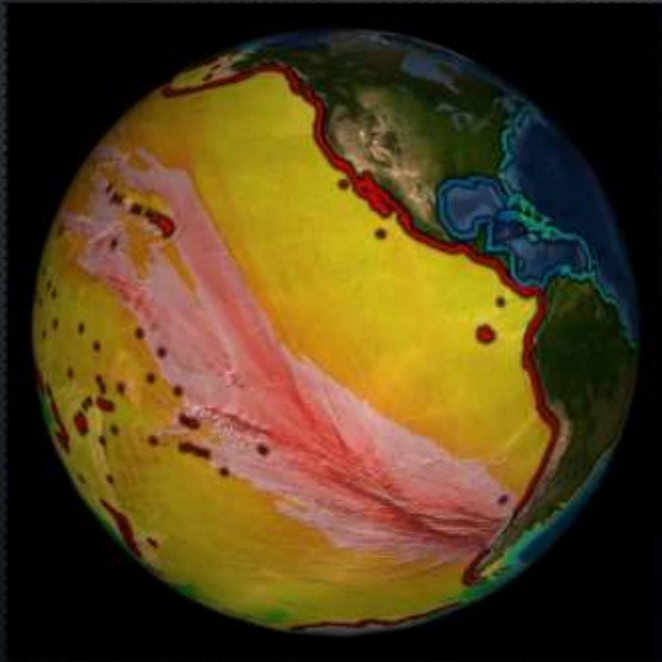
SOS EDUCATION FORUM



Hilary Peddicord
Team Educator
SOS Workshop 2017
hilary.peddicord@noaa.gov



WHAT IS IT?



Leon Geschwind
NOAA Office of Coastal Management, NOS

TSUNAMI HISTORICAL SERIES

5 DATASETS AVAILABLE (SO FAR):

- CASCADIA – 1700
- ALEUTIAN ISLANDS – 1946
- ALASKA – 1964
- JAPAN – 2011
- CHILE – 2010
- CHILE - 1960

The screenshot shows the GoToMeeting Control Panel interface. At the top, it says "GoToMeeting Control Panel" and "Screen Sharing" with the status "Not showing anything...". Below this are four main controls: "Show Main Screen" (with a play icon), "Stop Showing Screen" (with a square icon), "Give Keyboard & Mouse" (with a mouse icon), and "Change Presenter" (with a person icon). There are also "Record" and "Settings" buttons. The "Attendees" section shows "Attendees: 1 of 101 (max)" and a list of participants including "Names - Alphabetically" and "HBarry Peddicord - Organizer, Presenter, Me". The "Audio" section shows "Computer audio" selected, with "Bull-in Microphone" and "Apple USB audio device" listed. The "Talking" section shows "Webcam" and "Chat" options. At the bottom, there is a "Type message here" input field, a "To: All - Entire Audience" dropdown, and the "Meeting ID# 688-351-837" and "GoToMeeting" logo.



PURPOSE



abreast 

[uh-brest]

[Examples](#) [Word Origin](#)

[See more synonyms on Thesaurus.com](#)

adverb, adjective

1. side by side; beside each other in a line:
They walked two abreast down the street.
2. equal to or alongside in progress, attainment, or awareness (usually followed by *of* or *with*):
to keep abreast of scientific developments; keeping abreast with the times.



IN THE SOS EDUCATION FORUM ... LEARN ABOUT:

- COOL new ways of using SOS
 - Community engagement
 - Student activities and techniques
 - Deeper connection through Art
- Keep up to speed on datasets & features
 - Dataset enlightenment
 - Live program peeks
 - SOS software evolution



ART & THE SPHERE



Museum of Natural History
Halifax, Nova Scotia, Canada



ART EXERCISE & THE SPHERE



Nurture Nature Center
Easton, Pennsylvania



ART & THE SPHERE

Patterns of the Jewel Beetle

Museum of Arts & Sciences
Macon, Georgia



Divergent Plate Boundary

For example:

> Dataset: Volcano Location with Plate Tectonic overlay

- Divergent Plate Boundary: two plates move away from each other. Students gently pull the edges of the candy bar. They will notice the plate movement reveals the asthenosphere (caramel/nuts).
- Volcanoes are found along the Divergent plate boundaries
- The magma under the earth oozes up between the plates and hardens to become new crust.



Boonshoft Museum
Dayton, Ohio



STUDENTS

Convergent Plate B

> Dataset: Real-Time Earthquake

- Convergent Plate Boundary: two plates push against each other. Mountains occur at this boundary.
- Students gently push the two halves of their candy bar together. Mountains occur at this boundary! Do you think an earthquake would occur along this boundary as well?

STUDENTS



Kid Art Contests



Snow Globe Art Contest

See Your Art Made into a Giant 3D Snow Globe!

Calling all budding artists! Here's your chance to create a piece of artwork that can be seen around the globe of the Aldo Leopold Nature Center! To enter, draw, paint or color a winter scene using the snow globe template on the back side of this entry form. Get creative—your art can depict animals, trees, animal tracks and anything else you see outdoors in winter!

The entry from each age category (3-6, 7-9, 10-13, and 14-18 years old) will be selected to be transformed into a 3-foot-wide glowing snow globe during a special preview of new exhibits and programs at the Aldo Leopold Nature Center on Thursday, December 28th from noon to 7 pm. Winning artists will receive free admission for themselves and their immediate family to the special preview.

Contest is open for ages 3 to 18 years old. One entry per child. Winners will be contacted with further instructions.

This entry form and artwork must be received by awcannon@naturemt.com, mailed, or dropped off at the Aldo Leopold Nature Center, 14115 Snow Globe Center, Aldo Leopold Nature Center, 330 Forester Drive, Murree, MT 59713 by Noon on Monday, December, 29th, 2011.



CONTEST ENTRY FORM – To be filled out by parents.

Child's Name: _____ Child's Age (select one): 3-6 7-9 10-13 14-18
 Parent's Name: _____ Parent's Email: _____
 Parent's Phone Number: _____ Home Address: _____
 City: _____ State: _____ Zip/Postal Code: _____

Remember to join us at the Aldo Leopold Nature Center on Thursday, December 28th from noon to 7 pm to see the winning art at our special preview of brand new interactive exhibits and programs!





GLASS: COLOR GREEN

Boulder Team at the Denver Museum of Nature & Science

Aldo Leopold Nature Center



VISUAL PLAYLIST EDITOR TRAINING

The screenshot shows the Visual Playlist Editor software interface. The main window displays a 3D globe with a collage of puppy images. On the left, there is a control panel with various settings for the playlist, including file name, style, dimensions, and display options. Below the main window, there is a timeline and a list of playlist items.

File Presentation Default Language Help

New Open... Save

Mode Presentation Default

About Global Animation Description Element

Select PIP data

test.html

Image/Movie Directory Text

Name test.html

Style Projector

Constrain dimensions

width 18.74

height 14.11

PIP is visible

Opacity 1.00

Display time (seconds) Always show

Delay time (seconds) 0.00

Fadein time (seconds) 0.00

Fadeout time (seconds) 0.00

Frames per second 30.00

PIP offset (warped near poles)

PIP coordinates (not warped near poles)

PIP longitude (degrees) 1.11

PIP latitude (degrees) 1.05

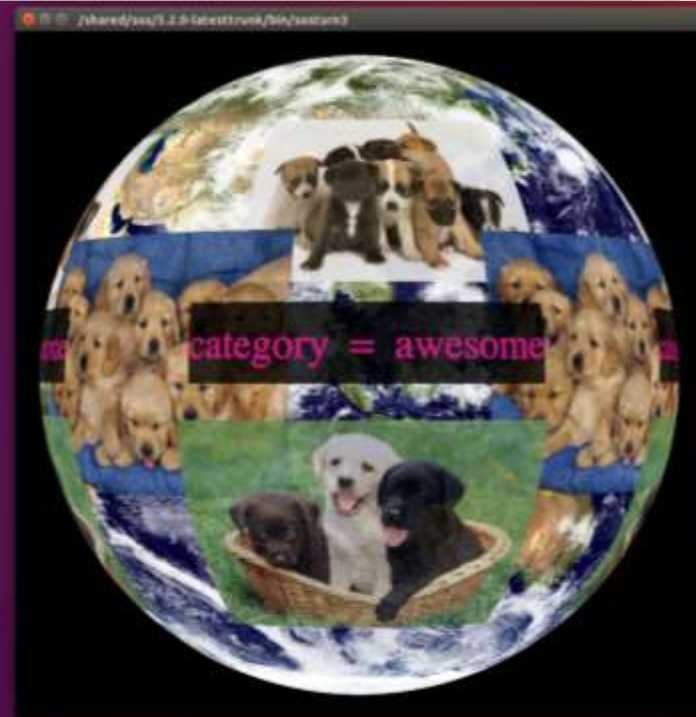
Edit PIP Text

Add Layer PIP Layer Audio

Time (seconds) Frame #

Layer Blue Marble	⊖ ⊕ ↕ ✕
PIP puppy01.jpg	⊖ ⊕ ↕ ✕
PIP puppy01.jpg	⊖ ⊕ ↕ ✕
PIP puppy01.jpg	⊖ ⊕ ↕ ✕
PIP Text test.html	⊖ ⊕ ↕ ✕

Default: /shared/ssa/3.2.0-label/trunk/3d/visual/



CONTENT IN DEPTH – BIRD MIGRATION

Example: American Golden-Plover
(*Pluvialis dominica*)

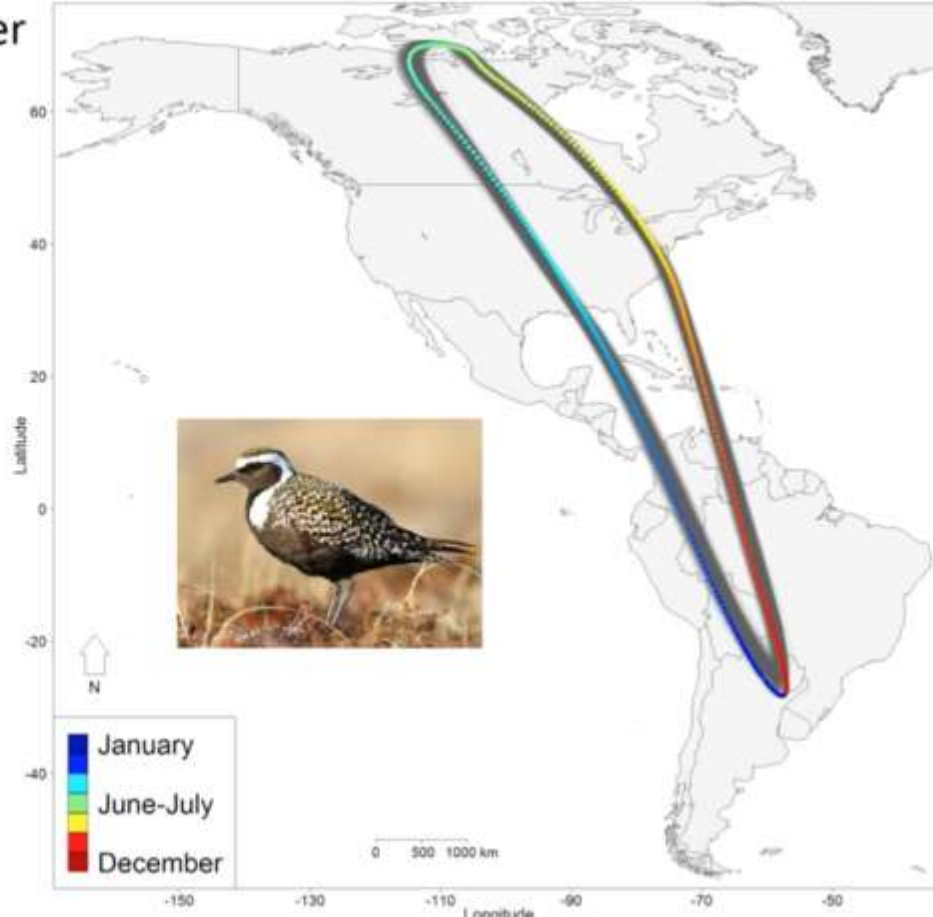
American Golden-Plover
Pluvialis dominica



LEGEND

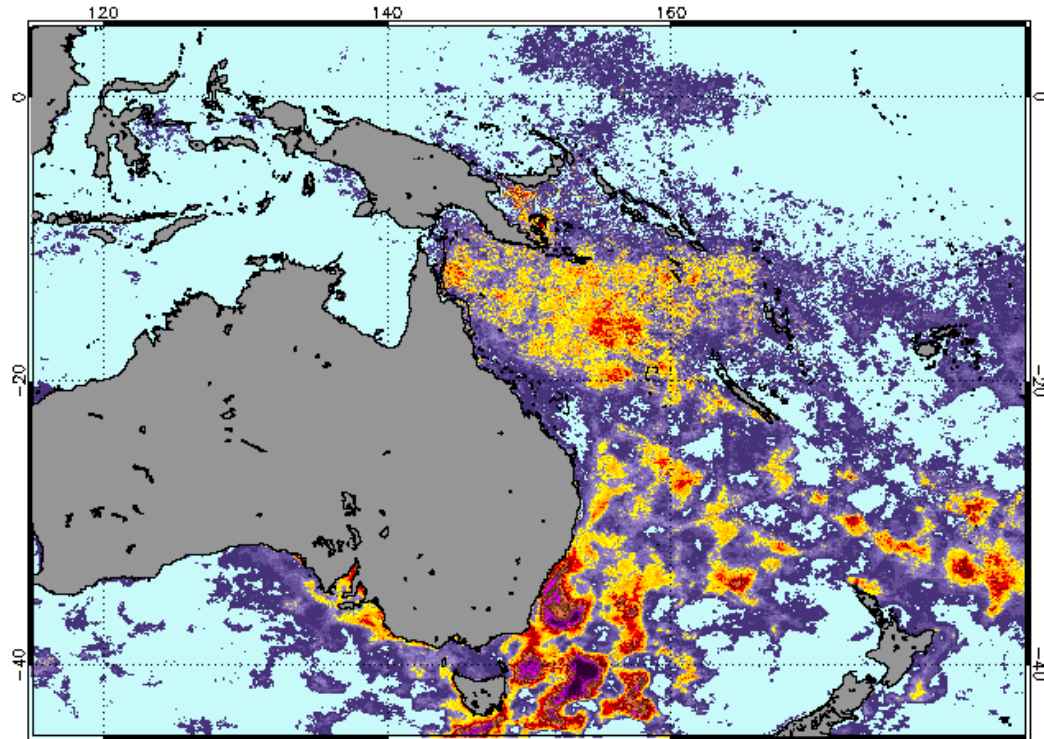
- Year Round
- Summer (breeding)
- Winter (non-breeding)
- Migration

Map by Cornell Lab of Ornithology
Range data by NatureServe



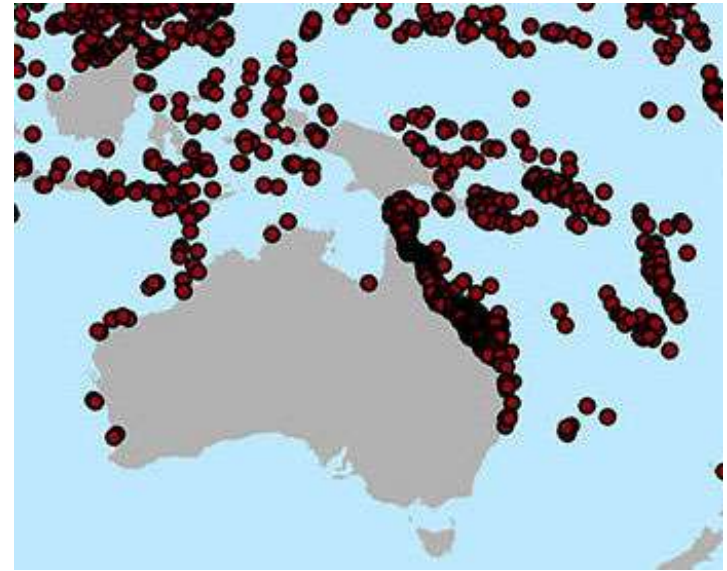
CONTENT IN DEPTH – RT CORAL BLEACHING

NOAA CRW Daily 5-km Geo-Polar Blended Night-Only DHW 16 Apr 2017



Two-thirds of Great Barrier Reef ravaged by coral bleaching

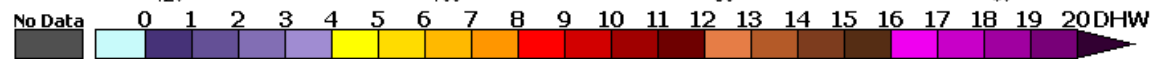
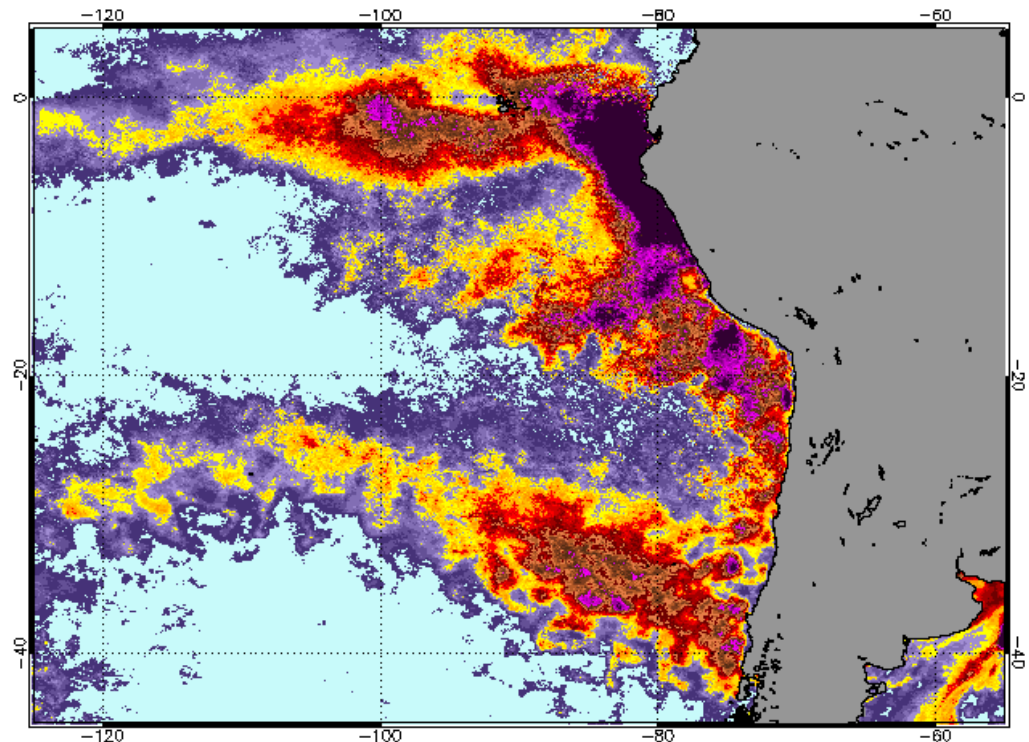
USA TODAY NETWORK Mary Bowman, USA TODAY Network 8:47 a.m. ET April 16, 2017



No Data 0 1 2 3 4 5 6 7 8 9 10 11 12 13 14 15 16 17 18 19 20 DHW

CONTENT IN DEPTH – RT CORAL BLEACHING

NOAA CRW Daily 5-km Geo-Polar Blended Night-Only DHW 17 Apr 2017



WHAT'S IN THE NEW(S) DATASETS



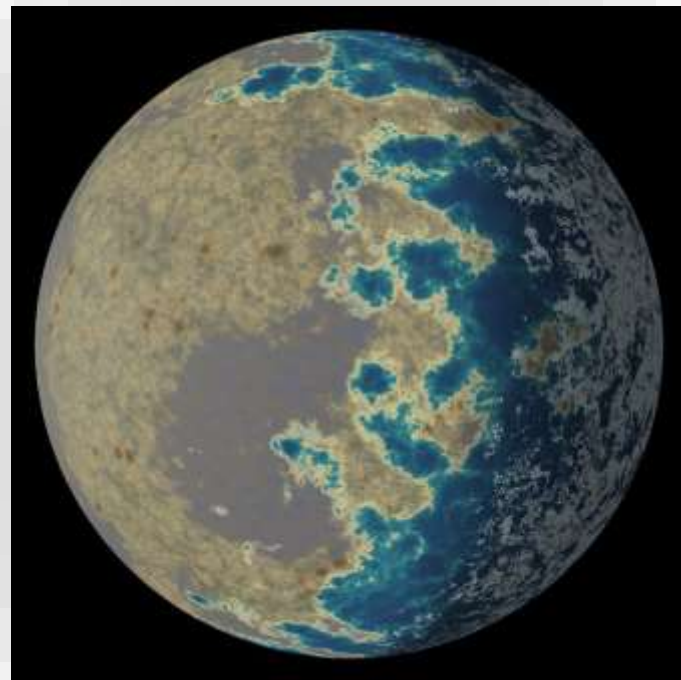
Water could exist on Proxima b, but the planet's surface (imagined here) may be blasted by radiation from its laring red sun.

ESO/M. Auro



Earth-like planet found orbiting our nearest stellar neighbor

By Daniel Clery | Aug. 24, 2016, 1:00 PM



TRAPPIST-1 Datasets



HOW TO JOIN

For the listserv: Email me.

hilary.peddicord@noaa.gov

For the webinars: Just attend!

THANK YOU!

Without you, we wouldn't be us.

HOW TO WATCH THE ARCHIVE

https://sos.noaa.gov/Education/ed_forum.html

