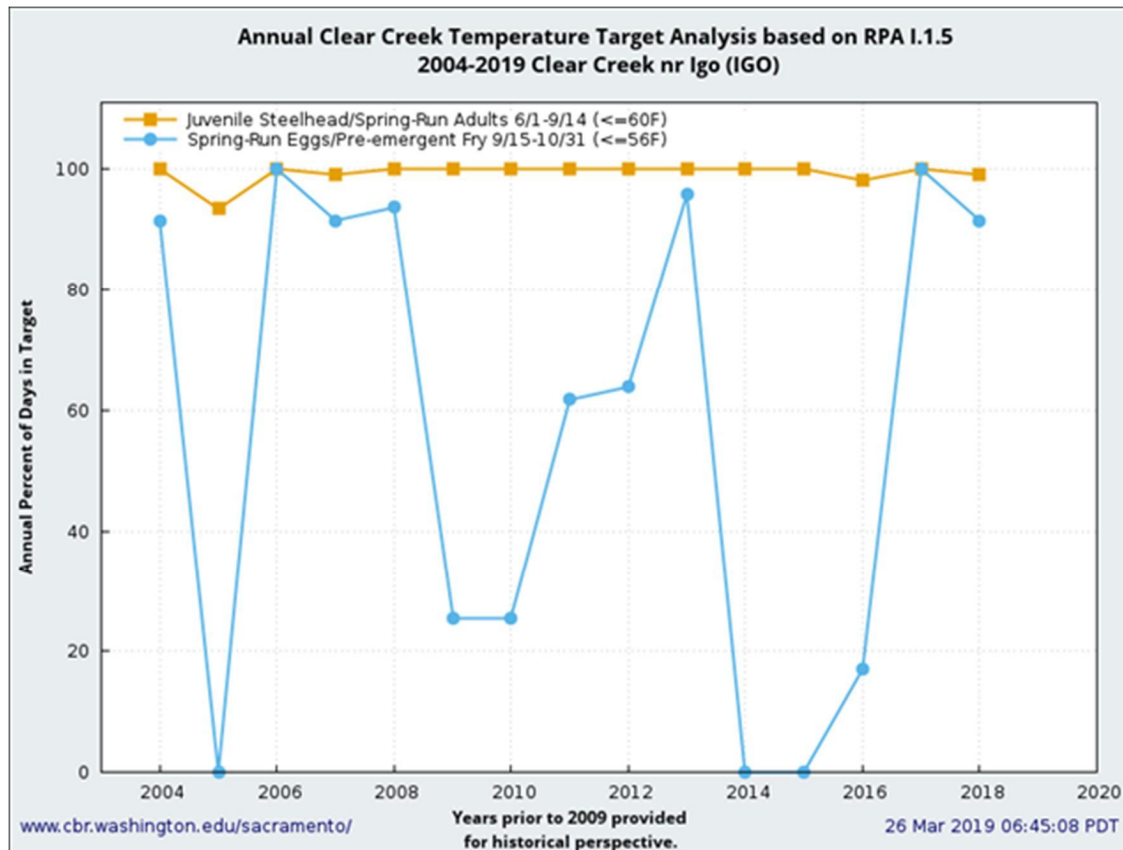


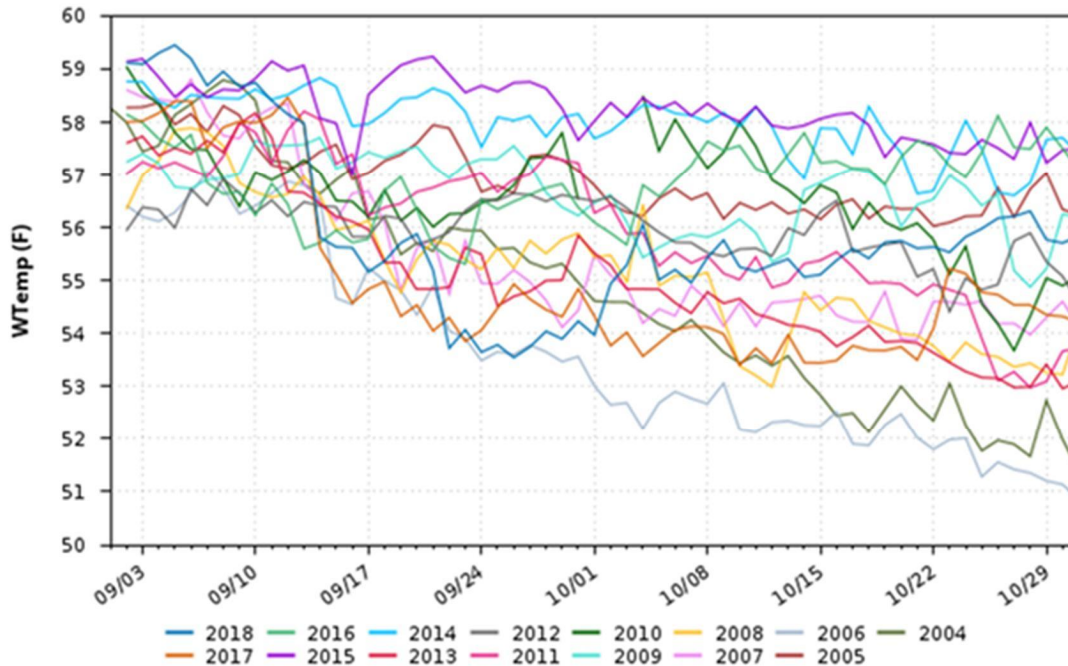
From: Sarah Gallagher - NOAA Federal <sarah.gallagher@noaa.gov>
Sent: Wednesday, April 17, 2019 2:06 PM
To: Brian Ellrott - NOAA Federal
Subject: Re: RPAs and baseline

Ok, thanks. I will add that part, it's a good point.

FYI graph regarding percentage of days in temperature criteria. Graph below gives an idea of the range of MDT experienced in those years during the spawning/incubation period.



Water Temperature IGO



Sarah Gallagher | Fish Biologist

[NOAA Fisheries](#) | [West Coast Region](#)

U.S. Department of Commerce

650 Capitol Mall, Suite 5-100, Sacramento, CA 95814

916-930-3712 | Sarah.Gallagher@noaa.gov

On Wed, Apr 17, 2019 at 1:40 PM Brian Ellrott - NOAA Federal <brian.ellrott@noaa.gov> wrote:

Thanks Sarah. That makes sense. If you haven't already please state in the effects section that there is uncertainty regarding whether the geomorphic flows will be implemented given that they have not been implemented for 10 years despite there being a regulatory requirement to do so. Or something to that affect that is accurate.

On Wed, Apr 17, 2019 at 3:28 PM Sarah Gallagher - NOAA Federal <sarah.gallagher@noaa.gov> wrote:

Talked to Garwin about 09 RPAs in the baseline.

-RPAs that were not completed or addressed are in the baseline and stated as such (*geomorphic flows; temperature model; long term flow prescription*)

-RPAs that were completed or carried out are in the baseline (*pulse flows, base flows and temperature management*)

-If RPA actions are continued to be proposed, they are part of the PA (*all of the above actions except the temperature model and long-term flow prescription, which were dropped*). Geomorphic flows are different because of the magnitude proposed and option for mechanical mobilization.

Sarah Gallagher | Fish Biologist

[NOAA Fisheries](#) | [West Coast Region](#)

U.S. Department of Commerce

650 Capitol Mall, Suite 5-100, Sacramento, CA 95814

916-930-3712 | Sarah.Gallagher@noaa.gov

--

Brian Ellrott

Central Valley Salmonid Recovery Coordinator

NOAA Fisheries West Coast Region

U.S. Department of Commerce

Mobile: 916-955-7628

Office: 916-930-3612

brian.ellrott@noaa.gov