

Water Year Type	Sorted by WYT		Water Year Type	Water Year Types Separately				
	WUA COS	WUA PA		WUA		Percentage		Perce
				COS5	PA20	COS5	PA20	COS5
1	7,948	0	1	7,948	0	100%	100%	100%
1	7,948	1,737	1	7,948	1,737	96%	96%	99%
1	7,948	7,948	1	7,948	7,948	92%	92%	98%
1	7,948	7,948	1	7,948	7,948	88%	88%	96%
1	7,948	7,948	1	7,948	7,948	84%	84%	95%
1	7,948	7,948	1	7,948	7,948	80%	80%	94%
1	7,948	7,948	1	7,948	7,948	76%	76%	93%
1	7,948	7,948	1	7,948	7,948	72%	72%	91%
1	7,948	7,948	1	7,948	7,948	68%	68%	90%
1	7,948	7,948	1	7,948	7,948	64%	64%	89%
1	7,948	7,948	1	7,948	7,948	60%	60%	88%
1	7,948	7,948	1	7,948	7,948	56%	56%	86%
1	7,948	7,948	1	7,948	7,948	52%	52%	85%
1	7,948	7,948	1	7,948	7,948	48%	48%	84%
1	7,948	7,948	1	7,948	7,948	44%	44%	83%
1	7,948	7,948	1	7,948	7,948	40%	40%	81%
1	7,948	7,948	1	7,948	7,948	36%	36%	80%
1	7,948	7,948	1	7,948	7,948	32%	32%	79%
1	7,948	7,948	1	7,948	7,948	28%	28%	78%
1	7,948	7,948	1	7,948	7,948	24%	24%	77%
1	7,948	7,948	1	7,948	7,948	20%	20%	75%
1	7,948	7,948	1	7,948	7,948	16%	16%	74%
1	7,948	7,948	1	7,948	7,948	12%	12%	73%
1	7,948	7,948	1	7,948	7,948	8%	8%	72%
1	7,948	7,948	1	7,948	7,948	4%	4%	70%
1	7,948	7,948	1	7,948	7,948	0%	0%	69%
2	7,948	7,948	2	7,948	7,948	100%	100%	68%
2	7,948	7,948	2	7,948	7,948	92%	92%	67%
2	7,948	7,948	2	7,948	7,948	83%	83%	65%
2	7,948	7,948	2	7,948	7,948	75%	75%	64%
2	7,948	7,948	2	7,948	7,948	67%	67%	63%
2	7,948	7,948	2	7,948	7,948	58%	58%	62%
2	7,948	7,948	2	7,948	7,948	50%	50%	60%
2	7,948	7,948	2	7,948	7,948	42%	42%	59%
2	7,948	7,948	2	7,948	7,948	33%	33%	58%
2	7,948	7,948	2	7,948	7,948	25%	25%	57%
2	7,948	7,948	2	7,948	7,948	17%	17%	56%
2	7,948	7,948	2	7,948	7,948	8%	8%	54%
2	7,948	7,948	2	7,948	7,948	0%	0%	53%
3	7,948	7,948	3	7,948	7,948	100%	100%	52%
3	7,948	7,948	3	7,948	7,948	90%	90%	51%
3	7,948	7,948	3	7,948	7,948	80%	80%	49%

3	7,948	7,948	3	7,948	7,948	70%	70%	48%
3	7,948	7,948	3	7,948	7,948	60%	60%	47%
3	7,948	7,948	3	7,948	7,948	50%	50%	46%
3	7,948	7,948	3	7,948	7,948	40%	40%	44%
3	7,948	7,948	3	7,948	7,948	30%	30%	43%
3	7,948	7,948	3	7,948	7,948	20%	20%	42%
3	7,948	7,948	3	7,948	7,948	10%	10%	41%
3	7,948	7,948	3	7,948	7,948	0%	0%	40%
4	7,948	1,737	4	7,948	1,737	100%	100%	38%
4	7,948	7,948	4	7,948	7,948	95%	95%	37%
4	7,948	7,948	4	7,948	7,948	89%	89%	36%
4	7,948	7,948	4	7,948	7,948	84%	84%	35%
4	7,948	7,948	4	7,948	7,948	79%	79%	33%
4	7,948	7,948	4	7,948	7,948	74%	74%	32%
4	7,948	7,948	4	7,948	7,948	68%	68%	31%
4	7,948	7,948	4	7,948	7,948	63%	63%	30%
4	7,948	7,948	4	7,948	7,948	58%	58%	28%
4	7,948	7,948	4	7,948	7,948	53%	53%	27%
4	7,948	7,948	4	7,948	7,948	47%	47%	26%
4	7,948	7,948	4	7,948	7,948	42%	42%	25%
4	7,948	7,948	4	7,948	7,948	37%	37%	23%
4	7,948	7,948	4	7,948	7,948	32%	32%	22%
4	7,948	7,948	4	7,948	7,948	26%	26%	21%
4	7,948	7,948	4	7,948	7,948	21%	21%	20%
4	7,948	7,948	4	7,948	7,948	16%	16%	19%
4	7,948	7,948	4	7,948	7,948	11%	11%	17%
4	7,948	7,948	4	7,948	7,948	5%	5%	16%
4	7,948	7,948	4	7,948	7,948	0%	0%	15%
5	1,737	7,948	5	1,737	7,948	100%	100%	14%
5	1,737	7,948	5	1,737	7,948	91%	91%	12%
5	7,948	7,948	5	7,948	7,948	82%	82%	11%
5	7,948	7,948	5	7,948	7,948	73%	73%	10%
5	7,948	7,948	5	7,948	7,948	64%	64%	9%
5	7,948	7,948	5	7,948	7,948	55%	55%	7%
5	7,948	7,948	5	7,948	7,948	45%	45%	6%
5	7,948	7,948	5	7,948	7,948	36%	36%	5%
5	7,948	7,948	5	7,948	7,948	27%	27%	4%
5	7,948	7,948	5	7,948	7,948	18%	18%	2%
5	7,948	7,948	5	7,948	7,948	9%	9%	1%
5	7,948	7,948	5	7,948	7,948	0%	0%	0%

\_\_\_\_\_

\_\_\_\_\_

\_\_\_\_\_

\_\_\_\_\_

\_\_\_\_\_

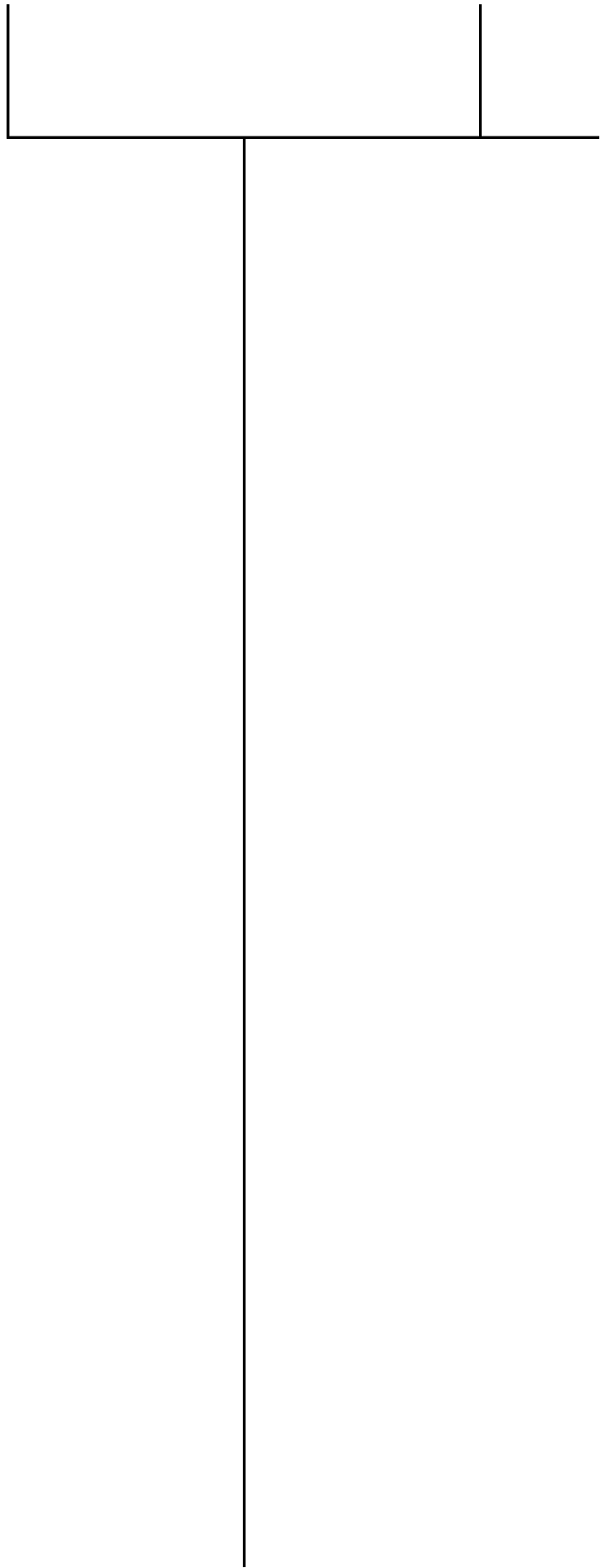
\_\_\_\_\_

\_\_\_\_\_

\_\_\_\_\_

\_\_\_\_\_

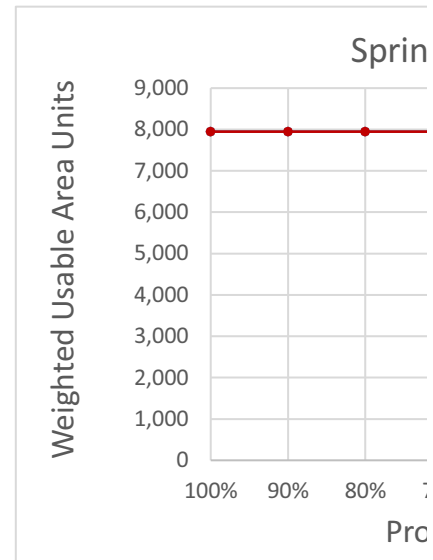
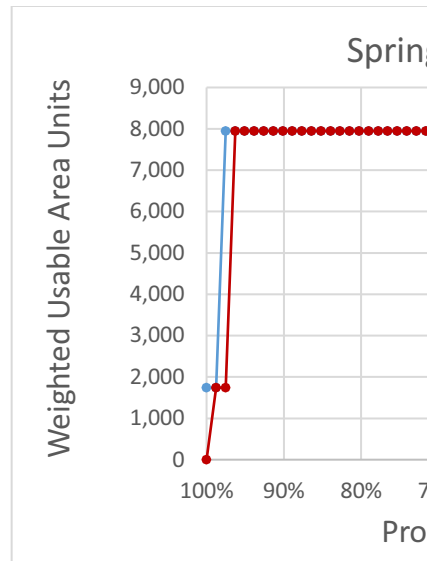
\_\_\_\_\_







All Water Year Types				
Percentage	WUA		Total Sort	
PA20	COS5	PA20	WUA COS	WUA PA
100%	1,737	0	1,737	0
99%	1,737	1,737	1,737	1,737
98%	7,948	1,737	7,948	1,737
96%	7,948	7,948	7,948	7,948
95%	7,948	7,948	7,948	7,948
94%	7,948	7,948	7,948	7,948
93%	7,948	7,948	7,948	7,948
91%	7,948	7,948	7,948	7,948
90%	7,948	7,948	7,948	7,948
89%	7,948	7,948	7,948	7,948
88%	7,948	7,948	7,948	7,948
86%	7,948	7,948	7,948	7,948
85%	7,948	7,948	7,948	7,948
84%	7,948	7,948	7,948	7,948
83%	7,948	7,948	7,948	7,948
81%	7,948	7,948	7,948	7,948
80%	7,948	7,948	7,948	7,948
79%	7,948	7,948	7,948	7,948
78%	7,948	7,948	7,948	7,948
77%	7,948	7,948	7,948	7,948
75%	7,948	7,948	7,948	7,948
74%	7,948	7,948	7,948	7,948
73%	7,948	7,948	7,948	7,948
72%	7,948	7,948	7,948	7,948
70%	7,948	7,948	7,948	7,948
69%	7,948	7,948	7,948	7,948
68%	7,948	7,948	7,948	7,948
67%	7,948	7,948	7,948	7,948
65%	7,948	7,948	7,948	7,948
64%	7,948	7,948	7,948	7,948
63%	7,948	7,948	7,948	7,948
62%	7,948	7,948	7,948	7,948
60%	7,948	7,948	7,948	7,948
59%	7,948	7,948	7,948	7,948
58%	7,948	7,948	7,948	7,948
57%	7,948	7,948	7,948	7,948
56%	7,948	7,948	7,948	7,948
54%	7,948	7,948	7,948	7,948
53%	7,948	7,948	7,948	7,948
52%	7,948	7,948	7,948	7,948
51%	7,948	7,948	7,948	7,948
49%	7,948	7,948	7,948	7,948



48%	7,948	7,948	7,948	7,948
47%	7,948	7,948	7,948	7,948
46%	7,948	7,948	7,948	7,948
44%	7,948	7,948	7,948	7,948
43%	7,948	7,948	7,948	7,948
42%	7,948	7,948	7,948	7,948
41%	7,948	7,948	7,948	7,948
40%	7,948	7,948	7,948	7,948
38%	7,948	7,948	7,948	7,948
37%	7,948	7,948	7,948	7,948
36%	7,948	7,948	7,948	7,948
35%	7,948	7,948	7,948	7,948
33%	7,948	7,948	7,948	7,948
32%	7,948	7,948	7,948	7,948
31%	7,948	7,948	7,948	7,948
30%	7,948	7,948	7,948	7,948
28%	7,948	7,948	7,948	7,948
27%	7,948	7,948	7,948	7,948
26%	7,948	7,948	7,948	7,948
25%	7,948	7,948	7,948	7,948
23%	7,948	7,948	7,948	7,948
22%	7,948	7,948	7,948	7,948
21%	7,948	7,948	7,948	7,948
20%	7,948	7,948	7,948	7,948
19%	7,948	7,948	7,948	7,948
17%	7,948	7,948	7,948	7,948
16%	7,948	7,948	7,948	7,948
15%	7,948	7,948	7,948	7,948
14%	7,948	7,948	7,948	7,948
12%	7,948	7,948	7,948	7,948
11%	7,948	7,948	7,948	7,948
10%	7,948	7,948	7,948	7,948
9%	7,948	7,948	7,948	7,948
7%	7,948	7,948	7,948	7,948
6%	7,948	7,948	7,948	7,948
5%	7,948	7,948	7,948	7,948
4%	7,948	7,948	7,948	7,948
2%	7,948	7,948	7,948	7,948
1%	7,948	7,948	7,948	7,948
0%	7,948	7,948	7,948	7,948



\_\_\_\_\_

\_\_\_\_\_

\_\_\_\_\_

\_\_\_\_\_

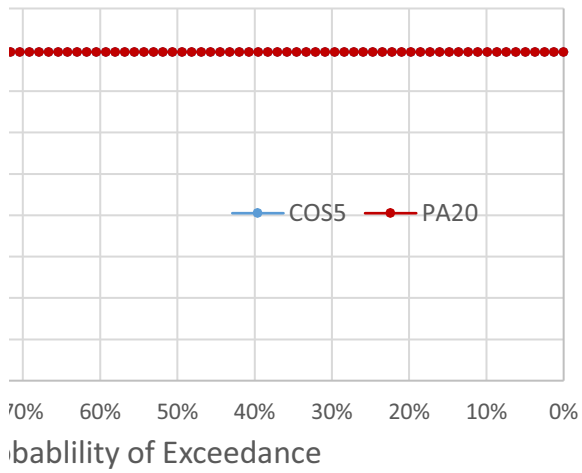
\_\_\_\_\_



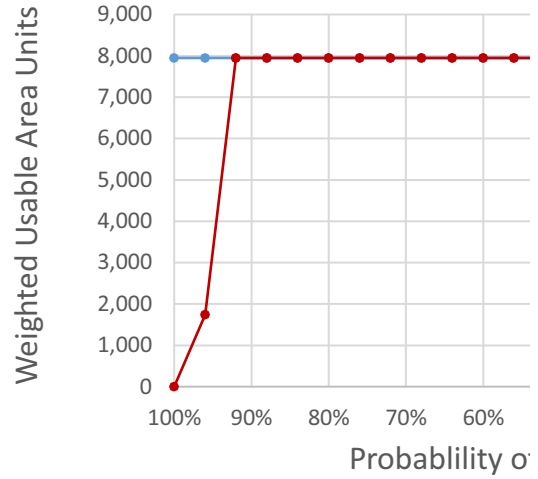




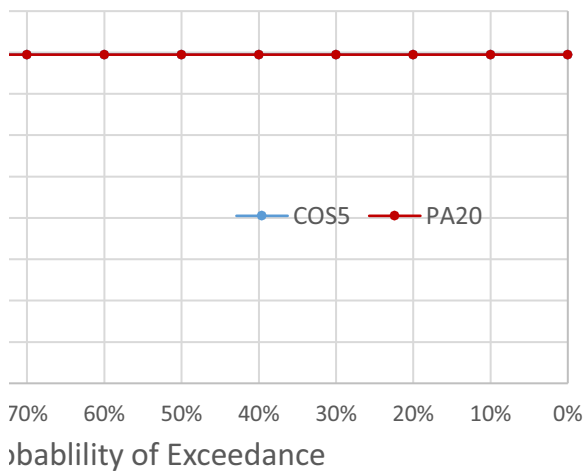
g-run Spawning, All Years



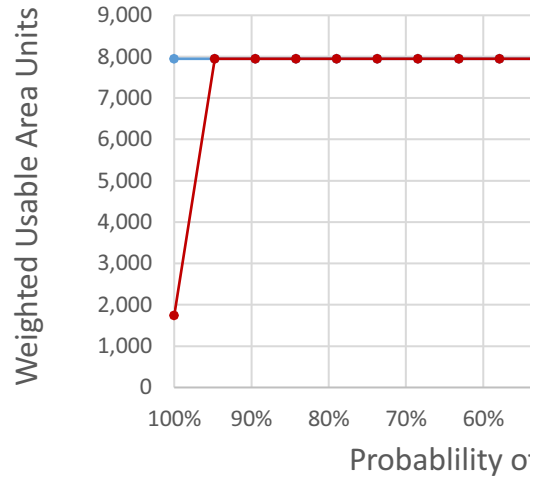
Spring-run Spawning



g-run Spawning, Below Normal Years



Spring-run Spawning













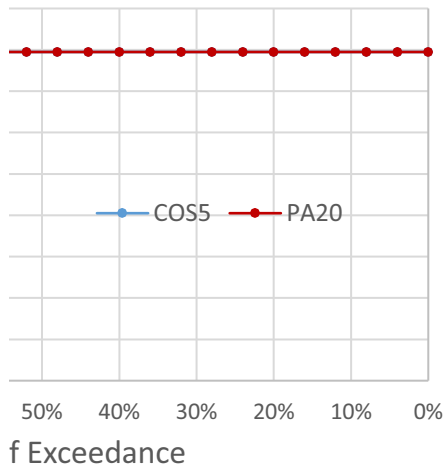




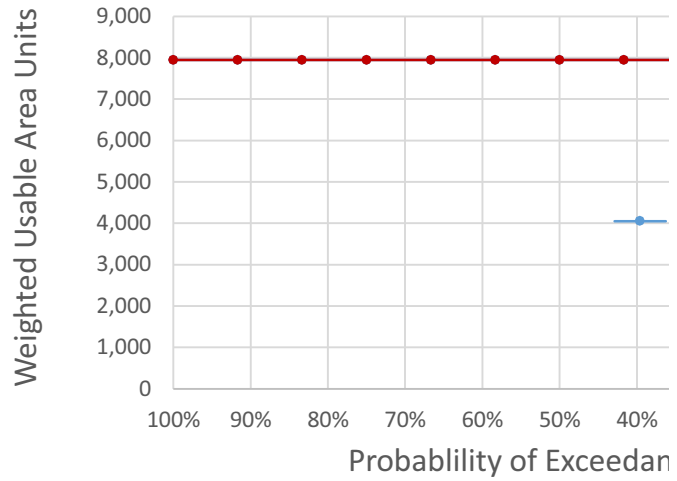




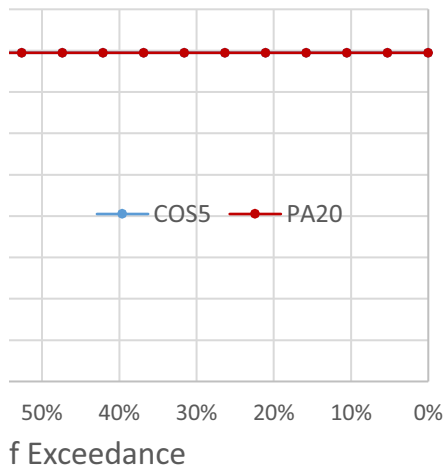
Spawning, Wet Years



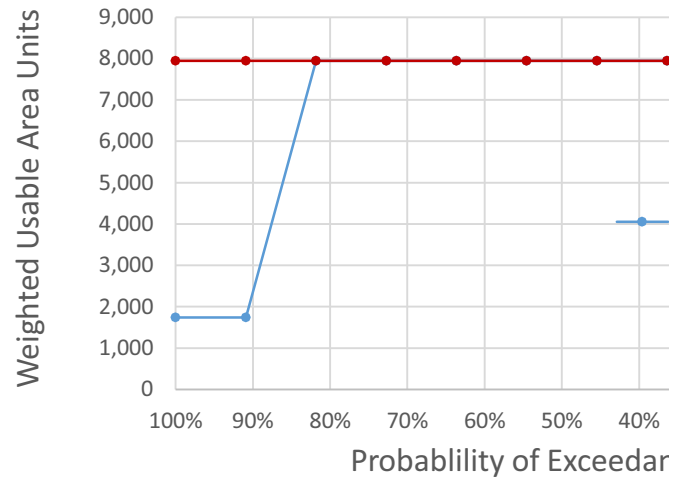
Spring-run Spawning, A



Spawning, Dry Years



Spring-run Spawning, C













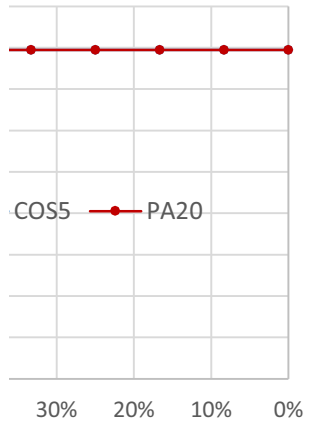






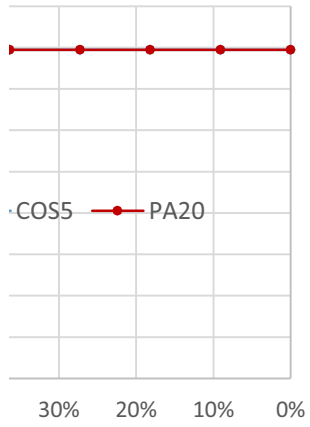


### above Normal Years



ice

### critical Years



ice

|





























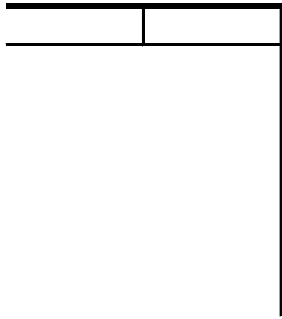












95,078

Sorted by WYT			Water Year Types Separately					
WYT	WUA COS	WUA PA	WYT	WUA		Percentages		Perce
				COS5	PA20	COS5	PA20	COS5
1	57,324	52,317	1	57,324	52,317	100%	100%	100%
1	57,324	52,317	1	57,324	52,317	99%	99%	100%
1	57,324	52,317	1	57,324	52,317	98%	98%	100%
1	87,297	52,317	1	87,297	52,317	98%	98%	99%
1	87,297	52,317	1	87,297	52,317	97%	97%	99%
1	87,297	73,006	1	87,297	73,006	96%	96%	99%
1	87,297	73,006	1	87,297	73,006	95%	95%	99%
1	87,297	73,006	1	87,297	73,006	95%	95%	98%
1	87,297	73,006	1	87,297	73,006	94%	94%	98%
1	87,297	73,006	1	87,297	73,006	93%	93%	98%
1	87,297	73,006	1	87,297	73,006	92%	92%	98%
1	87,297	73,006	1	87,297	73,006	91%	91%	97%
1	87,297	73,006	1	87,297	73,006	91%	91%	97%
1	87,297	73,006	1	87,297	73,006	90%	90%	97%
1	87,297	73,006	1	87,297	73,006	89%	89%	97%
1	87,297	73,006	1	87,297	73,006	88%	88%	96%
1	87,297	73,006	1	87,297	73,006	88%	88%	96%
1	87,297	73,006	1	87,297	73,006	87%	87%	96%
1	87,297	73,006	1	87,297	73,006	86%	86%	96%
1	87,297	73,006	1	87,297	73,006	85%	85%	95%
1	87,297	73,006	1	87,297	73,006	84%	84%	95%
1	87,297	73,006	1	87,297	73,006	84%	84%	95%
1	87,297	73,006	1	87,297	73,006	83%	83%	95%
1	87,297	73,006	1	87,297	73,006	82%	82%	94%
1	87,297	73,006	1	87,297	73,006	81%	81%	94%
1	87,297	73,006	1	87,297	73,006	81%	81%	94%
1	87,297	73,006	1	87,297	73,006	80%	80%	94%
1	87,297	73,006	1	87,297	73,006	79%	79%	93%
1	87,297	73,006	1	87,297	73,006	78%	78%	93%
1	87,297	73,006	1	87,297	73,006	78%	78%	93%
1	87,297	73,006	1	87,297	73,006	77%	77%	93%
1	87,297	73,006	1	87,297	73,006	76%	76%	92%
1	87,297	73,006	1	87,297	73,006	75%	75%	92%
1	87,297	73,006	1	87,297	73,006	74%	74%	92%
1	87,297	73,006	1	87,297	73,006	74%	74%	92%
1	87,297	73,006	1	87,297	73,006	73%	73%	91%
1	87,297	73,006	1	87,297	73,006	72%	72%	91%
1	87,297	73,006	1	87,297	73,006	71%	71%	91%
1	87,297	73,006	1	87,297	73,006	71%	71%	91%
1	87,297	73,006	1	87,297	73,006	70%	70%	90%
1	87,297	73,006	1	87,297	73,006	69%	69%	90%
1	87,297	73,006	1	87,297	73,006	68%	68%	90%
1	87,297	73,006	1	87,297	73,006	67%	67%	90%



1	87,297	73,006	1	87,297	73,006	67%	67%	89%
1	87,297	73,006	1	87,297	73,006	66%	66%	89%
1	87,297	73,006	1	87,297	73,006	65%	65%	89%
1	87,297	73,006	1	87,297	73,006	64%	64%	89%
1	87,297	87,297	1	87,297	87,297	64%	64%	89%
1	87,297	87,297	1	87,297	87,297	63%	63%	88%
1	87,297	87,297	1	87,297	87,297	62%	62%	88%
1	87,297	87,297	1	87,297	87,297	61%	61%	88%
1	87,297	87,297	1	87,297	87,297	60%	60%	88%
1	87,297	87,297	1	87,297	87,297	60%	60%	87%
1	87,297	87,297	1	87,297	87,297	59%	59%	87%
1	87,297	87,297	1	87,297	87,297	58%	58%	87%
1	87,297	87,297	1	87,297	87,297	57%	57%	87%
1	87,297	87,297	1	87,297	87,297	57%	57%	86%
1	87,297	87,297	1	87,297	87,297	56%	56%	86%
1	87,297	87,297	1	87,297	87,297	55%	55%	86%
1	87,297	87,297	1	87,297	87,297	54%	54%	86%
1	87,297	87,297	1	87,297	87,297	53%	53%	85%
1	87,297	87,297	1	87,297	87,297	53%	53%	85%
1	87,297	87,297	1	87,297	87,297	52%	52%	85%
1	87,297	87,297	1	87,297	87,297	51%	51%	85%
1	87,297	87,297	1	87,297	87,297	50%	50%	84%
1	87,297	87,297	1	87,297	87,297	50%	50%	84%
1	87,297	87,297	1	87,297	87,297	49%	49%	84%
1	87,297	87,297	1	87,297	87,297	48%	48%	84%
1	87,297	87,297	1	87,297	87,297	47%	47%	83%
1	87,297	87,297	1	87,297	87,297	47%	47%	83%
1	87,297	87,297	1	87,297	87,297	46%	46%	83%
1	87,297	87,297	1	87,297	87,297	45%	45%	83%
1	87,297	87,297	1	87,297	87,297	44%	44%	82%
1	87,297	87,297	1	87,297	87,297	43%	43%	82%
1	87,297	87,297	1	87,297	87,297	43%	43%	82%
1	87,297	87,297	1	87,297	87,297	42%	42%	82%
1	87,297	87,297	1	87,297	87,297	41%	41%	81%
1	87,297	87,297	1	87,297	87,297	40%	40%	81%
1	87,297	87,297	1	87,297	87,297	40%	40%	81%
1	87,297	87,297	1	87,297	87,297	39%	39%	81%
1	87,297	87,297	1	87,297	87,297	38%	38%	80%
1	87,297	87,297	1	87,297	87,297	37%	37%	80%
1	87,297	87,297	1	87,297	87,297	36%	36%	80%
1	87,297	87,297	1	87,297	87,297	36%	36%	80%
1	87,297	87,297	1	87,297	87,297	35%	35%	79%
1	87,297	87,297	1	87,297	87,297	34%	34%	79%
1	87,297	87,297	1	87,297	87,297	33%	33%	79%
1	87,297	87,297	1	87,297	87,297	33%	33%	79%
1	87,297	87,297	1	87,297	87,297	32%	32%	78%
1	87,297	87,297	1	87,297	87,297	31%	31%	78%

1	87,297	87,297	1	87,297	87,297	30%	30%	78%
1	87,297	87,297	1	87,297	87,297	29%	29%	78%
1	87,297	87,297	1	87,297	87,297	29%	29%	78%
1	87,297	87,297	1	87,297	87,297	28%	28%	77%
1	87,297	87,297	1	87,297	87,297	27%	27%	77%
1	87,297	87,297	1	87,297	87,297	26%	26%	77%
1	87,297	87,297	1	87,297	87,297	26%	26%	77%
1	87,297	87,297	1	87,297	87,297	25%	25%	76%
1	87,297	87,297	1	87,297	87,297	24%	24%	76%
1	87,297	87,297	1	87,297	87,297	23%	23%	76%
1	87,297	87,297	1	87,297	87,297	22%	22%	76%
1	87,297	87,297	1	87,297	87,297	22%	22%	75%
1	87,297	87,297	1	87,297	87,297	21%	21%	75%
1	87,297	87,297	1	87,297	87,297	20%	20%	75%
1	87,297	87,297	1	87,297	87,297	19%	19%	75%
1	87,297	87,297	1	87,297	87,297	19%	19%	74%
1	87,297	87,297	1	87,297	87,297	18%	18%	74%
1	87,297	87,297	1	87,297	87,297	17%	17%	74%
1	87,297	87,297	1	87,297	87,297	16%	16%	74%
1	87,297	87,297	1	87,297	87,297	16%	16%	73%
1	87,297	87,297	1	87,297	87,297	15%	15%	73%
1	87,297	87,297	1	87,297	87,297	14%	14%	73%
1	87,297	87,297	1	87,297	87,297	13%	13%	73%
1	87,297	87,297	1	87,297	87,297	12%	12%	72%
1	87,297	87,297	1	87,297	87,297	12%	12%	72%
1	87,297	87,297	1	87,297	87,297	11%	11%	72%
1	87,297	87,297	1	87,297	87,297	10%	10%	72%
1	87,297	87,297	1	87,297	87,297	9%	9%	71%
1	87,297	87,297	1	87,297	87,297	9%	9%	71%
1	87,297	87,297	1	87,297	87,297	8%	8%	71%
1	87,297	87,297	1	87,297	87,297	7%	7%	71%
1	87,297	87,297	1	87,297	87,297	6%	6%	70%
1	87,297	87,297	1	87,297	87,297	5%	5%	70%
1	87,297	87,297	1	87,297	87,297	5%	5%	70%
1	87,297	87,297	1	87,297	87,297	4%	4%	70%
1	87,297	87,297	1	87,297	87,297	3%	3%	69%
1	87,297	87,297	1	87,297	87,297	2%	2%	69%
1	87,297	88,309	1	87,297	88,309	2%	2%	69%
1	87,297	88,309	1	87,297	88,309	1%	1%	69%
1	95,078	88,309	1	95,078	88,309	0%	0%	68%
2	0	87,297	2	0	87,297	100%	100%	68%
2	73,006	87,297	2	73,006	87,297	98%	98%	68%
2	73,006	87,297	2	73,006	87,297	97%	97%	68%
2	73,006	87,297	2	73,006	87,297	95%	95%	67%
2	73,006	87,297	2	73,006	87,297	94%	94%	67%
2	73,006	87,297	2	73,006	87,297	92%	92%	67%
2	73,006	87,297	2	73,006	87,297	91%	91%	67%

2	73,006	87,297	2	73,006	87,297	89%	89%	67%
2	73,006	87,297	2	73,006	87,297	88%	88%	66%
2	87,297	87,297	2	87,297	87,297	86%	86%	66%
2	87,297	87,297	2	87,297	87,297	84%	84%	66%
2	87,297	87,297	2	87,297	87,297	83%	83%	66%
2	87,297	87,297	2	87,297	87,297	81%	81%	65%
2	87,297	87,297	2	87,297	87,297	80%	80%	65%
2	87,297	87,297	2	87,297	87,297	78%	78%	65%
2	87,297	87,297	2	87,297	87,297	77%	77%	65%
2	87,297	87,297	2	87,297	87,297	75%	75%	64%
2	87,297	87,297	2	87,297	87,297	73%	73%	64%
2	87,297	87,297	2	87,297	87,297	72%	72%	64%
2	87,297	87,297	2	87,297	87,297	70%	70%	64%
2	87,297	87,297	2	87,297	87,297	69%	69%	63%
2	87,297	87,297	2	87,297	87,297	67%	67%	63%
2	87,297	87,297	2	87,297	87,297	66%	66%	63%
2	87,297	87,297	2	87,297	87,297	64%	64%	63%
2	87,297	87,297	2	87,297	87,297	63%	63%	62%
2	87,297	87,297	2	87,297	87,297	61%	61%	62%
2	87,297	87,297	2	87,297	87,297	59%	59%	62%
2	87,297	87,297	2	87,297	87,297	58%	58%	62%
2	87,297	87,297	2	87,297	87,297	56%	56%	61%
2	87,297	87,297	2	87,297	87,297	55%	55%	61%
2	87,297	87,297	2	87,297	87,297	53%	53%	61%
2	87,297	87,297	2	87,297	87,297	52%	52%	61%
2	87,297	87,297	2	87,297	87,297	50%	50%	60%
2	87,297	87,297	2	87,297	87,297	48%	48%	60%
2	87,297	87,297	2	87,297	87,297	47%	47%	60%
2	87,297	87,297	2	87,297	87,297	45%	45%	60%
2	87,297	87,297	2	87,297	87,297	44%	44%	59%
2	87,297	87,297	2	87,297	87,297	42%	42%	59%
2	87,297	87,297	2	87,297	87,297	41%	41%	59%
2	87,297	87,297	2	87,297	87,297	39%	39%	59%
2	87,297	87,297	2	87,297	87,297	38%	38%	58%
2	87,297	87,297	2	87,297	87,297	36%	36%	58%
2	87,297	87,297	2	87,297	87,297	34%	34%	58%
2	87,297	87,297	2	87,297	87,297	33%	33%	58%
2	87,297	87,297	2	87,297	87,297	31%	31%	57%
2	87,297	87,297	2	87,297	87,297	30%	30%	57%
2	87,297	87,297	2	87,297	87,297	28%	28%	57%
2	87,297	87,297	2	87,297	87,297	27%	27%	57%
2	87,297	87,297	2	87,297	87,297	25%	25%	56%
2	87,297	87,297	2	87,297	87,297	23%	23%	56%
2	87,297	87,297	2	87,297	87,297	22%	22%	56%
2	87,297	87,297	2	87,297	87,297	20%	20%	56%
2	87,297	87,297	2	87,297	87,297	19%	19%	56%
2	87,297	87,297	2	87,297	87,297	17%	17%	55%

2	87,297	87,297	2	87,297	87,297	16%	16%	55%
2	87,297	87,297	2	87,297	87,297	14%	14%	55%
2	87,297	87,297	2	87,297	87,297	13%	13%	55%
2	87,297	87,297	2	87,297	87,297	11%	11%	54%
2	87,297	87,297	2	87,297	87,297	9%	9%	54%
2	87,297	87,297	2	87,297	87,297	8%	8%	54%
2	87,297	87,297	2	87,297	87,297	6%	6%	54%
2	87,297	87,297	2	87,297	87,297	5%	5%	53%
2	87,297	87,297	2	87,297	87,297	3%	3%	53%
2	87,297	87,297	2	87,297	87,297	2%	2%	53%
2	87,297	87,297	2	87,297	87,297	0%	0%	53%
3	73,006	57,324	3	73,006	57,324	100%	100%	52%
3	73,006	87,297	3	73,006	87,297	98%	98%	52%
3	73,006	87,297	3	73,006	87,297	96%	96%	52%
3	73,006	87,297	3	73,006	87,297	94%	94%	52%
3	73,006	87,297	3	73,006	87,297	93%	93%	51%
3	87,297	87,297	3	87,297	87,297	91%	91%	51%
3	87,297	87,297	3	87,297	87,297	89%	89%	51%
3	87,297	87,297	3	87,297	87,297	87%	87%	51%
3	87,297	87,297	3	87,297	87,297	85%	85%	50%
3	87,297	87,297	3	87,297	87,297	83%	83%	50%
3	87,297	87,297	3	87,297	87,297	81%	81%	50%
3	87,297	87,297	3	87,297	87,297	80%	80%	50%
3	87,297	87,297	3	87,297	87,297	78%	78%	49%
3	87,297	87,297	3	87,297	87,297	76%	76%	49%
3	87,297	87,297	3	87,297	87,297	74%	74%	49%
3	87,297	87,297	3	87,297	87,297	72%	72%	49%
3	87,297	87,297	3	87,297	87,297	70%	70%	48%
3	87,297	87,297	3	87,297	87,297	69%	69%	48%
3	87,297	87,297	3	87,297	87,297	67%	67%	48%
3	87,297	87,297	3	87,297	87,297	65%	65%	48%
3	87,297	87,297	3	87,297	87,297	63%	63%	47%
3	87,297	87,297	3	87,297	87,297	61%	61%	47%
3	87,297	87,297	3	87,297	87,297	59%	59%	47%
3	87,297	87,297	3	87,297	87,297	57%	57%	47%
3	87,297	87,297	3	87,297	87,297	56%	56%	46%
3	87,297	87,297	3	87,297	87,297	54%	54%	46%
3	87,297	87,297	3	87,297	87,297	52%	52%	46%
3	87,297	87,297	3	87,297	87,297	50%	50%	46%
3	87,297	87,297	3	87,297	87,297	48%	48%	45%
3	87,297	87,297	3	87,297	87,297	46%	46%	45%
3	87,297	87,297	3	87,297	87,297	44%	44%	45%
3	87,297	87,297	3	87,297	87,297	43%	43%	45%
3	87,297	87,297	3	87,297	87,297	41%	41%	44%
3	87,297	87,297	3	87,297	87,297	39%	39%	44%
3	87,297	87,297	3	87,297	87,297	37%	37%	44%
3	87,297	87,297	3	87,297	87,297	35%	35%	44%

3	87,297	87,297	3	87,297	87,297	33%	33%	44%
3	87,297	87,297	3	87,297	87,297	31%	31%	43%
3	87,297	87,297	3	87,297	87,297	30%	30%	43%
3	87,297	87,297	3	87,297	87,297	28%	28%	43%
3	87,297	87,297	3	87,297	87,297	26%	26%	43%
3	87,297	87,297	3	87,297	87,297	24%	24%	42%
3	87,297	87,297	3	87,297	87,297	22%	22%	42%
3	87,297	87,297	3	87,297	87,297	20%	20%	42%
3	87,297	87,297	3	87,297	87,297	19%	19%	42%
3	87,297	87,297	3	87,297	87,297	17%	17%	41%
3	87,297	87,297	3	87,297	87,297	15%	15%	41%
3	87,297	87,297	3	87,297	87,297	13%	13%	41%
3	87,297	87,297	3	87,297	87,297	11%	11%	41%
3	87,297	87,297	3	87,297	87,297	9%	9%	40%
3	87,297	87,722	3	87,297	87,722	7%	7%	40%
3	87,297	87,722	3	87,297	87,722	6%	6%	40%
3	87,297	87,722	3	87,297	87,722	4%	4%	40%
3	87,297	87,722	3	87,297	87,722	2%	2%	39%
3	87,297	87,722	3	87,297	87,722	0%	0%	39%
4	73,006	57,324	4	73,006	57,324	100%	100%	39%
4	73,006	73,006	4	73,006	73,006	99%	99%	39%
4	73,006	73,006	4	73,006	73,006	98%	98%	38%
4	73,006	73,006	4	73,006	73,006	97%	97%	38%
4	73,006	73,006	4	73,006	73,006	96%	96%	38%
4	73,006	73,006	4	73,006	73,006	95%	95%	38%
4	73,006	73,006	4	73,006	73,006	94%	94%	37%
4	73,006	73,006	4	73,006	73,006	93%	93%	37%
4	73,006	73,006	4	73,006	73,006	92%	92%	37%
4	73,006	73,006	4	73,006	73,006	91%	91%	37%
4	73,006	73,006	4	73,006	73,006	90%	90%	36%
4	73,006	73,006	4	73,006	73,006	89%	89%	36%
4	73,006	73,006	4	73,006	73,006	88%	88%	36%
4	73,006	87,297	4	73,006	87,297	87%	87%	36%
4	73,006	87,297	4	73,006	87,297	86%	86%	35%
4	73,006	87,297	4	73,006	87,297	85%	85%	35%
4	73,006	87,297	4	73,006	87,297	84%	84%	35%
4	73,006	87,297	4	73,006	87,297	83%	83%	35%
4	73,006	87,297	4	73,006	87,297	82%	82%	34%
4	73,006	87,297	4	73,006	87,297	81%	81%	34%
4	73,006	87,297	4	73,006	87,297	80%	80%	34%
4	87,297	87,297	4	87,297	87,297	79%	79%	34%
4	87,297	87,297	4	87,297	87,297	78%	78%	33%
4	87,297	87,297	4	87,297	87,297	77%	77%	33%
4	87,297	87,297	4	87,297	87,297	76%	76%	33%
4	87,297	87,297	4	87,297	87,297	75%	75%	33%
4	87,297	87,297	4	87,297	87,297	74%	74%	33%
4	87,297	87,297	4	87,297	87,297	73%	73%	32%

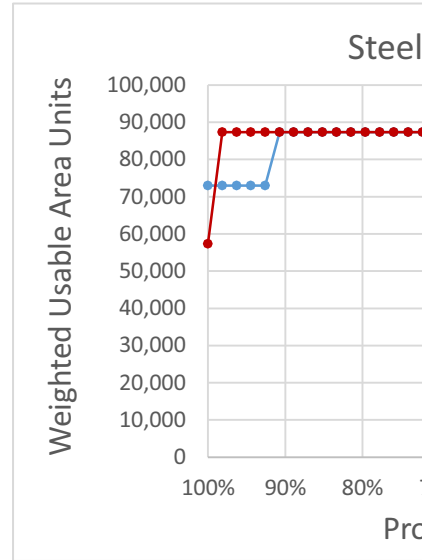
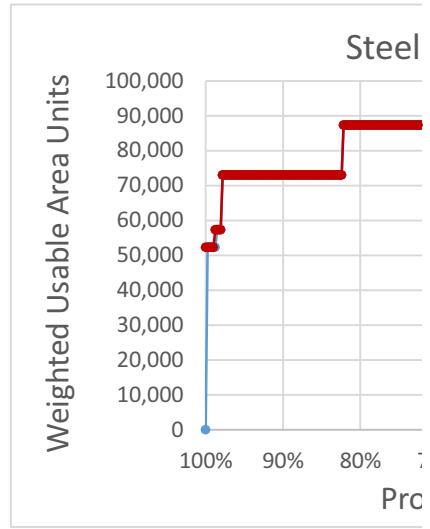
4	87,297	87,297	4	87,297	87,297	72%	72%	32%
4	87,297	87,297	4	87,297	87,297	71%	71%	32%
4	87,297	87,297	4	87,297	87,297	70%	70%	32%
4	87,297	87,297	4	87,297	87,297	69%	69%	31%
4	87,297	87,297	4	87,297	87,297	68%	68%	31%
4	87,297	87,297	4	87,297	87,297	67%	67%	31%
4	87,297	87,297	4	87,297	87,297	66%	66%	31%
4	87,297	87,297	4	87,297	87,297	65%	65%	30%
4	87,297	87,297	4	87,297	87,297	64%	64%	30%
4	87,297	87,297	4	87,297	87,297	63%	63%	30%
4	87,297	87,297	4	87,297	87,297	62%	62%	30%
4	87,297	87,297	4	87,297	87,297	61%	61%	29%
4	87,297	87,297	4	87,297	87,297	60%	60%	29%
4	87,297	87,297	4	87,297	87,297	59%	59%	29%
4	87,297	87,297	4	87,297	87,297	58%	58%	29%
4	87,297	87,297	4	87,297	87,297	57%	57%	28%
4	87,297	87,297	4	87,297	87,297	56%	56%	28%
4	87,297	87,297	4	87,297	87,297	55%	55%	28%
4	87,297	87,297	4	87,297	87,297	54%	54%	28%
4	87,297	87,297	4	87,297	87,297	53%	53%	27%
4	87,297	87,297	4	87,297	87,297	52%	52%	27%
4	87,297	87,297	4	87,297	87,297	51%	51%	27%
4	87,297	87,297	4	87,297	87,297	49%	49%	27%
4	87,297	87,297	4	87,297	87,297	48%	48%	26%
4	87,297	87,297	4	87,297	87,297	47%	47%	26%
4	87,297	87,297	4	87,297	87,297	46%	46%	26%
4	87,297	87,297	4	87,297	87,297	45%	45%	26%
4	87,297	87,297	4	87,297	87,297	44%	44%	25%
4	87,297	87,297	4	87,297	87,297	43%	43%	25%
4	87,297	87,297	4	87,297	87,297	42%	42%	25%
4	87,297	87,297	4	87,297	87,297	41%	41%	25%
4	87,297	87,297	4	87,297	87,297	40%	40%	24%
4	87,297	87,297	4	87,297	87,297	39%	39%	24%
4	87,297	87,297	4	87,297	87,297	38%	38%	24%
4	87,297	87,297	4	87,297	87,297	37%	37%	24%
4	87,297	87,297	4	87,297	87,297	36%	36%	23%
4	87,297	87,297	4	87,297	87,297	35%	35%	23%
4	87,297	87,297	4	87,297	87,297	34%	34%	23%
4	87,297	87,297	4	87,297	87,297	33%	33%	23%
4	87,297	87,297	4	87,297	87,297	32%	32%	22%
4	87,297	87,297	4	87,297	87,297	31%	31%	22%
4	87,297	87,297	4	87,297	87,297	30%	30%	22%
4	87,297	87,297	4	87,297	87,297	29%	29%	22%
4	87,297	87,297	4	87,297	87,297	28%	28%	22%
4	87,297	87,297	4	87,297	87,297	27%	27%	21%
4	87,297	87,297	4	87,297	87,297	26%	26%	21%
4	87,297	87,297	4	87,297	87,297	25%	25%	21%

4	87,297	87,297	4	87,297	87,297	24%	24%	21%
4	87,297	87,297	4	87,297	87,297	23%	23%	20%
4	87,297	87,297	4	87,297	87,297	22%	22%	20%
4	87,297	87,297	4	87,297	87,297	21%	21%	20%
4	87,297	87,297	4	87,297	87,297	20%	20%	20%
4	87,297	87,297	4	87,297	87,297	19%	19%	19%
4	87,297	87,297	4	87,297	87,297	18%	18%	19%
4	87,297	87,297	4	87,297	87,297	17%	17%	19%
4	87,297	87,297	4	87,297	87,297	16%	16%	19%
4	87,297	87,297	4	87,297	87,297	15%	15%	18%
4	87,297	87,297	4	87,297	87,297	14%	14%	18%
4	87,297	87,297	4	87,297	87,297	13%	13%	18%
4	87,297	87,297	4	87,297	87,297	12%	12%	18%
4	87,297	87,297	4	87,297	87,297	11%	11%	17%
4	87,297	87,297	4	87,297	87,297	10%	10%	17%
4	87,297	87,297	4	87,297	87,297	9%	9%	17%
4	87,297	87,297	4	87,297	87,297	8%	8%	17%
4	87,297	87,297	4	87,297	87,297	7%	7%	16%
4	87,297	87,297	4	87,297	87,297	6%	6%	16%
4	87,297	87,297	4	87,297	87,297	5%	5%	16%
4	87,297	87,297	4	87,297	87,297	4%	4%	16%
4	87,297	87,297	4	87,297	87,297	3%	3%	15%
4	87,297	87,297	4	87,297	87,297	2%	2%	15%
4	87,297	87,297	4	87,297	87,297	1%	1%	15%
4	87,297	95,078	4	87,297	95,078	0%	0%	15%
5	52,317	57,324	5	52,317	57,324	100%	100%	14%
5	52,317	57,324	5	52,317	57,324	98%	98%	14%
5	52,317	73,006	5	52,317	73,006	97%	97%	14%
5	52,317	73,006	5	52,317	73,006	95%	95%	14%
5	52,317	73,006	5	52,317	73,006	93%	93%	13%
5	73,006	73,006	5	73,006	73,006	92%	92%	13%
5	73,006	73,006	5	73,006	73,006	90%	90%	13%
5	73,006	73,006	5	73,006	73,006	88%	88%	13%
5	73,006	73,006	5	73,006	73,006	86%	86%	12%
5	73,006	73,006	5	73,006	73,006	85%	85%	12%
5	73,006	73,006	5	73,006	73,006	83%	83%	12%
5	73,006	73,006	5	73,006	73,006	81%	81%	12%
5	73,006	87,297	5	73,006	87,297	80%	80%	11%
5	73,006	87,297	5	73,006	87,297	78%	78%	11%
5	73,006	87,297	5	73,006	87,297	76%	76%	11%
5	73,006	87,297	5	73,006	87,297	75%	75%	11%
5	73,006	87,297	5	73,006	87,297	73%	73%	11%
5	73,006	87,297	5	73,006	87,297	71%	71%	10%
5	73,006	87,297	5	73,006	87,297	69%	69%	10%
5	73,006	87,297	5	73,006	87,297	68%	68%	10%
5	73,006	87,297	5	73,006	87,297	66%	66%	10%
5	73,006	87,297	5	73,006	87,297	64%	64%	9%

5	73,006	87,297	5	73,006	87,297	63%	63%	9%
5	73,006	87,297	5	73,006	87,297	61%	61%	9%
5	73,006	87,297	5	73,006	87,297	59%	59%	9%
5	73,006	87,297	5	73,006	87,297	58%	58%	8%
5	73,006	87,297	5	73,006	87,297	56%	56%	8%
5	73,006	87,297	5	73,006	87,297	54%	54%	8%
5	73,006	87,297	5	73,006	87,297	53%	53%	8%
5	73,006	87,297	5	73,006	87,297	51%	51%	7%
5	73,006	87,297	5	73,006	87,297	49%	49%	7%
5	73,006	87,297	5	73,006	87,297	47%	47%	7%
5	73,006	87,297	5	73,006	87,297	46%	46%	7%
5	73,006	87,297	5	73,006	87,297	44%	44%	6%
5	73,006	87,297	5	73,006	87,297	42%	42%	6%
5	87,297	87,297	5	87,297	87,297	41%	41%	6%
5	87,297	87,297	5	87,297	87,297	39%	39%	6%
5	87,297	87,297	5	87,297	87,297	37%	37%	5%
5	87,297	87,297	5	87,297	87,297	36%	36%	5%
5	87,297	87,297	5	87,297	87,297	34%	34%	5%
5	87,297	87,297	5	87,297	87,297	32%	32%	5%
5	87,297	87,297	5	87,297	87,297	31%	31%	4%
5	87,297	87,297	5	87,297	87,297	29%	29%	4%
5	87,297	87,297	5	87,297	87,297	27%	27%	4%
5	87,297	87,297	5	87,297	87,297	25%	25%	4%
5	87,297	87,297	5	87,297	87,297	24%	24%	3%
5	87,297	87,297	5	87,297	87,297	22%	22%	3%
5	87,297	87,297	5	87,297	87,297	20%	20%	3%
5	87,297	87,297	5	87,297	87,297	19%	19%	3%
5	87,297	87,297	5	87,297	87,297	17%	17%	2%
5	87,297	87,297	5	87,297	87,297	15%	15%	2%
5	87,297	87,297	5	87,297	87,297	14%	14%	2%
5	87,297	87,297	5	87,297	87,297	12%	12%	2%
5	87,297	87,297	5	87,297	87,297	10%	10%	1%
5	87,297	87,297	5	87,297	87,297	8%	8%	1%
5	87,297	87,297	5	87,297	87,297	7%	7%	1%
5	87,297	87,297	5	87,297	87,297	5%	5%	1%
5	87,297	87,297	5	87,297	87,297	3%	3%	0%
5	87,297	87,297	5	87,297	87,297	2%	2%	0%
5	87,297	87,297	5	87,297	87,297	0%	0%	0%



All Water Year Types				
Stages	WUA		Sorted by WYT	
PA20	COS5	PA20	WUA COS	WUA PA
100%	0	52,317	0	52,317
100%	52,317	52,317	52,317	52,317
100%	52,317	52,317	52,317	52,317
99%	52,317	52,317	52,317	52,317
99%	52,317	52,317	52,317	52,317
99%	52,317	57,324	52,317	57,324
99%	57,324	57,324	57,324	57,324
98%	57,324	57,324	57,324	57,324
98%	57,324	57,324	57,324	57,324
98%	73,006	73,006	73,006	73,006
98%	73,006	73,006	73,006	73,006
97%	73,006	73,006	73,006	73,006
97%	73,006	73,006	73,006	73,006
97%	73,006	73,006	73,006	73,006
97%	73,006	73,006	73,006	73,006
96%	73,006	73,006	73,006	73,006
96%	73,006	73,006	73,006	73,006
96%	73,006	73,006	73,006	73,006
96%	73,006	73,006	73,006	73,006
95%	73,006	73,006	73,006	73,006
95%	73,006	73,006	73,006	73,006
95%	73,006	73,006	73,006	73,006
95%	73,006	73,006	73,006	73,006
94%	73,006	73,006	73,006	73,006
94%	73,006	73,006	73,006	73,006
94%	73,006	73,006	73,006	73,006
94%	73,006	73,006	73,006	73,006
93%	73,006	73,006	73,006	73,006
93%	73,006	73,006	73,006	73,006
93%	73,006	73,006	73,006	73,006
92%	73,006	73,006	73,006	73,006
92%	73,006	73,006	73,006	73,006
92%	73,006	73,006	73,006	73,006
92%	73,006	73,006	73,006	73,006
91%	73,006	73,006	73,006	73,006
91%	73,006	73,006	73,006	73,006
91%	73,006	73,006	73,006	73,006
91%	73,006	73,006	73,006	73,006
90%	73,006	73,006	73,006	73,006
90%	73,006	73,006	73,006	73,006
90%	73,006	73,006	73,006	73,006
90%	73,006	73,006	73,006	73,006













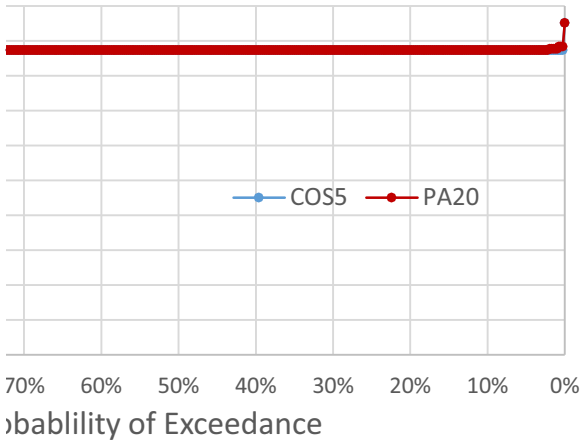




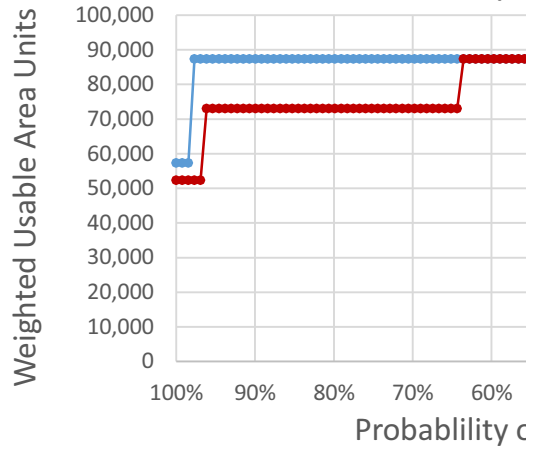


9%	87,297	87,297	87,297	87,297
9%	87,297	87,297	87,297	87,297
9%	87,297	87,297	87,297	87,297
8%	87,297	87,297	87,297	87,297
8%	87,297	87,297	87,297	87,297
8%	87,297	87,297	87,297	87,297
8%	87,297	87,297	87,297	87,297
7%	87,297	87,297	87,297	87,297
7%	87,297	87,297	87,297	87,297
7%	87,297	87,297	87,297	87,297
7%	87,297	87,297	87,297	87,297
6%	87,297	87,297	87,297	87,297
6%	87,297	87,297	87,297	87,297
6%	87,297	87,297	87,297	87,297
6%	87,297	87,297	87,297	87,297
5%	87,297	87,297	87,297	87,297
5%	87,297	87,297	87,297	87,297
5%	87,297	87,297	87,297	87,297
5%	87,297	87,297	87,297	87,297
4%	87,297	87,297	87,297	87,297
4%	87,297	87,297	87,297	87,297
4%	87,297	87,297	87,297	87,297
4%	87,297	87,297	87,297	87,297
3%	87,297	87,297	87,297	87,297
3%	87,297	87,297	87,297	87,297
3%	87,297	87,297	87,297	87,297
3%	87,297	87,297	87,297	87,297
2%	87,297	87,297	87,297	87,297
2%	87,297	87,297	87,297	87,297
2%	87,297	87,722	87,297	87,722
2%	87,297	87,722	87,297	87,722
1%	87,297	87,722	87,297	87,722
1%	87,297	87,722	87,297	87,722
1%	87,297	87,722	87,297	87,722
1%	87,297	88,309	87,297	88,309
0%	87,297	88,309	87,297	88,309
0%	87,297	88,309	87,297	88,309
0%	95,078	95,078	95,078	95,078

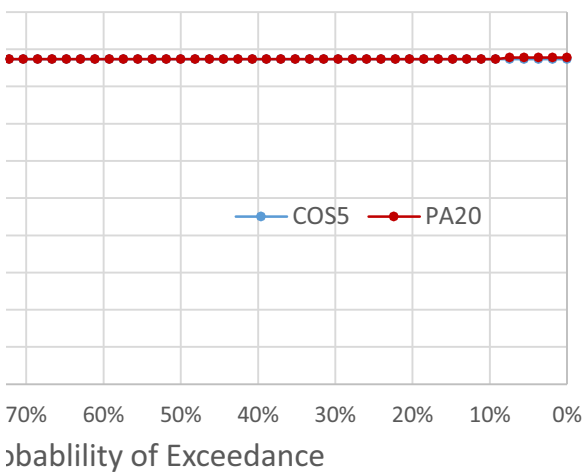
head Spawning, All Years



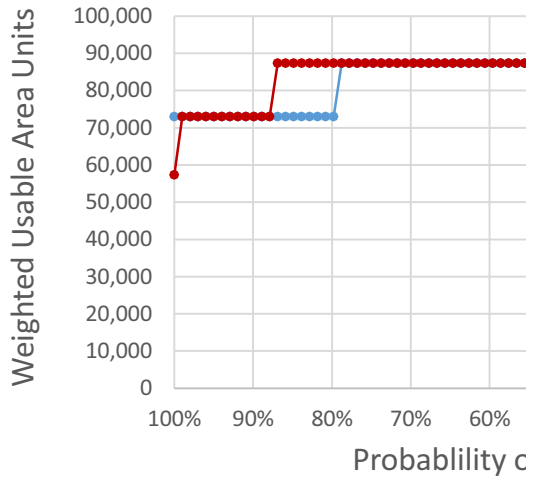
Steelhead Spa



head Spawning, Below Normal Years



Steelhead Spa













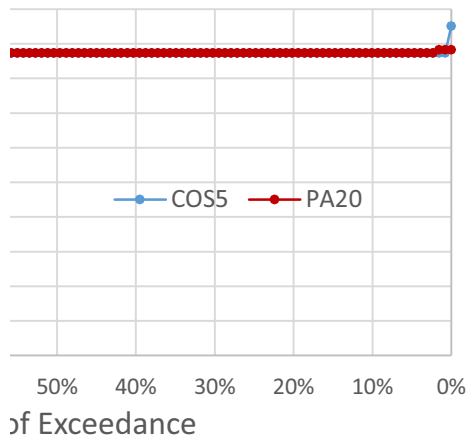




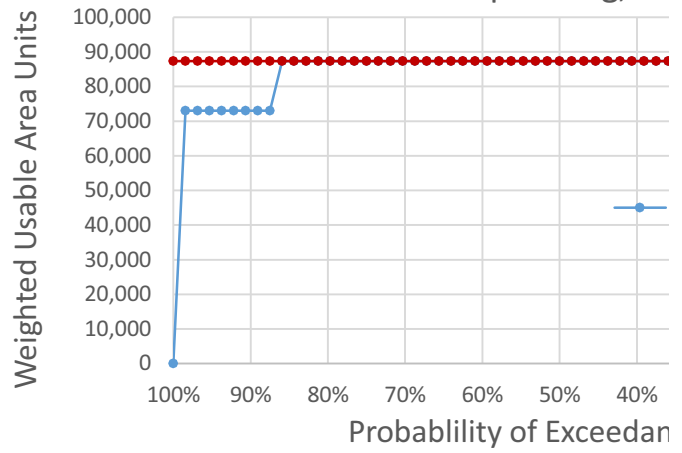




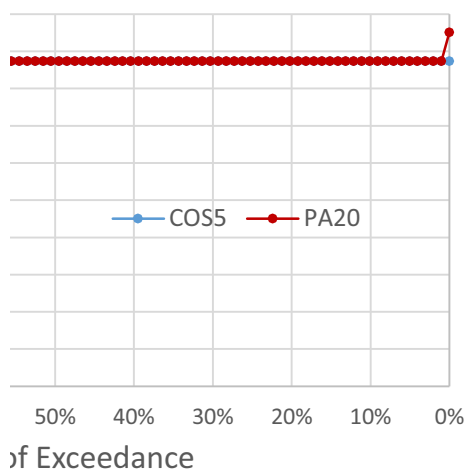
Spawning, Wet Years



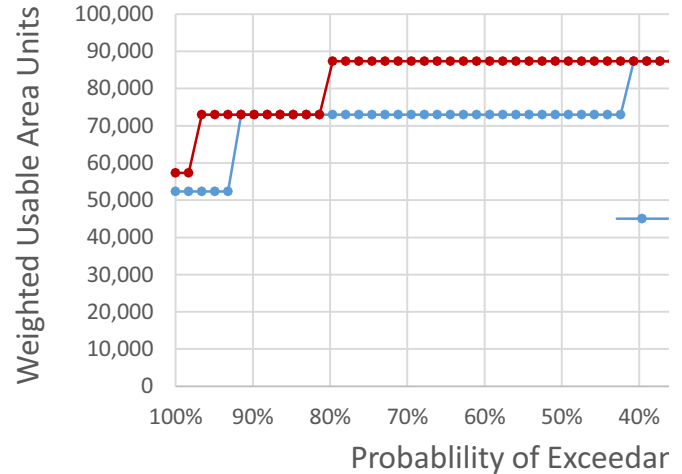
Steelhead Spawning, Ak



Spawning, Dry Years



Steelhead Spawning, Cr













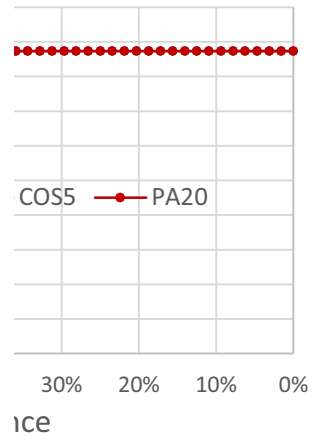




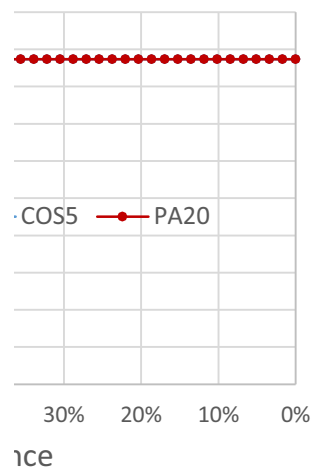




### Above Normal Years



### Critical Years



510,275

Sorted by WYT			Water Year Types Separately					
WYT	WUA COS	WUA PA	WYT	WUA		Percentages		Perce
				COS5	PA20	COS5	PA20	COS5
1	318,856	0	1	318,856	0	100%	100%	100%
1	318,856	301,646	1	318,856	301,646	99%	99%	100%
1	318,856	302,878	1	318,856	302,878	98%	98%	100%
1	318,856	302,878	1	318,856	302,878	98%	98%	99%
1	318,856	302,878	1	318,856	302,878	97%	97%	99%
1	318,856	302,878	1	318,856	302,878	96%	96%	99%
1	318,856	302,878	1	318,856	302,878	95%	95%	99%
1	318,856	310,298	1	318,856	310,298	95%	95%	98%
1	318,856	310,298	1	318,856	310,298	94%	94%	98%
1	318,856	310,298	1	318,856	310,298	93%	93%	98%
1	318,856	310,298	1	318,856	310,298	92%	92%	98%
1	318,856	310,298	1	318,856	310,298	91%	91%	97%
1	318,856	310,298	1	318,856	310,298	91%	91%	97%
1	318,856	310,298	1	318,856	310,298	90%	90%	97%
1	318,856	310,298	1	318,856	310,298	89%	89%	97%
1	318,856	310,298	1	318,856	310,298	88%	88%	96%
1	318,856	310,298	1	318,856	310,298	88%	88%	96%
1	318,856	310,298	1	318,856	310,298	87%	87%	96%
1	318,856	310,298	1	318,856	310,298	86%	86%	96%
1	318,856	310,298	1	318,856	310,298	85%	85%	95%
1	318,856	310,298	1	318,856	310,298	84%	84%	95%
1	318,856	310,298	1	318,856	310,298	84%	84%	95%
1	318,856	310,298	1	318,856	310,298	83%	83%	95%
1	318,856	310,298	1	318,856	310,298	82%	82%	94%
1	318,856	310,298	1	318,856	310,298	81%	81%	94%
1	318,856	310,298	1	318,856	310,298	81%	81%	94%
1	318,856	310,298	1	318,856	310,298	80%	80%	94%
1	318,856	310,298	1	318,856	310,298	79%	79%	93%
1	318,856	310,298	1	318,856	310,298	78%	78%	93%
1	318,856	310,298	1	318,856	310,298	78%	78%	93%
1	318,856	310,298	1	318,856	310,298	77%	77%	93%
1	318,856	310,298	1	318,856	310,298	76%	76%	92%
1	318,856	310,298	1	318,856	310,298	75%	75%	92%
1	318,856	310,298	1	318,856	310,298	74%	74%	92%
1	318,856	310,298	1	318,856	310,298	74%	74%	92%
1	318,856	310,298	1	318,856	310,298	73%	73%	91%
1	318,856	310,298	1	318,856	310,298	72%	72%	91%
1	318,856	310,298	1	318,856	310,298	71%	71%	91%
1	318,856	310,298	1	318,856	310,298	71%	71%	91%
1	318,856	310,298	1	318,856	310,298	70%	70%	90%
1	318,856	310,298	1	318,856	310,298	69%	69%	90%
1	318,856	310,298	1	318,856	310,298	68%	68%	90%
1	318,856	310,298	1	318,856	310,298	67%	67%	90%

1	318,856	310,298	1	318,856	310,298	67%	67%	89%
1	318,856	310,298	1	318,856	310,298	66%	66%	89%
1	318,856	310,298	1	318,856	310,298	65%	65%	89%
1	318,856	310,298	1	318,856	310,298	64%	64%	89%
1	318,856	310,298	1	318,856	310,298	64%	64%	89%
1	318,856	310,298	1	318,856	310,298	63%	63%	88%
1	318,856	318,856	1	318,856	318,856	62%	62%	88%
1	318,856	318,856	1	318,856	318,856	61%	61%	88%
1	318,856	318,856	1	318,856	318,856	60%	60%	88%
1	318,856	318,856	1	318,856	318,856	60%	60%	87%
1	318,856	318,856	1	318,856	318,856	59%	59%	87%
1	318,856	318,856	1	318,856	318,856	58%	58%	87%
1	318,856	318,856	1	318,856	318,856	57%	57%	87%
1	318,856	318,856	1	318,856	318,856	57%	57%	86%
1	318,856	318,856	1	318,856	318,856	56%	56%	86%
1	318,856	318,856	1	318,856	318,856	55%	55%	86%
1	318,856	318,856	1	318,856	318,856	54%	54%	86%
1	318,856	318,856	1	318,856	318,856	53%	53%	85%
1	318,856	318,856	1	318,856	318,856	53%	53%	85%
1	318,856	318,856	1	318,856	318,856	52%	52%	85%
1	318,856	318,856	1	318,856	318,856	51%	51%	85%
1	318,856	318,856	1	318,856	318,856	50%	50%	84%
1	318,856	318,856	1	318,856	318,856	50%	50%	84%
1	318,856	318,856	1	318,856	318,856	49%	49%	84%
1	318,856	318,856	1	318,856	318,856	48%	48%	84%
1	318,856	318,856	1	318,856	318,856	47%	47%	83%
1	318,856	318,856	1	318,856	318,856	47%	47%	83%
1	318,856	318,856	1	318,856	318,856	46%	46%	83%
1	318,856	318,856	1	318,856	318,856	45%	45%	83%
1	318,856	318,856	1	318,856	318,856	44%	44%	82%
1	318,856	318,856	1	318,856	318,856	43%	43%	82%
1	318,856	318,856	1	318,856	318,856	43%	43%	82%
1	318,856	318,856	1	318,856	318,856	42%	42%	82%
1	318,856	318,856	1	318,856	318,856	41%	41%	81%
1	318,856	318,856	1	318,856	318,856	40%	40%	81%
1	318,856	318,856	1	318,856	318,856	40%	40%	81%
1	318,856	318,856	1	318,856	318,856	39%	39%	81%
1	318,856	318,856	1	318,856	318,856	38%	38%	80%
1	318,856	318,856	1	318,856	318,856	37%	37%	80%
1	318,856	318,856	1	318,856	318,856	36%	36%	80%
1	318,856	318,856	1	318,856	318,856	36%	36%	80%
1	318,856	318,856	1	318,856	318,856	35%	35%	79%
1	318,856	318,856	1	318,856	318,856	34%	34%	79%
1	318,856	318,856	1	318,856	318,856	33%	33%	79%
1	318,856	318,856	1	318,856	318,856	33%	33%	79%
1	318,856	318,856	1	318,856	318,856	32%	32%	78%
1	318,856	318,856	1	318,856	318,856	31%	31%	78%

1	318,856	318,856	1	318,856	318,856	30%	30%	78%
1	318,856	318,856	1	318,856	318,856	29%	29%	78%
1	318,856	318,856	1	318,856	318,856	29%	29%	78%
1	318,856	318,856	1	318,856	318,856	28%	28%	77%
1	318,856	318,856	1	318,856	318,856	27%	27%	77%
1	318,856	318,856	1	318,856	318,856	26%	26%	77%
1	318,856	318,856	1	318,856	318,856	26%	26%	77%
1	318,856	318,856	1	318,856	318,856	25%	25%	76%
1	318,856	318,856	1	318,856	318,856	24%	24%	76%
1	318,856	318,856	1	318,856	318,856	23%	23%	76%
1	318,856	318,856	1	318,856	318,856	22%	22%	76%
1	318,856	318,856	1	318,856	318,856	22%	22%	75%
1	318,856	318,856	1	318,856	318,856	21%	21%	75%
1	318,856	318,856	1	318,856	318,856	20%	20%	75%
1	318,856	318,856	1	318,856	318,856	19%	19%	75%
1	318,856	318,856	1	318,856	318,856	19%	19%	74%
1	318,856	318,856	1	318,856	318,856	18%	18%	74%
1	318,856	318,856	1	318,856	318,856	17%	17%	74%
1	318,856	318,856	1	318,856	318,856	16%	16%	74%
1	318,856	318,856	1	318,856	318,856	16%	16%	73%
1	318,856	318,856	1	318,856	318,856	15%	15%	73%
1	318,856	318,856	1	318,856	318,856	14%	14%	73%
1	318,856	318,856	1	318,856	318,856	13%	13%	73%
1	318,856	318,856	1	318,856	318,856	12%	12%	72%
1	318,856	318,856	1	318,856	318,856	12%	12%	72%
1	318,856	318,856	1	318,856	318,856	11%	11%	72%
1	318,856	318,856	1	318,856	318,856	10%	10%	72%
1	318,856	318,856	1	318,856	318,856	9%	9%	71%
1	318,856	318,856	1	318,856	318,856	9%	9%	71%
1	318,856	318,856	1	318,856	318,856	8%	8%	71%
1	318,856	318,856	1	318,856	318,856	7%	7%	71%
1	318,856	318,856	1	318,856	318,856	6%	6%	70%
1	318,856	318,856	1	318,856	318,856	5%	5%	70%
1	318,856	318,856	1	318,856	318,856	5%	5%	70%
1	318,856	318,856	1	318,856	318,856	4%	4%	70%
1	318,856	318,856	1	318,856	318,856	3%	3%	69%
1	384,941	318,856	1	384,941	318,856	2%	2%	69%
1	510,275	318,856	1	510,275	318,856	2%	2%	69%
1	510,275	321,766	1	510,275	321,766	1%	1%	69%
1	510,275	321,766	1	510,275	321,766	0%	0%	68%
2	0	318,856	2	0	318,856	100%	100%	68%
2	301,646	318,856	2	301,646	318,856	98%	98%	68%
2	310,298	318,856	2	310,298	318,856	97%	97%	68%
2	310,298	318,856	2	310,298	318,856	95%	95%	67%
2	310,298	318,856	2	310,298	318,856	94%	94%	67%
2	310,298	318,856	2	310,298	318,856	92%	92%	67%
2	310,298	318,856	2	310,298	318,856	91%	91%	67%

2	310,298	318,856	2	310,298	318,856	89%	89%	67%
2	310,298	318,856	2	310,298	318,856	88%	88%	66%
2	310,298	318,856	2	310,298	318,856	86%	86%	66%
2	310,298	318,856	2	310,298	318,856	84%	84%	66%
2	318,856	318,856	2	318,856	318,856	83%	83%	66%
2	318,856	318,856	2	318,856	318,856	81%	81%	65%
2	318,856	318,856	2	318,856	318,856	80%	80%	65%
2	318,856	318,856	2	318,856	318,856	78%	78%	65%
2	318,856	318,856	2	318,856	318,856	77%	77%	65%
2	318,856	318,856	2	318,856	318,856	75%	75%	64%
2	318,856	318,856	2	318,856	318,856	73%	73%	64%
2	318,856	318,856	2	318,856	318,856	72%	72%	64%
2	318,856	318,856	2	318,856	318,856	70%	70%	64%
2	318,856	318,856	2	318,856	318,856	69%	69%	63%
2	318,856	318,856	2	318,856	318,856	67%	67%	63%
2	318,856	318,856	2	318,856	318,856	66%	66%	63%
2	318,856	318,856	2	318,856	318,856	64%	64%	63%
2	318,856	318,856	2	318,856	318,856	63%	63%	62%
2	318,856	318,856	2	318,856	318,856	61%	61%	62%
2	318,856	318,856	2	318,856	318,856	59%	59%	62%
2	318,856	318,856	2	318,856	318,856	58%	58%	62%
2	318,856	318,856	2	318,856	318,856	56%	56%	61%
2	318,856	318,856	2	318,856	318,856	55%	55%	61%
2	318,856	318,856	2	318,856	318,856	53%	53%	61%
2	318,856	318,856	2	318,856	318,856	52%	52%	61%
2	318,856	318,856	2	318,856	318,856	50%	50%	60%
2	318,856	318,856	2	318,856	318,856	48%	48%	60%
2	318,856	318,856	2	318,856	318,856	47%	47%	60%
2	318,856	318,856	2	318,856	318,856	45%	45%	60%
2	318,856	318,856	2	318,856	318,856	44%	44%	59%
2	318,856	318,856	2	318,856	318,856	42%	42%	59%
2	318,856	318,856	2	318,856	318,856	41%	41%	59%
2	318,856	318,856	2	318,856	318,856	39%	39%	59%
2	318,856	318,856	2	318,856	318,856	38%	38%	58%
2	318,856	318,856	2	318,856	318,856	36%	36%	58%
2	318,856	318,856	2	318,856	318,856	34%	34%	58%
2	318,856	318,856	2	318,856	318,856	33%	33%	58%
2	318,856	318,856	2	318,856	318,856	31%	31%	57%
2	318,856	318,856	2	318,856	318,856	30%	30%	57%
2	318,856	318,856	2	318,856	318,856	28%	28%	57%
2	318,856	318,856	2	318,856	318,856	27%	27%	57%
2	318,856	318,856	2	318,856	318,856	25%	25%	56%
2	318,856	318,856	2	318,856	318,856	23%	23%	56%
2	318,856	318,856	2	318,856	318,856	22%	22%	56%
2	318,856	318,856	2	318,856	318,856	20%	20%	56%
2	318,856	318,856	2	318,856	318,856	19%	19%	56%
2	318,856	318,856	2	318,856	318,856	17%	17%	55%



2	318,856	318,856	2	318,856	318,856	16%	16%	55%
2	318,856	318,856	2	318,856	318,856	14%	14%	55%
2	318,856	318,856	2	318,856	318,856	13%	13%	55%
2	318,856	318,856	2	318,856	318,856	11%	11%	54%
2	318,856	318,856	2	318,856	318,856	9%	9%	54%
2	318,856	318,856	2	318,856	318,856	8%	8%	54%
2	318,856	318,856	2	318,856	318,856	6%	6%	54%
2	318,856	318,856	2	318,856	318,856	5%	5%	53%
2	318,856	318,856	2	318,856	318,856	3%	3%	53%
2	318,856	318,856	2	318,856	318,856	2%	2%	53%
2	318,856	318,856	2	318,856	318,856	0%	0%	53%
3	310,298	318,856	3	310,298	318,856	100%	100%	52%
3	310,298	318,856	3	310,298	318,856	98%	98%	52%
3	310,298	318,856	3	310,298	318,856	96%	96%	52%
3	310,298	318,856	3	310,298	318,856	94%	94%	52%
3	310,298	318,856	3	310,298	318,856	93%	93%	51%
3	318,856	318,856	3	318,856	318,856	91%	91%	51%
3	318,856	318,856	3	318,856	318,856	89%	89%	51%
3	318,856	318,856	3	318,856	318,856	87%	87%	51%
3	318,856	318,856	3	318,856	318,856	85%	85%	50%
3	318,856	318,856	3	318,856	318,856	83%	83%	50%
3	318,856	318,856	3	318,856	318,856	81%	81%	50%
3	318,856	318,856	3	318,856	318,856	80%	80%	50%
3	318,856	318,856	3	318,856	318,856	78%	78%	49%
3	318,856	318,856	3	318,856	318,856	76%	76%	49%
3	318,856	318,856	3	318,856	318,856	74%	74%	49%
3	318,856	318,856	3	318,856	318,856	72%	72%	49%
3	318,856	318,856	3	318,856	318,856	70%	70%	48%
3	318,856	318,856	3	318,856	318,856	69%	69%	48%
3	318,856	318,856	3	318,856	318,856	67%	67%	48%
3	318,856	318,856	3	318,856	318,856	65%	65%	48%
3	318,856	318,856	3	318,856	318,856	63%	63%	47%
3	318,856	318,856	3	318,856	318,856	61%	61%	47%
3	318,856	318,856	3	318,856	318,856	59%	59%	47%
3	318,856	318,856	3	318,856	318,856	57%	57%	47%
3	318,856	318,856	3	318,856	318,856	56%	56%	46%
3	318,856	318,856	3	318,856	318,856	54%	54%	46%
3	318,856	318,856	3	318,856	318,856	52%	52%	46%
3	318,856	318,856	3	318,856	318,856	50%	50%	46%
3	318,856	318,856	3	318,856	318,856	48%	48%	45%
3	318,856	318,856	3	318,856	318,856	46%	46%	45%
3	318,856	318,856	3	318,856	318,856	44%	44%	45%
3	318,856	318,856	3	318,856	318,856	43%	43%	45%
3	318,856	318,856	3	318,856	318,856	41%	41%	44%
3	318,856	318,856	3	318,856	318,856	39%	39%	44%
3	318,856	318,856	3	318,856	318,856	37%	37%	44%
3	318,856	318,856	3	318,856	318,856	35%	35%	44%

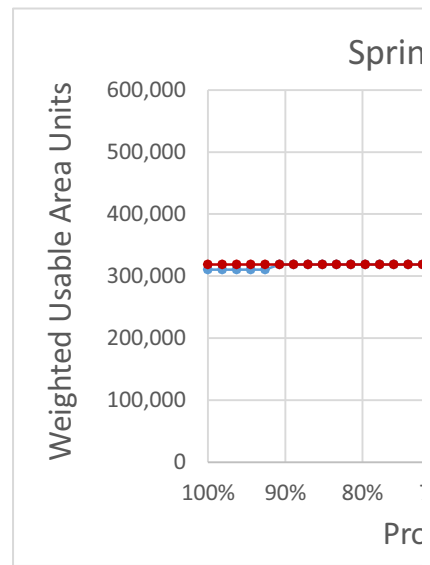
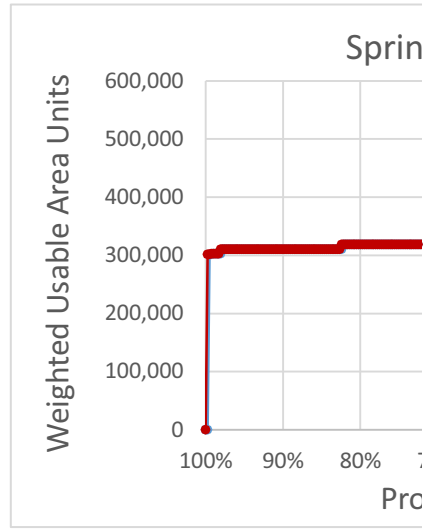
3	318,856	318,856	3	318,856	318,856	33%	33%	44%
3	318,856	318,856	3	318,856	318,856	31%	31%	43%
3	318,856	318,856	3	318,856	318,856	30%	30%	43%
3	318,856	318,856	3	318,856	318,856	28%	28%	43%
3	318,856	318,856	3	318,856	318,856	26%	26%	43%
3	318,856	318,856	3	318,856	318,856	24%	24%	42%
3	318,856	318,856	3	318,856	318,856	22%	22%	42%
3	318,856	318,856	3	318,856	318,856	20%	20%	42%
3	318,856	318,856	3	318,856	318,856	19%	19%	42%
3	318,856	318,856	3	318,856	318,856	17%	17%	41%
3	318,856	318,856	3	318,856	318,856	15%	15%	41%
3	318,856	318,856	3	318,856	318,856	13%	13%	41%
3	318,856	318,856	3	318,856	318,856	11%	11%	41%
3	318,856	318,856	3	318,856	318,856	9%	9%	40%
3	318,856	320,079	3	318,856	320,079	7%	7%	40%
3	318,856	320,079	3	318,856	320,079	6%	6%	40%
3	318,856	320,079	3	318,856	320,079	4%	4%	40%
3	318,856	320,079	3	318,856	320,079	2%	2%	39%
3	318,856	510,275	3	318,856	510,275	0%	0%	39%
4	301,646	301,646	4	301,646	301,646	100%	100%	39%
4	310,298	310,298	4	310,298	310,298	99%	99%	39%
4	310,298	310,298	4	310,298	310,298	98%	98%	38%
4	310,298	310,298	4	310,298	310,298	97%	97%	38%
4	310,298	310,298	4	310,298	310,298	96%	96%	38%
4	310,298	310,298	4	310,298	310,298	95%	95%	38%
4	310,298	310,298	4	310,298	310,298	94%	94%	37%
4	310,298	310,298	4	310,298	310,298	93%	93%	37%
4	310,298	310,298	4	310,298	310,298	92%	92%	37%
4	310,298	310,298	4	310,298	310,298	91%	91%	37%
4	310,298	310,298	4	310,298	310,298	90%	90%	36%
4	310,298	310,298	4	310,298	310,298	89%	89%	36%
4	310,298	310,298	4	310,298	310,298	88%	88%	36%
4	310,298	318,856	4	310,298	318,856	87%	87%	36%
4	310,298	318,856	4	310,298	318,856	86%	86%	35%
4	310,298	318,856	4	310,298	318,856	85%	85%	35%
4	310,298	318,856	4	310,298	318,856	84%	84%	35%
4	310,298	318,856	4	310,298	318,856	83%	83%	35%
4	310,298	318,856	4	310,298	318,856	82%	82%	34%
4	310,298	318,856	4	310,298	318,856	81%	81%	34%
4	310,298	318,856	4	310,298	318,856	80%	80%	34%
4	310,298	318,856	4	310,298	318,856	79%	79%	34%
4	318,856	318,856	4	318,856	318,856	78%	78%	33%
4	318,856	318,856	4	318,856	318,856	77%	77%	33%
4	318,856	318,856	4	318,856	318,856	76%	76%	33%
4	318,856	318,856	4	318,856	318,856	75%	75%	33%
4	318,856	318,856	4	318,856	318,856	74%	74%	33%
4	318,856	318,856	4	318,856	318,856	73%	73%	32%

4	318,856	318,856	4	318,856	318,856	72%	72%	32%
4	318,856	318,856	4	318,856	318,856	71%	71%	32%
4	318,856	318,856	4	318,856	318,856	70%	70%	32%
4	318,856	318,856	4	318,856	318,856	69%	69%	31%
4	318,856	318,856	4	318,856	318,856	68%	68%	31%
4	318,856	318,856	4	318,856	318,856	67%	67%	31%
4	318,856	318,856	4	318,856	318,856	66%	66%	31%
4	318,856	318,856	4	318,856	318,856	65%	65%	30%
4	318,856	318,856	4	318,856	318,856	64%	64%	30%
4	318,856	318,856	4	318,856	318,856	63%	63%	30%
4	318,856	318,856	4	318,856	318,856	62%	62%	30%
4	318,856	318,856	4	318,856	318,856	61%	61%	29%
4	318,856	318,856	4	318,856	318,856	60%	60%	29%
4	318,856	318,856	4	318,856	318,856	59%	59%	29%
4	318,856	318,856	4	318,856	318,856	58%	58%	29%
4	318,856	318,856	4	318,856	318,856	57%	57%	28%
4	318,856	318,856	4	318,856	318,856	56%	56%	28%
4	318,856	318,856	4	318,856	318,856	55%	55%	28%
4	318,856	318,856	4	318,856	318,856	54%	54%	28%
4	318,856	318,856	4	318,856	318,856	53%	53%	27%
4	318,856	318,856	4	318,856	318,856	52%	52%	27%
4	318,856	318,856	4	318,856	318,856	51%	51%	27%
4	318,856	318,856	4	318,856	318,856	49%	49%	27%
4	318,856	318,856	4	318,856	318,856	48%	48%	26%
4	318,856	318,856	4	318,856	318,856	47%	47%	26%
4	318,856	318,856	4	318,856	318,856	46%	46%	26%
4	318,856	318,856	4	318,856	318,856	45%	45%	26%
4	318,856	318,856	4	318,856	318,856	44%	44%	25%
4	318,856	318,856	4	318,856	318,856	43%	43%	25%
4	318,856	318,856	4	318,856	318,856	42%	42%	25%
4	318,856	318,856	4	318,856	318,856	41%	41%	25%
4	318,856	318,856	4	318,856	318,856	40%	40%	24%
4	318,856	318,856	4	318,856	318,856	39%	39%	24%
4	318,856	318,856	4	318,856	318,856	38%	38%	24%
4	318,856	318,856	4	318,856	318,856	37%	37%	24%
4	318,856	318,856	4	318,856	318,856	36%	36%	23%
4	318,856	318,856	4	318,856	318,856	35%	35%	23%
4	318,856	318,856	4	318,856	318,856	34%	34%	23%
4	318,856	318,856	4	318,856	318,856	33%	33%	23%
4	318,856	318,856	4	318,856	318,856	32%	32%	22%
4	318,856	318,856	4	318,856	318,856	31%	31%	22%
4	318,856	318,856	4	318,856	318,856	30%	30%	22%
4	318,856	318,856	4	318,856	318,856	29%	29%	22%
4	318,856	318,856	4	318,856	318,856	28%	28%	22%
4	318,856	318,856	4	318,856	318,856	27%	27%	21%
4	318,856	318,856	4	318,856	318,856	26%	26%	21%
4	318,856	318,856	4	318,856	318,856	25%	25%	21%

4	318,856	318,856	4	318,856	318,856	24%	24%	21%
4	318,856	318,856	4	318,856	318,856	23%	23%	20%
4	318,856	318,856	4	318,856	318,856	22%	22%	20%
4	318,856	318,856	4	318,856	318,856	21%	21%	20%
4	318,856	318,856	4	318,856	318,856	20%	20%	20%
4	318,856	318,856	4	318,856	318,856	19%	19%	19%
4	318,856	318,856	4	318,856	318,856	18%	18%	19%
4	318,856	318,856	4	318,856	318,856	17%	17%	19%
4	318,856	318,856	4	318,856	318,856	16%	16%	19%
4	318,856	318,856	4	318,856	318,856	15%	15%	18%
4	318,856	318,856	4	318,856	318,856	14%	14%	18%
4	318,856	318,856	4	318,856	318,856	13%	13%	18%
4	318,856	318,856	4	318,856	318,856	12%	12%	18%
4	318,856	318,856	4	318,856	318,856	11%	11%	17%
4	318,856	318,856	4	318,856	318,856	10%	10%	17%
4	318,856	318,856	4	318,856	318,856	9%	9%	17%
4	318,856	318,856	4	318,856	318,856	8%	8%	17%
4	318,856	318,856	4	318,856	318,856	7%	7%	16%
4	318,856	318,856	4	318,856	318,856	6%	6%	16%
4	318,856	318,856	4	318,856	318,856	5%	5%	16%
4	318,856	318,856	4	318,856	318,856	4%	4%	16%
4	318,856	318,856	4	318,856	318,856	3%	3%	15%
4	318,856	318,856	4	318,856	318,856	2%	2%	15%
4	318,856	384,941	4	318,856	384,941	1%	1%	15%
4	318,856	510,275	4	318,856	510,275	0%	0%	15%
5	0	310,298	5	0	310,298	100%	100%	14%
5	302,878	310,298	5	302,878	310,298	98%	98%	14%
5	302,878	310,298	5	302,878	310,298	97%	97%	14%
5	302,878	310,298	5	302,878	310,298	95%	95%	14%
5	302,878	310,298	5	302,878	310,298	93%	93%	13%
5	302,878	310,298	5	302,878	310,298	92%	92%	13%
5	310,298	310,298	5	310,298	310,298	90%	90%	13%
5	310,298	310,298	5	310,298	310,298	88%	88%	13%
5	310,298	310,298	5	310,298	310,298	86%	86%	12%
5	310,298	310,298	5	310,298	310,298	85%	85%	12%
5	310,298	318,856	5	310,298	318,856	83%	83%	12%
5	310,298	318,856	5	310,298	318,856	81%	81%	12%
5	310,298	318,856	5	310,298	318,856	80%	80%	11%
5	310,298	318,856	5	310,298	318,856	78%	78%	11%
5	310,298	318,856	5	310,298	318,856	76%	76%	11%
5	310,298	318,856	5	310,298	318,856	75%	75%	11%
5	310,298	318,856	5	310,298	318,856	73%	73%	11%
5	310,298	318,856	5	310,298	318,856	71%	71%	10%
5	310,298	318,856	5	310,298	318,856	69%	69%	10%
5	310,298	318,856	5	310,298	318,856	68%	68%	10%
5	310,298	318,856	5	310,298	318,856	66%	66%	10%
5	310,298	318,856	5	310,298	318,856	64%	64%	9%

5	310,298	318,856	5	310,298	318,856	63%	63%	9%
5	310,298	318,856	5	310,298	318,856	61%	61%	9%
5	310,298	318,856	5	310,298	318,856	59%	59%	9%
5	310,298	318,856	5	310,298	318,856	58%	58%	8%
5	310,298	318,856	5	310,298	318,856	56%	56%	8%
5	310,298	318,856	5	310,298	318,856	54%	54%	8%
5	310,298	318,856	5	310,298	318,856	53%	53%	8%
5	310,298	318,856	5	310,298	318,856	51%	51%	7%
5	310,298	318,856	5	310,298	318,856	49%	49%	7%
5	310,298	318,856	5	310,298	318,856	47%	47%	7%
5	310,298	318,856	5	310,298	318,856	46%	46%	7%
5	310,298	318,856	5	310,298	318,856	44%	44%	6%
5	310,298	318,856	5	310,298	318,856	42%	42%	6%
5	318,856	318,856	5	318,856	318,856	41%	41%	6%
5	318,856	318,856	5	318,856	318,856	39%	39%	6%
5	318,856	318,856	5	318,856	318,856	37%	37%	5%
5	318,856	318,856	5	318,856	318,856	36%	36%	5%
5	318,856	318,856	5	318,856	318,856	34%	34%	5%
5	318,856	318,856	5	318,856	318,856	32%	32%	5%
5	318,856	318,856	5	318,856	318,856	31%	31%	4%
5	318,856	318,856	5	318,856	318,856	29%	29%	4%
5	318,856	318,856	5	318,856	318,856	27%	27%	4%
5	318,856	318,856	5	318,856	318,856	25%	25%	4%
5	318,856	318,856	5	318,856	318,856	24%	24%	3%
5	318,856	318,856	5	318,856	318,856	22%	22%	3%
5	318,856	318,856	5	318,856	318,856	20%	20%	3%
5	318,856	318,856	5	318,856	318,856	19%	19%	3%
5	318,856	318,856	5	318,856	318,856	17%	17%	2%
5	318,856	318,856	5	318,856	318,856	15%	15%	2%
5	318,856	318,856	5	318,856	318,856	14%	14%	2%
5	318,856	318,856	5	318,856	318,856	12%	12%	2%
5	318,856	318,856	5	318,856	318,856	10%	10%	1%
5	318,856	318,856	5	318,856	318,856	8%	8%	1%
5	318,856	318,856	5	318,856	318,856	7%	7%	1%
5	318,856	318,856	5	318,856	318,856	5%	5%	1%
5	318,856	318,856	5	318,856	318,856	3%	3%	0%
5	318,856	510,275	5	318,856	510,275	2%	2%	0%
5	318,856	510,275	5	318,856	510,275	0%	0%	0%

All Water Year Types				
Stages	WUA		Sorted by WYT	
PA20	COS5	PA20	WUA COS	WUA PA
100%	0	0	0	0
100%	0	301,646	0	301,646
100%	301,646	301,646	301,646	301,646
99%	301,646	302,878	301,646	302,878
99%	302,878	302,878	302,878	302,878
99%	302,878	302,878	302,878	302,878
99%	302,878	302,878	302,878	302,878
99%	302,878	302,878	302,878	302,878
98%	302,878	302,878	302,878	302,878
98%	302,878	310,298	302,878	310,298
98%	310,298	310,298	310,298	310,298
98%	310,298	310,298	310,298	310,298
97%	310,298	310,298	310,298	310,298
97%	310,298	310,298	310,298	310,298
97%	310,298	310,298	310,298	310,298
97%	310,298	310,298	310,298	310,298
96%	310,298	310,298	310,298	310,298
96%	310,298	310,298	310,298	310,298
96%	310,298	310,298	310,298	310,298
96%	310,298	310,298	310,298	310,298
95%	310,298	310,298	310,298	310,298
95%	310,298	310,298	310,298	310,298
95%	310,298	310,298	310,298	310,298
95%	310,298	310,298	310,298	310,298
94%	310,298	310,298	310,298	310,298
94%	310,298	310,298	310,298	310,298
94%	310,298	310,298	310,298	310,298
94%	310,298	310,298	310,298	310,298
94%	310,298	310,298	310,298	310,298
93%	310,298	310,298	310,298	310,298
93%	310,298	310,298	310,298	310,298
93%	310,298	310,298	310,298	310,298
93%	310,298	310,298	310,298	310,298
92%	310,298	310,298	310,298	310,298
92%	310,298	310,298	310,298	310,298
92%	310,298	310,298	310,298	310,298
92%	310,298	310,298	310,298	310,298
91%	310,298	310,298	310,298	310,298
91%	310,298	310,298	310,298	310,298
91%	310,298	310,298	310,298	310,298
91%	310,298	310,298	310,298	310,298
90%	310,298	310,298	310,298	310,298
90%	310,298	310,298	310,298	310,298
90%	310,298	310,298	310,298	310,298
90%	310,298	310,298	310,298	310,298













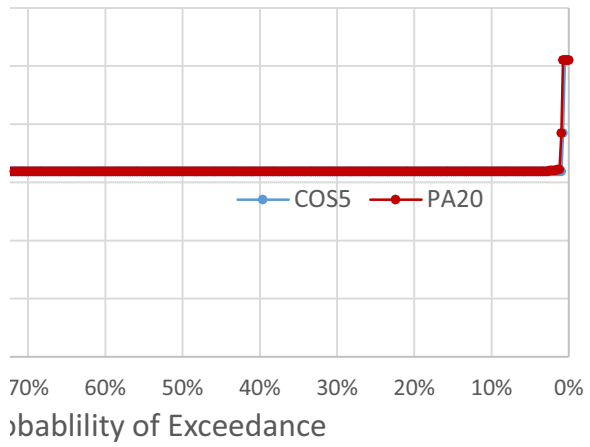




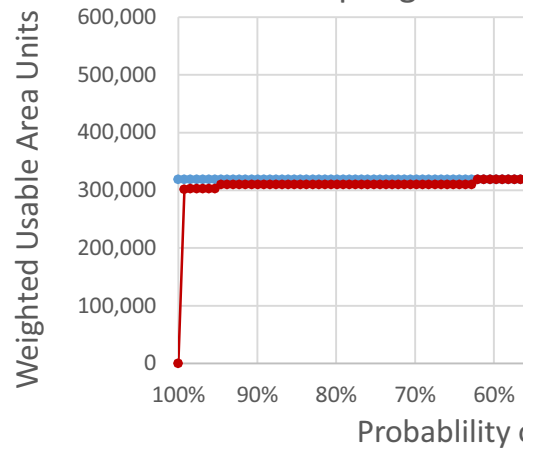


9%	318,856	318,856	318,856	318,856
9%	318,856	318,856	318,856	318,856
9%	318,856	318,856	318,856	318,856
8%	318,856	318,856	318,856	318,856
8%	318,856	318,856	318,856	318,856
8%	318,856	318,856	318,856	318,856
8%	318,856	318,856	318,856	318,856
7%	318,856	318,856	318,856	318,856
7%	318,856	318,856	318,856	318,856
7%	318,856	318,856	318,856	318,856
7%	318,856	318,856	318,856	318,856
6%	318,856	318,856	318,856	318,856
6%	318,856	318,856	318,856	318,856
6%	318,856	318,856	318,856	318,856
6%	318,856	318,856	318,856	318,856
5%	318,856	318,856	318,856	318,856
5%	318,856	318,856	318,856	318,856
5%	318,856	318,856	318,856	318,856
5%	318,856	318,856	318,856	318,856
4%	318,856	318,856	318,856	318,856
4%	318,856	318,856	318,856	318,856
4%	318,856	318,856	318,856	318,856
4%	318,856	318,856	318,856	318,856
3%	318,856	318,856	318,856	318,856
3%	318,856	318,856	318,856	318,856
3%	318,856	318,856	318,856	318,856
3%	318,856	318,856	318,856	318,856
2%	318,856	320,079	318,856	320,079
2%	318,856	320,079	318,856	320,079
2%	318,856	320,079	318,856	320,079
2%	318,856	320,079	318,856	320,079
1%	318,856	321,766	318,856	321,766
1%	318,856	321,766	318,856	321,766
1%	318,856	384,941	318,856	384,941
1%	384,941	510,275	384,941	510,275
0%	510,275	510,275	510,275	510,275
0%	510,275	510,275	510,275	510,275
0%	510,275	510,275	510,275	510,275

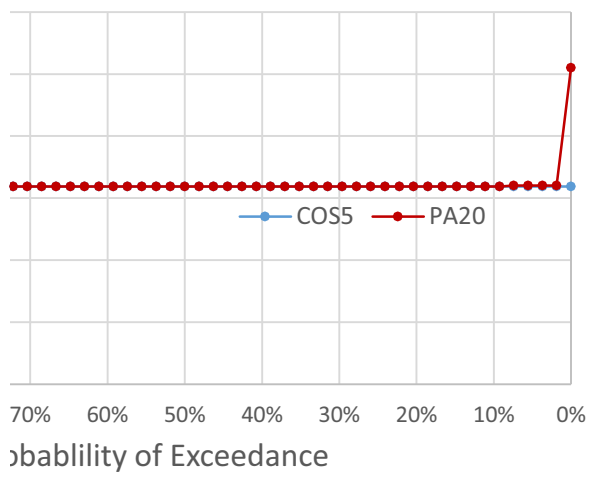
Spring-run Fry, All Years



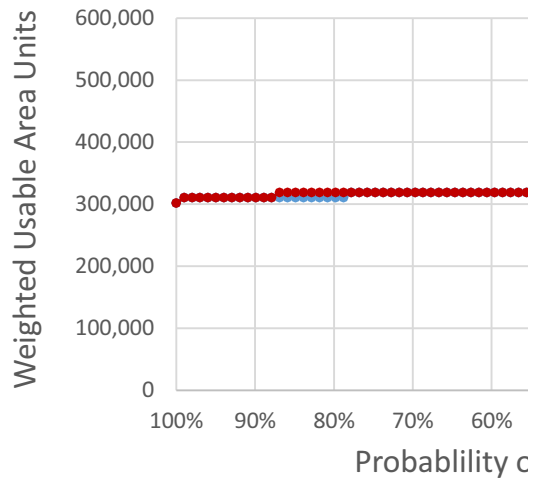
Spring-run Fry



Spring-run Fry, Below Normal Years



Spring-run Fry













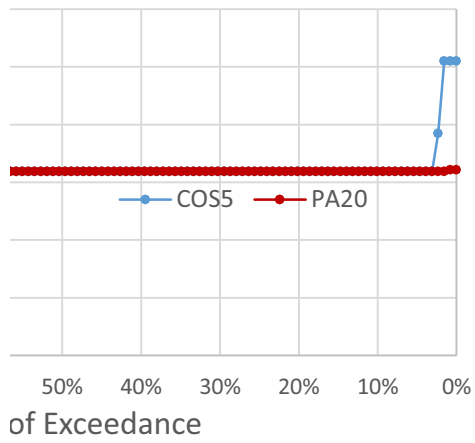




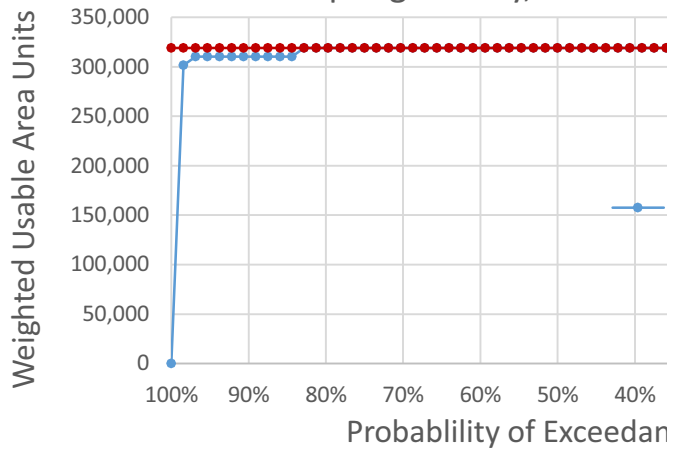




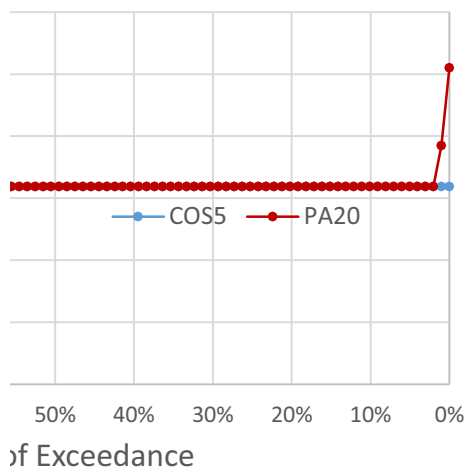
y, Wet Years



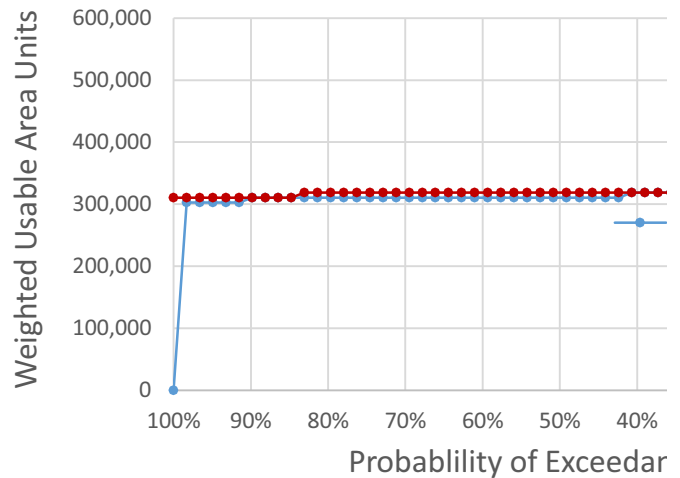
Spring-run Fry, Above N



y, Dry Years



Spring-run Fry, Critical Y















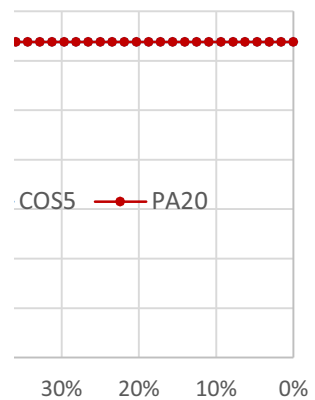






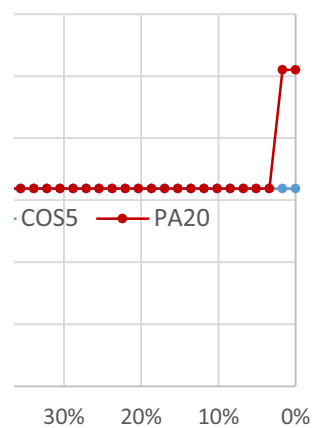


### Normal Years



ice

### Years



ice

275,489

Sorted by WYT			Water Year Types Separately					
			WUA		Percentages		Perce	
WYT	WUA COS	WUA PA	WYT	COS5	PA20	COS5	PA20	COS5
1	203,238	203,238	1	203,238	203,238	100%	100%	100%
1	203,238	203,238	1	203,238	203,238	99%	99%	100%
1	203,238	203,238	1	203,238	203,238	98%	98%	100%
1	203,238	203,238	1	203,238	203,238	98%	98%	99%
1	203,238	203,238	1	203,238	203,238	97%	97%	99%
1	203,238	203,238	1	203,238	203,238	96%	96%	99%
1	203,238	203,238	1	203,238	203,238	95%	95%	99%
1	203,238	203,238	1	203,238	203,238	95%	95%	98%
1	203,238	203,238	1	203,238	203,238	94%	94%	98%
1	203,238	203,238	1	203,238	203,238	93%	93%	98%
1	203,238	203,238	1	203,238	203,238	92%	92%	98%
1	203,238	203,238	1	203,238	203,238	91%	91%	97%
1	203,238	203,238	1	203,238	203,238	91%	91%	97%
1	203,238	203,238	1	203,238	203,238	90%	90%	97%
1	203,238	203,238	1	203,238	203,238	89%	89%	97%
1	203,238	203,238	1	203,238	203,238	88%	88%	96%
1	203,238	203,238	1	203,238	203,238	88%	88%	96%
1	203,238	203,238	1	203,238	203,238	87%	87%	96%
1	203,238	203,238	1	203,238	203,238	86%	86%	96%
1	203,238	203,238	1	203,238	203,238	85%	85%	95%
1	203,238	203,238	1	203,238	203,238	84%	84%	95%
1	203,238	203,238	1	203,238	203,238	84%	84%	95%
1	203,238	203,238	1	203,238	203,238	83%	83%	95%
1	203,238	203,238	1	203,238	203,238	82%	82%	94%
1	203,238	203,238	1	203,238	203,238	81%	81%	94%
1	203,238	203,238	1	203,238	203,238	81%	81%	94%
1	203,238	203,238	1	203,238	203,238	80%	80%	94%
1	203,238	203,238	1	203,238	203,238	79%	79%	93%
1	203,238	203,238	1	203,238	203,238	78%	78%	93%
1	203,238	203,238	1	203,238	203,238	78%	78%	93%
1	203,238	203,238	1	203,238	203,238	77%	77%	93%
1	203,238	203,238	1	203,238	203,238	76%	76%	92%
1	203,238	203,238	1	203,238	203,238	75%	75%	92%
1	203,238	203,238	1	203,238	203,238	74%	74%	92%
1	203,238	203,238	1	203,238	203,238	74%	74%	92%
1	203,238	203,238	1	203,238	203,238	73%	73%	91%
1	203,238	203,238	1	203,238	203,238	72%	72%	91%
1	203,238	203,238	1	203,238	203,238	71%	71%	91%
1	203,238	203,238	1	203,238	203,238	71%	71%	91%
1	203,238	203,238	1	203,238	203,238	70%	70%	90%
1	203,238	203,238	1	203,238	203,238	69%	69%	90%
1	203,238	203,238	1	203,238	203,238	68%	68%	90%
1	203,238	203,238	1	203,238	203,238	67%	67%	90%

1	203,238	203,238	1	203,238	203,238	67%	67%	89%
1	203,238	203,238	1	203,238	203,238	66%	66%	89%
1	203,238	203,238	1	203,238	203,238	65%	65%	89%
1	203,238	203,238	1	203,238	203,238	64%	64%	89%
1	203,238	203,238	1	203,238	203,238	64%	64%	89%
1	203,238	203,238	1	203,238	203,238	63%	63%	88%
1	203,238	203,238	1	203,238	203,238	62%	62%	88%
1	203,238	203,238	1	203,238	203,238	61%	61%	88%
1	203,238	203,238	1	203,238	203,238	60%	60%	88%
1	203,238	203,238	1	203,238	203,238	60%	60%	87%
1	203,238	203,238	1	203,238	203,238	59%	59%	87%
1	203,238	203,238	1	203,238	203,238	58%	58%	87%
1	203,238	203,238	1	203,238	203,238	57%	57%	87%
1	203,238	203,238	1	203,238	203,238	57%	57%	86%
1	203,238	203,238	1	203,238	203,238	56%	56%	86%
1	203,238	203,238	1	203,238	203,238	55%	55%	86%
1	203,238	203,238	1	203,238	203,238	54%	54%	86%
1	203,238	203,238	1	203,238	203,238	53%	53%	85%
1	203,238	203,238	1	203,238	203,238	53%	53%	85%
1	203,238	204,692	1	203,238	204,692	52%	52%	85%
1	203,238	204,692	1	203,238	204,692	51%	51%	85%
1	203,238	204,692	1	203,238	204,692	50%	50%	84%
1	203,238	208,581	1	203,238	208,581	50%	50%	84%
1	203,238	208,581	1	203,238	208,581	49%	49%	84%
1	203,238	208,581	1	203,238	208,581	48%	48%	84%
1	203,238	209,153	1	203,238	209,153	47%	47%	83%
1	203,238	209,153	1	203,238	209,153	47%	47%	83%
1	203,238	209,153	1	203,238	209,153	46%	46%	83%
1	203,238	209,153	1	203,238	209,153	45%	45%	83%
1	203,238	209,153	1	203,238	209,153	44%	44%	82%
1	203,238	209,153	1	203,238	209,153	43%	43%	82%
1	203,238	209,153	1	203,238	209,153	43%	43%	82%
1	203,238	209,153	1	203,238	209,153	42%	42%	82%
1	203,238	209,184	1	203,238	209,184	41%	41%	81%
1	203,238	209,184	1	203,238	209,184	40%	40%	81%
1	203,238	209,184	1	203,238	209,184	40%	40%	81%
1	203,238	209,184	1	203,238	209,184	39%	39%	81%
1	203,238	209,184	1	203,238	209,184	38%	38%	80%
1	203,238	209,184	1	203,238	209,184	37%	37%	80%
1	203,238	209,184	1	203,238	209,184	36%	36%	80%
1	203,238	209,184	1	203,238	209,184	36%	36%	80%
1	203,238	209,184	1	203,238	209,184	35%	35%	79%
1	203,238	209,184	1	203,238	209,184	34%	34%	79%
1	203,238	209,184	1	203,238	209,184	33%	33%	79%
1	203,238	209,184	1	203,238	209,184	33%	33%	79%
1	203,238	209,184	1	203,238	209,184	32%	32%	78%
1	203,238	209,184	1	203,238	209,184	31%	31%	78%

1	203,238	209,184	1	203,238	209,184	30%	30%	78%
1	203,238	209,184	1	203,238	209,184	29%	29%	78%
1	203,238	209,184	1	203,238	209,184	29%	29%	78%
1	203,238	209,184	1	203,238	209,184	28%	28%	77%
1	203,238	209,184	1	203,238	209,184	27%	27%	77%
1	203,238	209,184	1	203,238	209,184	26%	26%	77%
1	203,238	209,184	1	203,238	209,184	26%	26%	77%
1	203,238	209,184	1	203,238	209,184	25%	25%	76%
1	203,238	209,184	1	203,238	209,184	24%	24%	76%
1	203,238	209,184	1	203,238	209,184	23%	23%	76%
1	203,238	209,184	1	203,238	209,184	22%	22%	76%
1	203,238	209,184	1	203,238	209,184	22%	22%	75%
1	212,960	209,184	1	212,960	209,184	21%	21%	75%
1	212,960	209,184	1	212,960	209,184	20%	20%	75%
1	212,960	209,184	1	212,960	209,184	19%	19%	75%
1	212,960	209,184	1	212,960	209,184	19%	19%	74%
1	212,960	209,184	1	212,960	209,184	18%	18%	74%
1	212,960	209,184	1	212,960	209,184	17%	17%	74%
1	212,960	212,960	1	212,960	212,960	16%	16%	74%
1	212,960	212,960	1	212,960	212,960	16%	16%	73%
1	212,960	212,960	1	212,960	212,960	15%	15%	73%
1	212,960	212,960	1	212,960	212,960	14%	14%	73%
1	212,960	212,960	1	212,960	212,960	13%	13%	73%
1	212,960	212,960	1	212,960	212,960	12%	12%	72%
1	212,960	212,960	1	212,960	212,960	12%	12%	72%
1	212,960	212,960	1	212,960	212,960	11%	11%	72%
1	212,960	212,960	1	212,960	212,960	10%	10%	72%
1	212,960	212,960	1	212,960	212,960	9%	9%	71%
1	212,960	212,960	1	212,960	212,960	9%	9%	71%
1	212,960	212,960	1	212,960	212,960	8%	8%	71%
1	212,960	212,960	1	212,960	212,960	7%	7%	71%
1	212,960	212,960	1	212,960	212,960	6%	6%	70%
1	212,960	214,949	1	212,960	214,949	5%	5%	70%
1	212,960	214,949	1	212,960	214,949	5%	5%	70%
1	212,960	214,949	1	212,960	214,949	4%	4%	70%
1	212,960	219,390	1	212,960	219,390	3%	3%	69%
1	212,960	219,390	1	212,960	219,390	2%	2%	69%
1	212,960	219,390	1	212,960	219,390	2%	2%	69%
1	229,397	219,390	1	229,397	219,390	1%	1%	69%
1	275,489	219,390	1	275,489	219,390	0%	0%	68%
2	0	203,238	2	0	203,238	100%	100%	68%
2	203,238	203,238	2	203,238	203,238	98%	98%	68%
2	203,238	203,238	2	203,238	203,238	97%	97%	68%
2	203,238	203,238	2	203,238	203,238	95%	95%	67%
2	203,238	203,238	2	203,238	203,238	94%	94%	67%
2	203,238	203,238	2	203,238	203,238	92%	92%	67%
2	203,238	203,238	2	203,238	203,238	91%	91%	67%

2	203,238	203,238	2	203,238	203,238	89%	89%	67%
2	203,238	203,238	2	203,238	203,238	88%	88%	66%
2	203,238	203,238	2	203,238	203,238	86%	86%	66%
2	203,238	203,238	2	203,238	203,238	84%	84%	66%
2	203,238	203,238	2	203,238	203,238	83%	83%	66%
2	203,238	203,238	2	203,238	203,238	81%	81%	65%
2	203,238	203,238	2	203,238	203,238	80%	80%	65%
2	203,238	203,238	2	203,238	203,238	78%	78%	65%
2	203,238	203,238	2	203,238	203,238	77%	77%	65%
2	203,238	203,238	2	203,238	203,238	75%	75%	64%
2	203,238	203,238	2	203,238	203,238	73%	73%	64%
2	203,238	203,238	2	203,238	203,238	72%	72%	64%
2	203,238	203,238	2	203,238	203,238	70%	70%	64%
2	203,238	203,238	2	203,238	203,238	69%	69%	63%
2	203,238	203,238	2	203,238	203,238	67%	67%	63%
2	203,238	203,238	2	203,238	203,238	66%	66%	63%
2	203,238	203,238	2	203,238	203,238	64%	64%	63%
2	203,238	203,238	2	203,238	203,238	63%	63%	62%
2	203,238	203,238	2	203,238	203,238	61%	61%	62%
2	203,238	203,238	2	203,238	203,238	59%	59%	62%
2	203,238	203,238	2	203,238	203,238	58%	58%	62%
2	203,238	203,238	2	203,238	203,238	56%	56%	61%
2	203,238	203,238	2	203,238	203,238	55%	55%	61%
2	203,238	203,238	2	203,238	203,238	53%	53%	61%
2	203,238	203,238	2	203,238	203,238	52%	52%	61%
2	203,238	203,238	2	203,238	203,238	50%	50%	60%
2	203,238	203,238	2	203,238	203,238	48%	48%	60%
2	203,238	203,238	2	203,238	203,238	47%	47%	60%
2	203,238	203,238	2	203,238	203,238	45%	45%	60%
2	203,238	203,238	2	203,238	203,238	44%	44%	59%
2	203,238	203,238	2	203,238	203,238	42%	42%	59%
2	203,238	203,238	2	203,238	203,238	41%	41%	59%
2	203,238	203,238	2	203,238	203,238	39%	39%	59%
2	203,238	203,238	2	203,238	203,238	38%	38%	58%
2	203,238	203,238	2	203,238	203,238	36%	36%	58%
2	203,238	203,238	2	203,238	203,238	34%	34%	58%
2	203,238	203,238	2	203,238	203,238	33%	33%	58%
2	203,238	203,238	2	203,238	203,238	31%	31%	57%
2	203,238	203,238	2	203,238	203,238	30%	30%	57%
2	203,238	203,238	2	203,238	203,238	28%	28%	57%
2	203,238	203,238	2	203,238	203,238	27%	27%	57%
2	203,238	203,238	2	203,238	203,238	25%	25%	56%
2	209,184	203,238	2	209,184	203,238	23%	23%	56%
2	209,184	203,238	2	209,184	203,238	22%	22%	56%
2	209,184	209,184	2	209,184	209,184	20%	20%	56%
2	212,960	212,960	2	212,960	212,960	19%	19%	56%
2	212,960	212,960	2	212,960	212,960	17%	17%	55%

2	212,960	212,960	2	212,960	212,960	16%	16%	55%
2	212,960	212,960	2	212,960	212,960	14%	14%	55%
2	212,960	212,960	2	212,960	212,960	13%	13%	55%
2	212,960	212,960	2	212,960	212,960	11%	11%	54%
2	212,960	212,960	2	212,960	212,960	9%	9%	54%
2	212,960	212,960	2	212,960	212,960	8%	8%	54%
2	212,960	212,960	2	212,960	212,960	6%	6%	54%
2	212,960	212,960	2	212,960	212,960	5%	5%	53%
2	212,960	212,960	2	212,960	212,960	3%	3%	53%
2	212,960	212,960	2	212,960	212,960	2%	2%	53%
2	212,960	212,960	2	212,960	212,960	0%	0%	53%
3	203,238	203,238	3	203,238	203,238	100%	100%	52%
3	203,238	203,238	3	203,238	203,238	98%	98%	52%
3	203,238	203,238	3	203,238	203,238	96%	96%	52%
3	203,238	203,238	3	203,238	203,238	94%	94%	52%
3	203,238	203,238	3	203,238	203,238	93%	93%	51%
3	203,238	203,238	3	203,238	203,238	91%	91%	51%
3	203,238	203,238	3	203,238	203,238	89%	89%	51%
3	203,238	203,238	3	203,238	203,238	87%	87%	51%
3	203,238	203,238	3	203,238	203,238	85%	85%	50%
3	203,238	203,238	3	203,238	203,238	83%	83%	50%
3	203,238	203,238	3	203,238	203,238	81%	81%	50%
3	203,238	203,238	3	203,238	203,238	80%	80%	50%
3	203,238	203,238	3	203,238	203,238	78%	78%	49%
3	203,238	203,238	3	203,238	203,238	76%	76%	49%
3	203,238	203,238	3	203,238	203,238	74%	74%	49%
3	203,238	203,238	3	203,238	203,238	72%	72%	49%
3	203,238	203,238	3	203,238	203,238	70%	70%	48%
3	203,238	203,238	3	203,238	203,238	69%	69%	48%
3	203,238	203,238	3	203,238	203,238	67%	67%	48%
3	203,238	203,238	3	203,238	203,238	65%	65%	48%
3	203,238	203,238	3	203,238	203,238	63%	63%	47%
3	203,238	203,238	3	203,238	203,238	61%	61%	47%
3	203,238	203,238	3	203,238	203,238	59%	59%	47%
3	203,238	203,238	3	203,238	203,238	57%	57%	47%
3	203,238	203,238	3	203,238	203,238	56%	56%	46%
3	203,238	203,238	3	203,238	203,238	54%	54%	46%
3	203,238	203,238	3	203,238	203,238	52%	52%	46%
3	203,238	203,238	3	203,238	203,238	50%	50%	46%
3	203,238	203,238	3	203,238	203,238	48%	48%	45%
3	203,238	203,238	3	203,238	203,238	46%	46%	45%
3	203,238	203,238	3	203,238	203,238	44%	44%	45%
3	203,238	203,238	3	203,238	203,238	43%	43%	45%
3	203,238	203,238	3	203,238	203,238	41%	41%	44%
3	203,238	203,238	3	203,238	203,238	39%	39%	44%
3	203,238	203,238	3	203,238	203,238	37%	37%	44%
3	203,238	203,238	3	203,238	203,238	35%	35%	44%

3	203,238	203,238	3	203,238	203,238	33%	33%	44%
3	203,238	203,238	3	203,238	203,238	31%	31%	43%
3	203,238	203,238	3	203,238	203,238	30%	30%	43%
3	209,153	203,238	3	209,153	203,238	28%	28%	43%
3	209,184	203,238	3	209,184	203,238	26%	26%	43%
3	209,184	203,849	3	209,184	203,849	24%	24%	42%
3	209,184	203,849	3	209,184	203,849	22%	22%	42%
3	209,184	203,849	3	209,184	203,849	20%	20%	42%
3	209,184	212,960	3	209,184	212,960	19%	19%	42%
3	212,960	212,960	3	212,960	212,960	17%	17%	41%
3	212,960	212,960	3	212,960	212,960	15%	15%	41%
3	212,960	212,960	3	212,960	212,960	13%	13%	41%
3	212,960	212,960	3	212,960	212,960	11%	11%	41%
3	212,960	212,960	3	212,960	212,960	9%	9%	40%
3	212,960	212,960	3	212,960	212,960	7%	7%	40%
3	212,960	212,960	3	212,960	212,960	6%	6%	40%
3	212,960	212,960	3	212,960	212,960	4%	4%	40%
3	212,960	212,960	3	212,960	212,960	2%	2%	39%
3	212,960	212,960	3	212,960	212,960	0%	0%	39%
4	203,238	203,238	4	203,238	203,238	100%	100%	39%
4	203,238	203,238	4	203,238	203,238	99%	99%	39%
4	203,238	203,238	4	203,238	203,238	98%	98%	38%
4	203,238	203,238	4	203,238	203,238	97%	97%	38%
4	203,238	203,238	4	203,238	203,238	96%	96%	38%
4	203,238	203,238	4	203,238	203,238	95%	95%	38%
4	203,238	203,238	4	203,238	203,238	94%	94%	37%
4	203,238	203,238	4	203,238	203,238	93%	93%	37%
4	203,238	203,238	4	203,238	203,238	92%	92%	37%
4	203,238	203,238	4	203,238	203,238	91%	91%	37%
4	203,238	203,238	4	203,238	203,238	90%	90%	36%
4	203,238	203,238	4	203,238	203,238	89%	89%	36%
4	203,238	203,238	4	203,238	203,238	88%	88%	36%
4	203,238	203,238	4	203,238	203,238	87%	87%	36%
4	203,238	203,238	4	203,238	203,238	86%	86%	35%
4	203,238	203,238	4	203,238	203,238	85%	85%	35%
4	203,238	203,238	4	203,238	203,238	84%	84%	35%
4	203,238	203,238	4	203,238	203,238	83%	83%	35%
4	203,238	203,238	4	203,238	203,238	82%	82%	34%
4	203,238	203,238	4	203,238	203,238	81%	81%	34%
4	203,238	203,238	4	203,238	203,238	80%	80%	34%
4	203,238	203,238	4	203,238	203,238	79%	79%	34%
4	203,238	203,238	4	203,238	203,238	78%	78%	33%
4	203,238	203,238	4	203,238	203,238	77%	77%	33%
4	203,238	203,238	4	203,238	203,238	76%	76%	33%
4	203,238	203,238	4	203,238	203,238	75%	75%	33%
4	203,238	203,238	4	203,238	203,238	74%	74%	33%
4	203,238	203,238	4	203,238	203,238	73%	73%	32%

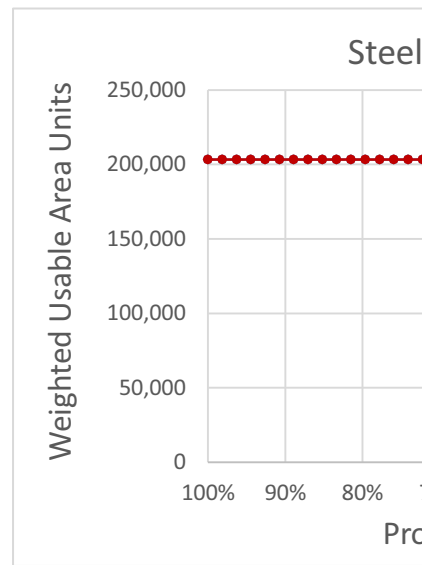
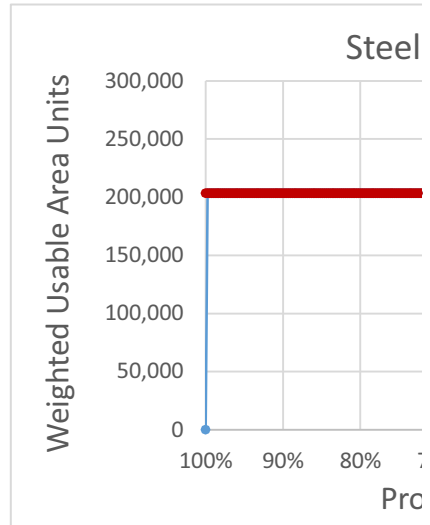
4	203,238	203,238	4	203,238	203,238	72%	72%	32%
4	203,238	203,238	4	203,238	203,238	71%	71%	32%
4	203,238	203,238	4	203,238	203,238	70%	70%	32%
4	203,238	203,238	4	203,238	203,238	69%	69%	31%
4	203,238	203,238	4	203,238	203,238	68%	68%	31%
4	203,238	203,238	4	203,238	203,238	67%	67%	31%
4	203,238	203,238	4	203,238	203,238	66%	66%	31%
4	203,238	203,238	4	203,238	203,238	65%	65%	30%
4	203,238	203,238	4	203,238	203,238	64%	64%	30%
4	203,238	203,238	4	203,238	203,238	63%	63%	30%
4	203,238	203,238	4	203,238	203,238	62%	62%	30%
4	203,238	203,238	4	203,238	203,238	61%	61%	29%
4	203,238	203,238	4	203,238	203,238	60%	60%	29%
4	203,238	203,238	4	203,238	203,238	59%	59%	29%
4	203,238	203,238	4	203,238	203,238	58%	58%	29%
4	203,238	203,238	4	203,238	203,238	57%	57%	28%
4	203,238	203,238	4	203,238	203,238	56%	56%	28%
4	203,238	203,238	4	203,238	203,238	55%	55%	28%
4	203,238	203,238	4	203,238	203,238	54%	54%	28%
4	203,238	203,238	4	203,238	203,238	53%	53%	27%
4	203,238	203,238	4	203,238	203,238	52%	52%	27%
4	203,238	203,238	4	203,238	203,238	51%	51%	27%
4	203,238	203,238	4	203,238	203,238	49%	49%	27%
4	203,238	203,238	4	203,238	203,238	48%	48%	26%
4	203,238	203,238	4	203,238	203,238	47%	47%	26%
4	203,238	203,238	4	203,238	203,238	46%	46%	26%
4	203,238	203,238	4	203,238	203,238	45%	45%	26%
4	203,238	203,238	4	203,238	203,238	44%	44%	25%
4	203,238	203,238	4	203,238	203,238	43%	43%	25%
4	203,238	203,238	4	203,238	203,238	42%	42%	25%
4	203,238	203,238	4	203,238	203,238	41%	41%	25%
4	203,238	203,238	4	203,238	203,238	40%	40%	24%
4	203,238	203,238	4	203,238	203,238	39%	39%	24%
4	209,153	203,238	4	209,153	203,238	38%	38%	24%
4	209,153	203,238	4	209,153	203,238	37%	37%	24%
4	209,153	203,238	4	209,153	203,238	36%	36%	23%
4	209,153	203,238	4	209,153	203,238	35%	35%	23%
4	209,153	203,238	4	209,153	203,238	34%	34%	23%
4	209,184	203,238	4	209,184	203,238	33%	33%	23%
4	209,184	203,238	4	209,184	203,238	32%	32%	22%
4	209,184	208,581	4	209,184	208,581	31%	31%	22%
4	209,184	209,153	4	209,184	209,153	30%	30%	22%
4	209,184	209,153	4	209,184	209,153	29%	29%	22%
4	209,184	209,184	4	209,184	209,184	28%	28%	22%
4	209,184	209,184	4	209,184	209,184	27%	27%	21%
4	209,184	209,184	4	209,184	209,184	26%	26%	21%
4	209,184	209,184	4	209,184	209,184	25%	25%	21%



4	209,184	209,184	4	209,184	209,184	24%	24%	21%
4	209,184	209,184	4	209,184	209,184	23%	23%	20%
4	209,184	209,184	4	209,184	209,184	22%	22%	20%
4	209,184	209,184	4	209,184	209,184	21%	21%	20%
4	209,184	209,184	4	209,184	209,184	20%	20%	20%
4	209,184	212,960	4	209,184	212,960	19%	19%	19%
4	209,184	212,960	4	209,184	212,960	18%	18%	19%
4	209,184	212,960	4	209,184	212,960	17%	17%	19%
4	209,184	212,960	4	209,184	212,960	16%	16%	19%
4	209,184	212,960	4	209,184	212,960	15%	15%	18%
4	212,960	212,960	4	212,960	212,960	14%	14%	18%
4	212,960	212,960	4	212,960	212,960	13%	13%	18%
4	212,960	212,960	4	212,960	212,960	12%	12%	18%
4	212,960	212,960	4	212,960	212,960	11%	11%	17%
4	212,960	212,960	4	212,960	212,960	10%	10%	17%
4	212,960	212,960	4	212,960	212,960	9%	9%	17%
4	212,960	212,960	4	212,960	212,960	8%	8%	17%
4	212,960	212,960	4	212,960	212,960	7%	7%	16%
4	212,960	212,960	4	212,960	212,960	6%	6%	16%
4	212,960	212,960	4	212,960	212,960	5%	5%	16%
4	212,960	212,960	4	212,960	212,960	4%	4%	16%
4	212,960	212,960	4	212,960	212,960	3%	3%	15%
4	212,960	219,390	4	212,960	219,390	2%	2%	15%
4	212,960	219,390	4	212,960	219,390	1%	1%	15%
4	212,960	229,397	4	212,960	229,397	0%	0%	15%
5	203,238	203,238	5	203,238	203,238	100%	100%	14%
5	203,238	203,238	5	203,238	203,238	98%	98%	14%
5	203,238	203,238	5	203,238	203,238	97%	97%	14%
5	203,238	203,238	5	203,238	203,238	95%	95%	14%
5	203,238	203,238	5	203,238	203,238	93%	93%	13%
5	203,238	203,238	5	203,238	203,238	92%	92%	13%
5	203,238	203,238	5	203,238	203,238	90%	90%	13%
5	203,238	203,238	5	203,238	203,238	88%	88%	13%
5	203,238	203,238	5	203,238	203,238	86%	86%	12%
5	203,238	203,238	5	203,238	203,238	85%	85%	12%
5	203,238	203,238	5	203,238	203,238	83%	83%	12%
5	203,238	203,238	5	203,238	203,238	81%	81%	12%
5	203,238	203,238	5	203,238	203,238	80%	80%	11%
5	203,238	203,238	5	203,238	203,238	78%	78%	11%
5	203,238	203,238	5	203,238	203,238	76%	76%	11%
5	203,238	203,238	5	203,238	203,238	75%	75%	11%
5	203,238	203,238	5	203,238	203,238	73%	73%	11%
5	208,581	203,238	5	208,581	203,238	71%	71%	10%
5	208,581	203,238	5	208,581	203,238	69%	69%	10%
5	208,581	203,238	5	208,581	203,238	68%	68%	10%
5	208,581	203,238	5	208,581	203,238	66%	66%	10%
5	209,153	203,238	5	209,153	203,238	64%	64%	9%

5	209,153	203,238	5	209,153	203,238	63%	63%	9%
5	209,153	203,238	5	209,153	203,238	61%	61%	9%
5	209,153	203,238	5	209,153	203,238	59%	59%	9%
5	209,153	203,238	5	209,153	203,238	58%	58%	8%
5	209,184	203,238	5	209,184	203,238	56%	56%	8%
5	209,184	203,238	5	209,184	203,238	54%	54%	8%
5	209,184	203,238	5	209,184	203,238	53%	53%	8%
5	209,184	203,238	5	209,184	203,238	51%	51%	7%
5	209,184	203,238	5	209,184	203,238	49%	49%	7%
5	209,184	203,238	5	209,184	203,238	47%	47%	7%
5	209,184	203,238	5	209,184	203,238	46%	46%	7%
5	209,184	203,238	5	209,184	203,238	44%	44%	6%
5	209,184	203,238	5	209,184	203,238	42%	42%	6%
5	209,184	203,238	5	209,184	203,238	41%	41%	6%
5	209,184	203,238	5	209,184	203,238	39%	39%	6%
5	209,184	203,238	5	209,184	203,238	37%	37%	5%
5	209,184	203,238	5	209,184	203,238	36%	36%	5%
5	209,184	203,238	5	209,184	203,238	34%	34%	5%
5	209,184	209,153	5	209,184	209,153	32%	32%	5%
5	209,184	209,184	5	209,184	209,184	31%	31%	4%
5	209,184	209,184	5	209,184	209,184	29%	29%	4%
5	209,184	209,184	5	209,184	209,184	27%	27%	4%
5	209,184	209,184	5	209,184	209,184	25%	25%	4%
5	209,184	209,184	5	209,184	209,184	24%	24%	3%
5	209,184	209,184	5	209,184	209,184	22%	22%	3%
5	212,960	212,960	5	212,960	212,960	20%	20%	3%
5	212,960	212,960	5	212,960	212,960	19%	19%	3%
5	214,949	212,960	5	214,949	212,960	17%	17%	2%
5	214,949	212,960	5	214,949	212,960	15%	15%	2%
5	214,949	212,960	5	214,949	212,960	14%	14%	2%
5	219,390	212,960	5	219,390	212,960	12%	12%	2%
5	219,390	212,960	5	219,390	212,960	10%	10%	1%
5	219,390	212,960	5	219,390	212,960	8%	8%	1%
5	219,390	212,960	5	219,390	212,960	7%	7%	1%
5	219,390	212,960	5	219,390	212,960	5%	5%	1%
5	219,390	212,960	5	219,390	212,960	3%	3%	0%
5	219,390	219,390	5	219,390	219,390	2%	2%	0%
5	219,390	275,489	5	219,390	275,489	0%	0%	0%

All Water Year Types				
Stages	WUA		Sorted by WYT	
PA20	COS5	PA20	WUA COS	WUA PA
100%	0	203,238	0	203,238
100%	203,238	203,238	203,238	203,238
100%	203,238	203,238	203,238	203,238
99%	203,238	203,238	203,238	203,238
99%	203,238	203,238	203,238	203,238
99%	203,238	203,238	203,238	203,238
99%	203,238	203,238	203,238	203,238
98%	203,238	203,238	203,238	203,238
98%	203,238	203,238	203,238	203,238
98%	203,238	203,238	203,238	203,238
98%	203,238	203,238	203,238	203,238
98%	203,238	203,238	203,238	203,238
97%	203,238	203,238	203,238	203,238
97%	203,238	203,238	203,238	203,238
97%	203,238	203,238	203,238	203,238
97%	203,238	203,238	203,238	203,238
96%	203,238	203,238	203,238	203,238
96%	203,238	203,238	203,238	203,238
96%	203,238	203,238	203,238	203,238
96%	203,238	203,238	203,238	203,238
95%	203,238	203,238	203,238	203,238
95%	203,238	203,238	203,238	203,238
95%	203,238	203,238	203,238	203,238
95%	203,238	203,238	203,238	203,238
94%	203,238	203,238	203,238	203,238
94%	203,238	203,238	203,238	203,238
94%	203,238	203,238	203,238	203,238
94%	203,238	203,238	203,238	203,238
93%	203,238	203,238	203,238	203,238
93%	203,238	203,238	203,238	203,238
93%	203,238	203,238	203,238	203,238
93%	203,238	203,238	203,238	203,238
92%	203,238	203,238	203,238	203,238
92%	203,238	203,238	203,238	203,238
92%	203,238	203,238	203,238	203,238
92%	203,238	203,238	203,238	203,238
91%	203,238	203,238	203,238	203,238
91%	203,238	203,238	203,238	203,238
91%	203,238	203,238	203,238	203,238
91%	203,238	203,238	203,238	203,238
90%	203,238	203,238	203,238	203,238
90%	203,238	203,238	203,238	203,238
90%	203,238	203,238	203,238	203,238
90%	203,238	203,238	203,238	203,238













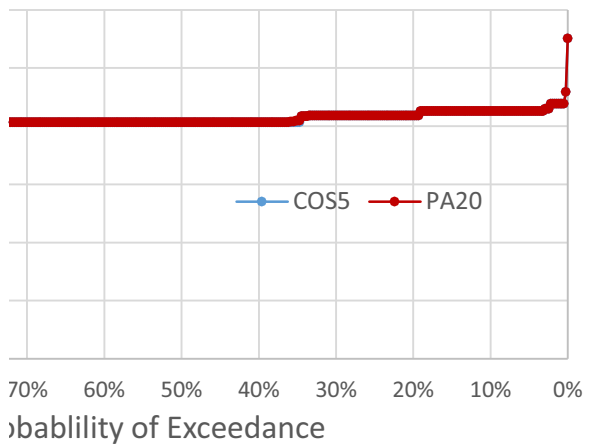




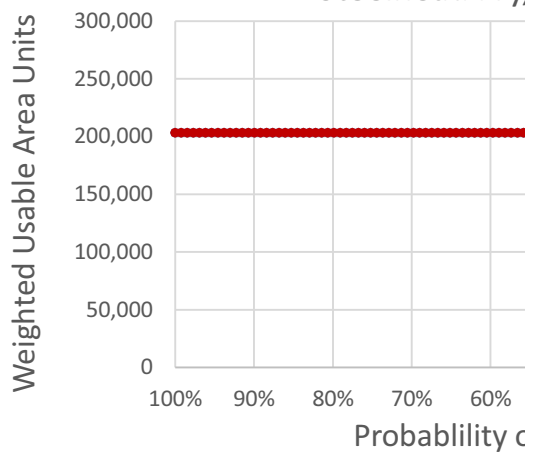


9%	212,960	212,960	212,960	212,960
9%	212,960	212,960	212,960	212,960
9%	212,960	212,960	212,960	212,960
8%	212,960	212,960	212,960	212,960
8%	212,960	212,960	212,960	212,960
8%	212,960	212,960	212,960	212,960
8%	212,960	212,960	212,960	212,960
7%	212,960	212,960	212,960	212,960
7%	212,960	212,960	212,960	212,960
7%	212,960	212,960	212,960	212,960
7%	212,960	212,960	212,960	212,960
6%	212,960	212,960	212,960	212,960
6%	212,960	212,960	212,960	212,960
6%	212,960	212,960	212,960	212,960
6%	212,960	212,960	212,960	212,960
5%	212,960	212,960	212,960	212,960
5%	212,960	212,960	212,960	212,960
5%	212,960	212,960	212,960	212,960
5%	212,960	212,960	212,960	212,960
4%	212,960	212,960	212,960	212,960
4%	212,960	212,960	212,960	212,960
4%	212,960	212,960	212,960	212,960
4%	212,960	212,960	212,960	212,960
3%	212,960	212,960	212,960	212,960
3%	212,960	212,960	212,960	212,960
3%	214,949	214,949	214,949	214,949
3%	214,949	214,949	214,949	214,949
2%	214,949	214,949	214,949	214,949
2%	219,390	219,390	219,390	219,390
2%	219,390	219,390	219,390	219,390
2%	219,390	219,390	219,390	219,390
1%	219,390	219,390	219,390	219,390
1%	219,390	219,390	219,390	219,390
1%	219,390	219,390	219,390	219,390
1%	219,390	219,390	219,390	219,390
0%	219,390	219,390	219,390	219,390
0%	229,397	229,397	229,397	229,397
0%	275,489	275,489	275,489	275,489

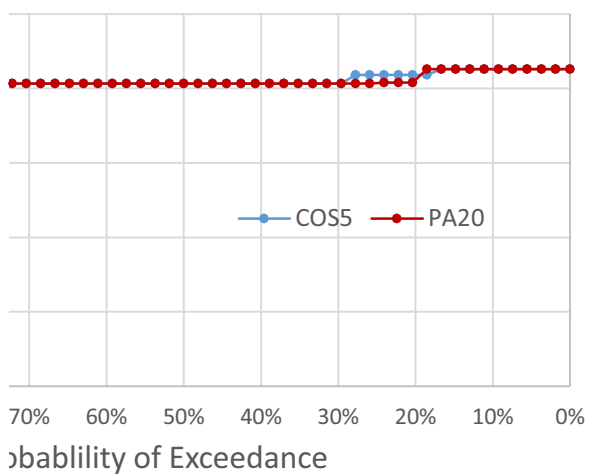
### head Fry, All Years



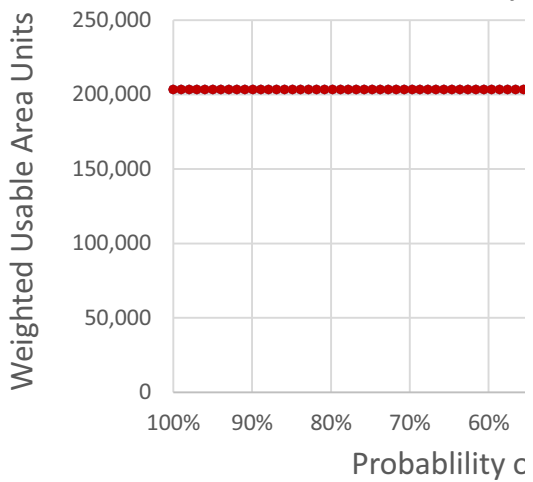
### Steelhead Fry,



### head Fry, Below Normal Years



### Steelhead Fry,













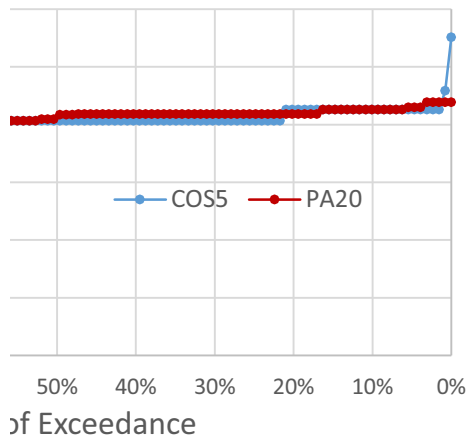




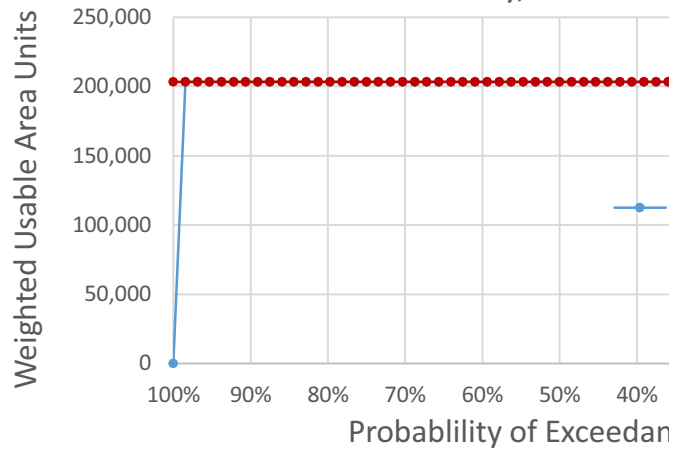




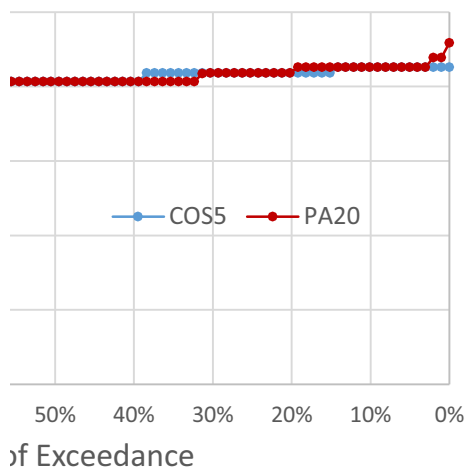
Wet Years



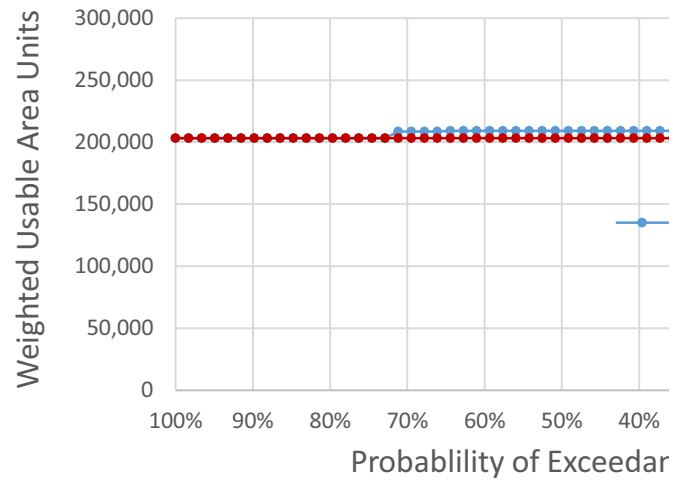
Steelhead Fry, Above N



Dry Years



Steelhead Fry, Critical Y













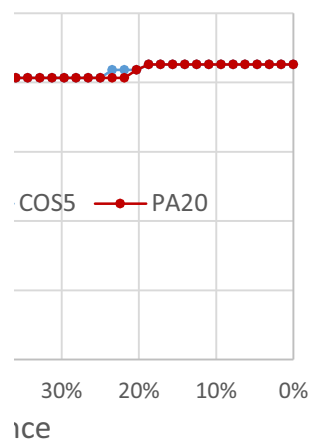




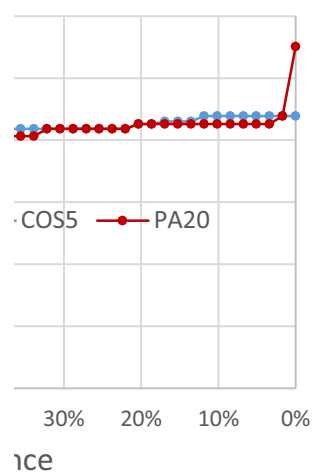




### Normal Years



### Years



497,000

Sorted by WYT			Water Year Types Separately					
WYT	WUA COS	WUA PA	WYT	WUA		Percentages		Perce
				COS5	PA20	COS5	PA20	COS5
1	249,321	249,321	1	249,321	249,321	100%	100%	100%
1	249,321	249,321	1	249,321	249,321	99%	99%	100%
1	249,321	249,321	1	249,321	249,321	98%	98%	100%
1	249,321	249,321	1	249,321	249,321	98%	98%	99%
1	249,321	249,321	1	249,321	249,321	97%	97%	99%
1	249,321	249,321	1	249,321	249,321	96%	96%	99%
1	249,321	249,321	1	249,321	249,321	95%	95%	99%
1	249,321	249,321	1	249,321	249,321	95%	95%	98%
1	249,321	249,321	1	249,321	249,321	94%	94%	98%
1	249,321	249,321	1	249,321	249,321	93%	93%	98%
1	249,321	249,321	1	249,321	249,321	92%	92%	98%
1	249,321	249,321	1	249,321	249,321	91%	91%	97%
1	249,321	249,321	1	249,321	249,321	91%	91%	97%
1	249,321	249,321	1	249,321	249,321	90%	90%	97%
1	249,321	249,321	1	249,321	249,321	89%	89%	97%
1	249,321	249,321	1	249,321	249,321	88%	88%	96%
1	249,321	249,321	1	249,321	249,321	88%	88%	96%
1	249,321	249,321	1	249,321	249,321	87%	87%	96%
1	249,321	249,321	1	249,321	249,321	86%	86%	96%
1	249,321	249,321	1	249,321	249,321	85%	85%	95%
1	249,321	249,321	1	249,321	249,321	84%	84%	95%
1	249,321	249,321	1	249,321	249,321	84%	84%	95%
1	249,321	249,321	1	249,321	249,321	83%	83%	95%
1	249,321	249,321	1	249,321	249,321	82%	82%	94%
1	249,321	249,321	1	249,321	249,321	81%	81%	94%
1	249,321	249,321	1	249,321	249,321	81%	81%	94%
1	249,321	249,321	1	249,321	249,321	80%	80%	94%
1	249,321	249,321	1	249,321	249,321	79%	79%	93%
1	249,321	249,321	1	249,321	249,321	78%	78%	93%
1	249,321	249,321	1	249,321	249,321	78%	78%	93%
1	249,321	249,321	1	249,321	249,321	77%	77%	93%
1	249,321	249,321	1	249,321	249,321	76%	76%	92%
1	249,321	249,321	1	249,321	249,321	75%	75%	92%
1	249,321	249,321	1	249,321	249,321	74%	74%	92%
1	249,321	249,321	1	249,321	249,321	74%	74%	92%
1	249,321	249,321	1	249,321	249,321	73%	73%	91%
1	249,321	249,321	1	249,321	249,321	72%	72%	91%
1	249,321	249,321	1	249,321	249,321	71%	71%	91%
1	249,321	249,321	1	249,321	249,321	71%	71%	91%
1	249,321	249,321	1	249,321	249,321	70%	70%	90%
1	249,321	249,321	1	249,321	249,321	69%	69%	90%
1	249,321	249,321	1	249,321	249,321	68%	68%	90%
1	249,321	249,321	1	249,321	249,321	67%	67%	90%

1	249,321	249,321	1	249,321	249,321	67%	67%	89%
1	249,321	249,321	1	249,321	249,321	66%	66%	89%
1	249,321	249,321	1	249,321	249,321	65%	65%	89%
1	249,321	249,321	1	249,321	249,321	64%	64%	89%
1	249,321	249,321	1	249,321	249,321	64%	64%	89%
1	249,321	249,321	1	249,321	249,321	63%	63%	88%
1	249,321	249,321	1	249,321	249,321	62%	62%	88%
1	249,321	249,321	1	249,321	249,321	61%	61%	88%
1	249,321	249,321	1	249,321	249,321	60%	60%	88%
1	421,350	249,321	1	421,350	249,321	60%	60%	87%
1	421,350	249,321	1	421,350	249,321	59%	59%	87%
1	421,350	249,321	1	421,350	249,321	58%	58%	87%
1	421,350	249,321	1	421,350	249,321	57%	57%	87%
1	421,350	249,321	1	421,350	249,321	57%	57%	86%
1	421,350	276,361	1	421,350	276,361	56%	56%	86%
1	421,350	353,767	1	421,350	353,767	55%	55%	86%
1	421,350	353,767	1	421,350	353,767	54%	54%	86%
1	421,350	353,767	1	421,350	353,767	53%	53%	85%
1	421,350	353,767	1	421,350	353,767	53%	53%	85%
1	421,350	353,767	1	421,350	353,767	52%	52%	85%
1	421,350	353,767	1	421,350	353,767	51%	51%	85%
1	421,350	353,767	1	421,350	353,767	50%	50%	84%
1	421,350	353,767	1	421,350	353,767	50%	50%	84%
1	421,350	353,767	1	421,350	353,767	49%	49%	84%
1	421,350	353,767	1	421,350	353,767	48%	48%	84%
1	421,350	353,767	1	421,350	353,767	47%	47%	83%
1	421,350	353,767	1	421,350	353,767	47%	47%	83%
1	421,350	353,767	1	421,350	353,767	46%	46%	83%
1	421,350	353,767	1	421,350	353,767	45%	45%	83%
1	421,350	353,767	1	421,350	353,767	44%	44%	82%
1	421,350	353,767	1	421,350	353,767	43%	43%	82%
1	421,350	363,469	1	421,350	363,469	43%	43%	82%
1	421,350	363,469	1	421,350	363,469	42%	42%	82%
1	421,350	363,469	1	421,350	363,469	41%	41%	81%
1	421,350	421,350	1	421,350	421,350	40%	40%	81%
1	421,350	421,350	1	421,350	421,350	40%	40%	81%
1	421,350	421,350	1	421,350	421,350	39%	39%	81%
1	421,350	421,350	1	421,350	421,350	38%	38%	80%
1	421,350	421,350	1	421,350	421,350	37%	37%	80%
1	421,350	421,350	1	421,350	421,350	36%	36%	80%
1	421,350	421,350	1	421,350	421,350	36%	36%	80%
1	421,350	421,350	1	421,350	421,350	35%	35%	79%
1	421,350	421,350	1	421,350	421,350	34%	34%	79%
1	421,350	421,350	1	421,350	421,350	33%	33%	79%
1	421,350	421,350	1	421,350	421,350	33%	33%	79%
1	421,350	421,350	1	421,350	421,350	32%	32%	78%
1	421,350	421,350	1	421,350	421,350	31%	31%	78%



1	421,350	421,350	1	421,350	421,350	30%	30%	78%
1	421,350	421,350	1	421,350	421,350	29%	29%	78%
1	421,350	421,350	1	421,350	421,350	29%	29%	78%
1	421,350	421,350	1	421,350	421,350	28%	28%	77%
1	421,350	421,350	1	421,350	421,350	27%	27%	77%
1	421,350	421,350	1	421,350	421,350	26%	26%	77%
1	421,350	421,350	1	421,350	421,350	26%	26%	77%
1	421,350	421,350	1	421,350	421,350	25%	25%	76%
1	421,350	421,350	1	421,350	421,350	24%	24%	76%
1	421,350	421,350	1	421,350	421,350	23%	23%	76%
1	421,350	421,350	1	421,350	421,350	22%	22%	76%
1	421,350	421,350	1	421,350	421,350	22%	22%	75%
1	421,350	421,350	1	421,350	421,350	21%	21%	75%
1	421,350	421,350	1	421,350	421,350	20%	20%	75%
1	497,000	421,350	1	497,000	421,350	19%	19%	75%
1	497,000	421,350	1	497,000	421,350	19%	19%	74%
1	497,000	421,350	1	497,000	421,350	18%	18%	74%
1	497,000	428,076	1	497,000	428,076	17%	17%	74%
1	497,000	460,240	1	497,000	460,240	16%	16%	74%
1	497,000	460,240	1	497,000	460,240	16%	16%	73%
1	497,000	460,240	1	497,000	460,240	15%	15%	73%
1	497,000	460,240	1	497,000	460,240	14%	14%	73%
1	497,000	460,240	1	497,000	460,240	13%	13%	73%
1	497,000	460,240	1	497,000	460,240	12%	12%	72%
1	497,000	460,240	1	497,000	460,240	12%	12%	72%
1	497,000	460,240	1	497,000	460,240	11%	11%	72%
1	497,000	497,000	1	497,000	497,000	10%	10%	72%
1	497,000	497,000	1	497,000	497,000	9%	9%	71%
1	497,000	497,000	1	497,000	497,000	9%	9%	71%
1	497,000	497,000	1	497,000	497,000	8%	8%	71%
1	497,000	497,000	1	497,000	497,000	7%	7%	71%
1	497,000	497,000	1	497,000	497,000	6%	6%	70%
1	497,000	497,000	1	497,000	497,000	5%	5%	70%
1	497,000	497,000	1	497,000	497,000	5%	5%	70%
1	497,000	497,000	1	497,000	497,000	4%	4%	70%
1	497,000	497,000	1	497,000	497,000	3%	3%	69%
1	497,000	497,000	1	497,000	497,000	2%	2%	69%
1	497,000	497,000	1	497,000	497,000	2%	2%	69%
1	497,000	497,000	1	497,000	497,000	1%	1%	69%
1	497,000	497,000	1	497,000	497,000	0%	0%	68%
2	249,321	249,321	2	249,321	249,321	100%	100%	68%
2	249,321	249,321	2	249,321	249,321	98%	98%	68%
2	249,321	249,321	2	249,321	249,321	97%	97%	68%
2	249,321	249,321	2	249,321	249,321	95%	95%	67%
2	249,321	249,321	2	249,321	249,321	94%	94%	67%
2	249,321	249,321	2	249,321	249,321	92%	92%	67%
2	249,321	249,321	2	249,321	249,321	91%	91%	67%

2	249,321	249,321	2	249,321	249,321	89%	89%	67%
2	249,321	249,321	2	249,321	249,321	88%	88%	66%
2	249,321	249,321	2	249,321	249,321	86%	86%	66%
2	249,321	249,321	2	249,321	249,321	84%	84%	66%
2	249,321	249,321	2	249,321	249,321	83%	83%	66%
2	249,321	249,321	2	249,321	249,321	81%	81%	65%
2	249,321	249,321	2	249,321	249,321	80%	80%	65%
2	249,321	249,321	2	249,321	249,321	78%	78%	65%
2	249,321	249,321	2	249,321	249,321	77%	77%	65%
2	249,321	249,321	2	249,321	249,321	75%	75%	64%
2	249,321	249,321	2	249,321	249,321	73%	73%	64%
2	249,321	249,321	2	249,321	249,321	72%	72%	64%
2	249,321	249,321	2	249,321	249,321	70%	70%	64%
2	249,321	249,321	2	249,321	249,321	69%	69%	63%
2	249,321	249,321	2	249,321	249,321	67%	67%	63%
2	249,321	249,321	2	249,321	249,321	66%	66%	63%
2	249,321	249,321	2	249,321	249,321	64%	64%	63%
2	249,321	249,321	2	249,321	249,321	63%	63%	62%
2	249,321	249,321	2	249,321	249,321	61%	61%	62%
2	353,767	353,767	2	353,767	353,767	59%	59%	62%
2	421,350	421,350	2	421,350	421,350	58%	58%	62%
2	421,350	421,350	2	421,350	421,350	56%	56%	61%
2	421,350	421,350	2	421,350	421,350	55%	55%	61%
2	421,350	421,350	2	421,350	421,350	53%	53%	61%
2	421,350	421,350	2	421,350	421,350	52%	52%	61%
2	421,350	421,350	2	421,350	421,350	50%	50%	60%
2	421,350	421,350	2	421,350	421,350	48%	48%	60%
2	421,350	421,350	2	421,350	421,350	47%	47%	60%
2	421,350	421,350	2	421,350	421,350	45%	45%	60%
2	421,350	421,350	2	421,350	421,350	44%	44%	59%
2	421,350	421,350	2	421,350	421,350	42%	42%	59%
2	421,350	421,350	2	421,350	421,350	41%	41%	59%
2	421,350	421,350	2	421,350	421,350	39%	39%	59%
2	421,350	421,350	2	421,350	421,350	38%	38%	58%
2	421,350	421,350	2	421,350	421,350	36%	36%	58%
2	421,350	421,350	2	421,350	421,350	34%	34%	58%
2	421,350	421,350	2	421,350	421,350	33%	33%	58%
2	421,350	421,350	2	421,350	421,350	31%	31%	57%
2	421,350	421,350	2	421,350	421,350	30%	30%	57%
2	421,350	421,350	2	421,350	421,350	28%	28%	57%
2	421,350	421,350	2	421,350	421,350	27%	27%	57%
2	421,350	421,350	2	421,350	421,350	25%	25%	56%
2	421,350	421,350	2	421,350	421,350	23%	23%	56%
2	421,350	421,350	2	421,350	421,350	22%	22%	56%
2	421,350	421,350	2	421,350	421,350	20%	20%	56%
2	497,000	497,000	2	497,000	497,000	19%	19%	56%
2	497,000	497,000	2	497,000	497,000	17%	17%	55%

2	497,000	497,000	2	497,000	497,000	16%	16%	55%
2	497,000	497,000	2	497,000	497,000	14%	14%	55%
2	497,000	497,000	2	497,000	497,000	13%	13%	55%
2	497,000	497,000	2	497,000	497,000	11%	11%	54%
2	497,000	497,000	2	497,000	497,000	9%	9%	54%
2	497,000	497,000	2	497,000	497,000	8%	8%	54%
2	497,000	497,000	2	497,000	497,000	6%	6%	54%
2	497,000	497,000	2	497,000	497,000	5%	5%	53%
2	497,000	497,000	2	497,000	497,000	3%	3%	53%
2	497,000	497,000	2	497,000	497,000	2%	2%	53%
2	497,000	497,000	2	497,000	497,000	0%	0%	53%
3	249,321	249,321	3	249,321	249,321	100%	100%	52%
3	249,321	249,321	3	249,321	249,321	98%	98%	52%
3	249,321	249,321	3	249,321	249,321	96%	96%	52%
3	249,321	249,321	3	249,321	249,321	94%	94%	52%
3	249,321	249,321	3	249,321	249,321	93%	93%	51%
3	249,321	249,321	3	249,321	249,321	91%	91%	51%
3	249,321	249,321	3	249,321	249,321	89%	89%	51%
3	249,321	249,321	3	249,321	249,321	87%	87%	51%
3	249,321	249,321	3	249,321	249,321	85%	85%	50%
3	249,321	249,321	3	249,321	249,321	83%	83%	50%
3	249,321	249,321	3	249,321	249,321	81%	81%	50%
3	249,321	249,321	3	249,321	249,321	80%	80%	50%
3	249,321	249,321	3	249,321	249,321	78%	78%	49%
3	249,321	249,321	3	249,321	249,321	76%	76%	49%
3	249,321	249,321	3	249,321	249,321	74%	74%	49%
3	249,321	249,321	3	249,321	249,321	72%	72%	49%
3	249,321	249,321	3	249,321	249,321	70%	70%	48%
3	249,321	249,321	3	249,321	249,321	69%	69%	48%
3	249,321	249,321	3	249,321	249,321	67%	67%	48%
3	249,321	249,321	3	249,321	249,321	65%	65%	48%
3	249,321	249,321	3	249,321	249,321	63%	63%	47%
3	249,321	249,321	3	249,321	249,321	61%	61%	47%
3	353,767	421,350	3	353,767	421,350	59%	59%	47%
3	353,767	421,350	3	353,767	421,350	57%	57%	47%
3	353,767	421,350	3	353,767	421,350	56%	56%	46%
3	421,350	421,350	3	421,350	421,350	54%	54%	46%
3	421,350	421,350	3	421,350	421,350	52%	52%	46%
3	421,350	421,350	3	421,350	421,350	50%	50%	46%
3	421,350	421,350	3	421,350	421,350	48%	48%	45%
3	421,350	421,350	3	421,350	421,350	46%	46%	45%
3	421,350	421,350	3	421,350	421,350	44%	44%	45%
3	421,350	421,350	3	421,350	421,350	43%	43%	45%
3	421,350	421,350	3	421,350	421,350	41%	41%	44%
3	421,350	421,350	3	421,350	421,350	39%	39%	44%
3	421,350	421,350	3	421,350	421,350	37%	37%	44%
3	421,350	421,350	3	421,350	421,350	35%	35%	44%

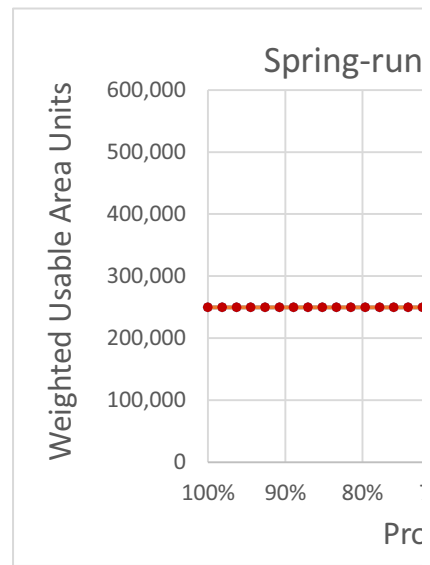
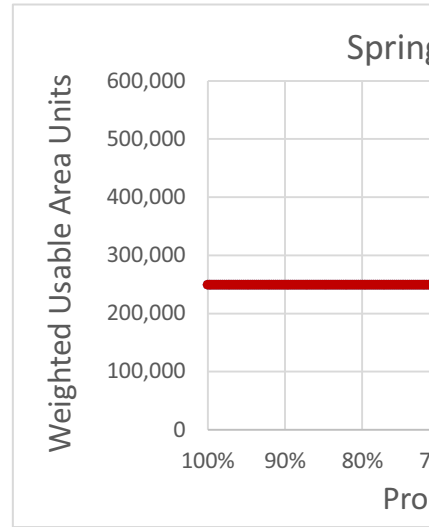
3	421,350	421,350	3	421,350	421,350	33%	33%	44%
3	421,350	421,350	3	421,350	421,350	31%	31%	43%
3	421,350	421,350	3	421,350	421,350	30%	30%	43%
3	421,350	421,350	3	421,350	421,350	28%	28%	43%
3	421,350	421,350	3	421,350	421,350	26%	26%	43%
3	421,350	421,350	3	421,350	421,350	24%	24%	42%
3	421,350	421,350	3	421,350	421,350	22%	22%	42%
3	421,350	424,177	3	421,350	424,177	20%	20%	42%
3	460,240	497,000	3	460,240	497,000	19%	19%	42%
3	497,000	497,000	3	497,000	497,000	17%	17%	41%
3	497,000	497,000	3	497,000	497,000	15%	15%	41%
3	497,000	497,000	3	497,000	497,000	13%	13%	41%
3	497,000	497,000	3	497,000	497,000	11%	11%	41%
3	497,000	497,000	3	497,000	497,000	9%	9%	40%
3	497,000	497,000	3	497,000	497,000	7%	7%	40%
3	497,000	497,000	3	497,000	497,000	6%	6%	40%
3	497,000	497,000	3	497,000	497,000	4%	4%	40%
3	497,000	497,000	3	497,000	497,000	2%	2%	39%
3	497,000	497,000	3	497,000	497,000	0%	0%	39%
4	249,321	249,321	4	249,321	249,321	100%	100%	39%
4	249,321	249,321	4	249,321	249,321	99%	99%	39%
4	249,321	249,321	4	249,321	249,321	98%	98%	38%
4	249,321	249,321	4	249,321	249,321	97%	97%	38%
4	249,321	249,321	4	249,321	249,321	96%	96%	38%
4	249,321	249,321	4	249,321	249,321	95%	95%	38%
4	249,321	249,321	4	249,321	249,321	94%	94%	37%
4	249,321	249,321	4	249,321	249,321	93%	93%	37%
4	249,321	249,321	4	249,321	249,321	92%	92%	37%
4	249,321	249,321	4	249,321	249,321	91%	91%	37%
4	249,321	249,321	4	249,321	249,321	90%	90%	36%
4	249,321	249,321	4	249,321	249,321	89%	89%	36%
4	249,321	249,321	4	249,321	249,321	88%	88%	36%
4	249,321	249,321	4	249,321	249,321	87%	87%	36%
4	249,321	249,321	4	249,321	249,321	86%	86%	35%
4	249,321	249,321	4	249,321	249,321	85%	85%	35%
4	249,321	249,321	4	249,321	249,321	84%	84%	35%
4	249,321	249,321	4	249,321	249,321	83%	83%	35%
4	249,321	249,321	4	249,321	249,321	82%	82%	34%
4	249,321	249,321	4	249,321	249,321	81%	81%	34%
4	249,321	249,321	4	249,321	249,321	80%	80%	34%
4	249,321	249,321	4	249,321	249,321	79%	79%	34%
4	249,321	249,321	4	249,321	249,321	78%	78%	33%
4	249,321	249,321	4	249,321	249,321	77%	77%	33%
4	249,321	249,321	4	249,321	249,321	76%	76%	33%
4	249,321	249,321	4	249,321	249,321	75%	75%	33%
4	249,321	249,321	4	249,321	249,321	74%	74%	33%
4	249,321	249,321	4	249,321	249,321	73%	73%	32%

4	249,321	249,321	4	249,321	249,321	72%	72%	32%
4	249,321	249,321	4	249,321	249,321	71%	71%	32%
4	249,321	249,321	4	249,321	249,321	70%	70%	32%
4	249,321	249,321	4	249,321	249,321	69%	69%	31%
4	249,321	249,321	4	249,321	249,321	68%	68%	31%
4	249,321	249,321	4	249,321	249,321	67%	67%	31%
4	249,321	249,321	4	249,321	249,321	66%	66%	31%
4	249,321	249,321	4	249,321	249,321	65%	65%	30%
4	249,321	249,321	4	249,321	249,321	64%	64%	30%
4	249,321	249,321	4	249,321	249,321	63%	63%	30%
4	249,321	249,321	4	249,321	249,321	62%	62%	30%
4	249,321	249,321	4	249,321	249,321	61%	61%	29%
4	353,767	249,321	4	353,767	249,321	60%	60%	29%
4	353,767	249,321	4	353,767	249,321	59%	59%	29%
4	353,767	353,767	4	353,767	353,767	58%	58%	29%
4	353,767	353,767	4	353,767	353,767	57%	57%	28%
4	353,767	353,767	4	353,767	353,767	56%	56%	28%
4	353,767	353,767	4	353,767	353,767	55%	55%	28%
4	353,767	353,767	4	353,767	353,767	54%	54%	28%
4	353,767	363,469	4	353,767	363,469	53%	53%	27%
4	353,767	421,350	4	353,767	421,350	52%	52%	27%
4	353,767	421,350	4	353,767	421,350	51%	51%	27%
4	353,767	421,350	4	353,767	421,350	49%	49%	27%
4	421,350	421,350	4	421,350	421,350	48%	48%	26%
4	421,350	421,350	4	421,350	421,350	47%	47%	26%
4	421,350	421,350	4	421,350	421,350	46%	46%	26%
4	421,350	421,350	4	421,350	421,350	45%	45%	26%
4	421,350	421,350	4	421,350	421,350	44%	44%	25%
4	421,350	421,350	4	421,350	421,350	43%	43%	25%
4	421,350	421,350	4	421,350	421,350	42%	42%	25%
4	421,350	421,350	4	421,350	421,350	41%	41%	25%
4	421,350	421,350	4	421,350	421,350	40%	40%	24%
4	421,350	421,350	4	421,350	421,350	39%	39%	24%
4	421,350	421,350	4	421,350	421,350	38%	38%	24%
4	421,350	421,350	4	421,350	421,350	37%	37%	24%
4	421,350	421,350	4	421,350	421,350	36%	36%	23%
4	421,350	421,350	4	421,350	421,350	35%	35%	23%
4	421,350	421,350	4	421,350	421,350	34%	34%	23%
4	421,350	421,350	4	421,350	421,350	33%	33%	23%
4	421,350	421,350	4	421,350	421,350	32%	32%	22%
4	421,350	421,350	4	421,350	421,350	31%	31%	22%
4	421,350	421,350	4	421,350	421,350	30%	30%	22%
4	421,350	421,350	4	421,350	421,350	29%	29%	22%
4	421,350	421,350	4	421,350	421,350	28%	28%	22%
4	421,350	421,350	4	421,350	421,350	27%	27%	21%
4	421,350	421,350	4	421,350	421,350	26%	26%	21%
4	421,350	421,350	4	421,350	421,350	25%	25%	21%

4	421,350	421,350	4	421,350	421,350	24%	24%	21%
4	421,350	421,350	4	421,350	421,350	23%	23%	20%
4	421,350	421,350	4	421,350	421,350	22%	22%	20%
4	421,350	421,350	4	421,350	421,350	21%	21%	20%
4	421,350	421,350	4	421,350	421,350	20%	20%	20%
4	460,240	421,350	4	460,240	421,350	19%	19%	19%
4	460,240	460,240	4	460,240	460,240	18%	18%	19%
4	460,240	460,240	4	460,240	460,240	17%	17%	19%
4	460,240	497,000	4	460,240	497,000	16%	16%	19%
4	460,240	497,000	4	460,240	497,000	15%	15%	18%
4	497,000	497,000	4	497,000	497,000	14%	14%	18%
4	497,000	497,000	4	497,000	497,000	13%	13%	18%
4	497,000	497,000	4	497,000	497,000	12%	12%	18%
4	497,000	497,000	4	497,000	497,000	11%	11%	17%
4	497,000	497,000	4	497,000	497,000	10%	10%	17%
4	497,000	497,000	4	497,000	497,000	9%	9%	17%
4	497,000	497,000	4	497,000	497,000	8%	8%	17%
4	497,000	497,000	4	497,000	497,000	7%	7%	16%
4	497,000	497,000	4	497,000	497,000	6%	6%	16%
4	497,000	497,000	4	497,000	497,000	5%	5%	16%
4	497,000	497,000	4	497,000	497,000	4%	4%	16%
4	497,000	497,000	4	497,000	497,000	3%	3%	15%
4	497,000	497,000	4	497,000	497,000	2%	2%	15%
4	497,000	497,000	4	497,000	497,000	1%	1%	15%
4	497,000	497,000	4	497,000	497,000	0%	0%	15%
5	249,321	249,321	5	249,321	249,321	100%	100%	14%
5	249,321	249,321	5	249,321	249,321	98%	98%	14%
5	249,321	249,321	5	249,321	249,321	97%	97%	14%
5	249,321	249,321	5	249,321	249,321	95%	95%	14%
5	249,321	249,321	5	249,321	249,321	93%	93%	13%
5	249,321	249,321	5	249,321	249,321	92%	92%	13%
5	249,321	249,321	5	249,321	249,321	90%	90%	13%
5	249,321	249,321	5	249,321	249,321	88%	88%	13%
5	249,321	249,321	5	249,321	249,321	86%	86%	12%
5	249,321	249,321	5	249,321	249,321	85%	85%	12%
5	249,321	249,321	5	249,321	249,321	83%	83%	12%
5	249,321	249,321	5	249,321	249,321	81%	81%	12%
5	249,321	249,321	5	249,321	249,321	80%	80%	11%
5	249,321	249,321	5	249,321	249,321	78%	78%	11%
5	249,321	249,321	5	249,321	249,321	76%	76%	11%
5	249,321	249,321	5	249,321	249,321	75%	75%	11%
5	249,321	249,321	5	249,321	249,321	73%	73%	11%
5	249,321	249,321	5	249,321	249,321	71%	71%	10%
5	249,321	249,321	5	249,321	249,321	69%	69%	10%
5	249,321	249,321	5	249,321	249,321	68%	68%	10%
5	249,321	249,321	5	249,321	249,321	66%	66%	10%
5	249,321	249,321	5	249,321	249,321	64%	64%	9%

5	249,321	249,321	5	249,321	249,321	63%	63%	9%
5	249,321	249,321	5	249,321	249,321	61%	61%	9%
5	249,321	249,321	5	249,321	249,321	59%	59%	9%
5	249,321	353,767	5	249,321	353,767	58%	58%	8%
5	249,321	353,767	5	249,321	353,767	56%	56%	8%
5	249,321	421,350	5	249,321	421,350	54%	54%	8%
5	249,321	421,350	5	249,321	421,350	53%	53%	8%
5	249,321	421,350	5	249,321	421,350	51%	51%	7%
5	249,321	421,350	5	249,321	421,350	49%	49%	7%
5	249,321	421,350	5	249,321	421,350	47%	47%	7%
5	276,361	421,350	5	276,361	421,350	46%	46%	7%
5	353,767	421,350	5	353,767	421,350	44%	44%	6%
5	353,767	421,350	5	353,767	421,350	42%	42%	6%
5	353,767	421,350	5	353,767	421,350	41%	41%	6%
5	353,767	421,350	5	353,767	421,350	39%	39%	6%
5	353,767	421,350	5	353,767	421,350	37%	37%	5%
5	353,767	421,350	5	353,767	421,350	36%	36%	5%
5	353,767	421,350	5	353,767	421,350	34%	34%	5%
5	353,767	421,350	5	353,767	421,350	32%	32%	5%
5	353,767	421,350	5	353,767	421,350	31%	31%	4%
5	363,469	421,350	5	363,469	421,350	29%	29%	4%
5	363,469	421,350	5	363,469	421,350	27%	27%	4%
5	363,469	421,350	5	363,469	421,350	25%	25%	4%
5	363,469	421,350	5	363,469	421,350	24%	24%	3%
5	421,350	421,350	5	421,350	421,350	22%	22%	3%
5	421,350	421,350	5	421,350	421,350	20%	20%	3%
5	421,350	460,240	5	421,350	460,240	19%	19%	3%
5	421,350	497,000	5	421,350	497,000	17%	17%	2%
5	421,350	497,000	5	421,350	497,000	15%	15%	2%
5	421,350	497,000	5	421,350	497,000	14%	14%	2%
5	421,350	497,000	5	421,350	497,000	12%	12%	2%
5	460,240	497,000	5	460,240	497,000	10%	10%	1%
5	460,240	497,000	5	460,240	497,000	8%	8%	1%
5	460,240	497,000	5	460,240	497,000	7%	7%	1%
5	460,240	497,000	5	460,240	497,000	5%	5%	1%
5	460,240	497,000	5	460,240	497,000	3%	3%	0%
5	497,000	497,000	5	497,000	497,000	2%	2%	0%
5	497,000	497,000	5	497,000	497,000	0%	0%	0%

All Water Year Types				
Stages	WUA		Sorted by WYT	
PA20	COS5	PA20	WUA COS	WUA PA
100%	249,321	249,321	249,321	249,321
100%	249,321	249,321	249,321	249,321
100%	249,321	249,321	249,321	249,321
99%	249,321	249,321	249,321	249,321
99%	249,321	249,321	249,321	249,321
99%	249,321	249,321	249,321	249,321
99%	249,321	249,321	249,321	249,321
98%	249,321	249,321	249,321	249,321
98%	249,321	249,321	249,321	249,321
98%	249,321	249,321	249,321	249,321
98%	249,321	249,321	249,321	249,321
98%	249,321	249,321	249,321	249,321
97%	249,321	249,321	249,321	249,321
97%	249,321	249,321	249,321	249,321
97%	249,321	249,321	249,321	249,321
97%	249,321	249,321	249,321	249,321
96%	249,321	249,321	249,321	249,321
96%	249,321	249,321	249,321	249,321
96%	249,321	249,321	249,321	249,321
96%	249,321	249,321	249,321	249,321
95%	249,321	249,321	249,321	249,321
95%	249,321	249,321	249,321	249,321
95%	249,321	249,321	249,321	249,321
95%	249,321	249,321	249,321	249,321
94%	249,321	249,321	249,321	249,321
94%	249,321	249,321	249,321	249,321
94%	249,321	249,321	249,321	249,321
94%	249,321	249,321	249,321	249,321
94%	249,321	249,321	249,321	249,321
93%	249,321	249,321	249,321	249,321
93%	249,321	249,321	249,321	249,321
93%	249,321	249,321	249,321	249,321
93%	249,321	249,321	249,321	249,321
92%	249,321	249,321	249,321	249,321
92%	249,321	249,321	249,321	249,321
92%	249,321	249,321	249,321	249,321
92%	249,321	249,321	249,321	249,321
91%	249,321	249,321	249,321	249,321
91%	249,321	249,321	249,321	249,321
91%	249,321	249,321	249,321	249,321
91%	249,321	249,321	249,321	249,321
90%	249,321	249,321	249,321	249,321
90%	249,321	249,321	249,321	249,321
90%	249,321	249,321	249,321	249,321
90%	249,321	249,321	249,321	249,321















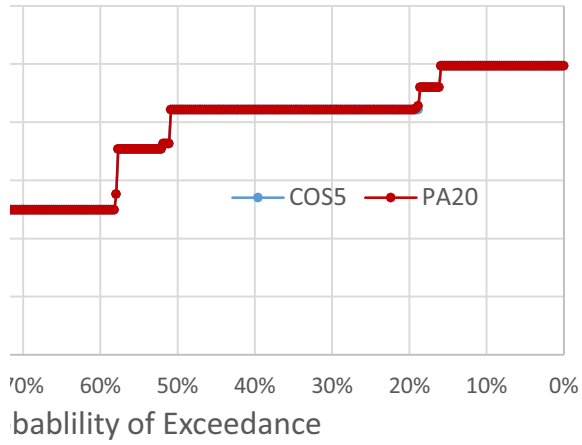




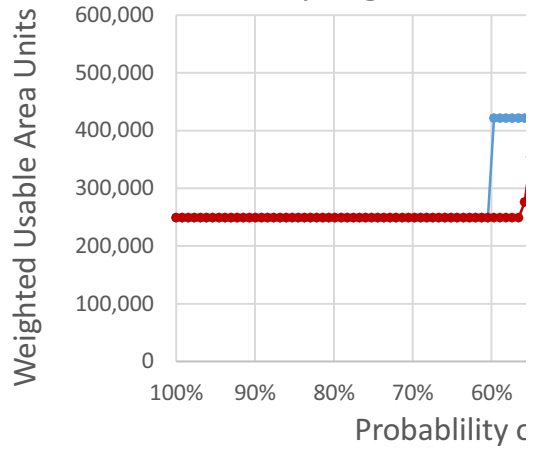




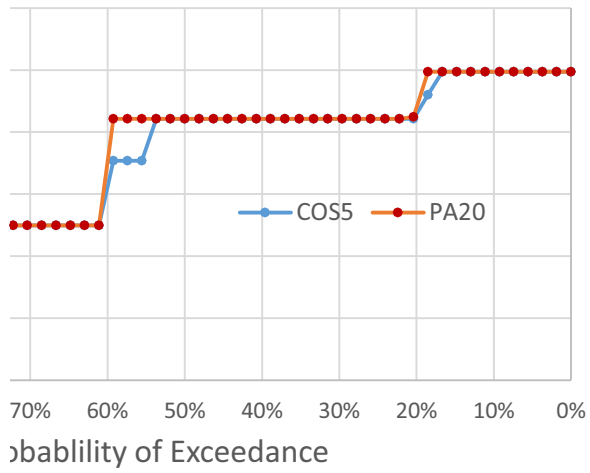
g-run Juveniles, All Years



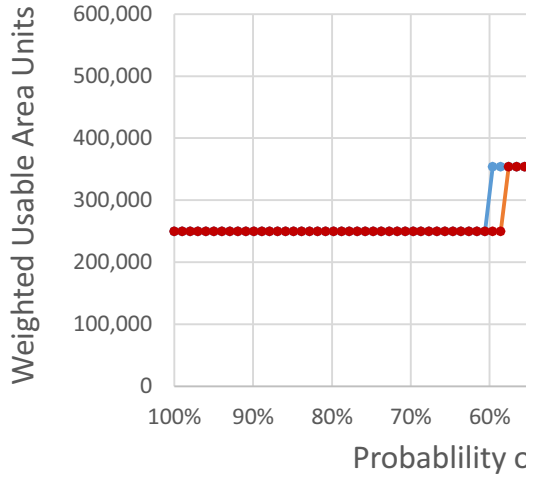
Spring-run Juver



Juveniles, Below Normal Years



Spring-run Juver













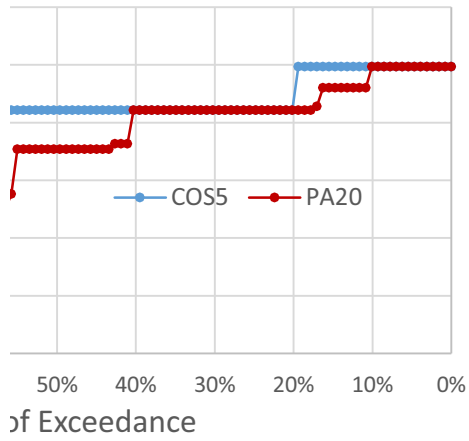




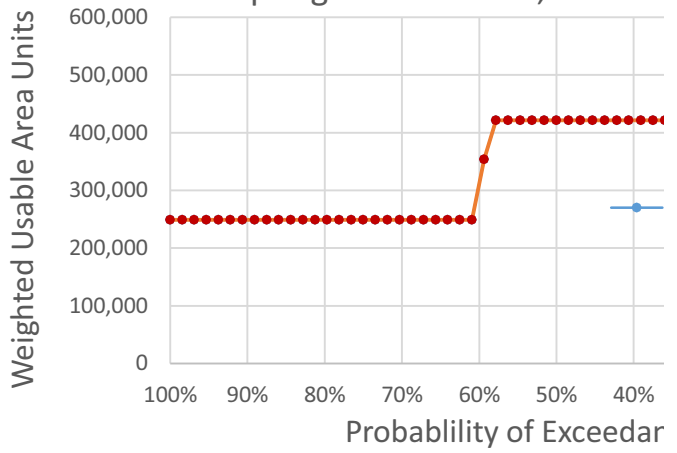




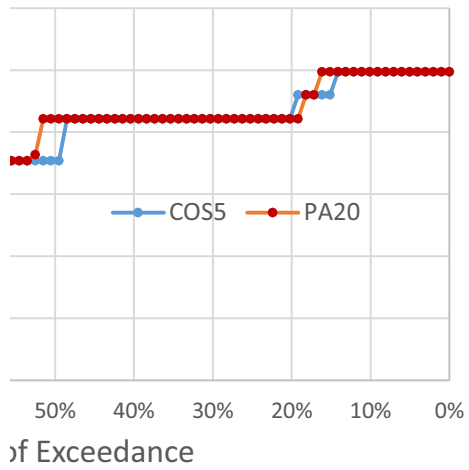
eniles, Wet Years



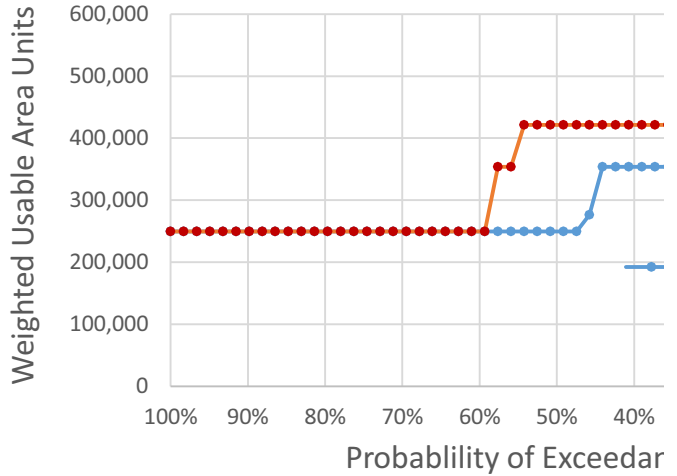
Spring-run Juveniles, Above I



eniles, Dry Years



Spring-run Juveniles, Criti













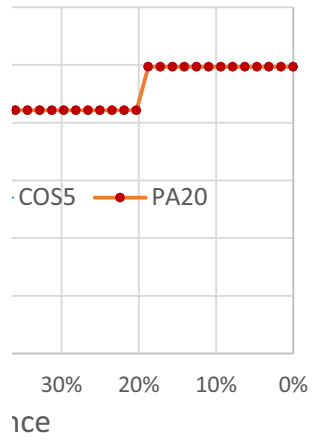




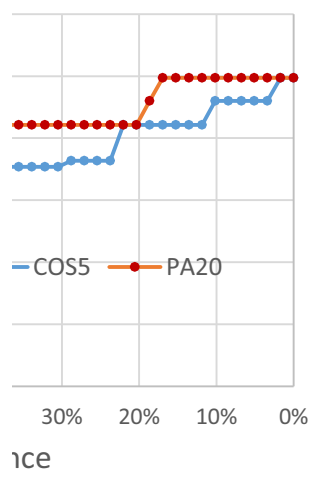




### Normal Years



### Cal Years



424,177

Sorted by WYT			Water Year Types Separately					
			WUA			Percentages		Perce
WYT	WUA COS	WUA PA	WYT	COS5	PA20	COS5	PA20	COS5
1	249,321	0	1	249,321	0	100%	100%	100%
1	249,321	0	1	249,321	0	99%	99%	100%
1	249,321	0	1	249,321	0	99%	99%	100%
1	249,321	181,084	1	249,321	181,084	98%	98%	99%
1	249,321	181,084	1	249,321	181,084	97%	97%	99%
1	249,321	181,084	1	249,321	181,084	97%	97%	99%
1	249,321	221,253	1	249,321	221,253	96%	96%	99%
1	249,321	249,321	1	249,321	249,321	95%	95%	99%
1	249,321	249,321	1	249,321	249,321	95%	95%	98%
1	249,321	249,321	1	249,321	249,321	94%	94%	98%
1	249,321	249,321	1	249,321	249,321	94%	94%	98%
1	249,321	249,321	1	249,321	249,321	93%	93%	98%
1	249,321	249,321	1	249,321	249,321	92%	92%	98%
1	249,321	249,321	1	249,321	249,321	92%	92%	97%
1	249,321	249,321	1	249,321	249,321	91%	91%	97%
1	249,321	249,321	1	249,321	249,321	90%	90%	97%
1	249,321	249,321	1	249,321	249,321	90%	90%	97%
1	249,321	249,321	1	249,321	249,321	89%	89%	97%
1	249,321	249,321	1	249,321	249,321	88%	88%	96%
1	249,321	249,321	1	249,321	249,321	88%	88%	96%
1	249,321	249,321	1	249,321	249,321	87%	87%	96%
1	249,321	249,321	1	249,321	249,321	86%	86%	96%
1	249,321	249,321	1	249,321	249,321	86%	86%	96%
1	249,321	249,321	1	249,321	249,321	85%	85%	95%
1	249,321	249,321	1	249,321	249,321	85%	85%	95%
1	249,321	249,321	1	249,321	249,321	84%	84%	95%
1	249,321	249,321	1	249,321	249,321	83%	83%	95%
1	249,321	249,321	1	249,321	249,321	83%	83%	95%
1	249,321	249,321	1	249,321	249,321	82%	82%	94%
1	249,321	249,321	1	249,321	249,321	81%	81%	94%
1	249,321	249,321	1	249,321	249,321	81%	81%	94%
1	249,321	249,321	1	249,321	249,321	80%	80%	94%
1	249,321	249,321	1	249,321	249,321	79%	79%	93%
1	249,321	249,321	1	249,321	249,321	79%	79%	93%
1	249,321	249,321	1	249,321	249,321	78%	78%	93%
1	249,321	249,321	1	249,321	249,321	77%	77%	93%
1	249,321	249,321	1	249,321	249,321	77%	77%	93%
1	249,321	249,321	1	249,321	249,321	76%	76%	92%
1	249,321	249,321	1	249,321	249,321	75%	75%	92%
1	249,321	249,321	1	249,321	249,321	75%	75%	92%
1	249,321	249,321	1	249,321	249,321	74%	74%	92%
1	249,321	249,321	1	249,321	249,321	74%	74%	92%
1	249,321	249,321	1	249,321	249,321	73%	73%	91%

1	249,321	249,321	1	249,321	249,321	72%	72%	91%
1	249,321	249,321	1	249,321	249,321	72%	72%	91%
1	249,321	249,321	1	249,321	249,321	71%	71%	91%
1	249,321	249,321	1	249,321	249,321	70%	70%	91%
1	249,321	249,321	1	249,321	249,321	70%	70%	90%
1	249,321	249,321	1	249,321	249,321	69%	69%	90%
1	249,321	249,321	1	249,321	249,321	68%	68%	90%
1	249,321	249,321	1	249,321	249,321	68%	68%	90%
1	249,321	249,321	1	249,321	249,321	67%	67%	90%
1	353,767	249,321	1	353,767	249,321	66%	66%	89%
1	353,767	249,321	1	353,767	249,321	66%	66%	89%
1	353,767	249,321	1	353,767	249,321	65%	65%	89%
1	353,767	249,321	1	353,767	249,321	65%	65%	89%
1	353,767	249,321	1	353,767	249,321	64%	64%	89%
1	353,767	249,321	1	353,767	249,321	63%	63%	88%
1	353,767	249,321	1	353,767	249,321	63%	63%	88%
1	353,767	276,361	1	353,767	276,361	62%	62%	88%
1	353,767	276,361	1	353,767	276,361	61%	61%	88%
1	353,767	353,767	1	353,767	353,767	61%	61%	88%
1	353,767	353,767	1	353,767	353,767	60%	60%	87%
1	353,767	353,767	1	353,767	353,767	59%	59%	87%
1	353,767	353,767	1	353,767	353,767	59%	59%	87%
1	353,767	353,767	1	353,767	353,767	58%	58%	87%
1	353,767	353,767	1	353,767	353,767	57%	57%	87%
1	353,767	353,767	1	353,767	353,767	57%	57%	86%
1	353,767	353,767	1	353,767	353,767	56%	56%	86%
1	353,767	353,767	1	353,767	353,767	55%	55%	86%
1	353,767	353,767	1	353,767	353,767	55%	55%	86%
1	353,767	353,767	1	353,767	353,767	54%	54%	86%
1	353,767	353,767	1	353,767	353,767	54%	54%	85%
1	353,767	353,767	1	353,767	353,767	53%	53%	85%
1	353,767	353,767	1	353,767	353,767	52%	52%	85%
1	353,767	353,767	1	353,767	353,767	52%	52%	85%
1	353,767	353,767	1	353,767	353,767	51%	51%	85%
1	353,767	353,767	1	353,767	353,767	50%	50%	84%
1	421,350	353,767	1	421,350	353,767	50%	50%	84%
1	421,350	353,767	1	421,350	353,767	49%	49%	84%
1	421,350	353,767	1	421,350	353,767	48%	48%	84%
1	421,350	353,767	1	421,350	353,767	48%	48%	84%
1	421,350	353,767	1	421,350	353,767	47%	47%	83%
1	421,350	353,767	1	421,350	353,767	46%	46%	83%
1	421,350	353,767	1	421,350	353,767	46%	46%	83%
1	421,350	353,767	1	421,350	353,767	45%	45%	83%
1	421,350	353,767	1	421,350	353,767	45%	45%	82%
1	421,350	353,767	1	421,350	353,767	44%	44%	82%
1	421,350	353,767	1	421,350	353,767	43%	43%	82%
1	421,350	353,767	1	421,350	353,767	43%	43%	82%



1	421,350	421,350	1	421,350	421,350	12%	12%	72%
1	421,350	421,350	1	421,350	421,350	11%	11%	72%
1	421,350	421,350	1	421,350	421,350	10%	10%	72%
1	421,350	421,350	1	421,350	421,350	10%	10%	71%
1	421,350	421,350	1	421,350	421,350	9%	9%	71%
1	421,350	421,350	1	421,350	421,350	8%	8%	71%
1	421,350	421,350	1	421,350	421,350	8%	8%	71%
1	421,350	421,350	1	421,350	421,350	7%	7%	71%
1	421,350	421,350	1	421,350	421,350	6%	6%	70%
1	421,350	421,350	1	421,350	421,350	6%	6%	70%
1	421,350	421,350	1	421,350	421,350	5%	5%	70%
1	421,350	421,350	1	421,350	421,350	5%	5%	70%
1	421,350	421,350	1	421,350	421,350	4%	4%	70%
1	421,350	421,350	1	421,350	421,350	3%	3%	69%
1	421,350	421,350	1	421,350	421,350	3%	3%	69%
1	421,350	421,350	1	421,350	421,350	2%	2%	69%
1	421,350	421,350	1	421,350	421,350	1%	1%	69%
1	421,350	421,350	1	421,350	421,350	1%	1%	69%
1	421,350	421,350	1	421,350	421,350	0%	0%	68%
2	181,084	249,321	2	181,084	249,321	100%	100%	68%
2	221,253	249,321	2	221,253	249,321	99%	99%	68%
2	249,321	249,321	2	249,321	249,321	97%	97%	68%
2	249,321	249,321	2	249,321	249,321	96%	96%	68%
2	249,321	249,321	2	249,321	249,321	95%	95%	67%
2	249,321	249,321	2	249,321	249,321	94%	94%	67%
2	249,321	249,321	2	249,321	249,321	92%	92%	67%
2	249,321	249,321	2	249,321	249,321	91%	91%	67%
2	249,321	249,321	2	249,321	249,321	90%	90%	67%
2	249,321	249,321	2	249,321	249,321	88%	88%	66%
2	249,321	249,321	2	249,321	249,321	87%	87%	66%
2	249,321	249,321	2	249,321	249,321	86%	86%	66%
2	249,321	249,321	2	249,321	249,321	84%	84%	66%
2	249,321	249,321	2	249,321	249,321	83%	83%	66%
2	249,321	249,321	2	249,321	249,321	82%	82%	65%
2	249,321	249,321	2	249,321	249,321	81%	81%	65%
2	249,321	249,321	2	249,321	249,321	79%	79%	65%
2	249,321	249,321	2	249,321	249,321	78%	78%	65%
2	249,321	249,321	2	249,321	249,321	77%	77%	65%
2	249,321	249,321	2	249,321	249,321	75%	75%	64%
2	249,321	249,321	2	249,321	249,321	74%	74%	64%
2	249,321	249,321	2	249,321	249,321	73%	73%	64%
2	249,321	249,321	2	249,321	249,321	71%	71%	64%
2	249,321	249,321	2	249,321	249,321	70%	70%	64%
2	249,321	249,321	2	249,321	249,321	69%	69%	63%
2	249,321	249,321	2	249,321	249,321	68%	68%	63%
2	249,321	353,767	2	249,321	353,767	66%	66%	63%
2	249,321	353,767	2	249,321	353,767	65%	65%	63%

2	353,767	353,767	2	353,767	353,767	64%	64%	63%
2	353,767	353,767	2	353,767	353,767	62%	62%	62%
2	353,767	353,767	2	353,767	353,767	61%	61%	62%
2	353,767	353,767	2	353,767	353,767	60%	60%	62%
2	353,767	353,767	2	353,767	353,767	58%	58%	62%
2	353,767	353,767	2	353,767	353,767	57%	57%	62%
2	353,767	353,767	2	353,767	353,767	56%	56%	61%
2	353,767	353,767	2	353,767	353,767	55%	55%	61%
2	353,767	353,767	2	353,767	353,767	53%	53%	61%
2	353,767	353,767	2	353,767	353,767	52%	52%	61%
2	353,767	353,767	2	353,767	353,767	51%	51%	60%
2	353,767	421,350	2	353,767	421,350	49%	49%	60%
2	353,767	421,350	2	353,767	421,350	48%	48%	60%
2	353,767	421,350	2	353,767	421,350	47%	47%	60%
2	353,767	421,350	2	353,767	421,350	45%	45%	60%
2	353,767	421,350	2	353,767	421,350	44%	44%	59%
2	353,767	421,350	2	353,767	421,350	43%	43%	59%
2	353,767	421,350	2	353,767	421,350	42%	42%	59%
2	353,767	421,350	2	353,767	421,350	40%	40%	59%
2	353,767	421,350	2	353,767	421,350	39%	39%	59%
2	421,350	421,350	2	421,350	421,350	38%	38%	58%
2	421,350	421,350	2	421,350	421,350	36%	36%	58%
2	421,350	421,350	2	421,350	421,350	35%	35%	58%
2	421,350	421,350	2	421,350	421,350	34%	34%	58%
2	421,350	421,350	2	421,350	421,350	32%	32%	58%
2	421,350	421,350	2	421,350	421,350	31%	31%	57%
2	421,350	421,350	2	421,350	421,350	30%	30%	57%
2	421,350	421,350	2	421,350	421,350	29%	29%	57%
2	421,350	421,350	2	421,350	421,350	27%	27%	57%
2	421,350	421,350	2	421,350	421,350	26%	26%	57%
2	421,350	421,350	2	421,350	421,350	25%	25%	56%
2	421,350	421,350	2	421,350	421,350	23%	23%	56%
2	421,350	421,350	2	421,350	421,350	22%	22%	56%
2	421,350	421,350	2	421,350	421,350	21%	21%	56%
2	421,350	421,350	2	421,350	421,350	19%	19%	56%
2	421,350	421,350	2	421,350	421,350	18%	18%	55%
2	421,350	421,350	2	421,350	421,350	17%	17%	55%
2	421,350	421,350	2	421,350	421,350	16%	16%	55%
2	421,350	421,350	2	421,350	421,350	14%	14%	55%
2	421,350	421,350	2	421,350	421,350	13%	13%	55%
2	421,350	421,350	2	421,350	421,350	12%	12%	54%
2	421,350	421,350	2	421,350	421,350	10%	10%	54%
2	421,350	421,350	2	421,350	421,350	9%	9%	54%
2	421,350	421,350	2	421,350	421,350	8%	8%	54%
2	421,350	421,350	2	421,350	421,350	6%	6%	54%
2	421,350	421,350	2	421,350	421,350	5%	5%	53%
2	421,350	421,350	2	421,350	421,350	4%	4%	53%



2	421,350	421,350	2	421,350	421,350	3%	3%	53%
2	421,350	421,350	2	421,350	421,350	1%	1%	53%
2	421,350	421,350	2	421,350	421,350	0%	0%	53%
3	249,321	249,321	3	249,321	249,321	100%	100%	52%
3	249,321	249,321	3	249,321	249,321	98%	98%	52%
3	249,321	249,321	3	249,321	249,321	97%	97%	52%
3	249,321	249,321	3	249,321	249,321	95%	95%	52%
3	249,321	249,321	3	249,321	249,321	94%	94%	52%
3	249,321	249,321	3	249,321	249,321	92%	92%	51%
3	249,321	249,321	3	249,321	249,321	91%	91%	51%
3	249,321	249,321	3	249,321	249,321	89%	89%	51%
3	249,321	249,321	3	249,321	249,321	88%	88%	51%
3	249,321	249,321	3	249,321	249,321	86%	86%	51%
3	249,321	249,321	3	249,321	249,321	85%	85%	50%
3	249,321	249,321	3	249,321	249,321	83%	83%	50%
3	249,321	249,321	3	249,321	249,321	82%	82%	50%
3	249,321	249,321	3	249,321	249,321	80%	80%	50%
3	249,321	249,321	3	249,321	249,321	78%	78%	49%
3	249,321	249,321	3	249,321	249,321	77%	77%	49%
3	249,321	249,321	3	249,321	249,321	75%	75%	49%
3	249,321	249,321	3	249,321	249,321	74%	74%	49%
3	249,321	249,321	3	249,321	249,321	72%	72%	49%
3	249,321	249,321	3	249,321	249,321	71%	71%	48%
3	249,321	249,321	3	249,321	249,321	69%	69%	48%
3	249,321	249,321	3	249,321	249,321	68%	68%	48%
3	353,767	353,767	3	353,767	353,767	66%	66%	48%
3	353,767	353,767	3	353,767	353,767	65%	65%	48%
3	353,767	353,767	3	353,767	353,767	63%	63%	47%
3	353,767	353,767	3	353,767	353,767	62%	62%	47%
3	353,767	353,767	3	353,767	353,767	60%	60%	47%
3	353,767	353,767	3	353,767	353,767	58%	58%	47%
3	353,767	353,767	3	353,767	353,767	57%	57%	47%
3	353,767	353,767	3	353,767	353,767	55%	55%	46%
3	353,767	353,767	3	353,767	353,767	54%	54%	46%
3	353,767	353,767	3	353,767	353,767	52%	52%	46%
3	353,767	353,767	3	353,767	353,767	51%	51%	46%
3	353,767	421,350	3	353,767	421,350	49%	49%	46%
3	353,767	421,350	3	353,767	421,350	48%	48%	45%
3	353,767	421,350	3	353,767	421,350	46%	46%	45%
3	421,350	421,350	3	421,350	421,350	45%	45%	45%
3	421,350	421,350	3	421,350	421,350	43%	43%	45%
3	421,350	421,350	3	421,350	421,350	42%	42%	45%
3	421,350	421,350	3	421,350	421,350	40%	40%	44%
3	421,350	421,350	3	421,350	421,350	38%	38%	44%
3	421,350	421,350	3	421,350	421,350	37%	37%	44%
3	421,350	421,350	3	421,350	421,350	35%	35%	44%
3	421,350	421,350	3	421,350	421,350	34%	34%	44%

3	421,350	421,350	3	421,350	421,350	32%	32%	43%
3	421,350	421,350	3	421,350	421,350	31%	31%	43%
3	421,350	421,350	3	421,350	421,350	29%	29%	43%
3	421,350	421,350	3	421,350	421,350	28%	28%	43%
3	421,350	421,350	3	421,350	421,350	26%	26%	43%
3	421,350	421,350	3	421,350	421,350	25%	25%	42%
3	421,350	421,350	3	421,350	421,350	23%	23%	42%
3	421,350	421,350	3	421,350	421,350	22%	22%	42%
3	421,350	421,350	3	421,350	421,350	20%	20%	42%
3	421,350	421,350	3	421,350	421,350	18%	18%	42%
3	421,350	421,350	3	421,350	421,350	17%	17%	41%
3	421,350	421,350	3	421,350	421,350	15%	15%	41%
3	421,350	421,350	3	421,350	421,350	14%	14%	41%
3	421,350	421,350	3	421,350	421,350	12%	12%	41%
3	421,350	421,350	3	421,350	421,350	11%	11%	41%
3	421,350	421,350	3	421,350	421,350	9%	9%	40%
3	421,350	421,350	3	421,350	421,350	8%	8%	40%
3	421,350	421,350	3	421,350	421,350	6%	6%	40%
3	421,350	421,350	3	421,350	421,350	5%	5%	40%
3	421,350	421,350	3	421,350	421,350	3%	3%	40%
3	421,350	421,350	3	421,350	421,350	2%	2%	39%
3	421,350	424,177	3	421,350	424,177	0%	0%	39%
4	0	181,084	4	0	181,084	100%	100%	39%
4	181,084	181,084	4	181,084	181,084	99%	99%	39%
4	221,253	221,253	4	221,253	221,253	98%	98%	38%
4	249,321	249,321	4	249,321	249,321	97%	97%	38%
4	249,321	249,321	4	249,321	249,321	97%	97%	38%
4	249,321	249,321	4	249,321	249,321	96%	96%	38%
4	249,321	249,321	4	249,321	249,321	95%	95%	38%
4	249,321	249,321	4	249,321	249,321	94%	94%	37%
4	249,321	249,321	4	249,321	249,321	93%	93%	37%
4	249,321	249,321	4	249,321	249,321	92%	92%	37%
4	249,321	249,321	4	249,321	249,321	92%	92%	37%
4	249,321	249,321	4	249,321	249,321	91%	91%	37%
4	249,321	249,321	4	249,321	249,321	90%	90%	36%
4	249,321	249,321	4	249,321	249,321	89%	89%	36%
4	249,321	249,321	4	249,321	249,321	88%	88%	36%
4	249,321	249,321	4	249,321	249,321	87%	87%	36%
4	249,321	249,321	4	249,321	249,321	87%	87%	36%
4	249,321	249,321	4	249,321	249,321	86%	86%	35%
4	249,321	249,321	4	249,321	249,321	85%	85%	35%
4	249,321	249,321	4	249,321	249,321	84%	84%	35%
4	249,321	249,321	4	249,321	249,321	83%	83%	35%
4	249,321	249,321	4	249,321	249,321	82%	82%	35%
4	249,321	249,321	4	249,321	249,321	82%	82%	34%
4	249,321	249,321	4	249,321	249,321	81%	81%	34%
4	249,321	249,321	4	249,321	249,321	80%	80%	34%

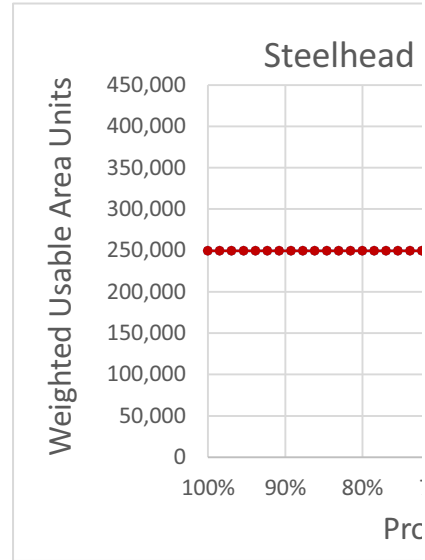
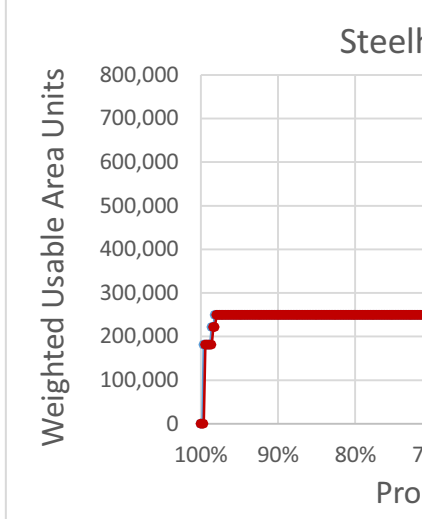
4	249,321	249,321	4	249,321	249,321	79%	79%	34%
4	249,321	249,321	4	249,321	249,321	78%	78%	34%
4	249,321	249,321	4	249,321	249,321	77%	77%	33%
4	249,321	249,321	4	249,321	249,321	76%	76%	33%
4	249,321	249,321	4	249,321	249,321	76%	76%	33%
4	249,321	249,321	4	249,321	249,321	75%	75%	33%
4	249,321	249,321	4	249,321	249,321	74%	74%	33%
4	249,321	249,321	4	249,321	249,321	73%	73%	32%
4	249,321	249,321	4	249,321	249,321	72%	72%	32%
4	249,321	249,321	4	249,321	249,321	71%	71%	32%
4	249,321	249,321	4	249,321	249,321	71%	71%	32%
4	249,321	249,321	4	249,321	249,321	70%	70%	32%
4	249,321	249,321	4	249,321	249,321	69%	69%	31%
4	249,321	249,321	4	249,321	249,321	68%	68%	31%
4	249,321	249,321	4	249,321	249,321	67%	67%	31%
4	249,321	249,321	4	249,321	249,321	66%	66%	31%
4	249,321	249,321	4	249,321	249,321	66%	66%	31%
4	249,321	249,321	4	249,321	249,321	65%	65%	30%
4	353,767	353,767	4	353,767	353,767	64%	64%	30%
4	353,767	353,767	4	353,767	353,767	63%	63%	30%
4	353,767	353,767	4	353,767	353,767	62%	62%	30%
4	353,767	353,767	4	353,767	353,767	61%	61%	30%
4	353,767	353,767	4	353,767	353,767	61%	61%	29%
4	353,767	353,767	4	353,767	353,767	60%	60%	29%
4	353,767	353,767	4	353,767	353,767	59%	59%	29%
4	353,767	353,767	4	353,767	353,767	58%	58%	29%
4	353,767	353,767	4	353,767	353,767	57%	57%	29%
4	353,767	353,767	4	353,767	353,767	56%	56%	28%
4	353,767	353,767	4	353,767	353,767	55%	55%	28%
4	353,767	353,767	4	353,767	353,767	55%	55%	28%
4	353,767	353,767	4	353,767	353,767	54%	54%	28%
4	353,767	353,767	4	353,767	353,767	53%	53%	27%
4	353,767	353,767	4	353,767	353,767	52%	52%	27%
4	353,767	353,767	4	353,767	353,767	51%	51%	27%
4	353,767	353,767	4	353,767	353,767	50%	50%	27%
4	353,767	353,767	4	353,767	353,767	50%	50%	27%
4	353,767	353,767	4	353,767	353,767	49%	49%	26%
4	353,767	353,767	4	353,767	353,767	48%	48%	26%
4	353,767	353,767	4	353,767	353,767	47%	47%	26%
4	353,767	353,767	4	353,767	353,767	46%	46%	26%
4	353,767	353,767	4	353,767	353,767	45%	45%	26%
4	353,767	353,767	4	353,767	353,767	45%	45%	25%
4	353,767	353,767	4	353,767	353,767	44%	44%	25%
4	353,767	353,767	4	353,767	353,767	43%	43%	25%
4	353,767	421,350	4	353,767	421,350	42%	42%	25%
4	353,767	421,350	4	353,767	421,350	41%	41%	25%
4	353,767	421,350	4	353,767	421,350	40%	40%	24%

4	353,767	421,350	4	353,767	421,350	39%	39%	24%
4	353,767	421,350	4	353,767	421,350	39%	39%	24%
4	353,767	421,350	4	353,767	421,350	38%	38%	24%
4	421,350	421,350	4	421,350	421,350	37%	37%	24%
4	421,350	421,350	4	421,350	421,350	36%	36%	23%
4	421,350	421,350	4	421,350	421,350	35%	35%	23%
4	421,350	421,350	4	421,350	421,350	34%	34%	23%
4	421,350	421,350	4	421,350	421,350	34%	34%	23%
4	421,350	421,350	4	421,350	421,350	33%	33%	23%
4	421,350	421,350	4	421,350	421,350	32%	32%	22%
4	421,350	421,350	4	421,350	421,350	31%	31%	22%
4	421,350	421,350	4	421,350	421,350	30%	30%	22%
4	421,350	421,350	4	421,350	421,350	29%	29%	22%
4	421,350	421,350	4	421,350	421,350	29%	29%	22%
4	421,350	421,350	4	421,350	421,350	28%	28%	21%
4	421,350	421,350	4	421,350	421,350	27%	27%	21%
4	421,350	421,350	4	421,350	421,350	26%	26%	21%
4	421,350	421,350	4	421,350	421,350	25%	25%	21%
4	421,350	421,350	4	421,350	421,350	24%	24%	21%
4	421,350	421,350	4	421,350	421,350	24%	24%	20%
4	421,350	421,350	4	421,350	421,350	23%	23%	20%
4	421,350	421,350	4	421,350	421,350	22%	22%	20%
4	421,350	421,350	4	421,350	421,350	21%	21%	20%
4	421,350	421,350	4	421,350	421,350	20%	20%	20%
4	421,350	421,350	4	421,350	421,350	19%	19%	19%
4	421,350	421,350	4	421,350	421,350	18%	18%	19%
4	421,350	421,350	4	421,350	421,350	18%	18%	19%
4	421,350	421,350	4	421,350	421,350	17%	17%	19%
4	421,350	421,350	4	421,350	421,350	16%	16%	19%
4	421,350	421,350	4	421,350	421,350	15%	15%	18%
4	421,350	421,350	4	421,350	421,350	14%	14%	18%
4	421,350	421,350	4	421,350	421,350	13%	13%	18%
4	421,350	421,350	4	421,350	421,350	13%	13%	18%
4	421,350	421,350	4	421,350	421,350	12%	12%	18%
4	421,350	421,350	4	421,350	421,350	11%	11%	17%
4	421,350	421,350	4	421,350	421,350	10%	10%	17%
4	421,350	421,350	4	421,350	421,350	9%	9%	17%
4	421,350	421,350	4	421,350	421,350	8%	8%	17%
4	421,350	421,350	4	421,350	421,350	8%	8%	16%
4	421,350	421,350	4	421,350	421,350	7%	7%	16%
4	421,350	421,350	4	421,350	421,350	6%	6%	16%
4	421,350	421,350	4	421,350	421,350	5%	5%	16%
4	421,350	421,350	4	421,350	421,350	4%	4%	16%
4	421,350	421,350	4	421,350	421,350	3%	3%	15%
4	421,350	421,350	4	421,350	421,350	3%	3%	15%
4	421,350	421,350	4	421,350	421,350	2%	2%	15%
4	421,350	421,350	4	421,350	421,350	1%	1%	15%

4	421,350	421,350	4	421,350	421,350	0%	0%	15%
5	0	249,321	5	0	249,321	100%	100%	14%
5	181,084	249,321	5	181,084	249,321	99%	99%	14%
5	181,084	249,321	5	181,084	249,321	97%	97%	14%
5	181,084	249,321	5	181,084	249,321	96%	96%	14%
5	249,321	249,321	5	249,321	249,321	94%	94%	14%
5	249,321	249,321	5	249,321	249,321	93%	93%	13%
5	249,321	249,321	5	249,321	249,321	92%	92%	13%
5	249,321	249,321	5	249,321	249,321	90%	90%	13%
5	249,321	249,321	5	249,321	249,321	89%	89%	13%
5	249,321	249,321	5	249,321	249,321	87%	87%	13%
5	249,321	249,321	5	249,321	249,321	86%	86%	12%
5	249,321	249,321	5	249,321	249,321	85%	85%	12%
5	249,321	249,321	5	249,321	249,321	83%	83%	12%
5	249,321	249,321	5	249,321	249,321	82%	82%	12%
5	249,321	249,321	5	249,321	249,321	80%	80%	12%
5	249,321	249,321	5	249,321	249,321	79%	79%	11%
5	249,321	249,321	5	249,321	249,321	77%	77%	11%
5	249,321	249,321	5	249,321	249,321	76%	76%	11%
5	249,321	249,321	5	249,321	249,321	75%	75%	11%
5	249,321	249,321	5	249,321	249,321	73%	73%	11%
5	249,321	249,321	5	249,321	249,321	72%	72%	10%
5	249,321	249,321	5	249,321	249,321	70%	70%	10%
5	249,321	249,321	5	249,321	249,321	69%	69%	10%
5	249,321	249,321	5	249,321	249,321	68%	68%	10%
5	249,321	353,767	5	249,321	353,767	66%	66%	10%
5	249,321	353,767	5	249,321	353,767	65%	65%	9%
5	249,321	353,767	5	249,321	353,767	63%	63%	9%
5	249,321	353,767	5	249,321	353,767	62%	62%	9%
5	276,361	353,767	5	276,361	353,767	61%	61%	9%
5	276,361	353,767	5	276,361	353,767	59%	59%	9%
5	353,767	353,767	5	353,767	353,767	58%	58%	8%
5	353,767	353,767	5	353,767	353,767	56%	56%	8%
5	353,767	353,767	5	353,767	353,767	55%	55%	8%
5	353,767	353,767	5	353,767	353,767	54%	54%	8%
5	353,767	353,767	5	353,767	353,767	52%	52%	8%
5	353,767	353,767	5	353,767	353,767	51%	51%	7%
5	353,767	353,767	5	353,767	353,767	49%	49%	7%
5	353,767	353,767	5	353,767	353,767	48%	48%	7%
5	353,767	353,767	5	353,767	353,767	46%	46%	7%
5	353,767	353,767	5	353,767	353,767	45%	45%	7%
5	353,767	353,767	5	353,767	353,767	44%	44%	6%
5	353,767	353,767	5	353,767	353,767	42%	42%	6%
5	353,767	421,350	5	353,767	421,350	41%	41%	6%
5	353,767	421,350	5	353,767	421,350	39%	39%	6%
5	353,767	421,350	5	353,767	421,350	38%	38%	5%
5	353,767	421,350	5	353,767	421,350	37%	37%	5%

5	353,767	421,350	5	353,767	421,350	35%	35%	5%
5	353,767	421,350	5	353,767	421,350	34%	34%	5%
5	353,767	421,350	5	353,767	421,350	32%	32%	5%
5	353,767	421,350	5	353,767	421,350	31%	31%	4%
5	353,767	421,350	5	353,767	421,350	30%	30%	4%
5	353,767	421,350	5	353,767	421,350	28%	28%	4%
5	353,767	421,350	5	353,767	421,350	27%	27%	4%
5	353,767	421,350	5	353,767	421,350	25%	25%	4%
5	353,767	421,350	5	353,767	421,350	24%	24%	3%
5	353,767	421,350	5	353,767	421,350	23%	23%	3%
5	353,767	421,350	5	353,767	421,350	21%	21%	3%
5	421,350	421,350	5	421,350	421,350	20%	20%	3%
5	421,350	421,350	5	421,350	421,350	18%	18%	3%
5	421,350	421,350	5	421,350	421,350	17%	17%	2%
5	421,350	421,350	5	421,350	421,350	15%	15%	2%
5	421,350	421,350	5	421,350	421,350	14%	14%	2%
5	421,350	421,350	5	421,350	421,350	13%	13%	2%
5	421,350	421,350	5	421,350	421,350	11%	11%	2%
5	421,350	421,350	5	421,350	421,350	10%	10%	1%
5	421,350	421,350	5	421,350	421,350	8%	8%	1%
5	421,350	421,350	5	421,350	421,350	7%	7%	1%
5	421,350	421,350	5	421,350	421,350	6%	6%	1%
5	421,350	421,350	5	421,350	421,350	4%	4%	1%
5	421,350	421,350	5	421,350	421,350	3%	3%	0%
5	421,350	421,350	5	421,350	421,350	1%	1%	0%
5	421,350	703,629	5	421,350	703,629	0%	0%	0%

All Water Year Types				
Stages	WUA		Sorted by WYT	
PA20	COS5	PA20	WUA COS	WUA PA
100%	0	0	0	0
100%	0	0	0	0
100%	181,084	0	181,084	0
99%	181,084	181,084	181,084	181,084
99%	181,084	181,084	181,084	181,084
99%	181,084	181,084	181,084	181,084
99%	181,084	181,084	181,084	181,084
99%	221,253	181,084	221,253	181,084
98%	221,253	221,253	221,253	221,253
98%	249,321	221,253	249,321	221,253
98%	249,321	249,321	249,321	249,321
98%	249,321	249,321	249,321	249,321
98%	249,321	249,321	249,321	249,321
98%	249,321	249,321	249,321	249,321
97%	249,321	249,321	249,321	249,321
97%	249,321	249,321	249,321	249,321
97%	249,321	249,321	249,321	249,321
97%	249,321	249,321	249,321	249,321
97%	249,321	249,321	249,321	249,321
96%	249,321	249,321	249,321	249,321
96%	249,321	249,321	249,321	249,321
96%	249,321	249,321	249,321	249,321
96%	249,321	249,321	249,321	249,321
96%	249,321	249,321	249,321	249,321
96%	249,321	249,321	249,321	249,321
95%	249,321	249,321	249,321	249,321
95%	249,321	249,321	249,321	249,321
95%	249,321	249,321	249,321	249,321
95%	249,321	249,321	249,321	249,321
95%	249,321	249,321	249,321	249,321
94%	249,321	249,321	249,321	249,321
94%	249,321	249,321	249,321	249,321
94%	249,321	249,321	249,321	249,321
94%	249,321	249,321	249,321	249,321
93%	249,321	249,321	249,321	249,321
93%	249,321	249,321	249,321	249,321
93%	249,321	249,321	249,321	249,321
93%	249,321	249,321	249,321	249,321
93%	249,321	249,321	249,321	249,321
92%	249,321	249,321	249,321	249,321
92%	249,321	249,321	249,321	249,321
92%	249,321	249,321	249,321	249,321
92%	249,321	249,321	249,321	249,321
91%	249,321	249,321	249,321	249,321



















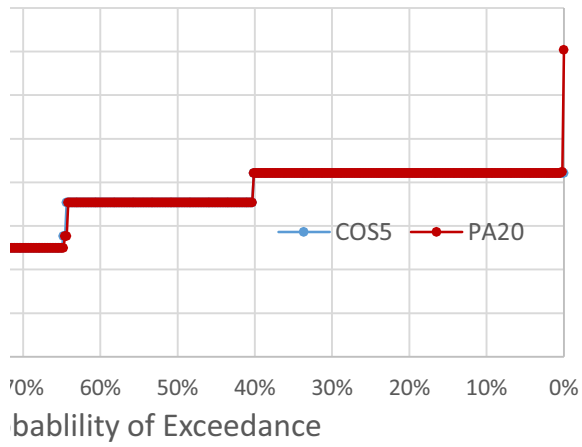




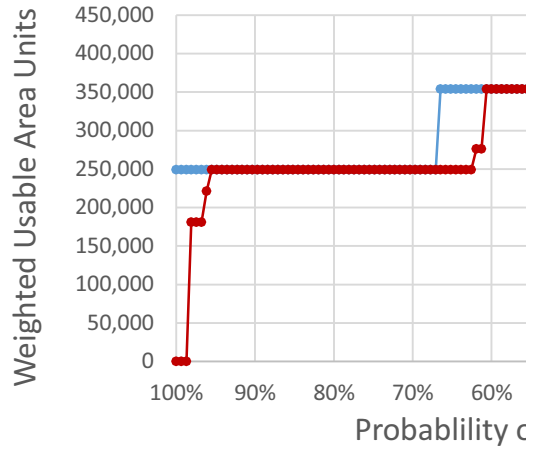


5%	421,350	421,350	421,350	421,350
5%	421,350	421,350	421,350	421,350
5%	421,350	421,350	421,350	421,350
4%	421,350	421,350	421,350	421,350
4%	421,350	421,350	421,350	421,350
4%	421,350	421,350	421,350	421,350
4%	421,350	421,350	421,350	421,350
4%	421,350	421,350	421,350	421,350
3%	421,350	421,350	421,350	421,350
3%	421,350	421,350	421,350	421,350
3%	421,350	421,350	421,350	421,350
3%	421,350	421,350	421,350	421,350
3%	421,350	421,350	421,350	421,350
2%	421,350	421,350	421,350	421,350
2%	421,350	421,350	421,350	421,350
2%	421,350	421,350	421,350	421,350
2%	421,350	421,350	421,350	421,350
2%	421,350	421,350	421,350	421,350
1%	421,350	421,350	421,350	421,350
1%	421,350	421,350	421,350	421,350
1%	421,350	421,350	421,350	421,350
1%	421,350	421,350	421,350	421,350
1%	421,350	421,350	421,350	421,350
0%	421,350	421,350	421,350	421,350
0%	421,350	424,177	421,350	424,177
0%	421,350	703,629	421,350	703,629

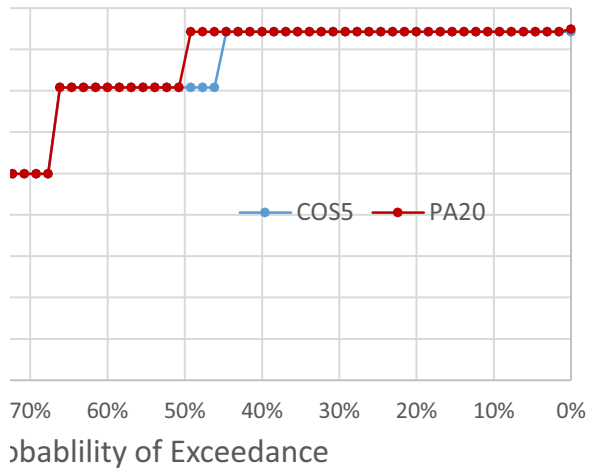
head Juveniles, All Years



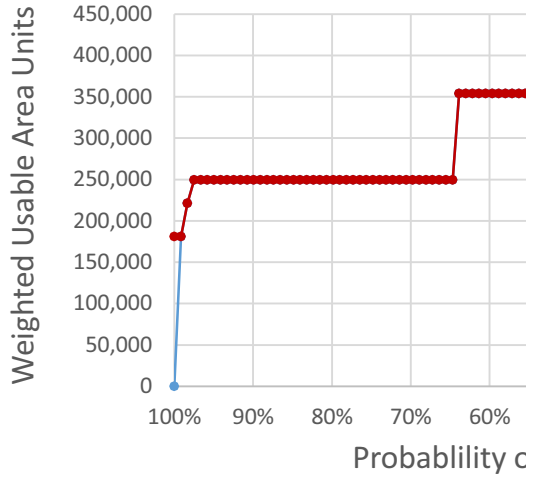
Steelhead Juven



Juveniles, Below Normal Years



Steelhead Juve

















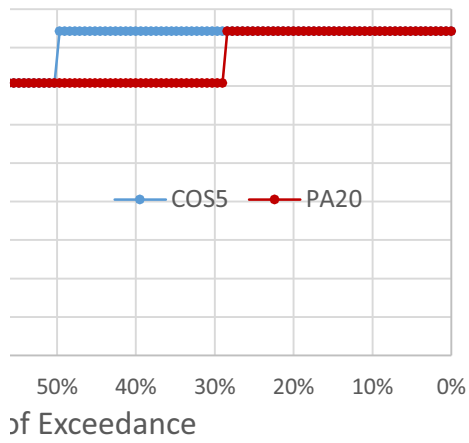




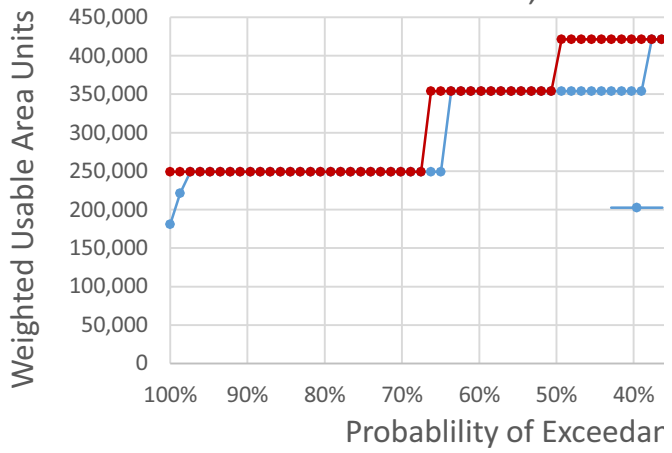




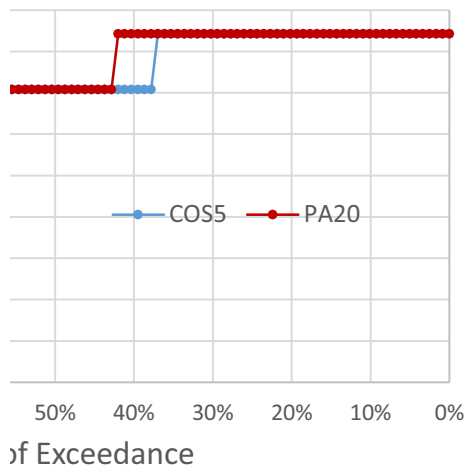
Steelhead Juveniles, Wet Years



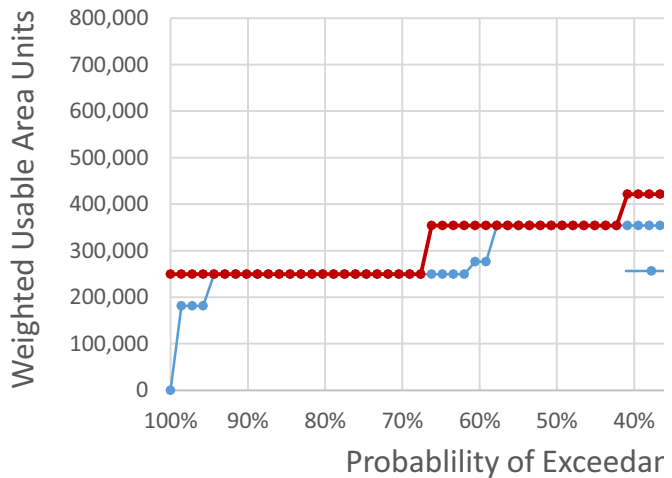
Steelhead Juveniles, Above Normal



Steelhead Juveniles, Dry Years



Steelhead Juveniles, Critical

















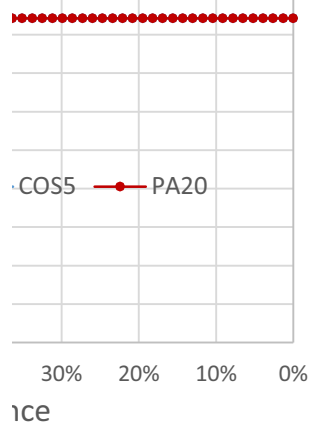








### Normal Years



### Cal Years

