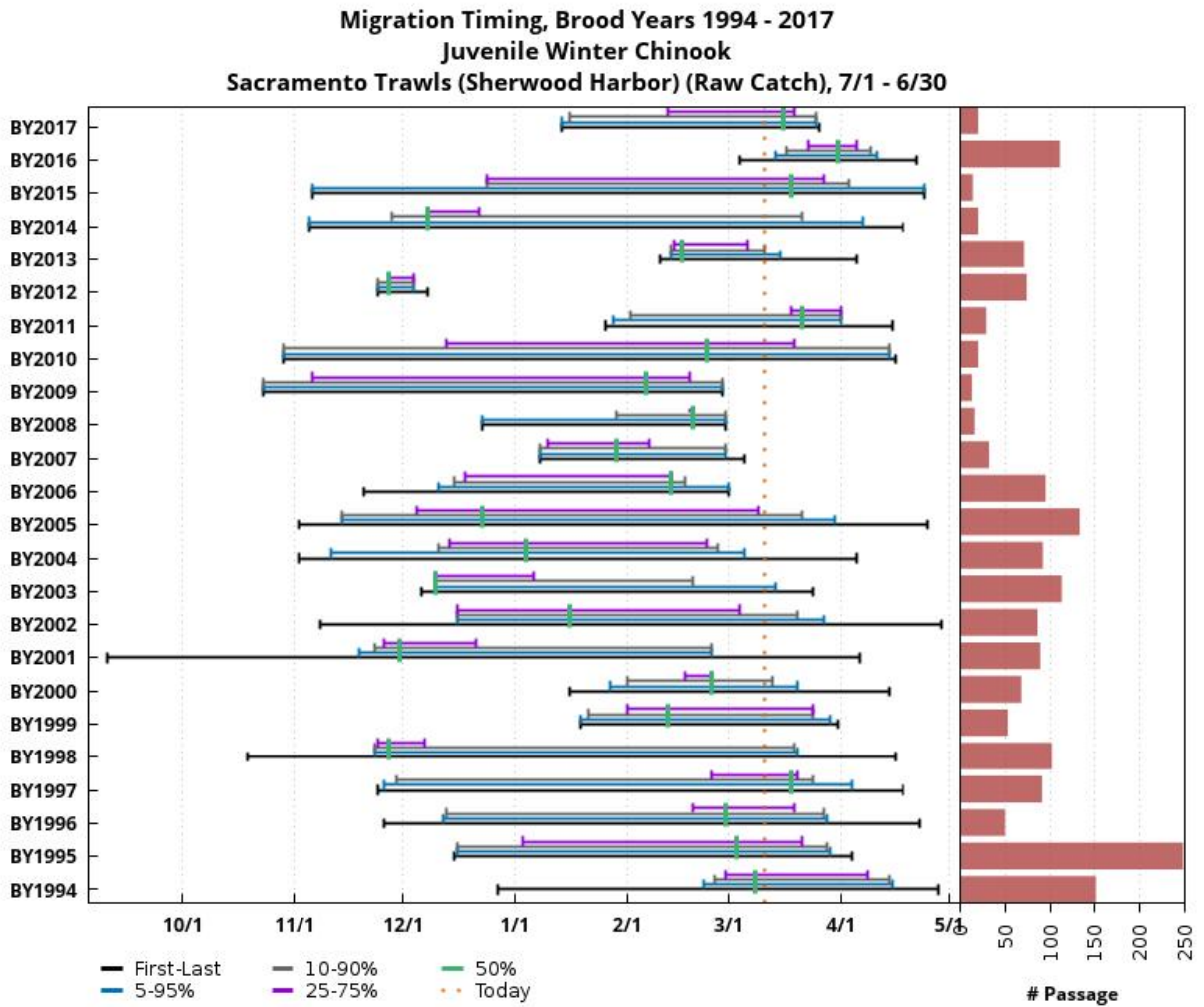


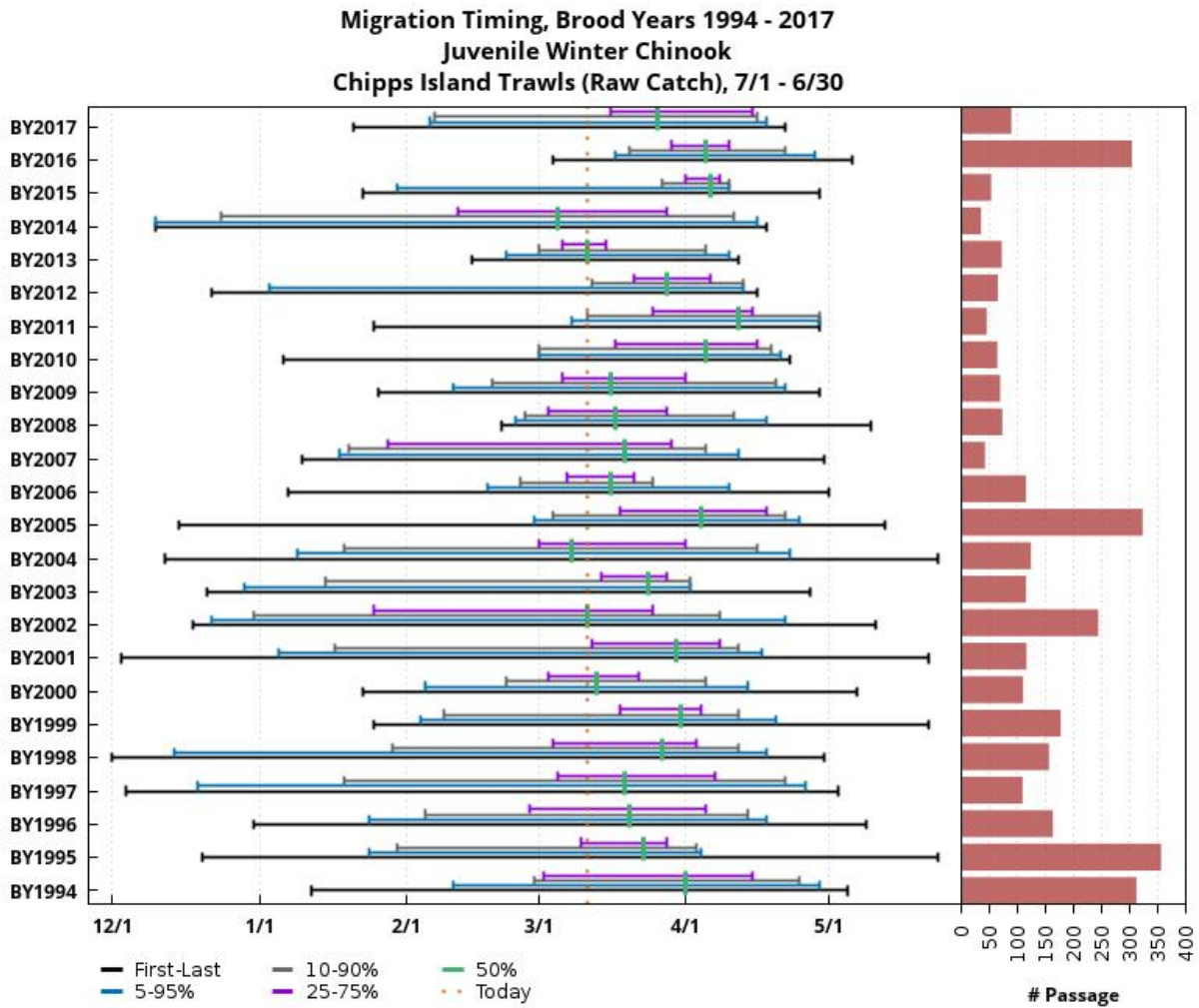
Figure 1. Winter-run migration timing past the Sherwood Harbor – Sacramento Trawl location for Brood Years 1994-2017.



Based on Raw Catch. Preliminary data from USFWS Lodi; subject to revision.
www.cbr.washington.edu/sacramento/

11 Mar 2019 11:55:27 PDT

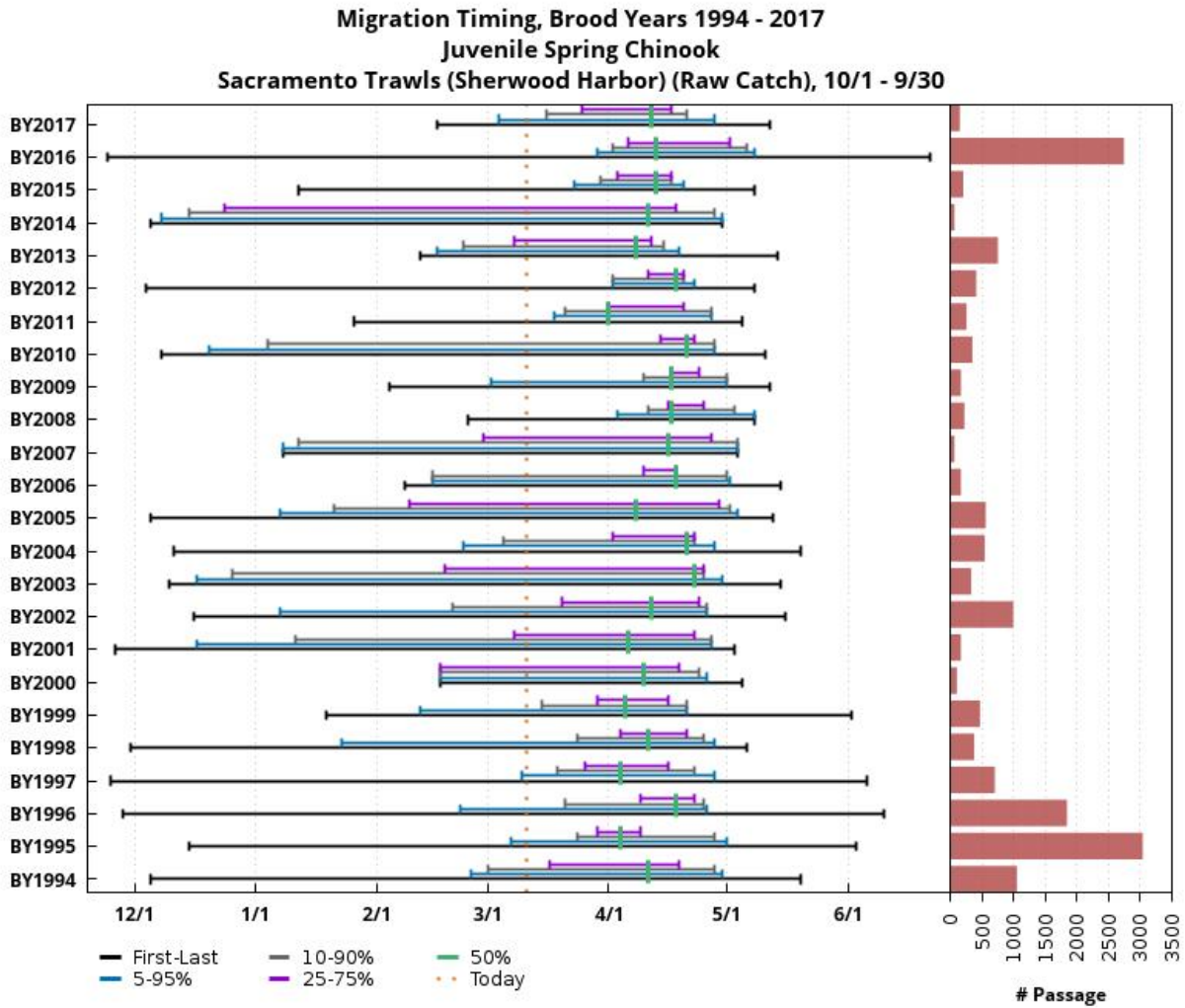
Figure 2. Winter-run migration timing past the Chipps Island Trawl location for Brood Years 1994-2017.



Based on Raw Catch. Preliminary data from USFWS Lodi; subject to revision.
www.cbr.washington.edu/sacramento/

11 Mar 2019 12:00:15 PDT

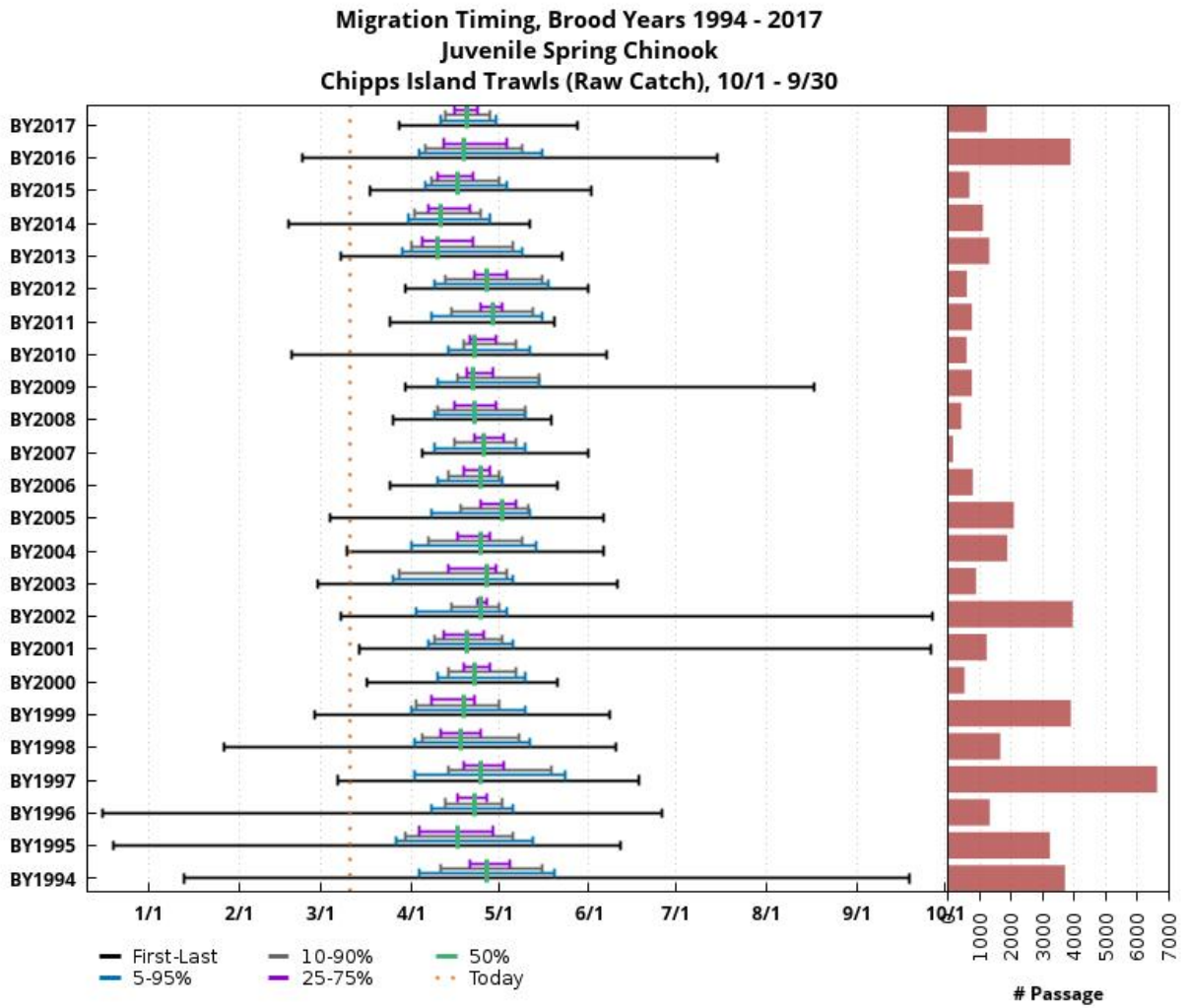
Figure 3. Spring-run migration timing past the Sherwood Harbor – Sacramento Trawl location for Brood Years 1994-2017.



Based on Raw Catch. Preliminary data from USFWS Lodi; subject to revision.
www.cbr.washington.edu/sacramento/

11 Mar 2019 15:48:13 PDT

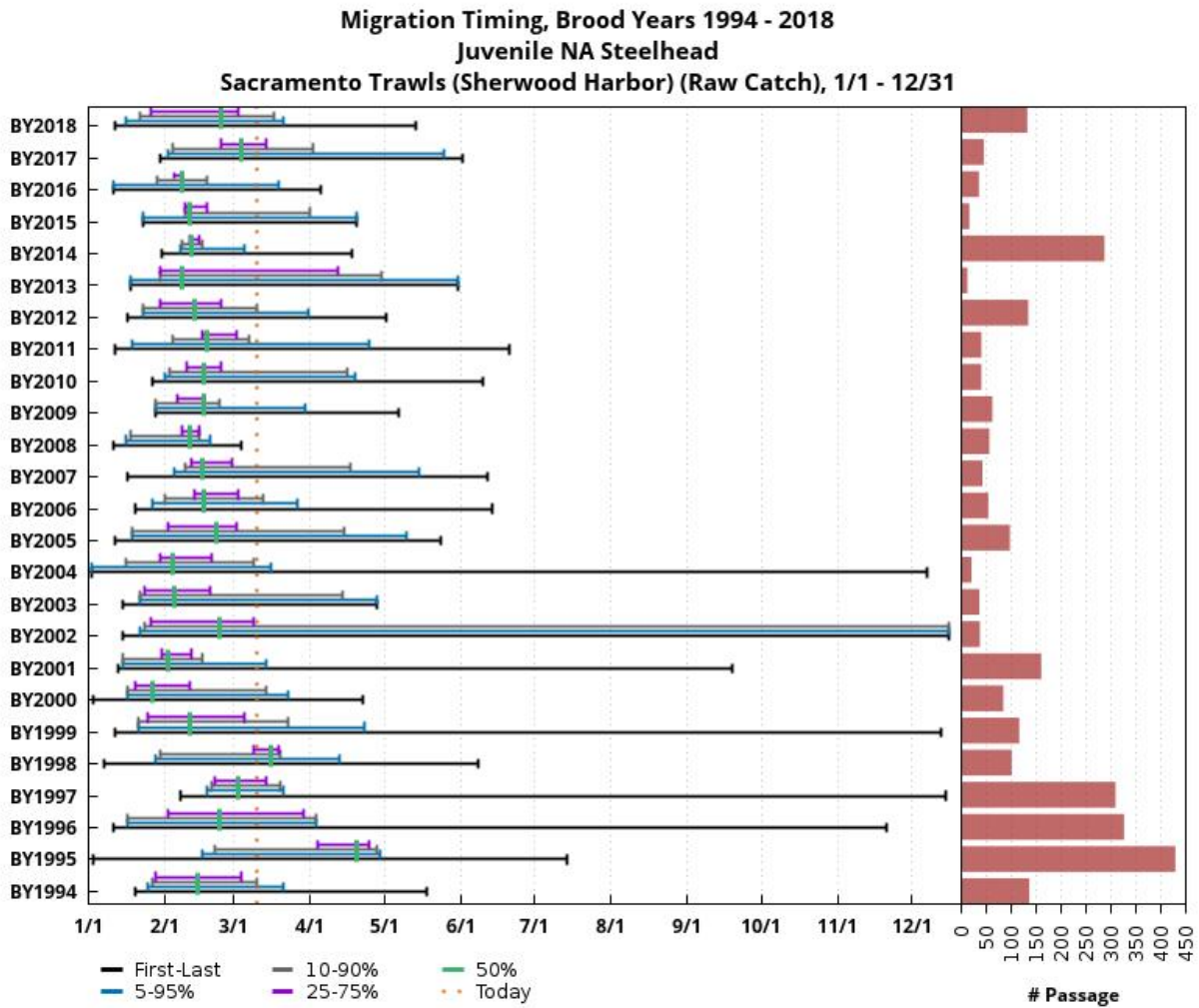
Figure 4. Spring-run migration timing past the Chipps Island Trawl location for Brood Years 1994-2017.



Based on Raw Catch. Preliminary data from USFWS Lodi; subject to revision.
www.cbr.washington.edu/sacramento/

11 Mar 2019 15:53:46 PDT

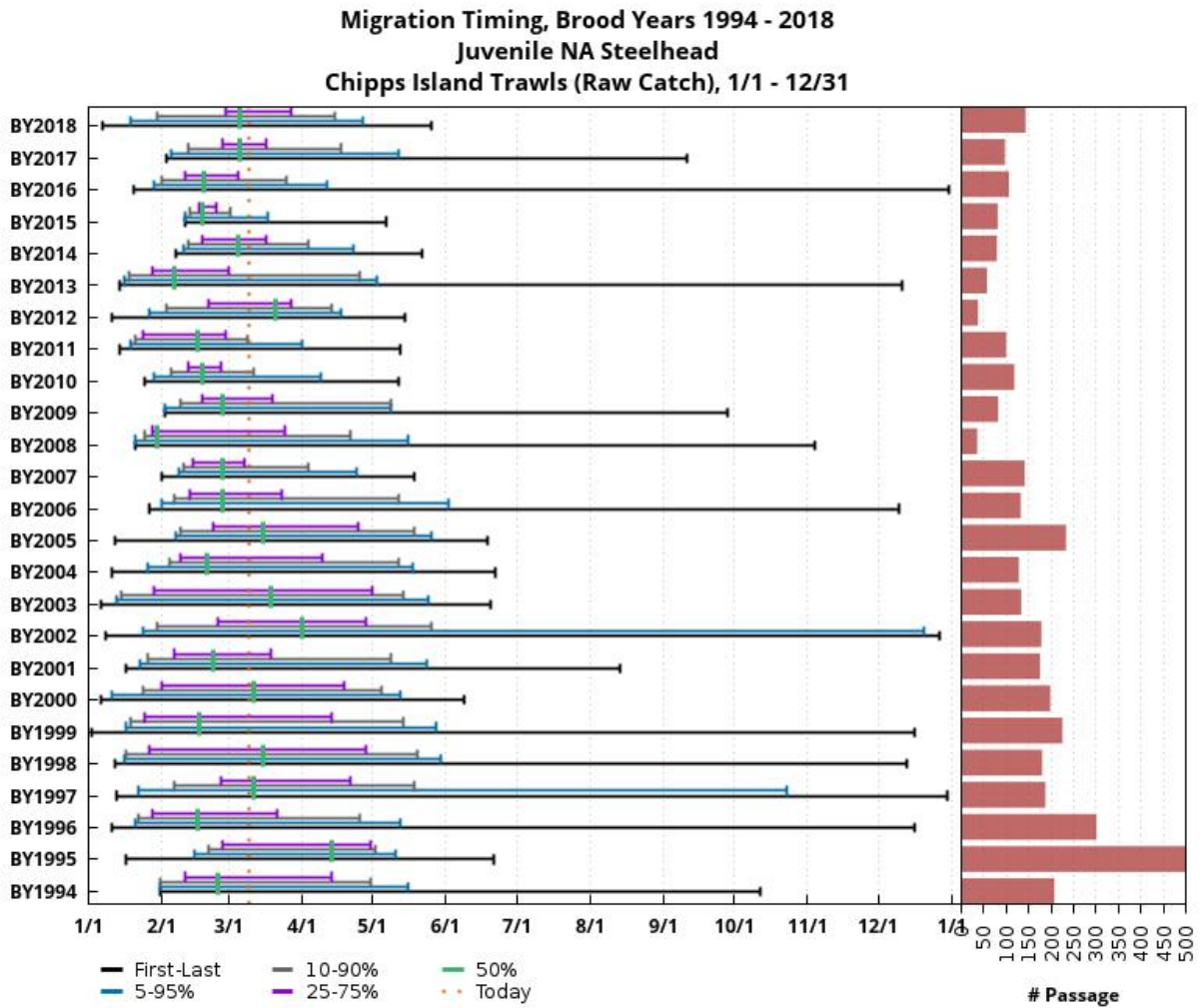
Figure 5. Unclipped Steelhead migration timing past the Sherwood Harbor – Sacramento Trawl location for Brood Years 1994-2017.



Based on Raw Catch. Preliminary data from USFWS Lodi; subject to revision.
www.cbr.washington.edu/sacramento/

11 Mar 2019 16:01:40 PDT

Figure 6. Unclipped steelhead migration timing past the Chipps Island Trawl location for Brood Years 1994-2017.



Based on Raw Catch. Preliminary data from USFWS Lodi; subject to revision.
www.cbr.washington.edu/sacramento/

11 Mar 2019 16:08:14 PDT

Figure 7. Map of sampling locations for the North Bay Aqueduct monitoring trawls

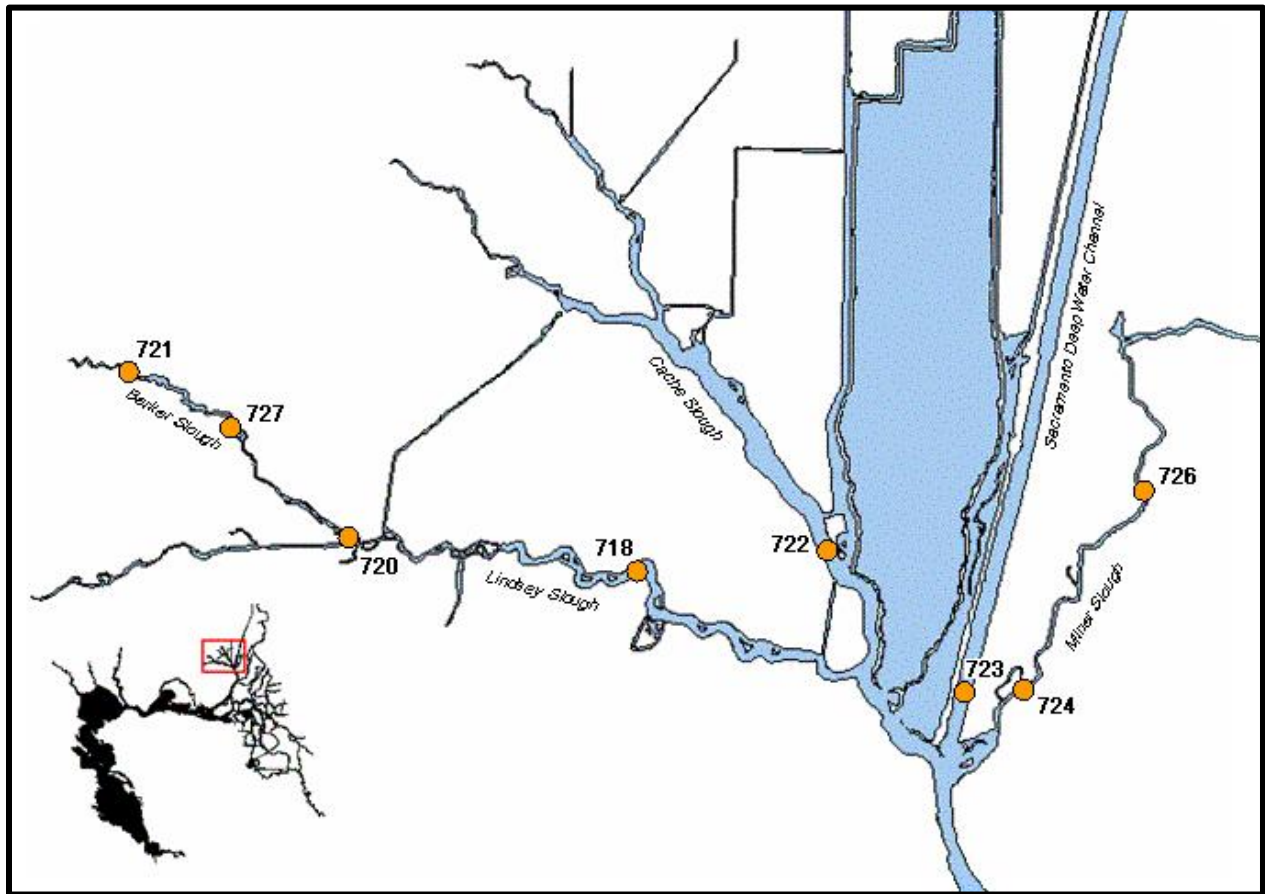
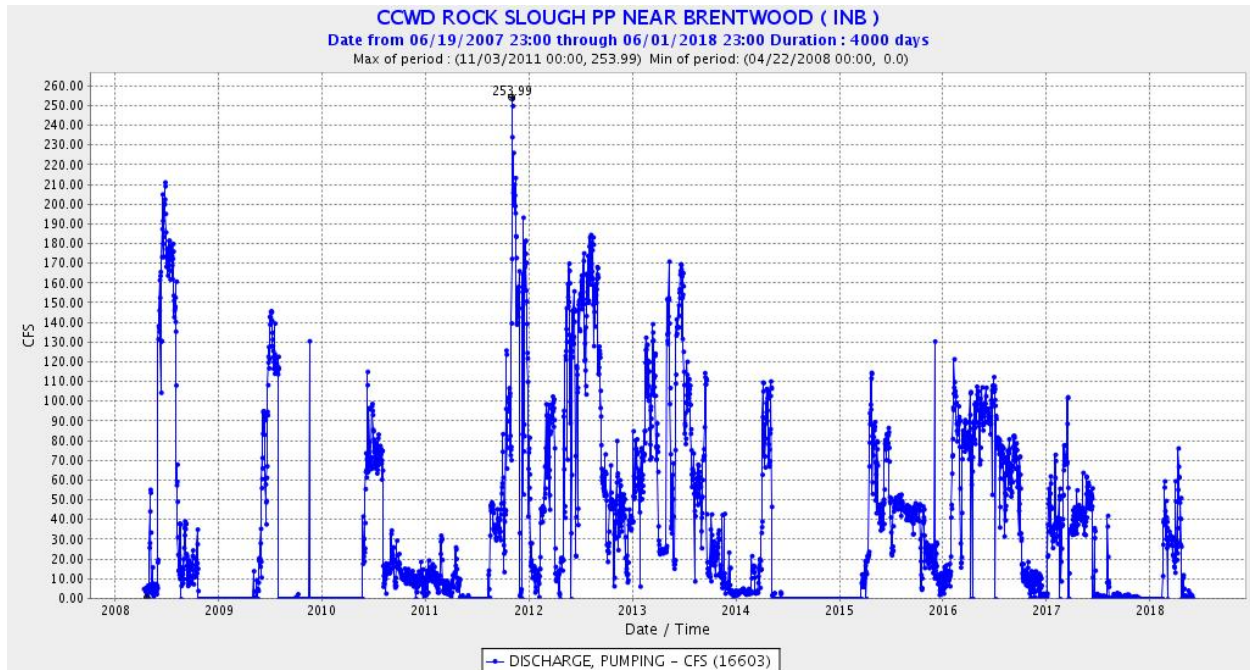


Figure 8. Historical diversion of water through the CCWD Rock Slough Pumping Plants 2008-2019.



Available: <http://cdec.water.ca.gov/dynamicapp/QueryDaily?s=INB&d=17-Mar-2019+00:00>

Figure 9. Salvage Timing of unclipped winter-run sized Chinook at the SWP and CVP Fish Collection Facilities (1994-2017)

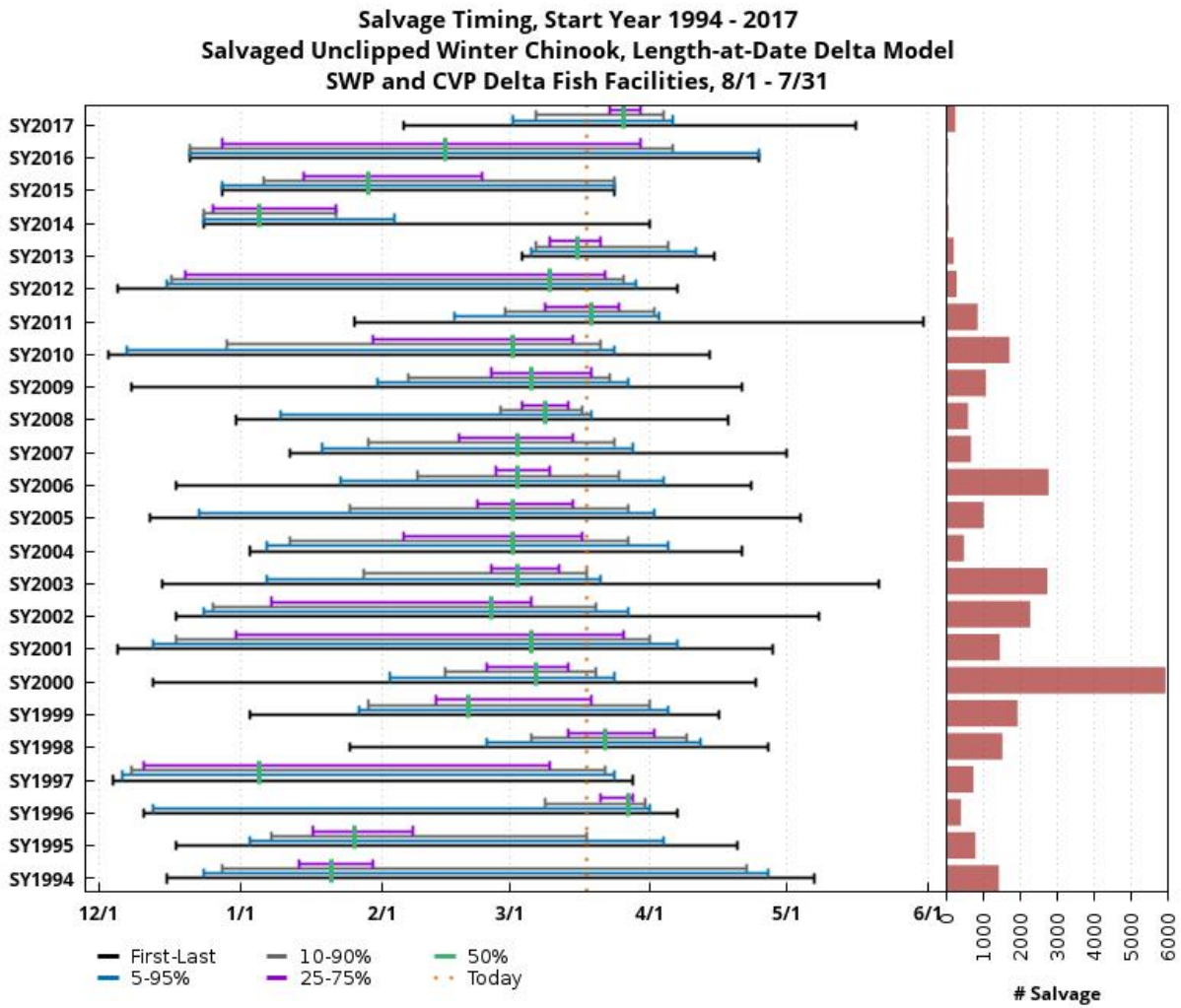


Figure 10. Salvage Timing of unclipped spring-run sized Chinook at the SWP and CVP Fish Collection Facilities (1994-2017)

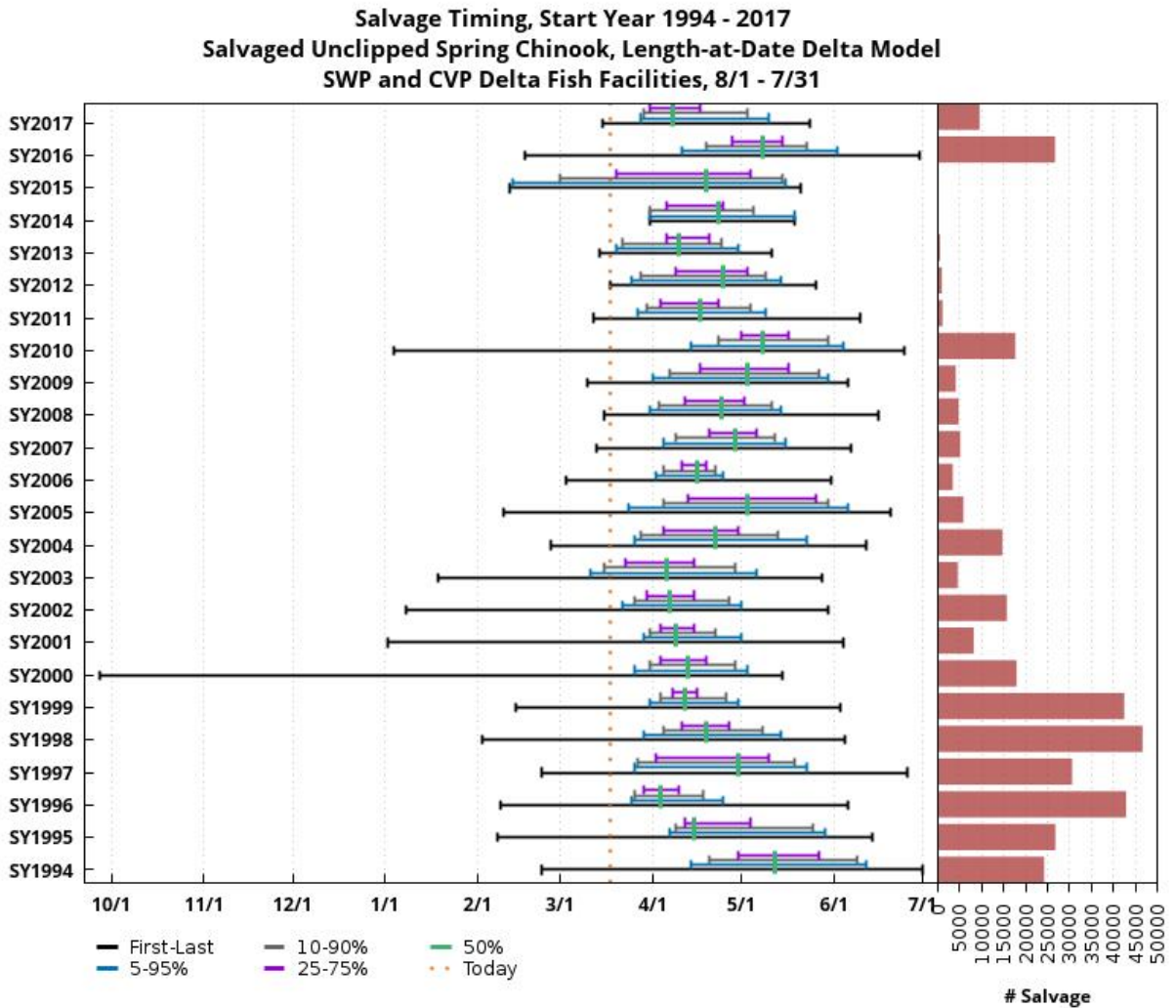


Figure 11. Salvage Timing of unclipped steelhead at the SWP and CVP Fish Collection Facilities (1998-2017)

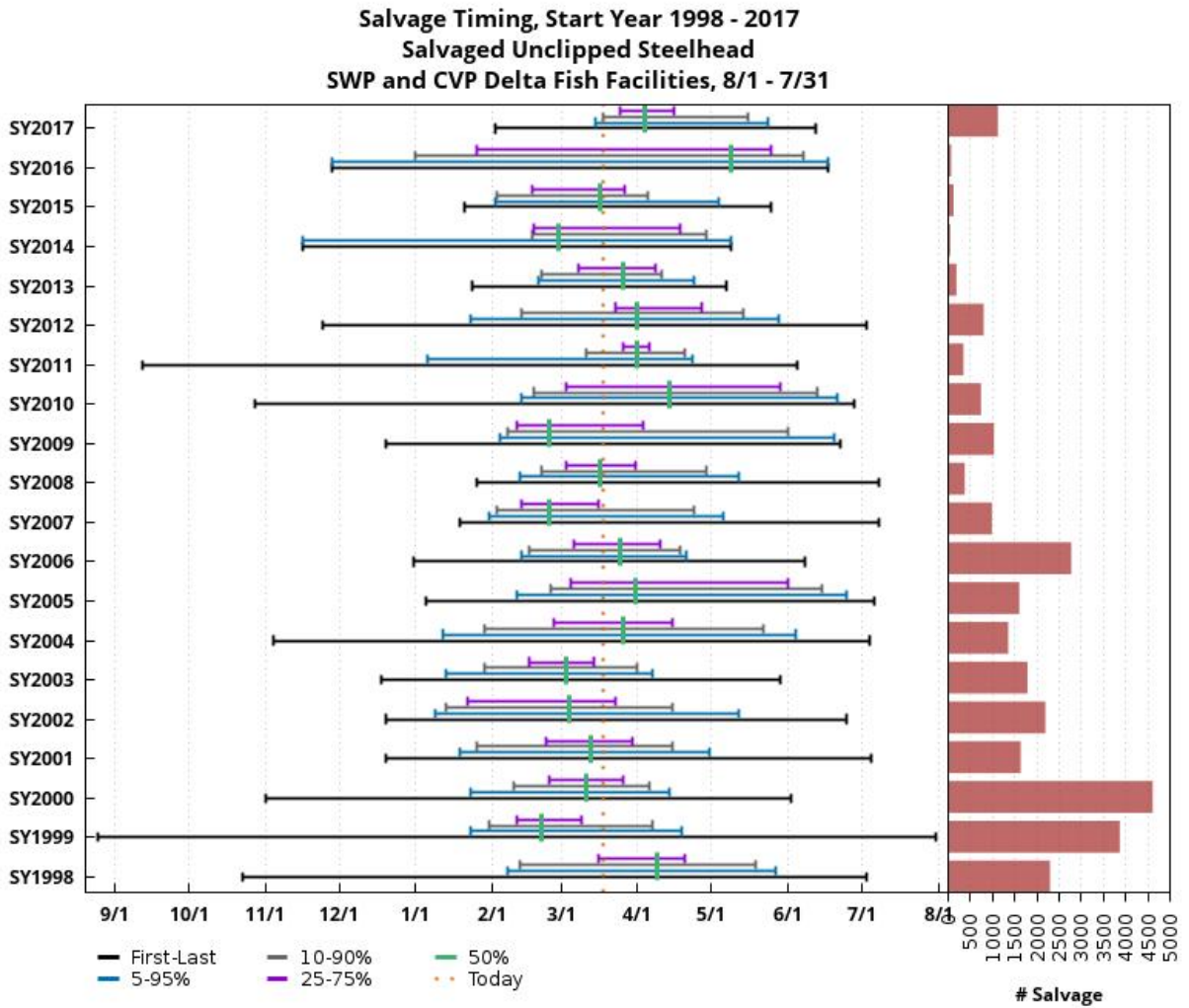
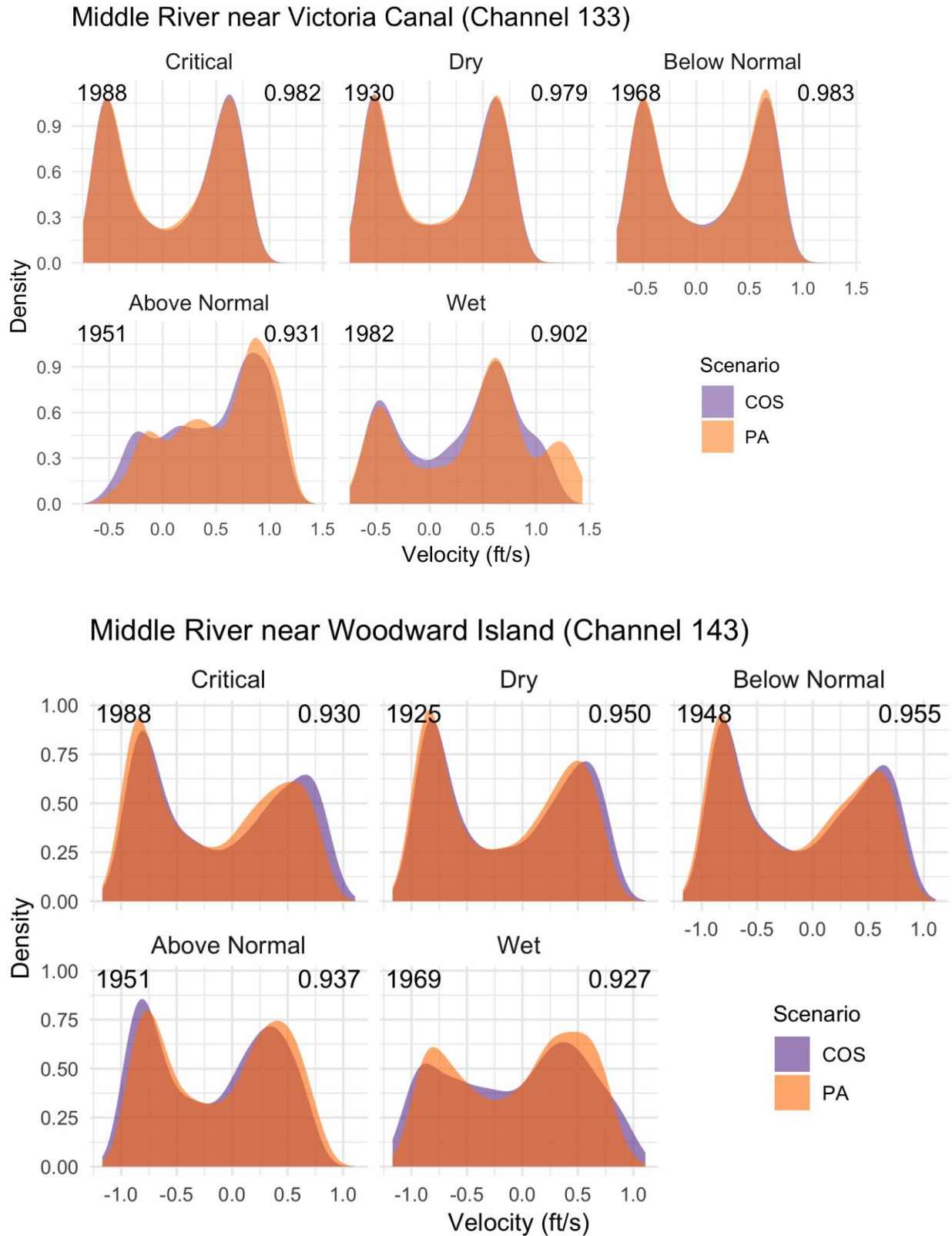
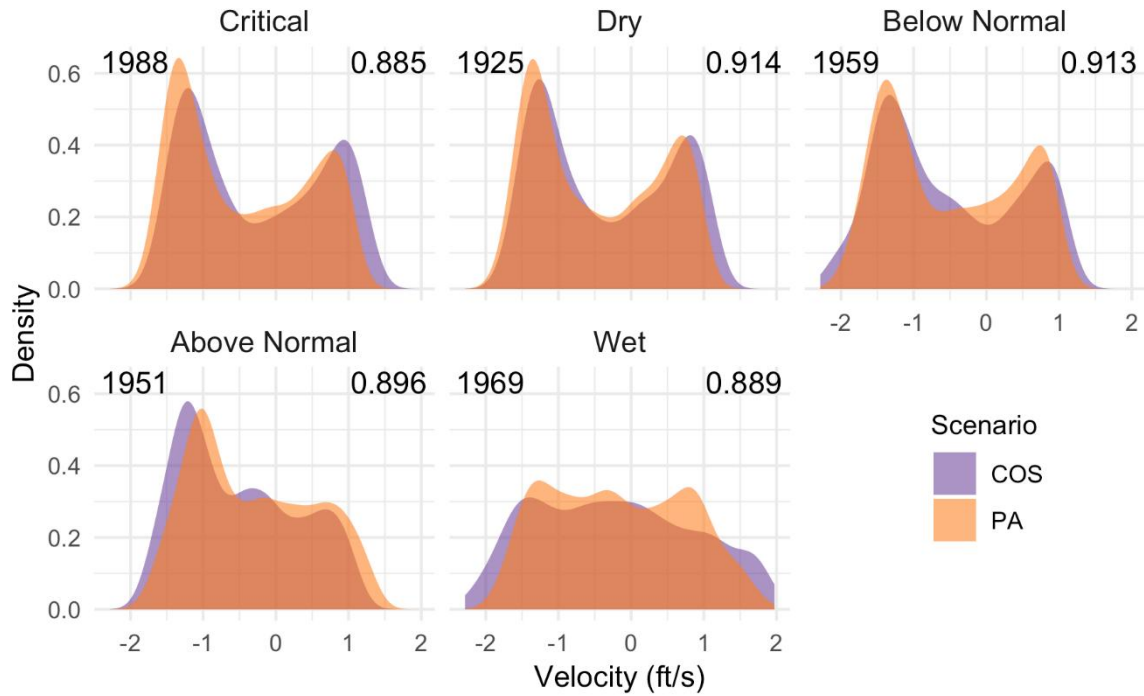


Figure 12. Velocity Density Plots for different locations in the South Delta: Dec – Feb Plots

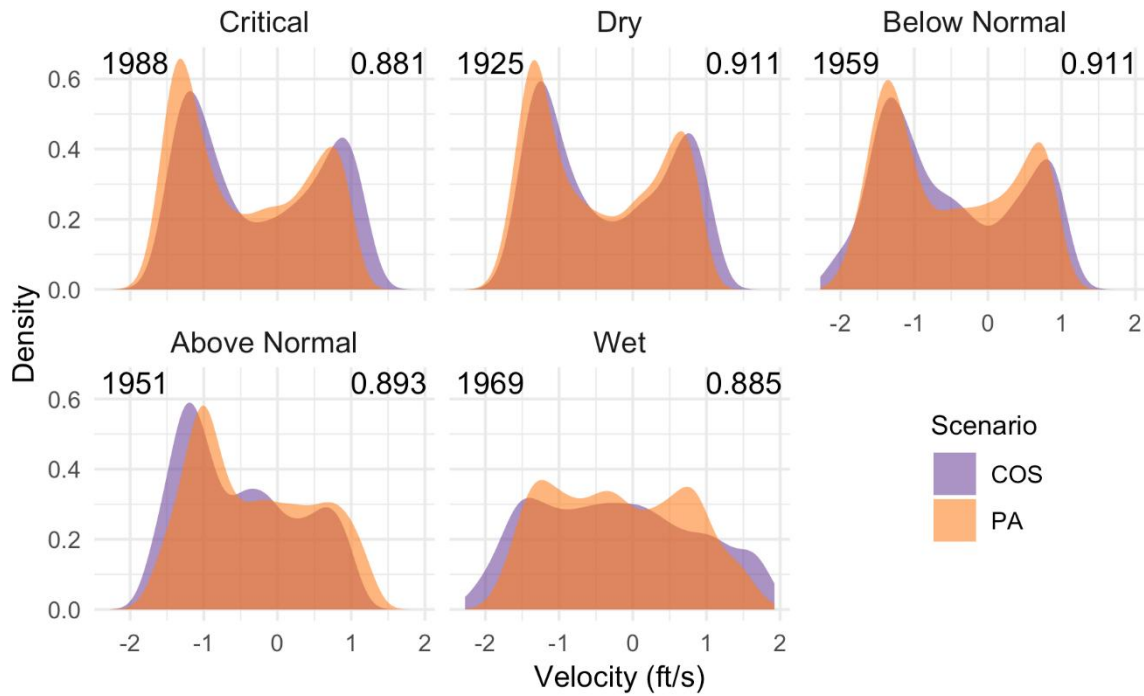


Dec – Feb

Old River @ Hwy 4 (Channel 90)

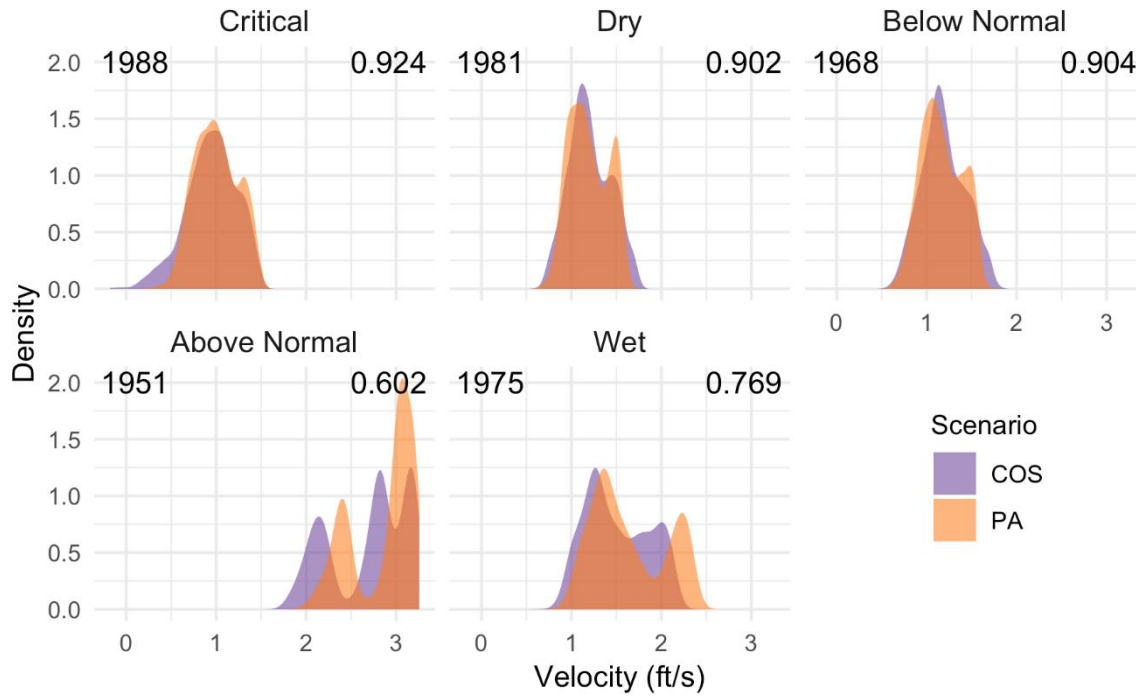


Old River downstream of facilities (Channel 89)

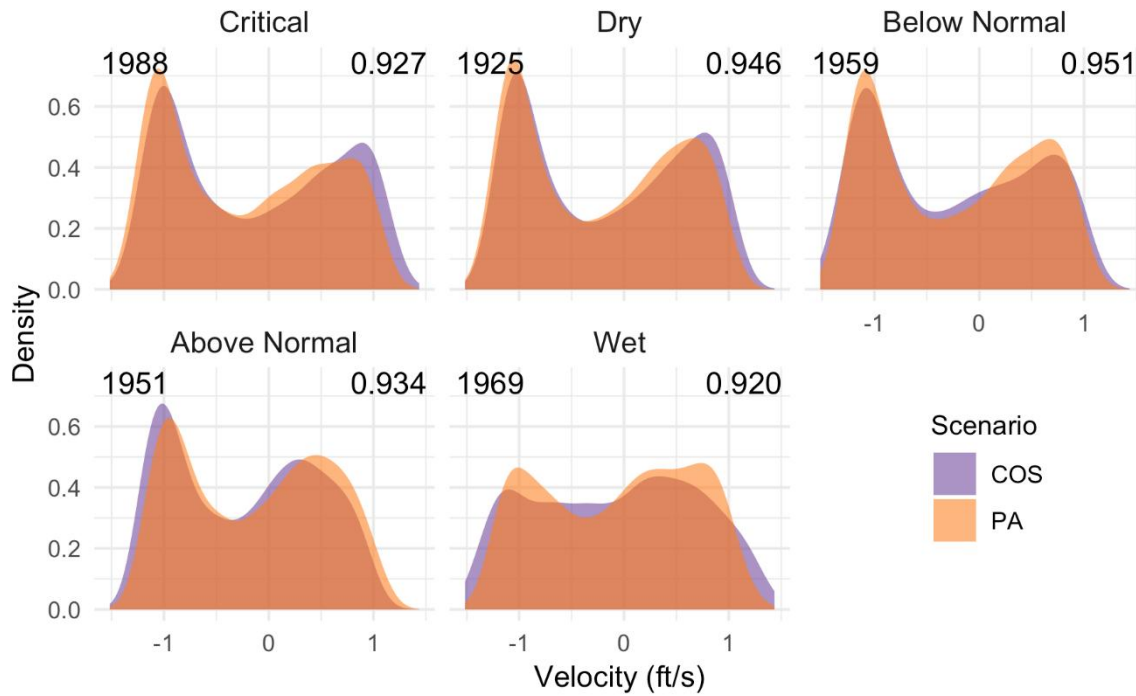


Dec – Feb

Old River near HOR (Channel 55)

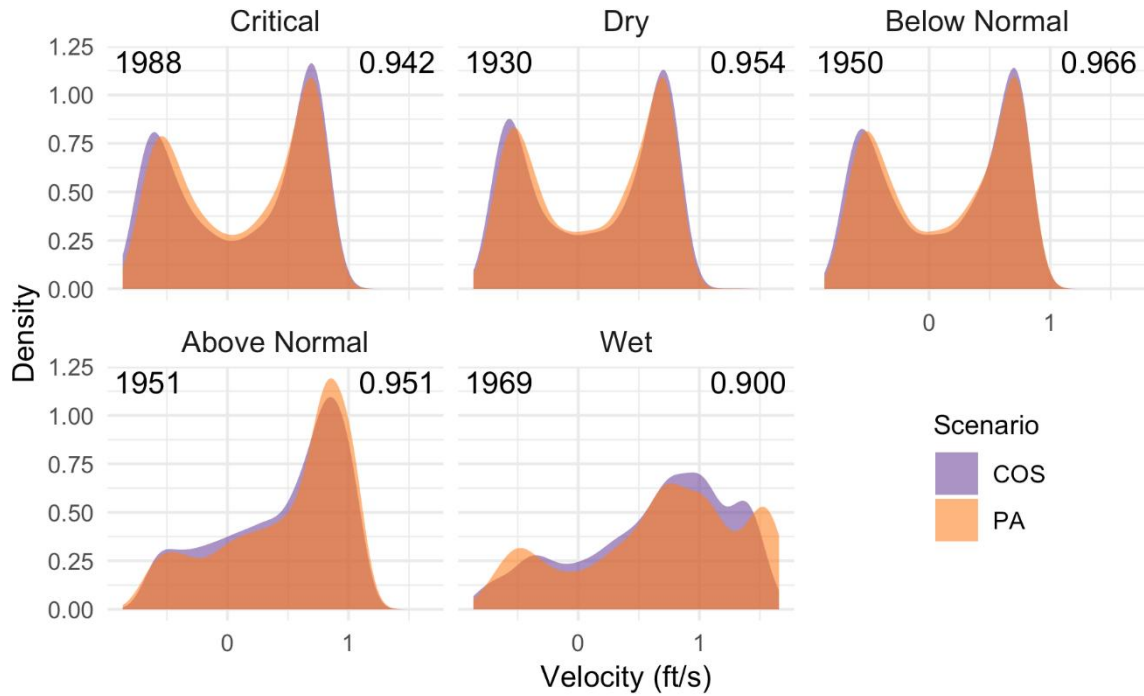


Old River near Woodward Island (Channel 95)

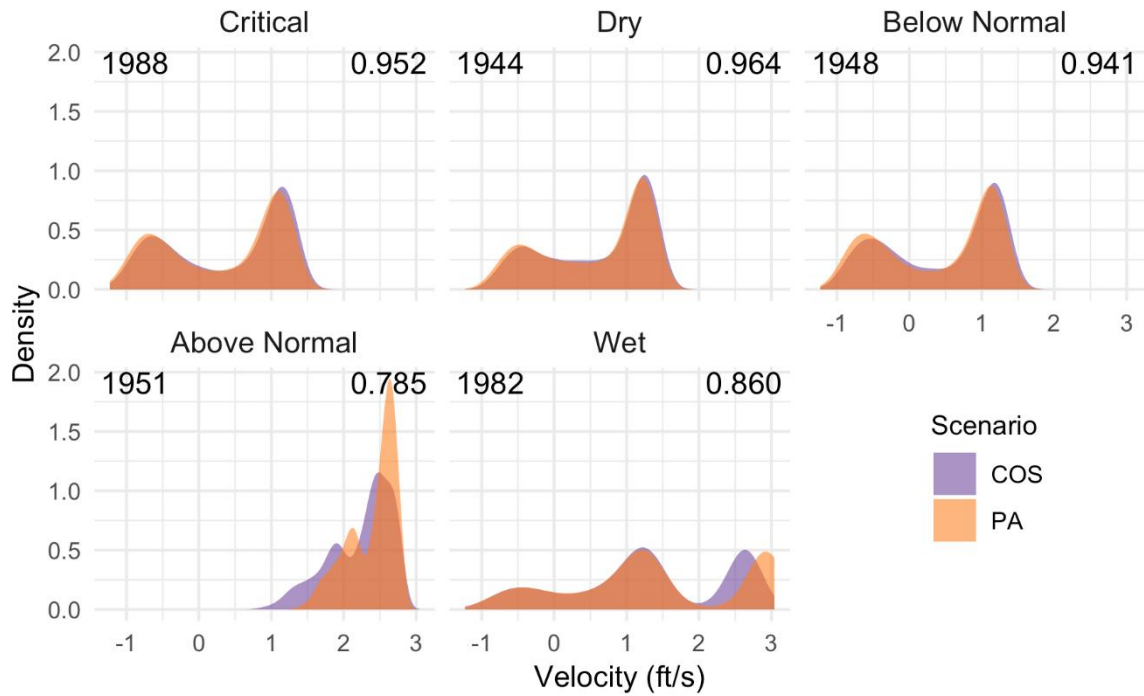


Dec – Feb

Old River upstream of facilities (Channel 78)

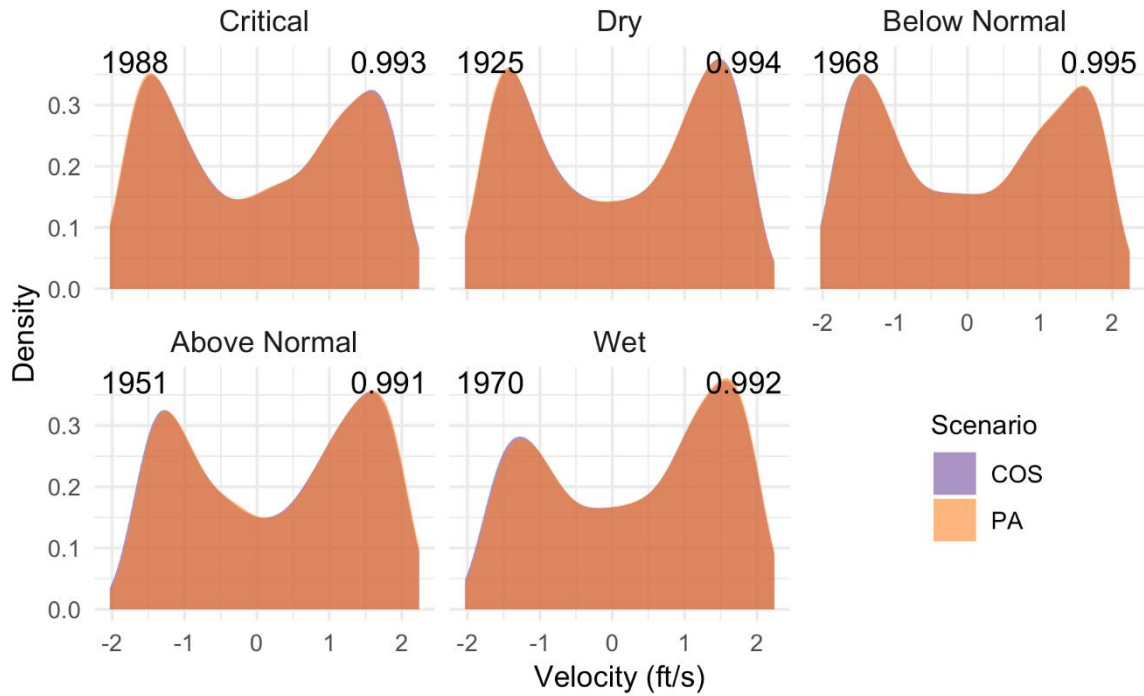


SJR near HOR (Channel 9)



Dec – Feb

SJR near Jersey Point (Channel 49)



SJR near Mokelumne (Channel 45)

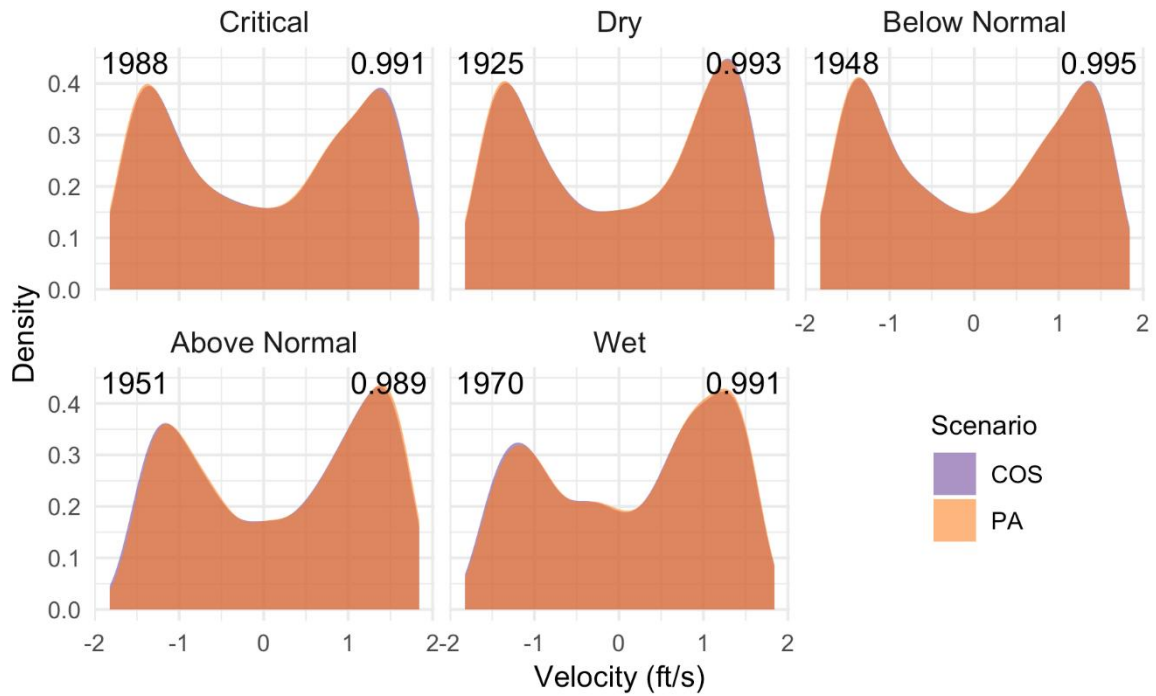
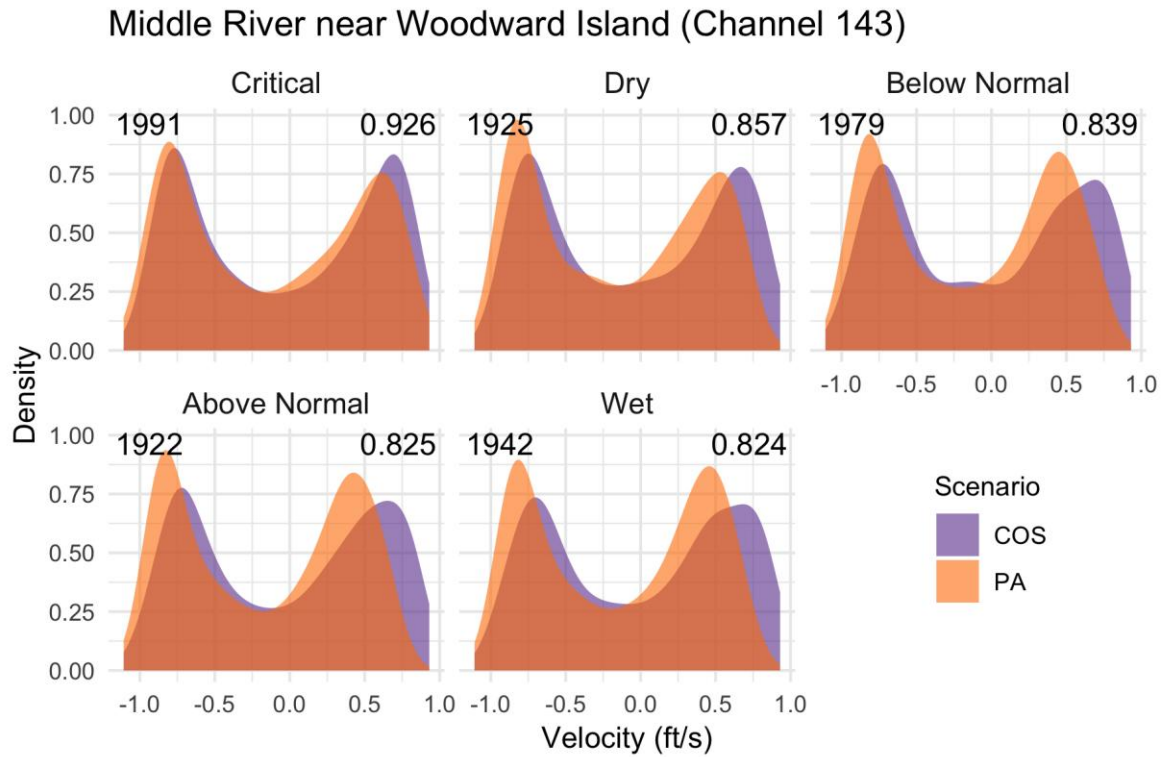
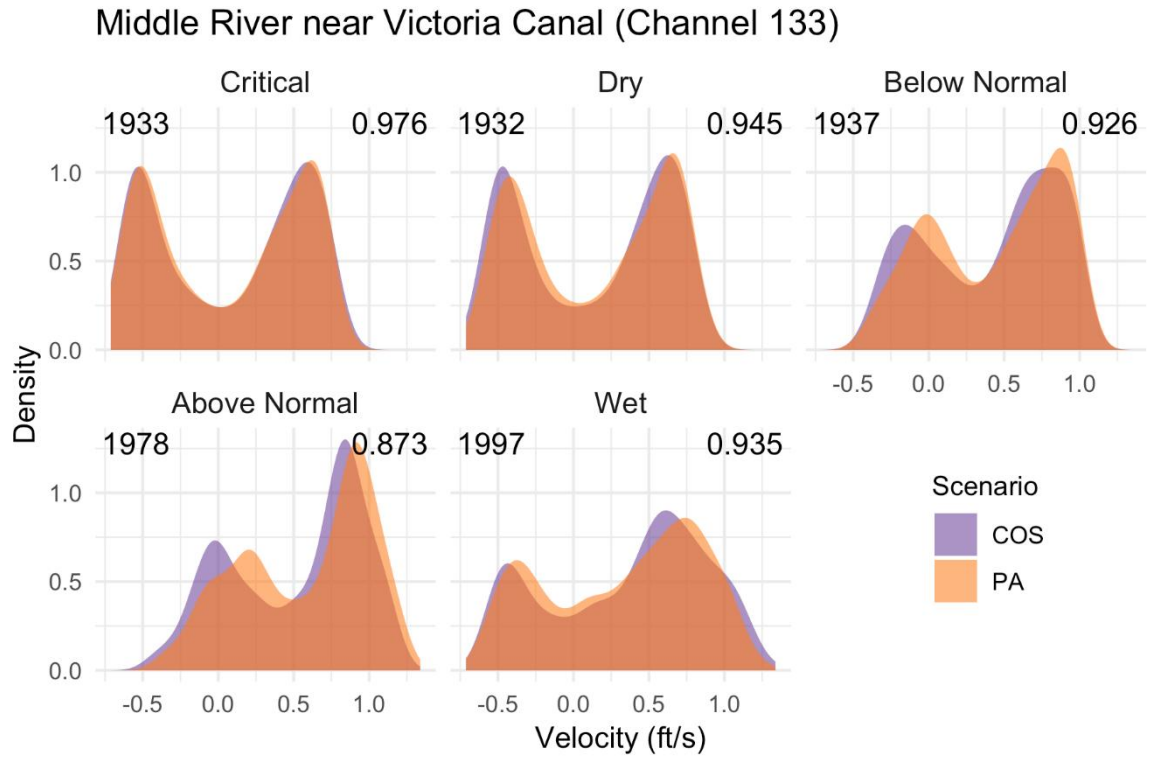
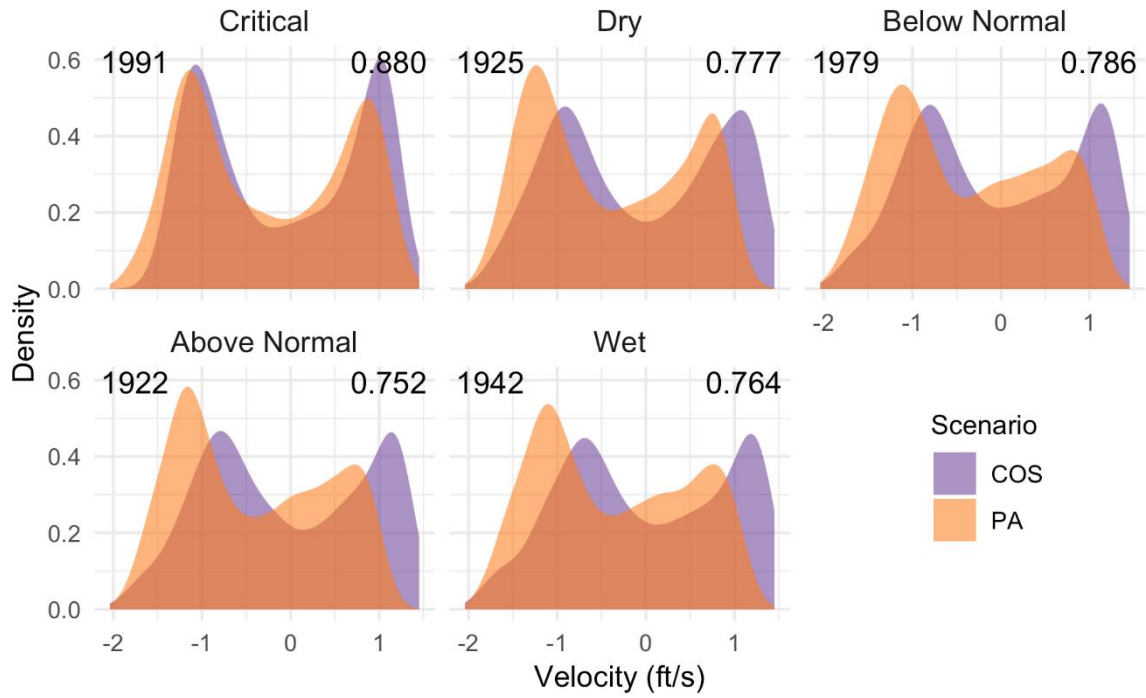


Figure 13: Velocity Density Plots for different locations in the South Delta: Mar – May Plots

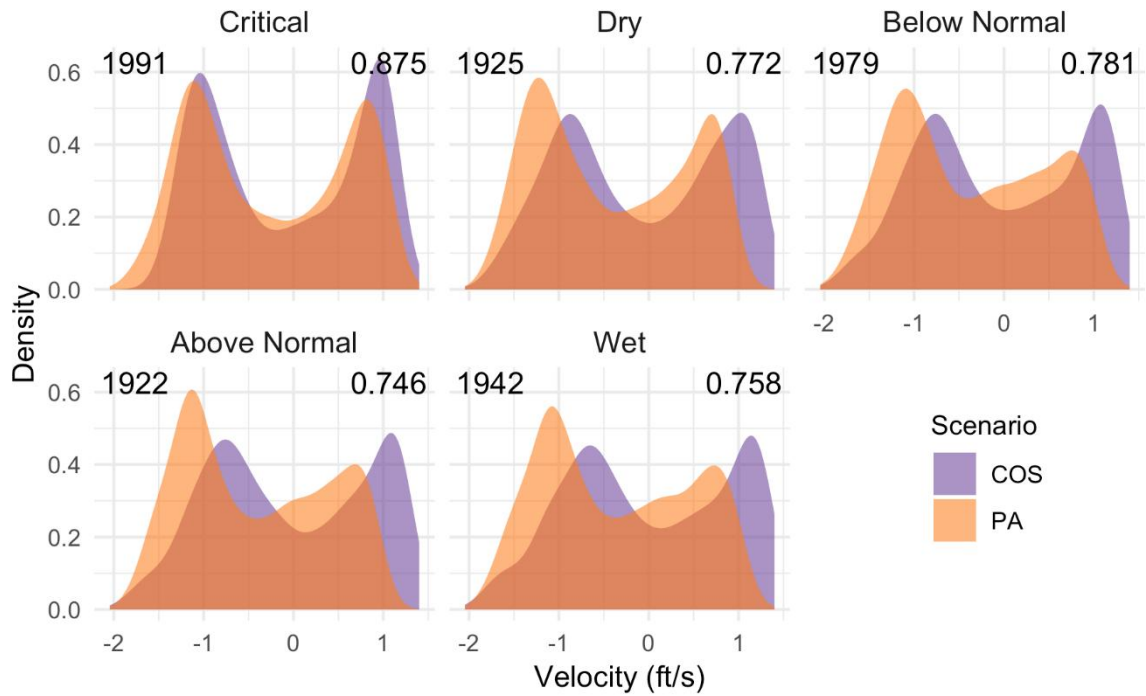


Mar – May

Old River @ Hwy 4 (Channel 90)

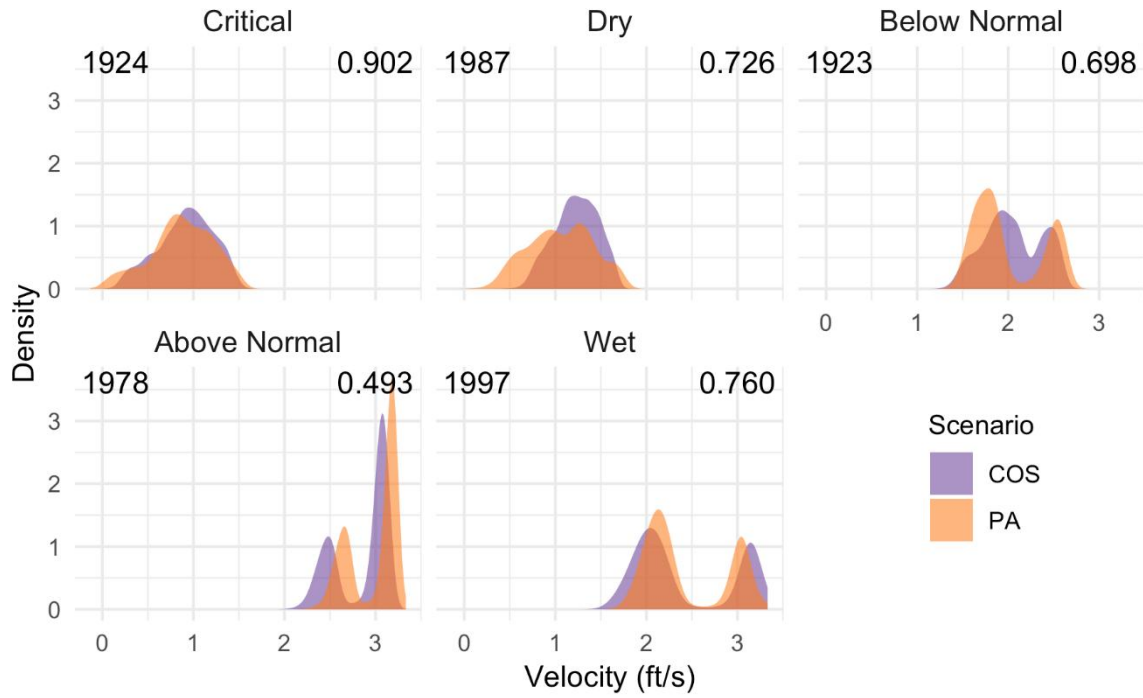


Old River downstream of facilities (Channel 89)

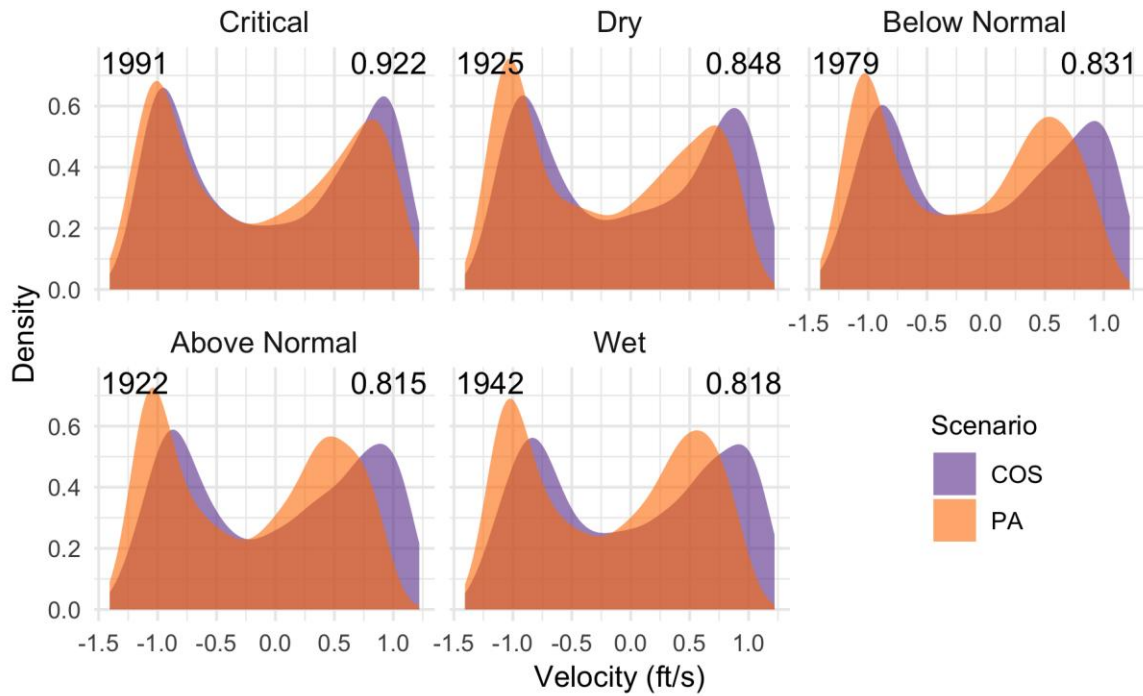


Mar – May

Old River near HOR (Channel 55)

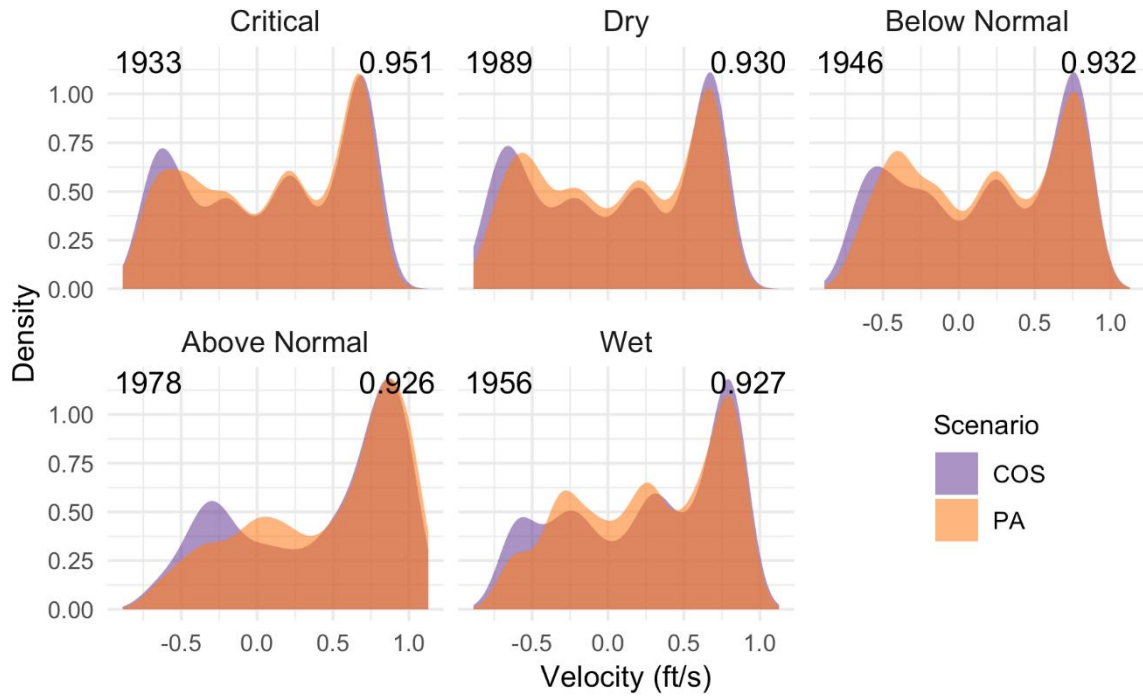


Old River near Woodward Island (Channel 95)

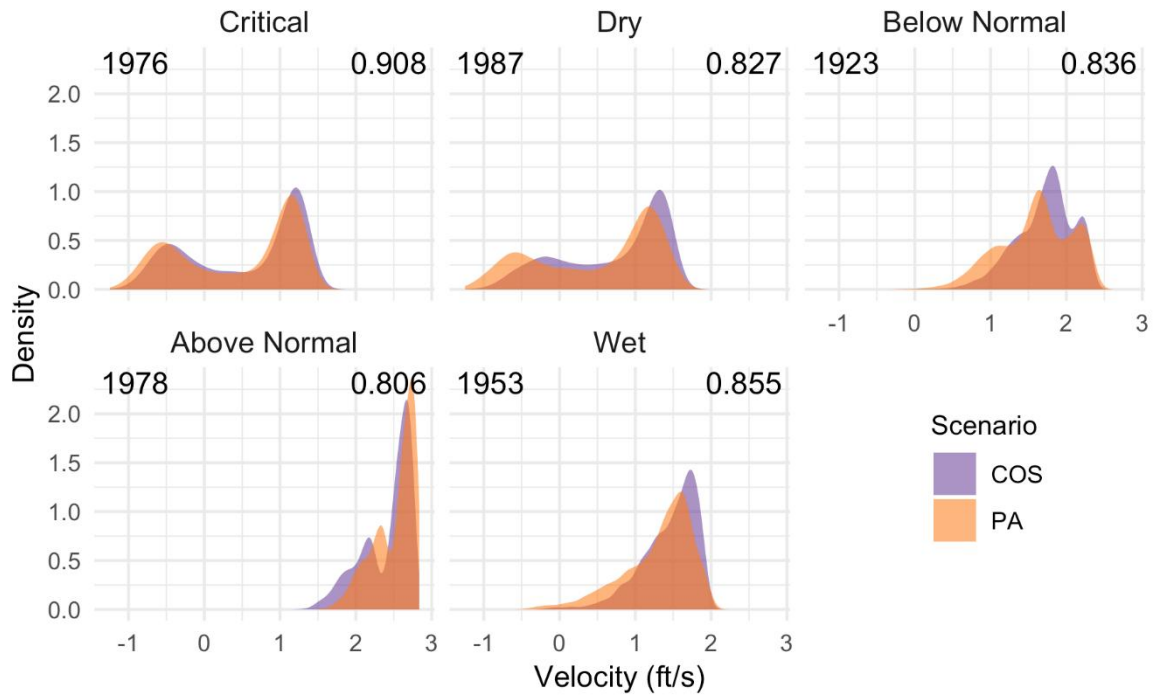


Mar – May

Old River upstream of facilities (Channel 78)

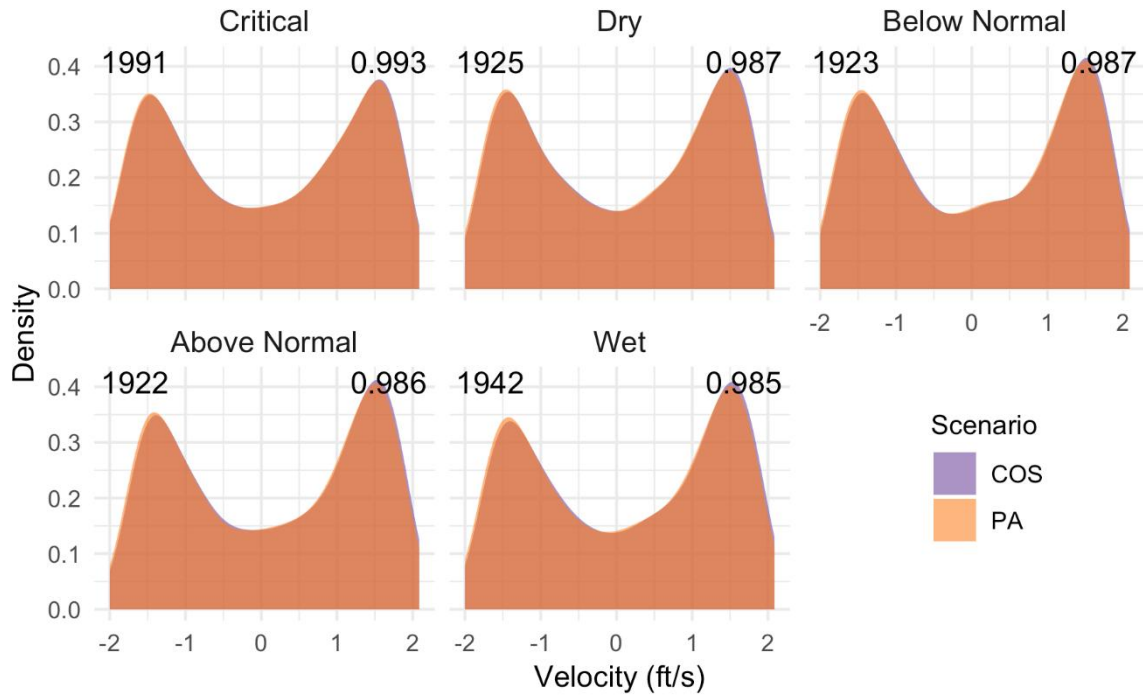


SJR near HOR (Channel 9)



Mar – May

SJR near Jersey Point (Channel 49)



SJR near Mokelumne (Channel 45)

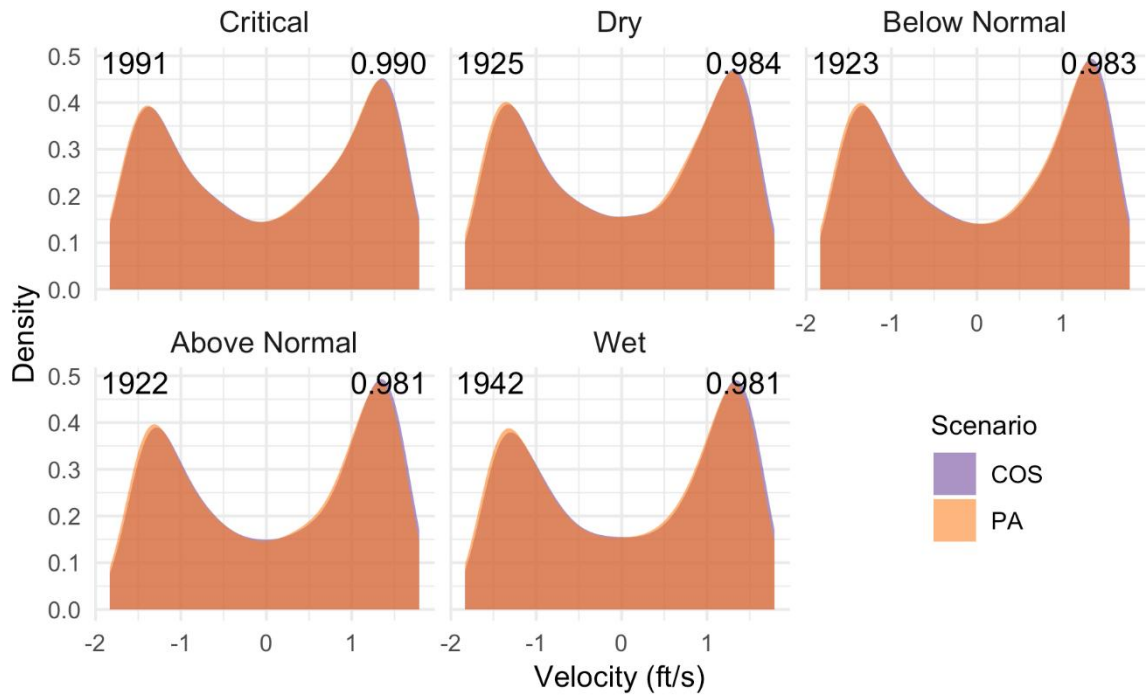
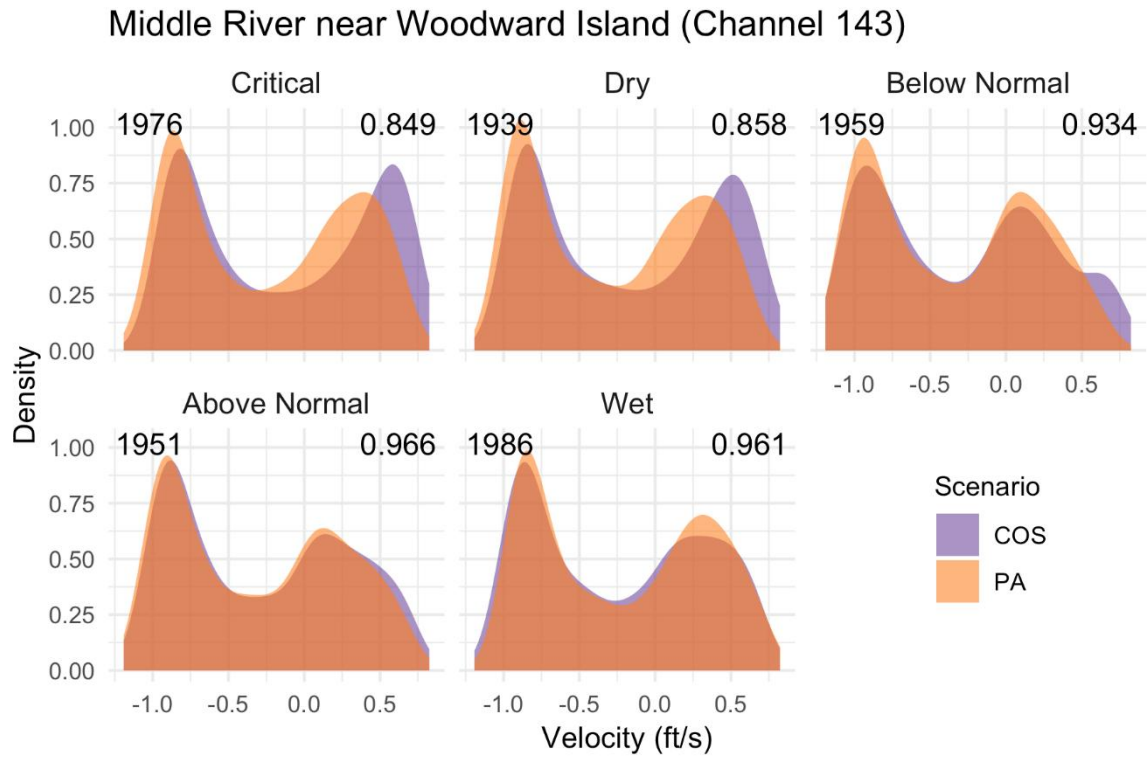
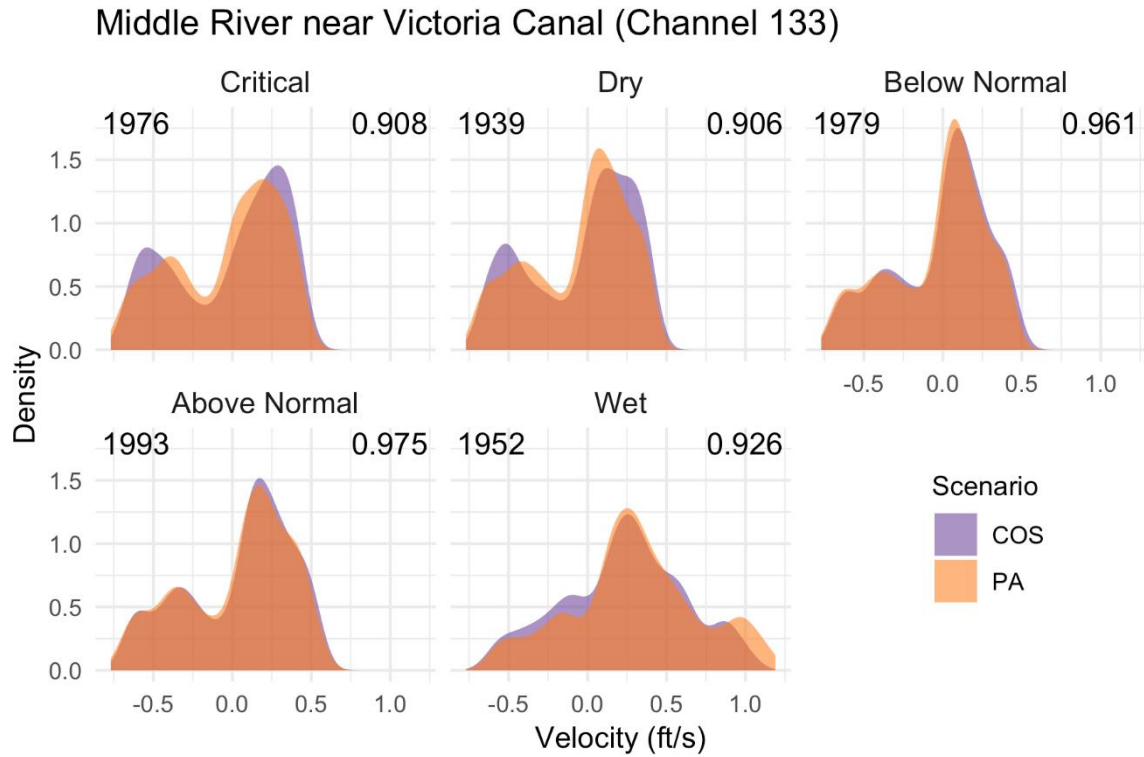
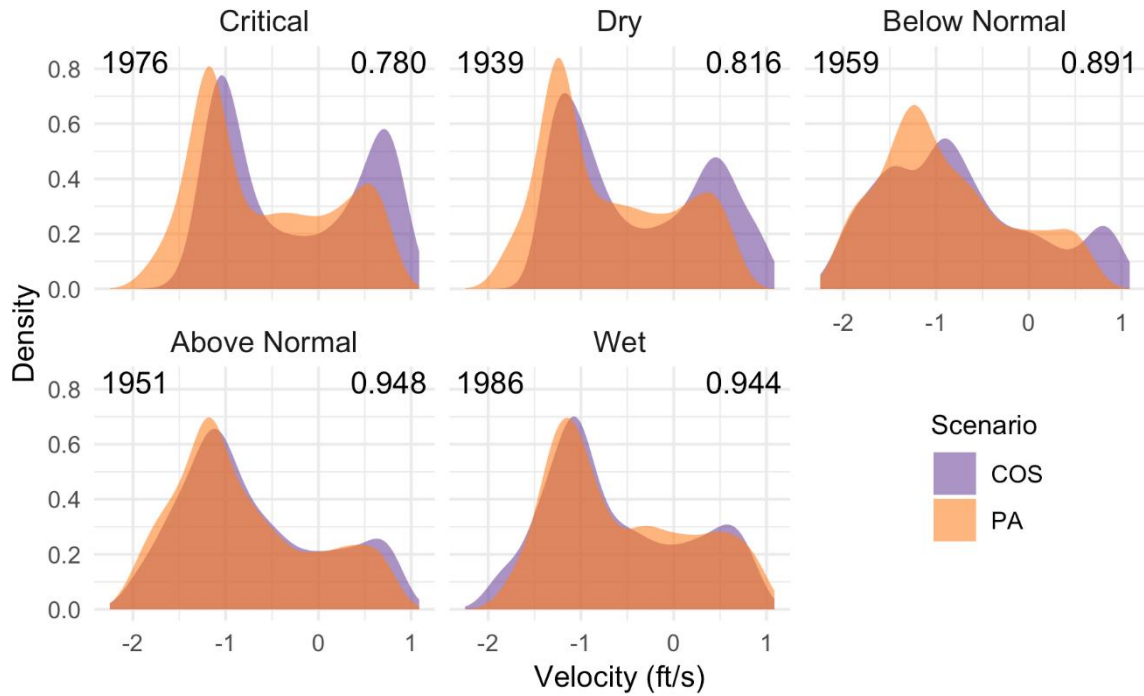


Figure 14: Velocity Density Plots for different locations in the South Delta: Jun – Aug Plots

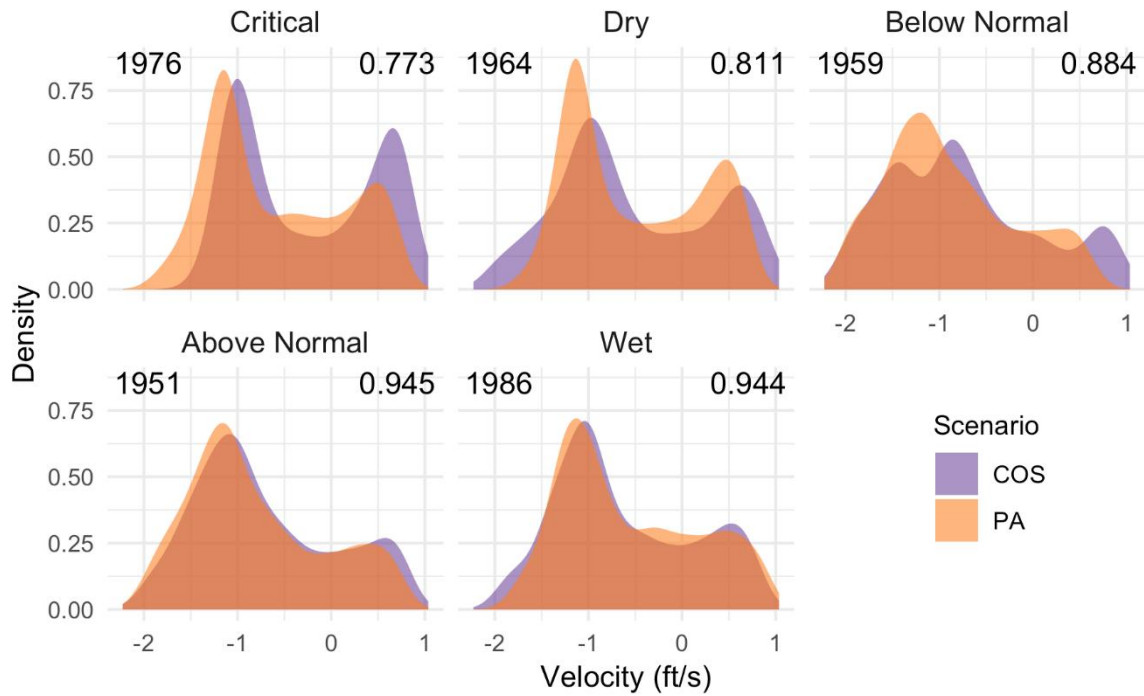


Jun – Aug

Old River @ Hwy 4 (Channel 90)

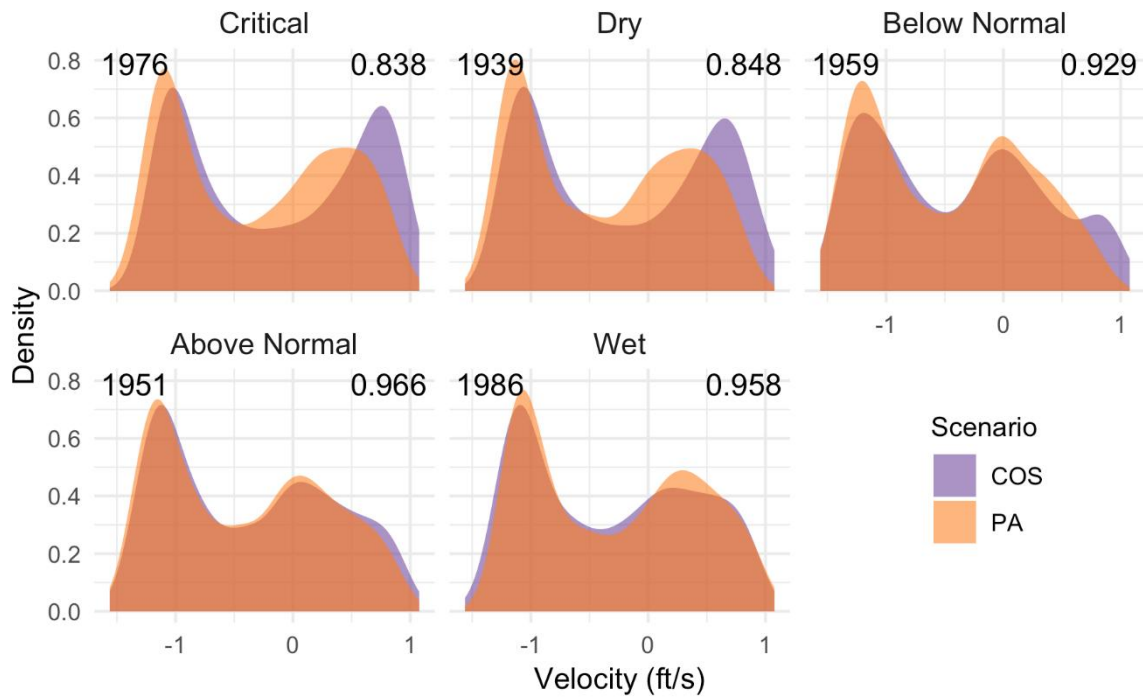


Old River downstream of facilities (Channel 89)

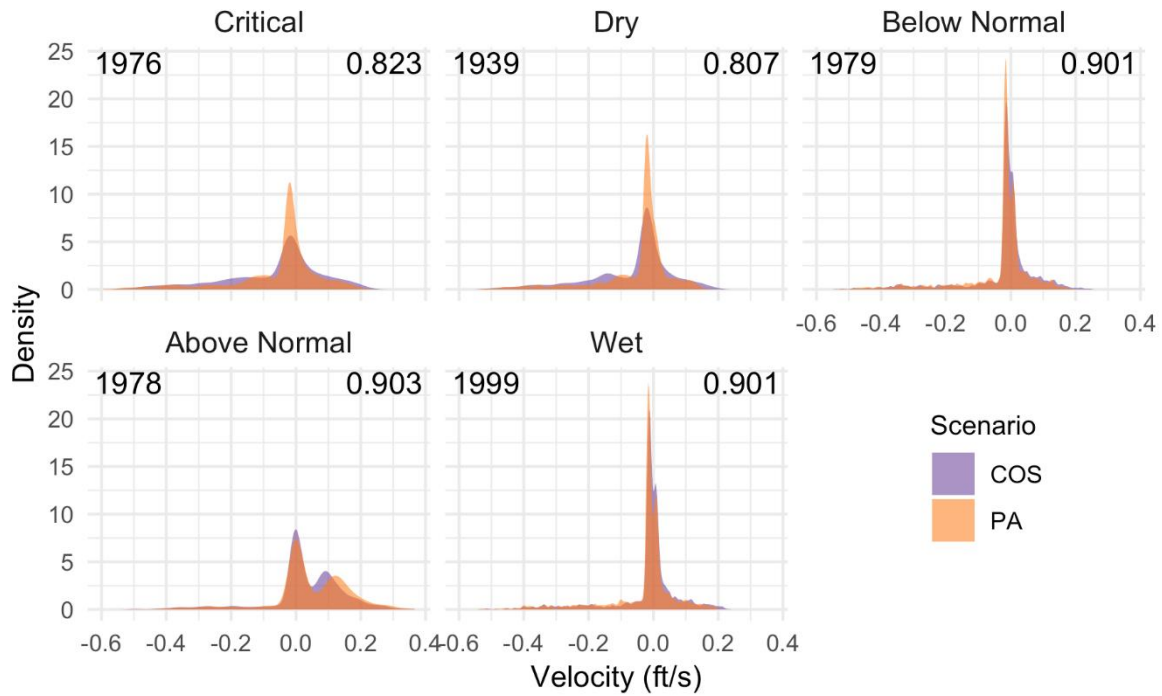


Jun – Aug

Old River near Woodward Island (Channel 95)

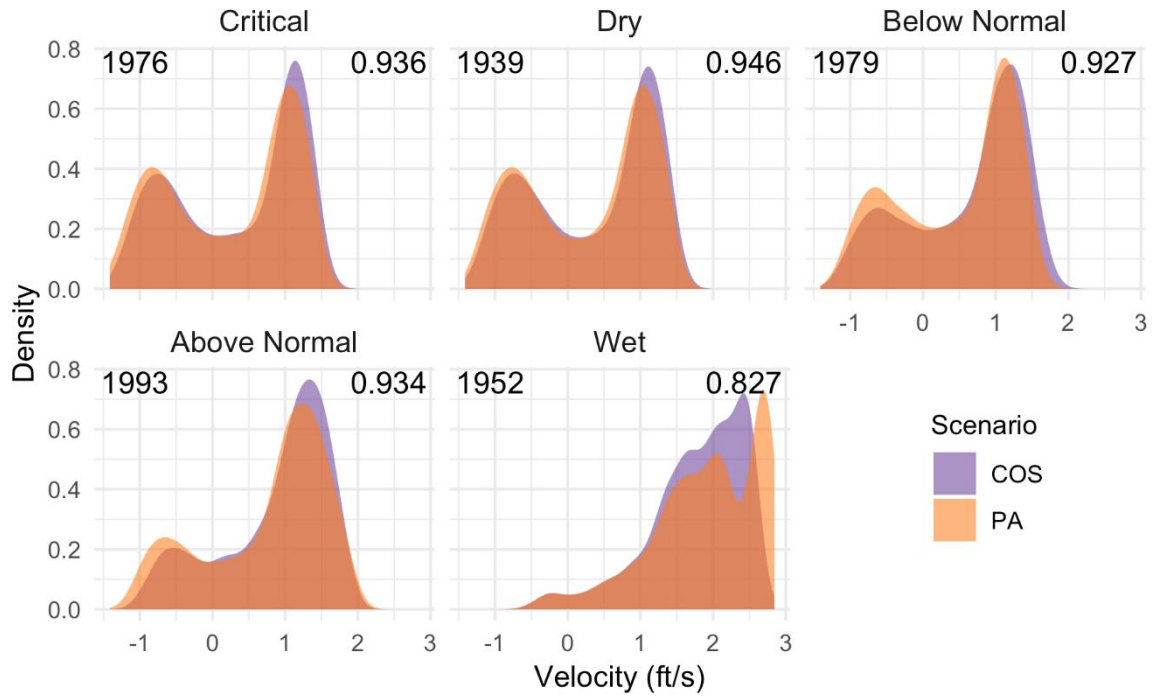


Old River upstream of facilities (Channel 78)

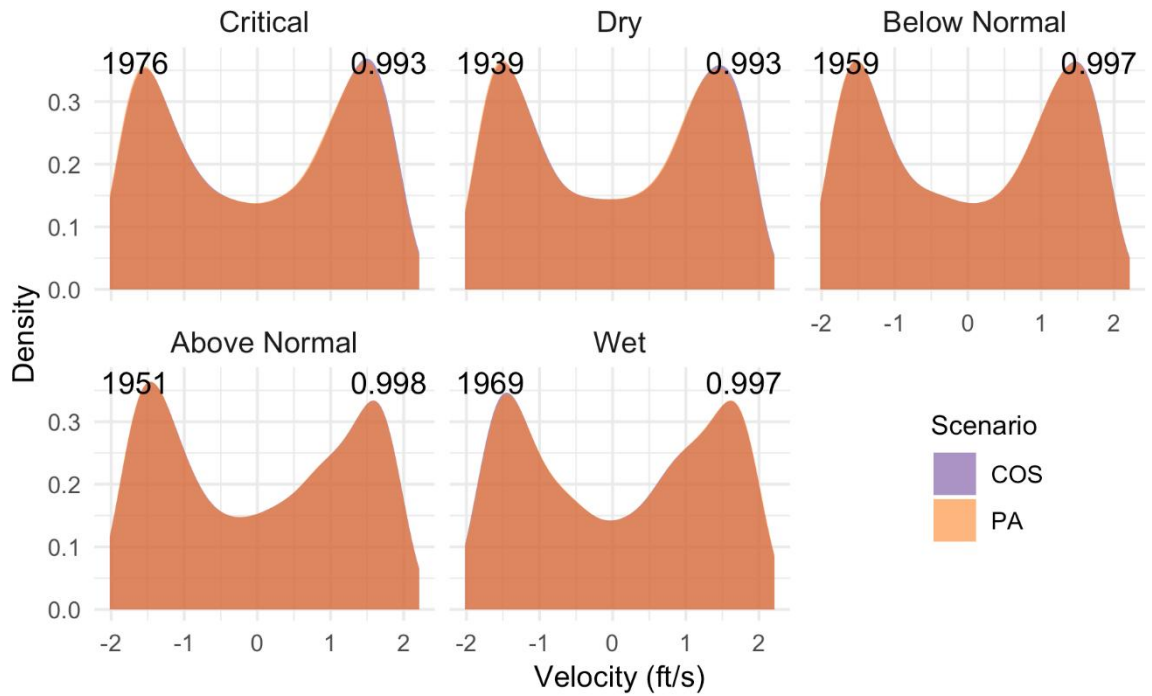


Jun -Aug

SJR near HOR (Channel 9)



SJR near Jersey Point (Channel 49)



Jun – Aug

SJR near Mokelumne (Channel 45)

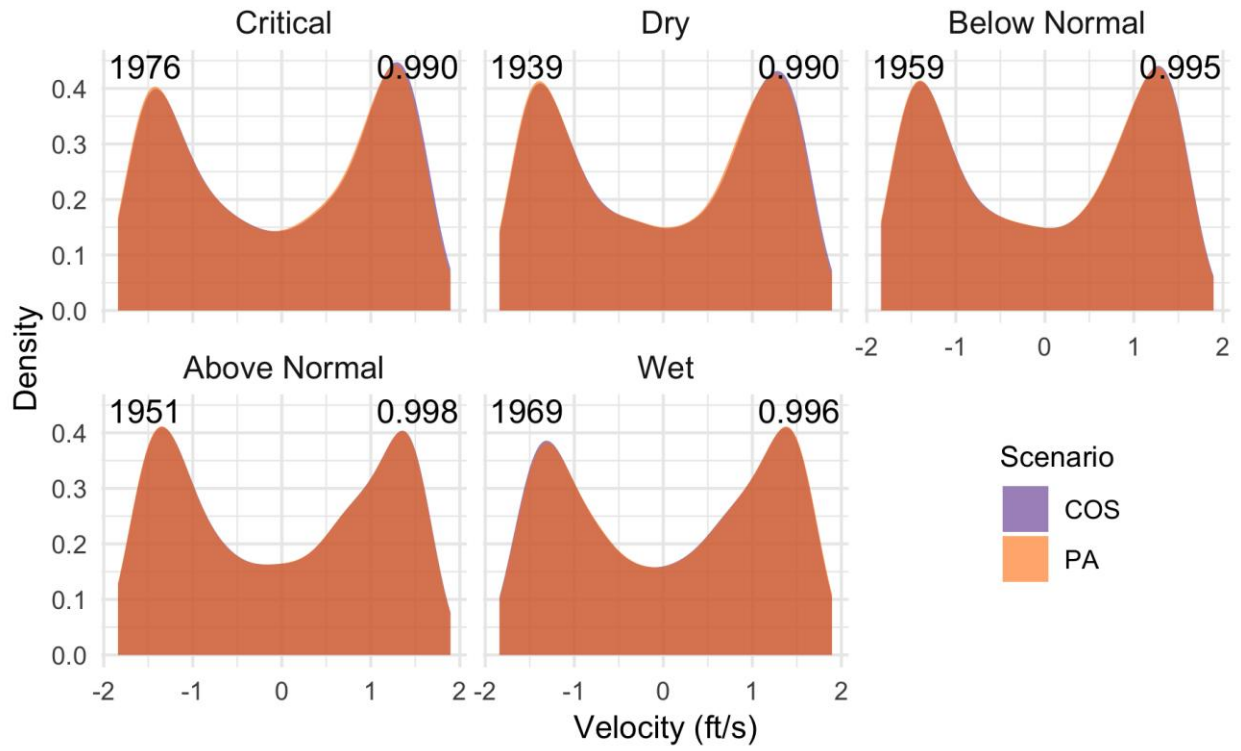


Figure 15. Detailed Conceptual Diagram of the Linkages Between Flows and Fishes in the Delta. (Source: Appendix B from Delta Independent Science Board 2015).

