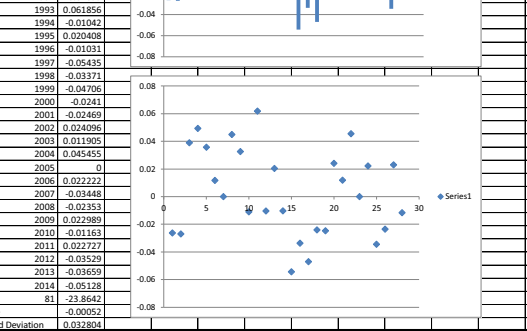
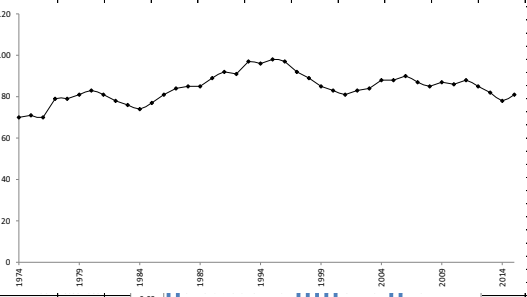
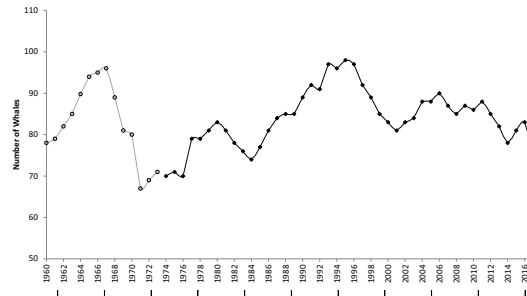


Year	Number SRKWs	Annual growth
1960	78	
1961	79	0.012558
1962	82	0.03595
1963	85	0.035294
1964	89.8	0.053452
1965	94	0.044681
1966	95	0.010526
1967	96	0.010817
1968	89	-0.07865
1969	81	-0.09877
1970	80	-0.0125
1971	67	-0.19403
1972	69	0.028986
1973	71	0.028169
1974	70	-0.01429
1975	71	0.014085
1976	70	-0.01429
1977	79	0.113924
1978	79	0
1979	81	0.024691
1980	83	0.024096
1981	81	-0.02469
1982	78	-0.03846
1983	76	-0.02632
1984	74	-0.02703
1985	77	0.018961
1986	81	0.049383
1987	84	0.035714
1988	85	0.011765
1989	85	0
1990	89	0.045944
1991	92	0.032609
1992	91	-0.01099
1993	97	0.061856
1994	96	-0.01042
1995	98	0.020408
1996	97	-0.01031
1997	92	-0.05435
1998	89	-0.03371
1999	85	-0.04706
2000	83	-0.0241
2001	81	-0.02469
2002	83	0.024096
2003	84	0.011905
2004	88	0.045455
2005	88	0
2006	90	0.022222
2007	87	-0.03448
2008	85	-0.02353
2009	87	0.022989
2010	86	-0.01163
2011	88	0.022727
2012	85	-0.03529
2013	82	-0.03659
2014	78	-0.05128
2015	81	0.037037
2016	83	0.02469
2017	76	-0.08462
2018	75	-0.01316
		0.022222
		-0.03448
		-0.02353
		0.022989
		-0.01163
		0.022727
		-0.03529
		-0.03659
		-0.05128
		-23.8642
	Average	-0.00052
	Standard Deviation	0.032804



73	252		19	96
131	14		9	9
<u>48</u>	9		49	3
252	7		2	4
	16		<u>17</u>	<u>112</u>
	<u>11</u>	81.5534	<u>96</u>	
	309			

Overall May-Sept= 82 percent Chinook

May-June	86
July-Sept	81

Checking the June, July, Aug in just SJI area-- they said >90 percent

49	127	0.869863 if use all sample types	
21	3		
25	3	49	95
17	4	21	3
4	3	<u>25</u>	3
<u>11</u>	2	<u>95</u>	4
127	<u>4</u>		3
	146		<u>1</u>
			109

Monthlys:

June	0.894737
July	0.959184
Aug	0.905405

	22	170
	31	5
	1	2
	21	4
85.71429	25	6
	27	16
	4	1
	11	7
	<u>28</u>	<u>211</u>
	170	

80.56872

0.87156 if use only S/T samples

	21	0.925926
	<u>4</u>	
	25	