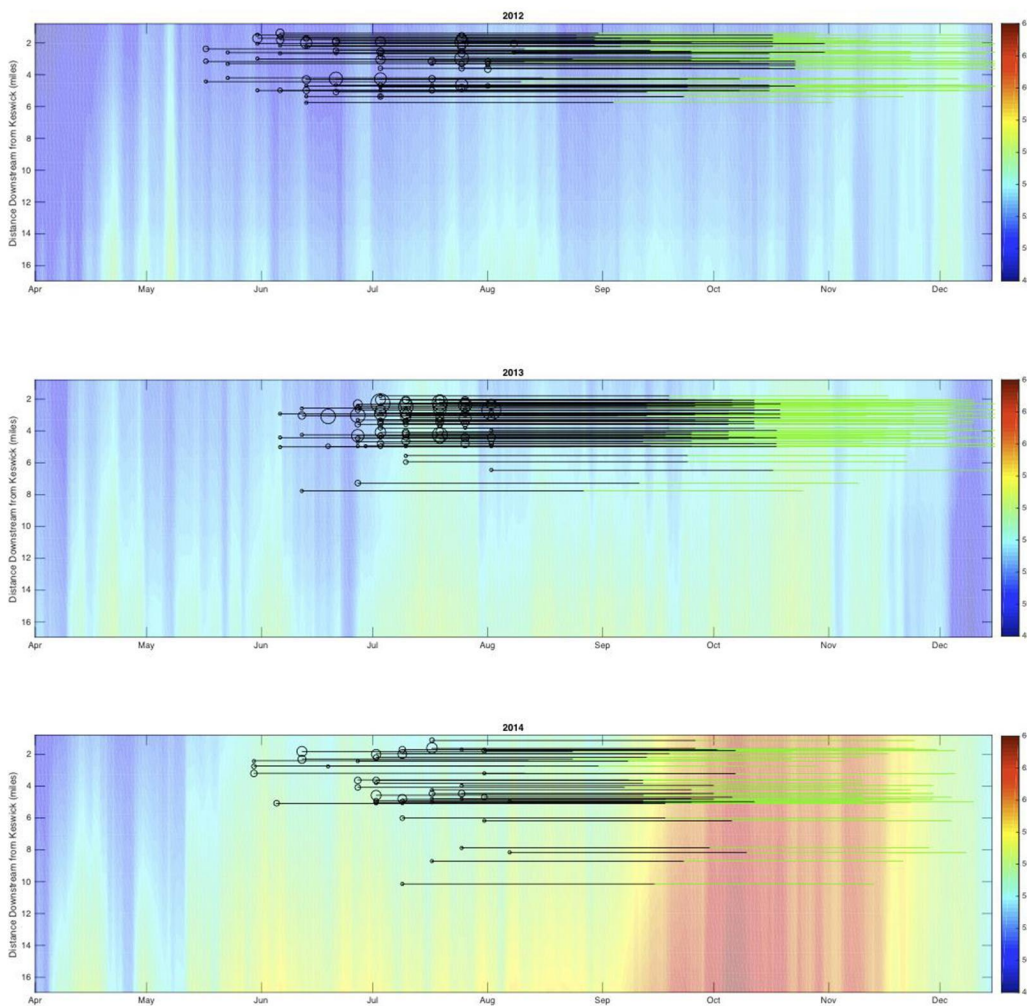


From: Evan Sawyer - NOAA Federal <evan.sawyer@noaa.gov>
Sent: Friday, May 3, 2019 1:24 PM
To: Miles Daniels - NOAA Affiliate
Cc: Eric Danner - NOAA Federal; Garwin Yip - NOAA Federal; Cathy Marcinkevage - NOAA Federal
Subject: ROCON Raft figures of temp landscapes 2015 (and 2014?)

Hi Miles,

I'm looking for something similar to the figure below but for 2015 (and maybe 2014). As we discussed including a line for the 56°F isotherm would be good.



Thanks,
Evan

--
Evan Bing Sawyer,
Natural Resource Management Specialist
NOAA Fisheries West Coast Region
U.S. Department of Commerce
Office: (916) 930-3656
Evan.Sawyer@noaa.gov

