

---

**From:** Miles Daniels - NOAA Affiliate <miles.daniels@noaa.gov>  
**Sent:** Friday, May 3, 2019 3:23 PM  
**To:** Evan Sawyer - NOAA Federal  
**Cc:** Eric Danner - NOAA Federal; Garwin Yip - NOAA Federal; Cathy Marcinkevage - NOAA Federal  
**Subject:** Re: ROCON Raft figures of temp landscapes 2015 (and 2014?)

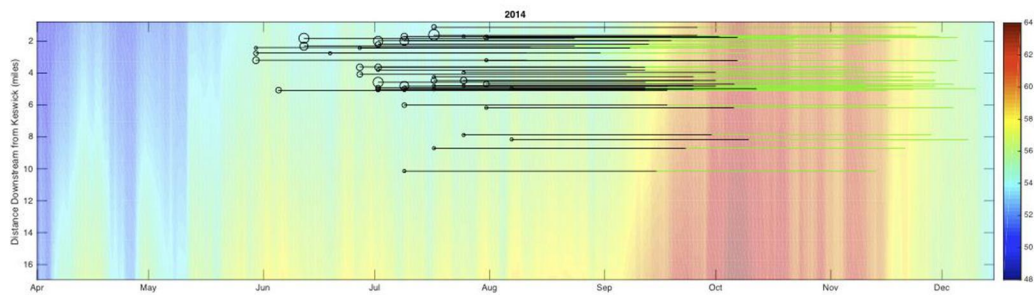
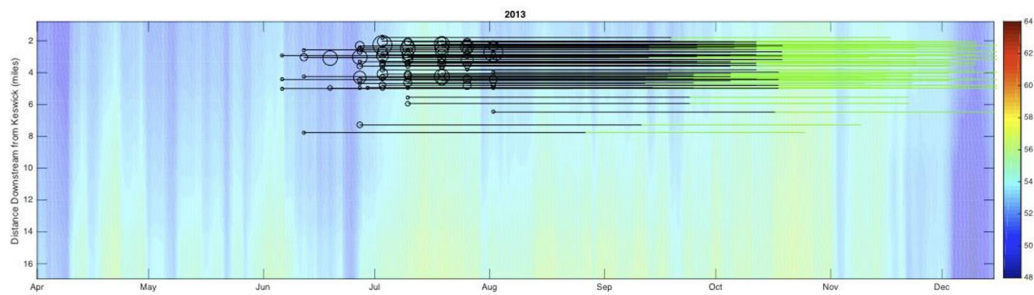
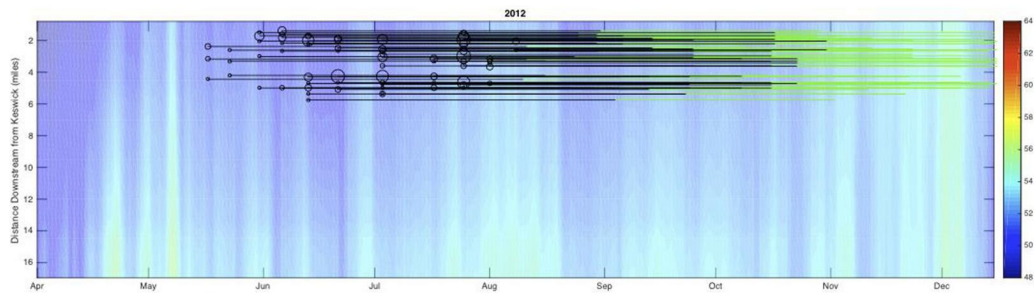
Hi Evan,

Attached are temperature landscape plots for 2015. These show dates redds were deposited, estimated time till emergence, and the 56F isoline for daily average river temperature. Since the design of these plots are different from the version in your email, I also included years 2012-2014 in case you needed those. In addition to the temperature landscape, the egg-survival landscapes are also included.

Please let me know if you want any changes made to these,  
Miles

On Fri, May 3, 2019 at 1:24 PM Evan Sawyer - NOAA Federal <[evan.sawyer@noaa.gov](mailto:evan.sawyer@noaa.gov)> wrote:  
Hi Miles,

I'm looking for something similar to the figure below but for 2015 (and maybe 2014). As we discussed including a line for the 56°F isotherm would be good.



Thanks,  
Evan

--  
Evan Bing Sawyer,  
Natural Resource Management Specialist  
NOAA Fisheries West Coast Region  
U.S. Department of Commerce  
Office: (916) 930-3656  
[Evan.Sawyer@noaa.gov](mailto:Evan.Sawyer@noaa.gov)  
[www.westcoast.fisheries.noaa.gov](http://www.westcoast.fisheries.noaa.gov)



--  
Miles Daniels, Ph.D.  
Assistant Project Scientist  
University of California, Santa Cruz  
Phone: 831-420-3946