

# **2010 Sturgeon Fishing Report Card: Preliminary Data Report**

Jason DuBois, Tim Matt, and Teresa MacColl

California Department of Fish and Game  
Bay Delta Region (East)  
4001 North Wilson Way  
Stockton, CA 95205

20 April 2011

## Summary

The 2010 Sturgeon Fishing Report Card (Card) was printed using Bay-Delta Sport Fishing Enhancement Stamp funds and then issued to any angler at no charge. Card data were managed using Sport Fish Restoration Act and Interagency Ecological Program funds.

One hundred forty thousand (140,000) Cards were printed at a cost of \$18,514 including tax and surcharge. Approximately 67,000 Cards were issued, of which 6,611 were returned to the Department and 1,628 of those Cards had data on sturgeon catch.

Anglers released 151 green sturgeon, retained 1,322 white sturgeon, and released 4,124 white sturgeon. Catch was 10-16% of the total sturgeon catch (N = 5,670) for each of the following months: January; February; March; April; November; and December. Catch for all other months each was  $\leq 7\%$  of the total catch.

Anglers reported total length measurements for 22 green sturgeon (range 15-72 inches, average 40.0 inches). Of the white sturgeon retained, anglers reported total length measurements for 1,319 (range 28-72 inches<sup>1</sup>, average 54.8 inches). Of the white sturgeon released, anglers reported total length measurement for 731 (range 3-102 inches, average 42.4 inches).

Catch of green sturgeon was greatest in the Sacramento River from Rio Vista to Chipps Island and in Suisun Bay. Catch of white sturgeon was greatest in Suisun Bay and in the Sacramento River from Rio Vista to Chipps Island.

## Introduction

This report summarizes data from the 2010 California Sturgeon Fishing Report Card (Card). The Card became part of a suite of sport fishing regulations in March 2007 that was intended to protect California's year-round white sturgeon fishery while increasing protections for the federally-threatened green sturgeon population and adding resiliency to the conservation-dependent white sturgeon population.

The 2010 Card was distributed to any angler at no charge and was required of every angler — including minors, anglers fishing only from piers, and anglers fishing on “free fishing” days — who fished for and retained or released a sturgeon in California.

Cards were printed using Bay-Delta Sport Fishing Enhancement Stamp funds. Sport Fish Restoration Act and Interagency Ecological Program funds were used to manage Card data and prepare this report.

Cards included fields for contact information, retained fish, and released fish (Appendix 1). Changes to the 2010 Card were (1) fields for anglers to record the Fish and Game disc tag number in the event the angler caught a tagged fish and (2) a box to mark if the angler did not fish for sturgeon. To aid the Department's efforts to reduce illegal commercialization of sturgeon and to enforce the daily and annual bag limits on white sturgeon, the Cards included detachable single-use serially-numbered Card-specific tags to be placed on fish retained by anglers.

Information on catch of sturgeon from 2010 Cards is complementary to on-going research conducted by the Department and others and will be used in planned articles and technical reports. Future year-specific California Sturgeon Fishing Report Card data reports will include a bibliography of documents that used Card data.

## Card Distribution and Return

One hundred forty thousand (140,000) Cards were printed at a cost of \$18,515 (including tax and surcharge) then distributed beginning in late 2009 to Department offices and licensed sales

---

<sup>1</sup> See notes 1 and 2 in “Length Data” section

agents using the License and Revenue Branch “steelhead card distribution list”. Approximately 67,000 Cards were issued to anglers.

Anglers began returning Cards almost immediately after distribution. The few Cards returned during preparation of this report are not described here. Six thousand six hundred eleven (6,611) Cards were returned of which 3,688 had no data (effort but no catch), 1,295 did not fish (no effort), and 1,628 had data on sturgeon catch.

### Angler Data

The Card included fields for general, personal, and contact information, as well as for catch data and — if applicable — reward disc tag number (Appendix 1). Contact information included California fishing license number, street address, phone, and e-mail.

One hundred seventy-two (172) anglers supplied no California fishing license number, or submitted illegible or non-standard license numbers. Seven of these anglers were specifically described as “under age”, “minor”, or under the age of 16.

### Catch Data

The Card contained three sections for reporting sturgeon catch (1) Sturgeon Retained, (2) Sturgeon Released (no reward disc present), and (3) Sturgeon Released (reward disc present). These sections included fields to report month, day, location, and reward disc number. The “Sturgeon Retained” section also contained a field for reporting length and reminded anglers only white sturgeon 44–66 inches total length may be retained. The “Sturgeon Released (no reward disc present)” section also contained check boxes for species identification that some anglers also used to report fish length.

Twenty-three<sup>2</sup> anglers each caught one tagged white sturgeon and one angler caught two tagged white sturgeon. Of the 25 tagged white sturgeon, seven were released and 18 were kept. No tagged green sturgeon were reported.

*Catch data* — Anglers reported releasing 151 green sturgeon, while keeping 1,322 white sturgeon and releasing 4,124 white sturgeon (Table 1). Seventy-three (73) sturgeon were not identified to species.

**Table 1. White and green sturgeon catch reported on 2010 Cards**

|                      |              | White Sturgeon | Green Sturgeon | Unidentified Sturgeon | Overall Total |
|----------------------|--------------|----------------|----------------|-----------------------|---------------|
| <b>Retained</b>      | Measured     | 1,319          | 0              | 0                     | 1,319         |
|                      | Not Measured | 3              | 0              | 0                     | 3             |
|                      | Total        | 1,322          | 0              | 0                     | 1,322         |
| <b>Released</b>      | Measured     | 731            | 22             | 3                     | 756           |
|                      | Not Measured | 3,393          | 129            | 70                    | 3,592         |
|                      | Total        | 4,124          | 151            | 73                    | 4,348         |
| <b>Overall Total</b> |              | 5,446          | 151            | 73                    | 5,670         |

One thousand (1,000) anglers reported retaining white sturgeon (Table 2; average of 1.3 sturgeon). Fifty-nine anglers retained the limit of three white sturgeon.

One thousand thirty-six (1,036) anglers reported catching and releasing white sturgeon (Table 2). Of these anglers, 88 each released 10-50 fish, and one angler released 52 fish.

<sup>2</sup> One angler just wrote “yes” in the “Reward Disk #” section but did not supply a tag number

One hundred fourteen (114) anglers reported releasing green sturgeon (Table 2; average of 1.3 sturgeon). Seventeen anglers each released 2-4 fish. One angler reported releasing 9 green sturgeon.

**Table 2. Summary statistics for per-angler catch from 2010 Cards with catch data**

|                         | Number of Anglers | Number of Sturgeon | Maximum Number of Sturgeon per Angler | Average Number of Sturgeon per Angler |
|-------------------------|-------------------|--------------------|---------------------------------------|---------------------------------------|
| Retained White Sturgeon | 1,000             | 1,322              | 3                                     | 1.3                                   |
| Released White Sturgeon | 1,036             | 4,124              | 52                                    | 4.0                                   |
| Green Sturgeon          | 114               | 151                | 9                                     | 1.3                                   |
| Unidentified Sturgeon   | 21                | 73                 | 17                                    | 3.5                                   |

Of the 1,607 anglers who caught white sturgeon, 216<sup>3</sup> anglers retained and released white sturgeon on the same day (average = 1.7 anglers/day, maximum = 5 anglers/day). Of those 216 anglers, one released seven in the same day. Because the length of sturgeon released was not a required field on the Card, the number of white sturgeon voluntarily conserved could not be calculated.

*Length data* — Green sturgeon total length ranged 15.0-72.0 inches and averaged 40.3 inches (Figure 1). Retained white sturgeon total length ranged 28.0-72.0 (see Note 1 and Note 2) inches and averaged 54.8 inches (Figure 2). Released white sturgeon total length ranged 3.0-102.0 inches and averaged 42.4 inches (Figure 3).

Lengths of retained white sturgeon were skewed slightly to the lower end of the slot limit (46-66 inches total length; Figure 2). Of the released white sturgeon for which a length measurement was reported, 206 were within the slot limit (Figure 3), the majority was below the slot limit (N = 438), and 87 were above the slot limit.

Note 1: Length was not recorded for three retained white sturgeon.

Note 2: Min and max of range were the only two lengths of retained white sturgeon not within the legal-sized slot limit (46–66 inches TL). Both lengths were legible and confirmed as accurate entries in the database. The angler reporting “28” also kept one white sturgeon of 52 inches TL and released eight (seven whites and one green) over several days with no lengths reported. The angler reporting “72” recorded on the Card “6” (appearing on the Card as possibly intending to write ‘66’); this angler also released one white sturgeon (no length) on a separate day.

<sup>3</sup> Six individual anglers retained and released white sturgeon on three separate days, 25 individual anglers retained and released white sturgeon on two separate days, and 148 individual anglers retained and released white sturgeon on one day.

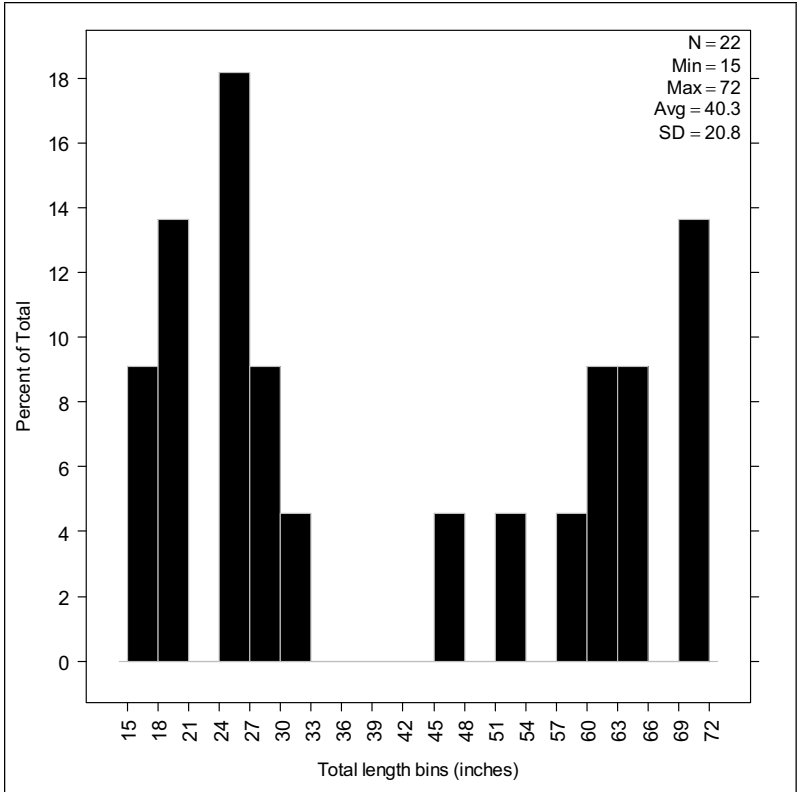


Figure 1. Length frequency distribution of green sturgeon reported on 2010 Cards

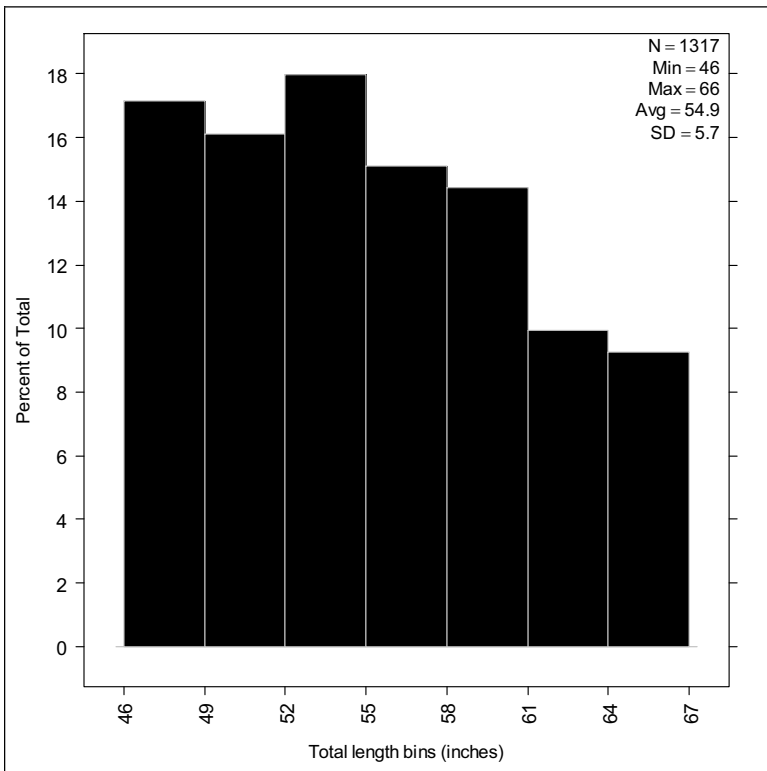
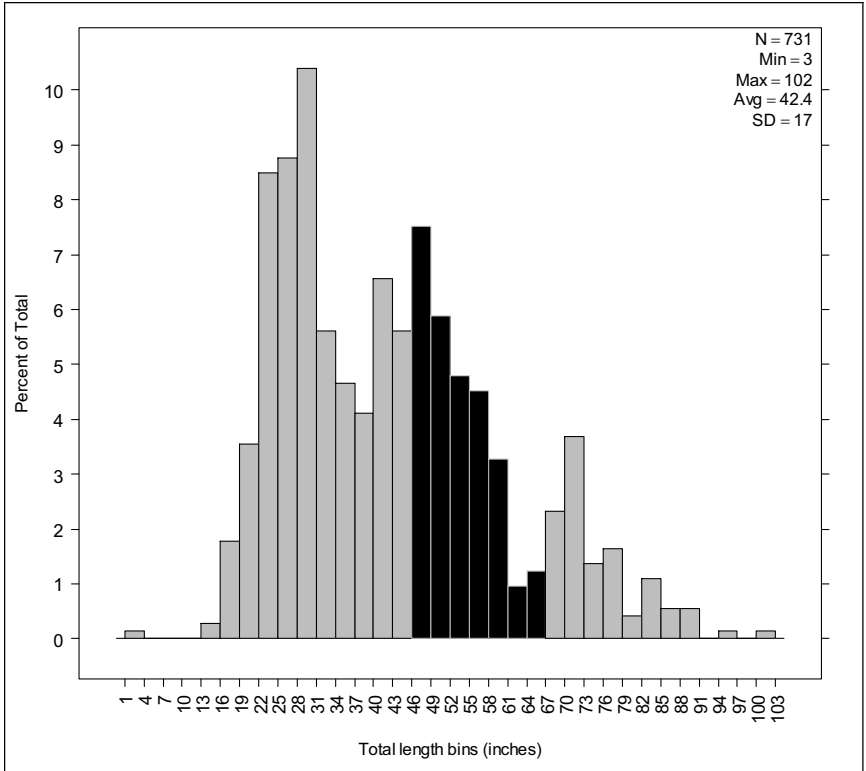


Figure 2. Length frequency distribution of white sturgeon retained as reported on 2010 Cards; single length measurements of "28" and 72" not shown



**Figure 3. Length frequency distribution of white sturgeon released as reported on 2010 Cards (dark bars denote slot limit of 46–66 inches TL)**

*Seasonality* — Catch of green sturgeon and white sturgeon was greatest during the winter and spring (Table 3). Catch per month ranged approximately 10-16% of the total sturgeon catch (N = 5,670) for each of the following months: January; February; March; April; November; and December (Table 3).

**Table 3. Green sturgeon and white sturgeon catch per month and per season (Winter=December-February, Spring=March-May, Summer=June-August, Fall=September-November)**

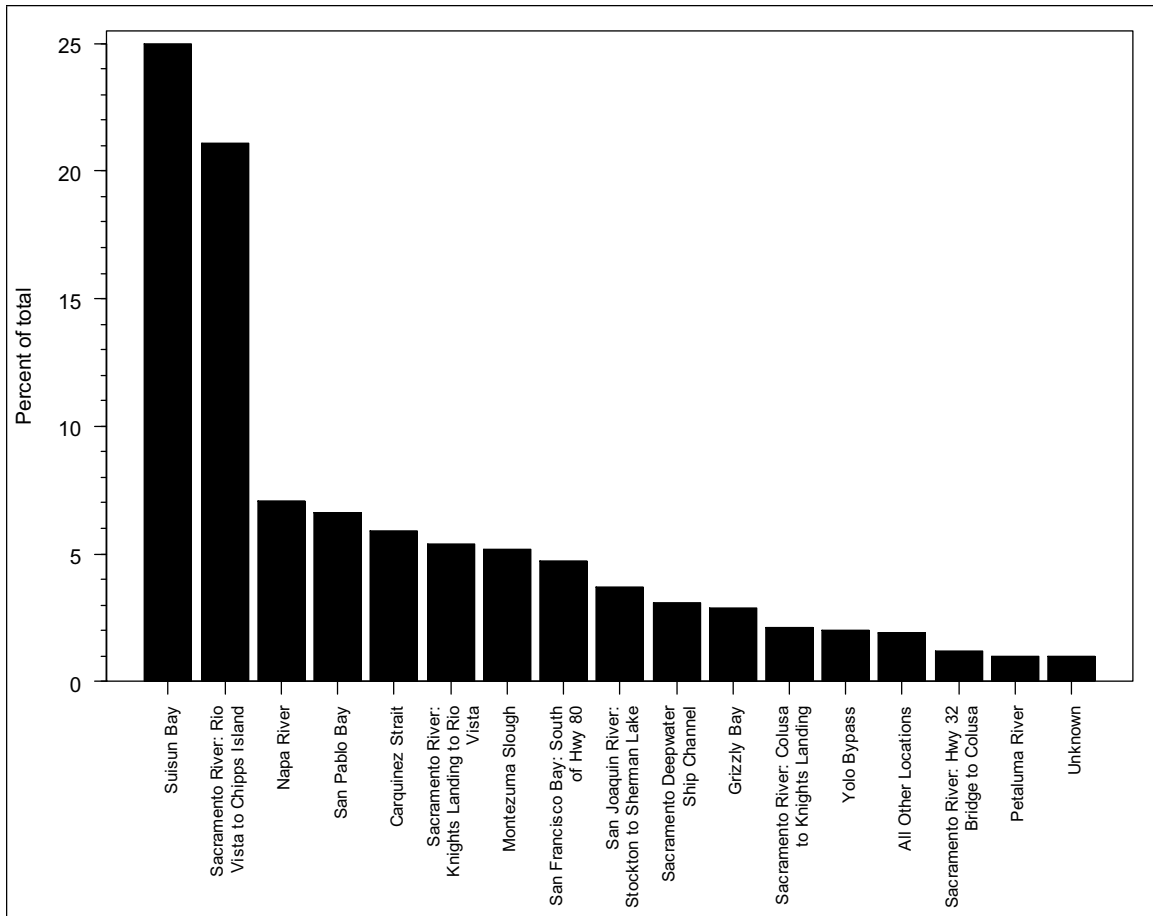
| Month            | White Sturgeon | Green Sturgeon | Unknown Sturgeon | Catch Total | Percent of Total |
|------------------|----------------|----------------|------------------|-------------|------------------|
| <i>Not given</i> | 4              |                |                  | 4           | 0.1%             |
| January          | 738            | 12             | 2                | 752         | 13.3%            |
| February         | 795            | 9              | 8                | 812         | 14.3%            |
| March            | 858            | 16             | 17               | 891         | 15.7%            |
| April            | 584            | 15             | 12               | 611         | 10.8%            |
| May              | 303            | 4              | 1                | 308         | 5.4%             |
| June             | 144            | 5              | 11               | 160         | 2.8%             |
| July             | 147            | 4              | 4                | 155         | 2.7%             |
| August           | 108            | 5              | 1                | 114         | 2.0%             |
| September        | 149            | 3              | 1                | 153         | 2.7%             |
| October          | 366            | 24             | 7                | 397         | 7.0%             |
| November         | 598            | 28             | 7                | 633         | 11.2%            |
| December         | 652            | 26             | 2                | 680         | 12.0%            |
| Totals           | 5,446          | 151            | 73               | 5,670       |                  |

| Season* | White Sturgeon | Green Sturgeon | Unknown Sturgeon | Catch Total | Percent of Total |
|---------|----------------|----------------|------------------|-------------|------------------|
| Winter  | 2,185          | 47             | 12               | 2,244       | 39.6%            |
| Spring  | 1,745          | 35             | 30               | 1,810       | 31.9%            |
| Summer  | 399            | 14             | 16               | 429         | 7.6%             |
| Fall    | 1,113          | 55             | 15               | 1,183       | 20.9%            |
| Totals  | 5,442          | 151            | 73               | 5,666       |                  |

\*does not include fish from month "Not given"

*Location data* — Sturgeon were collected from 26<sup>4</sup> of the 28 locations listed on the Card (Figure 4). Locations where 1-50 sturgeon were collected were grouped as "All Other Locations" (N = 11). Location codes were either not specified or were illegible (grouped as "Unknown"; Figure 4) for 22 retained white sturgeon, 30 released white sturgeon, one green, and one unidentified sturgeon.

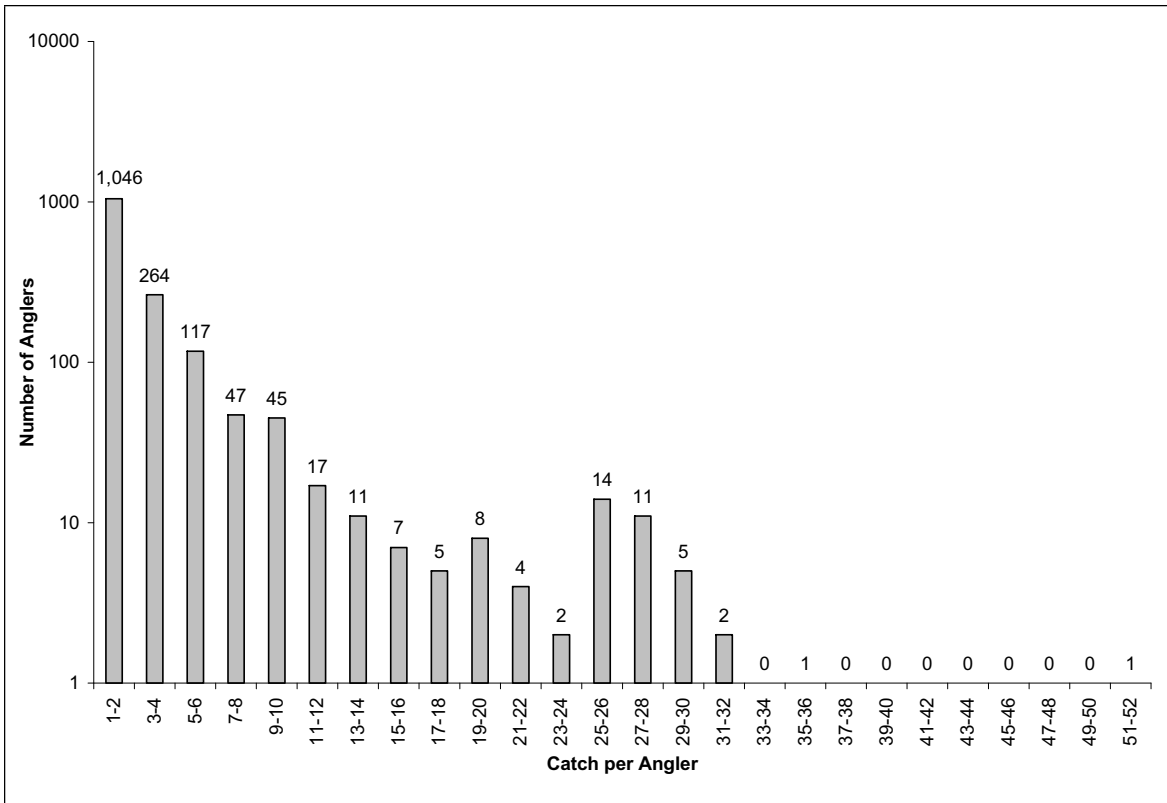
<sup>4</sup> Absent were locations "1B" – Sac River (Red Bluff to Hwy 32 bridge) and "24" – Pacific Ocean (Point Sur to San Diego)



**Figure 4. Percent of total catch of all sturgeon by location as reported on 2010 Cards**

Catch of green sturgeon was greatest in the Sacramento River from Rio Vista to Chipps Island and from Suisun Bay (Table 4). Catch of white sturgeon was greatest from Suisun Bay and in the Sacramento River from Rio Vista to Chipps Island (Tables 5 and 6). Sixty-five (65) percent of anglers who reported catching white sturgeon (N = 1,607), caught 1-2 fish each (Figure 5).





**Figure 5. Frequency distribution of white sturgeon catch per angler as reported on 2010 Cards (numbers of anglers above each column)**

Table 4. Green sturgeon catch and associated length by location and season as provided on 2010 Cards. The five locations where total catch was highest were ranked. Seasons were defined as follows: Winter=December-February, Spring= March-May, Summer=June-August, Fall=September-November

| Location Code | Location Name                                  | Rank of Catch | Number of Anglers | No Date of Capture | Winter Catch | Spring Catch | Summer Catch | Fall Catch | Total Catch | Number Measured | Minimum Length (inches) | Maximum Length (inches) | Average Length (inches) |
|---------------|--|---------------|-------------------|--------------------|--------------|--------------|--------------|------------|-------------|-----------------|-------------------------|-------------------------|-------------------------|
|               | Unknown  |               | 1                 | -                  | -            | 1            | -            | -          | 1           | 1               | 72                      | 72                      | 72.0                    |
| 1A            | Sacramento River: Upstream of Red Bluff        |               | -                 | -                  | -            | -            | -            | -          | -           | -               |                         |                         |                         |
| 1B            | Sacramento River: Red Bluff to Hwy 32 bridge   |               | -                 | -                  | -            | -            | -            | -          | -           | -               |                         |                         |                         |
| 1C            | Sacramento River: Hwy 32 bridge to Colusa      |               | 1                 | -                  | -            | 1            | -            | -          | 1           | -               |                         |                         |                         |
| 2             | Sacramento River: Colusa to Knights Landing    |               | 2                 | -                  | 2            | -            | -            | -          | 2           | -               |                         |                         |                         |
| 3             | Sacramento River: Knights Landing to Rio Vista |               | 5                 | -                  | 1            | 2            | -            | 2          | 5           | 1               | 70                      | 70                      | 70.0                    |
| 4             | Sacramento River: Rio Vista to Chipps Island   | 1             | 40                | -                  | 19           | 8            | 4            | 28         | 59          | 8               | 17                      | 70                      | 42.5                    |
| 5             | Feather River                                  |               | 1                 | -                  | 1            | -            | -            | -          | 1           | -               |                         |                         |                         |
| 6             | American River                                 |               | -                 | -                  | -            | -            | -            | -          | -           | -               |                         |                         |                         |
| 7             | Sacramento Deepwater Ship Channel              |               | 3                 | -                  | 2            | -            | -            | 2          | 4           | 2               | 24                      | 27                      | 25.5                    |
| 8             | Yolo Bypass                                    |               | -                 | -                  | -            | -            | -            | -          | -           | -               |                         |                         |                         |
| 9             | Montezuma Slough                               |               | 3                 | -                  | 1            | 2            | -            | -          | 3           | -               |                         |                         |                         |
| 10            | Napa River                                     |               | 8                 | -                  | 2            | 5            | -            | 1          | 8           | 1               | 27                      | 27                      | 27.0                    |
| 11            | Petaluma River                                 |               | -                 | -                  | -            | -            | -            | -          | -           | -               |                         |                         |                         |
| 12            | San Joaquin River: Upstream of HWY 140 bridge  |               | 1                 | -                  | 1            | -            | -            | -          | 1           | -               |                         |                         |                         |
| 13            | San Joaquin River: HWY 140 bridge to Stockton  |               | 1                 | -                  | -            | 2            | -            | -          | 2           | 2               | 26                      | 31                      | 28.5                    |
| 14            | San Joaquin River: Stockton to Sherman Lake    |               | 3                 | -                  | -            | 3            | -            | 2          | 5           | 1               | 46                      | 46                      | 46.0                    |
| 15            | Old River                                      |               | -                 | -                  | -            | -            | -            | -          | -           | -               |                         |                         |                         |
| 16            | San Pablo Bay                                  | 3             | 9                 | -                  | 9            | 3            | -            | -          | 12          | -               |                         |                         |                         |
| 17            | Carquinez Strait                               | 4             | 9                 | -                  | 3            | 1            | 2            | 4          | 10          | -               |                         |                         |                         |
| 18            | Suisun Bay                                     | 2             | 25                | -                  | 5            | 7            | 7            | 7          | 26          | 6               | 15                      | 60                      | 37.3                    |
| 19            | Grizzly Bay                                    |               | 1                 | -                  | 1            | -            | -            | -          | 1           | -               |                         |                         |                         |
| 20            | San Francisco Bay: North of HWY 80             |               | -                 | -                  | -            | -            | -            | -          | -           | -               |                         |                         |                         |
| 21            | San Francisco Bay: South of HWY 80             | 5             | 1                 | -                  | -            | -            | -            | 9          | 9           | -               |                         |                         |                         |
| 22            | Pacific Ocean: North of Golden Gate Bridge     |               | 1                 | -                  | -            | -            | 1            | -          | 1           | -               |                         |                         |                         |
| 23            | Pacific Ocean: Golden Gate Bridge to Point Sur |               | -                 | -                  | -            | -            | -            | -          | -           | -               |                         |                         |                         |
| 24            | Pacific Ocean: Point Sur to San Diego          |               | -                 | -                  | -            | -            | -            | -          | -           | -               |                         |                         |                         |
| 25            | Any reservoir or lake                          |               | -                 | -                  | -            | -            | -            | -          | -           | -               |                         |                         |                         |
| 26            | Klamath River                                  |               | -                 | -                  | -            | -            | -            | -          | -           | -               |                         |                         |                         |
| <b>Totals</b> |  |               | <b>115*</b>       | <b>0</b>           | <b>47</b>    | <b>35</b>    | <b>14</b>    | <b>55</b>  | <b>151</b>  | <b>22</b>       |                         |                         |                         |

\* = 1 angler fished and caught a green sturgeon at 2 different locations, 114 anglers fished and caught a green sturgeon at 1 location

Table 5. Retained white sturgeon catch and associated length by location and season as provided on 2010 Cards. The five locations where total catch was highest were ranked. Seasons were defined as follows: Winter=December-February, Spring= March-May, Summer=June-August, Fall=September-November

| Location Code | Location Name                                  | Rank of Catch | Number of Anglers | No Date of Capture | Winter Catch | Spring Catch | Summer Catch | Fall Catch | Total Catch  | Number Measured | Minimum Length (inches) | Maximum Length (inches) | Average Length (inches) |
|---------------|--|---------------|-------------------|--------------------|--------------|--------------|--------------|------------|--------------|-----------------|-------------------------|-------------------------|-------------------------|
|               | Unknown  |               | 19                | -                  | 8            | 8            | 2            | 4          | 22           | 22              | 47                      | 66                      | 55.8                    |
| 1A            | Sacramento River: Upstream of Red Bluff        |               | 4                 | -                  | -            | 3            | 1            | -          | 4            | 4               | 49                      | 59                      | 55.0                    |
| 1B            | Sacramento River: Red Bluff to Hwy 32 bridge   |               | -                 | -                  | -            | -            | -            | -          | -            | -               | -                       | -                       | -                       |
| 1C            | Sacramento River: Hwy 32 bridge to Colusa      |               | 18                | -                  | 7            | 15           | -            | -          | 22           | 22              | 47                      | 65                      | 57.6                    |
| 2             | Sacramento River: Colusa to Knights Landing    |               | 41                | -                  | 11           | 35           | -            | -          | 46           | 46              | 48                      | 66                      | 60.0                    |
| 3             | Sacramento River: Knights Landing to Rio Vista | 3             | 115               | -                  | 57           | 72           | -            | 15         | 144          | 144             | 46                      | 66                      | 56.1                    |
| 4             | Sacramento River: Rio Vista to Chipps Island   | 2             | 176               | -                  | 75           | 55           | 6            | 90         | 226          | 226             | 46                      | 66                      | 54.2                    |
| 5             | Feather River                                  |               | -                 | -                  | -            | -            | -            | -          | -            | -               | -                       | -                       | -                       |
| 6             | American River                                 |               | -                 | -                  | -            | -            | -            | -          | -            | -               | -                       | -                       | -                       |
| 7             | Sacramento Deepwater Ship Channel              |               | 39                | -                  | 16           | 6            | 1            | 23         | 46           | 46              | 46                      | 65                      | 53.5                    |
| 8             | Yolo Bypass                                    |               | 22                | -                  | 14           | 11           | 1            | 3          | 29           | 29              | 46                      | 66                      | 58.6                    |
| 9             | Montezuma Slough                               |               | 51                | -                  | 21           | 20           | 9            | 9          | 59           | 59              | 46                      | 66                      | 55.1                    |
| 10            | Napa River                                     |               | 83                | -                  | 36           | 47           | 10           | 4          | 97           | 97              | 46                      | 72                      | 54.6                    |
| 11            | Petaluma River                                 |               | 20                | -                  | 6            | 14           | -            | -          | 20           | 18              | 46                      | 65                      | 53.9                    |
| 12            | San Joaquin River: Upstream of HWY 140 bridge  |               | 2                 | -                  | 1            | -            | -            | 2          | 3            | 3               | 50                      | 66                      | 60.3                    |
| 13            | San Joaquin River: HWY 140 bridge to Stockton  |               | -                 | -                  | -            | -            | -            | -          | -            | -               | -                       | -                       | -                       |
| 14            | San Joaquin River: Stockton to Sherman Lake    |               | 37                | -                  | 19           | 13           | 6            | 10         | 48           | 48              | 46                      | 65                      | 53.5                    |
| 15            | Old River                                      |               | 2                 | -                  | 2            | -            | -            | -          | 2            | 2               | 54                      | 60                      | 57.0                    |
| 16            | San Pablo Bay                                  | 5             | 85                | 1                  | 61           | 34           | 4            | 3          | 103          | 102             | 46                      | 66                      | 54.0                    |
| 17            | Carquinez Strait                               |               | 44                | 2                  | 16           | 27           | 6            | 5          | 56           | 56              | 46                      | 66                      | 54.9                    |
| 18            | Suisun Bay                                     | 1             | 198               | -                  | 85           | 78           | 19           | 65         | 247          | 247             | 28                      | 66                      | 53.9                    |
| 19            | Grizzly Bay                                    |               | 20                | -                  | 7            | 8            | -            | 7          | 22           | 22              | 46                      | 65                      | 54.5                    |
| 20            | San Francisco Bay: North of HWY 80             |               | 11                | -                  | 14           | 3            | 1            | -          | 18           | 18              | 47                      | 62                      | 53.9                    |
| 21            | San Francisco Bay: South of HWY 80             | 4             | 83                | -                  | 90           | 3            | -            | 11         | 104          | 104             | 46                      | 65                      | 54.9                    |
| 22            | Pacific Ocean: North of Golden Gate Bridge     |               | 1                 | -                  | -            | -            | 1            | -          | 1            | 1               | 57                      | 57                      | 57.0                    |
| 23            | Pacific Ocean: Golden Gate Bridge to Point Sur |               | 1                 | -                  | -            | 1            | -            | -          | 1            | 1               | 49                      | 49                      | 49.0                    |
| 24            | Pacific Ocean: Point Sur to San Diego          |               | -                 | -                  | -            | -            | -            | -          | -            | -               | -                       | -                       | -                       |
| 25            | Any reservoir or lake                          |               | 1                 | -                  | 1            | -            | -            | -          | 1            | 1               | 53                      | 53                      | 53.0                    |
| 26            | Klamath River                                  |               | 1                 | -                  | 1            | -            | -            | -          | 1            | 1               | 66                      | 66                      | 66.0                    |
| <b>Totals</b> |  |               | <b>1,074*</b>     | <b>3</b>           | <b>548</b>   | <b>453</b>   | <b>67</b>    | <b>251</b> | <b>1,322</b> | <b>1,319</b>    |                         |                         |                         |

\* = 2 anglers caught and retained fish at 3 different locations, 71 anglers caught and retained fish at 2 different locations, and 927 anglers caught and retained fish at 1 location

Table 6. Released white sturgeon catch and associated length by location and season as provided on 2010 Cards. The five locations where total catch was highest were ranked. Seasons were defined as follows: Winter=December-February, Spring= March-May, Summer=June-August, Fall=September-November

| Location Code | Location Name                                  | Rank of Catch | Number of Anglers | No Date of Capture | Winter Catch | Spring Catch | Summer Catch | Fall Catch | Total Catch  | Number Measured | Minimum Length (inches) | Maximum Length (inches) | Average Length (inches) |
|---------------|--|---------------|-------------------|--------------------|--------------|--------------|--------------|------------|--------------|-----------------|-------------------------|-------------------------|-------------------------|
|               | Unknown  |               | 21                | -                  | 12           | 5            | -            | 13         | 30           | 14              | 28                      | 85                      | 48.4                    |
| 1A            | Sacramento River: Upstream of Red Bluff        |               | 2                 | -                  | 1            | 1            | 1            | -          | 3            | 2               | 59                      | 72                      | 65.5                    |
| 1B            | Sacramento River: Red Bluff to Hwy 32 bridge   |               | -                 | -                  | -            | -            | -            | -          | -            | -               | -                       | -                       | -                       |
| 1C            | Sacramento River: Hwy 32 bridge to Colusa      |               | 17                | -                  | 14           | 20           | -            | 1          | 35           | 11              | 44                      | 88                      | 63.0                    |
| 2             | Sacramento River: Colusa to Knights Landing    |               | 29                | -                  | 20           | 41           | -            | -          | 61           | 5               | 65                      | 90                      | 74.2                    |
| 3             | Sacramento River: Knights Landing to Rio Vista |               | 82                | -                  | 66           | 70           | 2            | 17         | 155          | 19              | 14                      | 78                      | 51.8                    |
| 4             | Sacramento River: Rio Vista to Chipps Island   | 2             | 232               | -                  | 333          | 208          | 52           | 314        | 907          | 82              | 3                       | 84                      | 39.1                    |
| 5             | Feather River                                  |               | 1                 | -                  | -            | 1            | -            | -          | 1            | -               | -                       | -                       | -                       |
| 6             | American River                                 |               | 1                 | -                  | -            | 4            | -            | -          | 4            | -               | -                       | -                       | -                       |
| 7             | Sacramento Deepwater Ship Channel              |               | 46                | -                  | 61           | 15           | -            | 51         | 127          | 29              | 18                      | 72                      | 34.5                    |
| 8             | Yolo Bypass                                    |               | 27                | -                  | 42           | 17           | -            | 27         | 86           | 43              | 19                      | 72                      | 46.1                    |
| 9             | Montezuma Slough                               |               | 88                | -                  | 63           | 84           | 39           | 47         | 233          | 84              | 20                      | 102                     | 42.7                    |
| 10            | Napa River                                     | 3             | 122               | -                  | 117          | 131          | 28           | 21         | 297          | 31              | 21                      | 78                      | 36.2                    |
| 11            | Petaluma River                                 |               | 23                | -                  | 10           | 24           | 1            | -          | 35           | 8               | 22                      | 78                      | 55.0                    |
| 12            | San Joaquin River: Upstream of HWY 140 bridge  |               | 3                 | -                  | 5            | -            | -            | 2          | 7            | -               | -                       | -                       | -                       |
| 13            | San Joaquin River: HWY 140 bridge to Stockton  |               | 5                 | -                  | 4            | 11           | 4            | -          | 19           | 10              | 48                      | 84                      | 56.3                    |
| 14            | San Joaquin River: Stockton to Sherman Lake    |               | 47                | -                  | 57           | 47           | 8            | 46         | 158          | 14              | 24                      | 69                      | 33.2                    |
| 15            | Old River                                      |               | 4                 | -                  | 8            | 2            | -            | 1          | 11           | 2               | 45                      | 50                      | 47.5                    |
| 16            | San Pablo Bay                                  | 5             | 90                | -                  | 144          | 83           | 3            | 20         | 250          | 25              | 14                      | 86                      | 49.5                    |
| 17            | Carquinez Strait                               | 4             | 72                | -                  | 82           | 115          | 38           | 28         | 263          | 26              | 24                      | 73                      | 45.0                    |
| 18            | Suisun Bay                                     | 1             | 266               | 1                  | 410          | 351          | 148          | 218        | 1,128        | 236             | 17                      | 94                      | 36.6                    |
| 19            | Grizzly Bay                                    |               | 53                | -                  | 61           | 28           | 5            | 40         | 134          | 21              | 20                      | 90                      | 48.0                    |
| 20            | San Francisco Bay: North of HWY 80             |               | 5                 | -                  | 16           | 6            | -            | -          | 22           | -               | -                       | -                       | -                       |
| 21            | San Francisco Bay: South of HWY 80             |               | 41                | -                  | 111          | 28           | -            | 16         | 155          | 69              | 22                      | 89                      | 52.2                    |
| 22            | Pacific Ocean: North of Golden Gate Bridge     |               | 1                 | -                  | -            | -            | 1            | -          | 1            | -               | -                       | -                       | -                       |
| 23            | Pacific Ocean: Golden Gate Bridge to Point Sur |               | -                 | -                  | -            | -            | -            | -          | -            | -               | -                       | -                       | -                       |
| 24            | Pacific Ocean: Point Sur to San Diego          |               | -                 | -                  | -            | -            | -            | -          | -            | -               | -                       | -                       | -                       |
| 25            | Any reservoir or lake                          |               | 1                 | -                  | -            | -            | 2            | -          | 2            | -               | -                       | -                       | -                       |
| 26            | Klamath River                                  |               | -                 | -                  | -            | -            | -            | -          | -            | -               | -                       | -                       | -                       |
| <b>Totals</b> |  |               | <b>1,279*</b>     | <b>1</b>           | <b>1,637</b> | <b>1,292</b> | <b>332</b>   | <b>862</b> | <b>4,124</b> | <b>731</b>      |                         |                         |                         |

\* = 1 angler caught and released fish at 5 different locations, 9 anglers caught and released fish at 4 different locations, 34 anglers caught and released fish at 3 different locations, 144 anglers caught and released fish at 2 different locations, and 848 anglers caught and released fish at 1 location

**Discussion**

The 2010 Sturgeon Fishing Report Cards provided pertinent information for relatively little cost. We recommend continuing use of Sturgeon Fishing Report Cards.

Highlights of information from 2010 Cards include the following:

- (1) Both white and green sturgeon were reported to have been caught in locations 12 and 13 (San Joaquin River). This is (basically) the first time anglers reported catching both species in these two reaches of the San Joaquin River
- (2) The fraction of unidentified sturgeon (1.3%) was the highest since the Cards were first issued (2007)
- (3) Recapture data (25 disk-tagged fish caught and reported) will be used to augment our mark-recapture data, and thus is important for the precision and perhaps accuracy of estimates of abundance, harvest rate and survival rate.
- (4) More than half the anglers who fished for sturgeon were not successful and successful anglers retained on average less than half the annual bag limit of three white sturgeon.
- (5) Just three strong white sturgeon age-classes appeared susceptible to sport fishing gear.

**Acknowledgements**

This effort was funded by the Bay-Delta Sport Fishing Enhancement Stamp, the Sport Fish Restoration Act, and the Interagency Ecological Program. Special thanks to Virginia Haakinson for sorting many returned Cards. Very special thanks to all anglers who returned Cards and provided valuable information on Card format/function.

Appendix 1. 2010 California Sturgeon Fishing Report Card (front and back, color = salmon)

FG 683 (Rev. 9/09)

**2010 CALIFORNIA  
STURGEON FISHING REPORT CARD  
NO FEE**  
(Card invalid after December 31, 2010)

NAME \_\_\_\_\_ DATE ISSUED \_\_\_\_\_

STREET ADDRESS \_\_\_\_\_

CITY \_\_\_\_\_ STATE \_\_\_\_\_ ZIP \_\_\_\_\_

HOME PHONE NUMBER \_\_\_\_\_ E-MAIL ADDRESS \_\_\_\_\_  
( ) \_\_\_\_\_

DATE OF BIRTH \_\_\_\_\_ DRIVER'S LICENSE/DMV ID NUMBER \_\_\_\_\_

CA FISHING LICENSE NUMBER \_\_\_\_\_ CARD NUMBER **005476-02**

**STURGEON RETAINED (Only white sturgeon 46-66 inches total length may be retained.)**

| MONTH | DAY | LOCATION CODE | LENGTH | REWARD DISK # (if present) |
|-------|-----|---------------|--------|----------------------------|
|       |     |               |        |                            |
|       |     |               |        |                            |
|       |     |               |        |                            |
|       |     |               |        |                            |
|       |     |               |        |                            |

**STURGEON RELEASED - NO REWARD DISK PRESENT**

| MONTH | DAY | LOCATION CODE | WHITE | GREEN | MONTH | DAY | LOCATION CODE | WHITE | GREEN |
|-------|-----|---------------|-------|-------|-------|-----|---------------|-------|-------|
|       |     |               |       |       |       |     |               |       |       |
|       |     |               |       |       |       |     |               |       |       |
|       |     |               |       |       |       |     |               |       |       |
|       |     |               |       |       |       |     |               |       |       |
|       |     |               |       |       |       |     |               |       |       |
|       |     |               |       |       |       |     |               |       |       |

**STURGEON RELEASED - REWARD DISK PRESENT**

| MONTH | DAY | LOCATION CODE | REWARD DISK NUMBER | MONTH | DAY | LOCATION CODE | REWARD DISK NUMBER |
|-------|-----|---------------|--------------------|-------|-----|---------------|--------------------|
|       |     |               |                    |       |     |               |                    |
|       |     |               |                    |       |     |               |                    |
|       |     |               |                    |       |     |               |                    |
|       |     |               |                    |       |     |               |                    |

CHECK HERE IF YOU DID NOT FISH FOR STURGEON  
READ INSTRUCTIONS ON BACK BEFORE REMOVING TAGS

**2010 STURGEON TAG 005476-02 3**

| MONTH | DAY | LOCATION CODE | LENGTH |
|-------|-----|---------------|--------|
|       |     |               |        |

**2010 STURGEON TAG 005476-02 2**

| MONTH | DAY | LOCATION CODE | LENGTH |
|-------|-----|---------------|--------|
|       |     |               |        |

**2010 STURGEON TAG 005476-02 1**

| MONTH | DAY | LOCATION CODE | LENGTH |
|-------|-----|---------------|--------|
|       |     |               |        |

**INSTRUCTIONS FOR STURGEON ANGLERS**

Title 14, Sections 1.74, 5.79 and 27.92, of the California Code of Regulations require that this card be in your possession while fishing for sturgeon in California waters and that you record your catch and tag each sturgeon taken in accordance with these instructions. Use a ball point pen with indelible ink to make a new entry for each sturgeon retained or released.

**If you retain a sturgeon**, immediately record the following information on the front of this card under the heading STURGEON RETAINED:

- Record the month, day, location, using the codes listed below, and the total length of the sturgeon (inches).
- Use tags in sequential order. Do not remove sturgeon tags from the report card until immediately prior to affixing to a sturgeon. Any tags detached from the report card and not affixed to a sturgeon shall be considered used and therefore invalid.
- Record the month, day, location, and the total length (inches) of the sturgeon retained on the tag located at the bottom of this card and attach the tag to the sturgeon. To affix the tag a "zip tie", string, line or other suitable material shall be passed through the tag at the location specified on the tag and attached to the fish.
- If the sturgeon has a DFG-affixed reward disk, write the reward disk number in the space provided.
- Once a sturgeon has been retained, you must stop fishing for sturgeon for the day. Once three sturgeon have been retained, you must stop fishing for sturgeon for the year.

**If you release a sturgeon with no reward disk present**, immediately record the information below on the front of this card under the heading STURGEON RELEASED-NO REWARD DISK PRESENT. **If a reward disk is present record the required information**, including the reward disk number, under the heading STURGEON RELEASED-REWARD DISK PRESENT.

- Record the month, day and location code from the list below.
- Indicate the species of sturgeon released by marking an "X" in the WHITE or GREEN column.
- If the sturgeon has a DFG-affixed reward disk, write the reward disk number in the space provided.

**Example:** While fishing the Sacramento River (Red Bluff to Hwy 32 bridge) on December 7th, you catch 2 white sturgeon: 1 of which you released the sturgeon you retained had a DFG-affixed reward disk. One sturgeon tag would be completed and attached to the white sturgeon you retained and this information would be recorded as follows:

**STURGEON RETAINED (Only white sturgeon may be retained)**

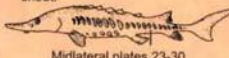
| MONTH | DAY | LOCATION CODE | LENGTH | REWARD DISK # (if present) |
|-------|-----|---------------|--------|----------------------------|
| 12    | 7   | 1C            | 52"    |                            |

**STURGEON RELEASED - REWARD DISK PRESENT**

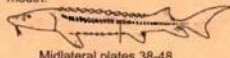
| MONTH | DAY | LOCATION CODE | REWARD DISK NUMBER | MONTH | DAY | LOCATION CODE | REWARD DISK NUMBER |
|-------|-----|---------------|--------------------|-------|-----|---------------|--------------------|
| 12    | 7   | 1             | HH1001             |       |     |               |                    |

|   |  |
|---|--|
| <p><b>CODE LOCATION</b></p> <p>1A. Sacramento River: Upstream of Red Bluff</p> <p>1B. Sacramento River: Red Bluff to Hwy 32 bridge</p> <p>1C. Sacramento River: Hwy 32 bridge to Colusa</p> <p>2. Sacramento River: Colusa to Knights landing</p> <p>3. Sacramento River: Knights Landing to Rio Vista</p> <p>4. Sacramento River: Rio Vista to Chippa Island</p> <p>5. Feather River</p> <p>6. American River</p> <p>7. Sacramento Deepwater Ship Channel</p> <p>8. Yolo Bypass</p> <p>9. Montezuma Slough</p> <p>10. Napa River</p> <p>11. Petaluma River</p> | <p><b>CODE LOCATION</b></p> <p>12. San Joaquin River: Upstream of HWY 140 bridge</p> <p>13. San Joaquin River: HWY 140 bridge to Stockton</p> <p>14. San Joaquin River: Stockton to Sherman Lake</p> <p>15. Old River</p> <p>16. San Pablo Bay</p> <p>17. Carquinez Strait</p> <p>18. Suisun Bay</p> <p>19. Grizzly Bay</p> <p>20. San Francisco Bay: North of HWY 80</p> <p>21. San Francisco Bay: South of HWY 80</p> <p>22. Pacific Ocean: North of Golden Gate Bridge</p> <p>23. Pacific Ocean: Golden Gate Bridge to Point Sur</p> <p>24. Pacific Ocean: Point Sur to San Diego</p> <p>25. Any reservoir or lake</p> <p>26. Klamath River</p> |
|---|--|

**Green Sturgeon** have barbels closer to mouth than to tip of snout.



**White Sturgeon** have barbels closer to tip of snout than to mouth.



Medialateral plates 23-30                      Medialateral plates 38-48

Title 14, Section 1.74 of the California Code of Regulations, requires you to return this report card by January 31, 2011. Mail your card to:  
California Department of Fish and Game, Fisheries Branch  
Sturgeon Fishing Report Card  
P. O. Box 944209  
Sacramento, CA 94244-2090

**ONLY ONE STURGEON FISHING REPORT CARD MAY BE ISSUED PER LICENSE YEAR.**  
**CARD CAN NOT BE TRANSFERRED TO ANOTHER PERSON**